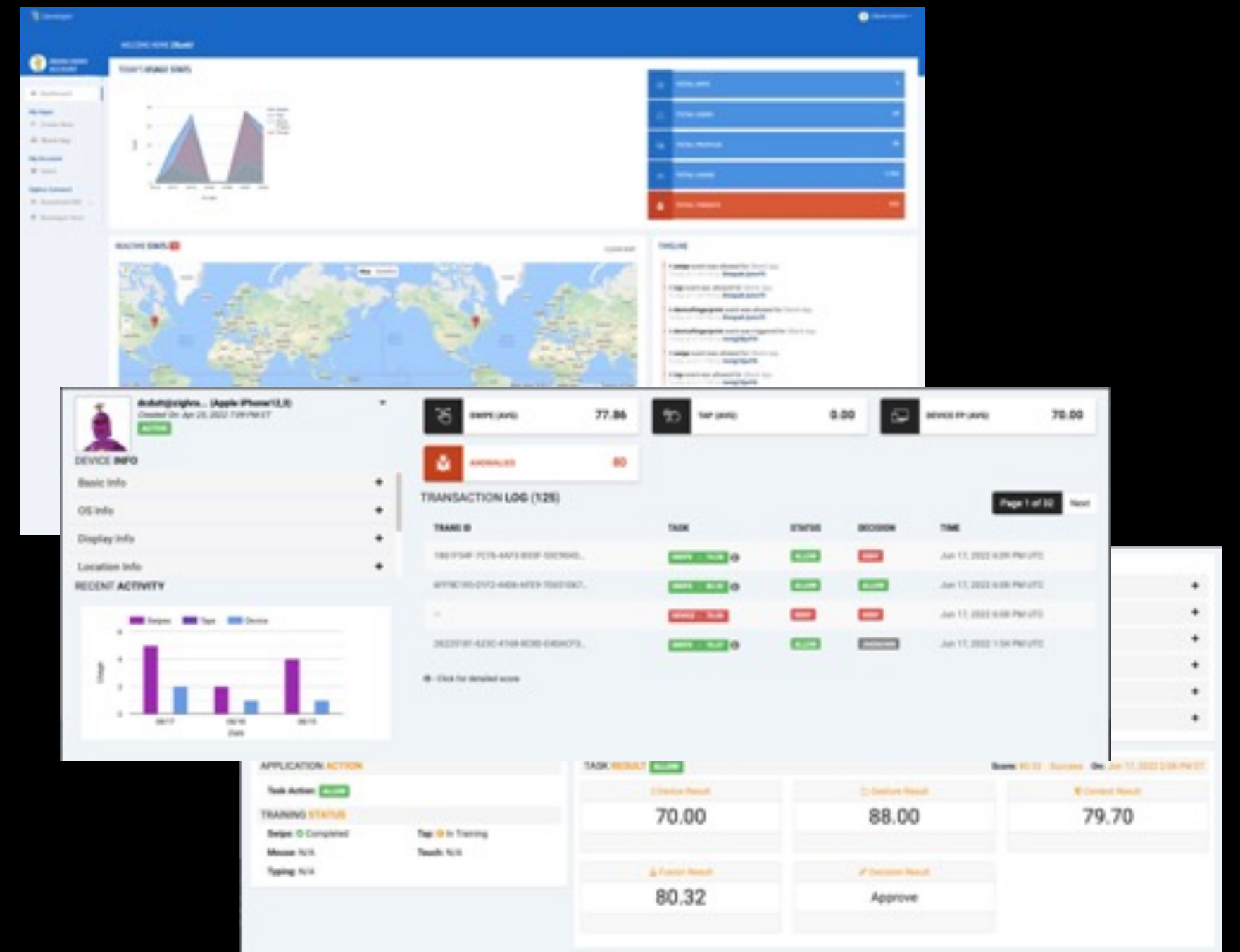


DeepSense - Explainable AI at the Tactical Edge

The Government & Defense sector faces persistent cyber threats from fraud groups working in association with nation states. From stealing intellectual property, to collecting intelligence that risks undermining nations' IT systems and capabilities. To minimize the cyberthreat it is essential that Defense organizations adopt the strongest form of continuous AI powered situational awareness and behavioural intelligence solutions for securing data, devices, and users including warfighters, employees, partners, and contractors. However, the effectiveness of traditional AI systems is limited by the machine's current inability to explain their decisions and actions to human users. Explainable AI/machine learning will be essential if future business decision makers and warfighters to understand, appropriately trust, and effectively manage an emerging generation of AI capabilities.



DeepSense Platform Pricing

	COMPUTE/TRANSACTIONS	DATA SCIENCE SUPPORT	COST PER TIER
TIER 1	up to 5,000,000	up to 100 Hours	\$900,000
TIER 2	5,000,001 - 10,000,000	up to 200 Hours	\$1,500,000
TIER 3	10,000,001 - 25,000,000	up to 300 Hours	\$2,500,000
TIER 4	25,000,001 - 50,000,000	up to 400 Hours	\$3,500,000
CUSTOM TIER**	Over 50M Transactions	Custom	Custom

**Contact us for Custom Pricing.