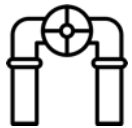


Track'em Capability Statement

We **track** everything you need to get the job done across the construction, operation and maintenance lifecycle.



Materials
Tracking



Plant &
Equipment



Tools &
PPE Tracking



Supply Chain
Track and Trace



Activity Based
Time Tracking

ABOUT US

THE PROBLEM WE ARE TRYING TO SOLVE

OUR SOLUTION

OUR PRODUCTS

OUR CLIENTS

OUR ENGAGEMENT MODEL

SUMMARY

**Established in
2014**

**Cloud based
platform to
track items**

**Offices in
Australia and
USA**

**Built for
owner
operators,
EPCMs and
contractors**

**Tracked more
than 10
million items**

The problem

Silos of information and breakdowns in processes throughout the construction and maintenance lifecycle.

ABOUT US

THE PROBLEM WE ARE TRYING TO SOLVE

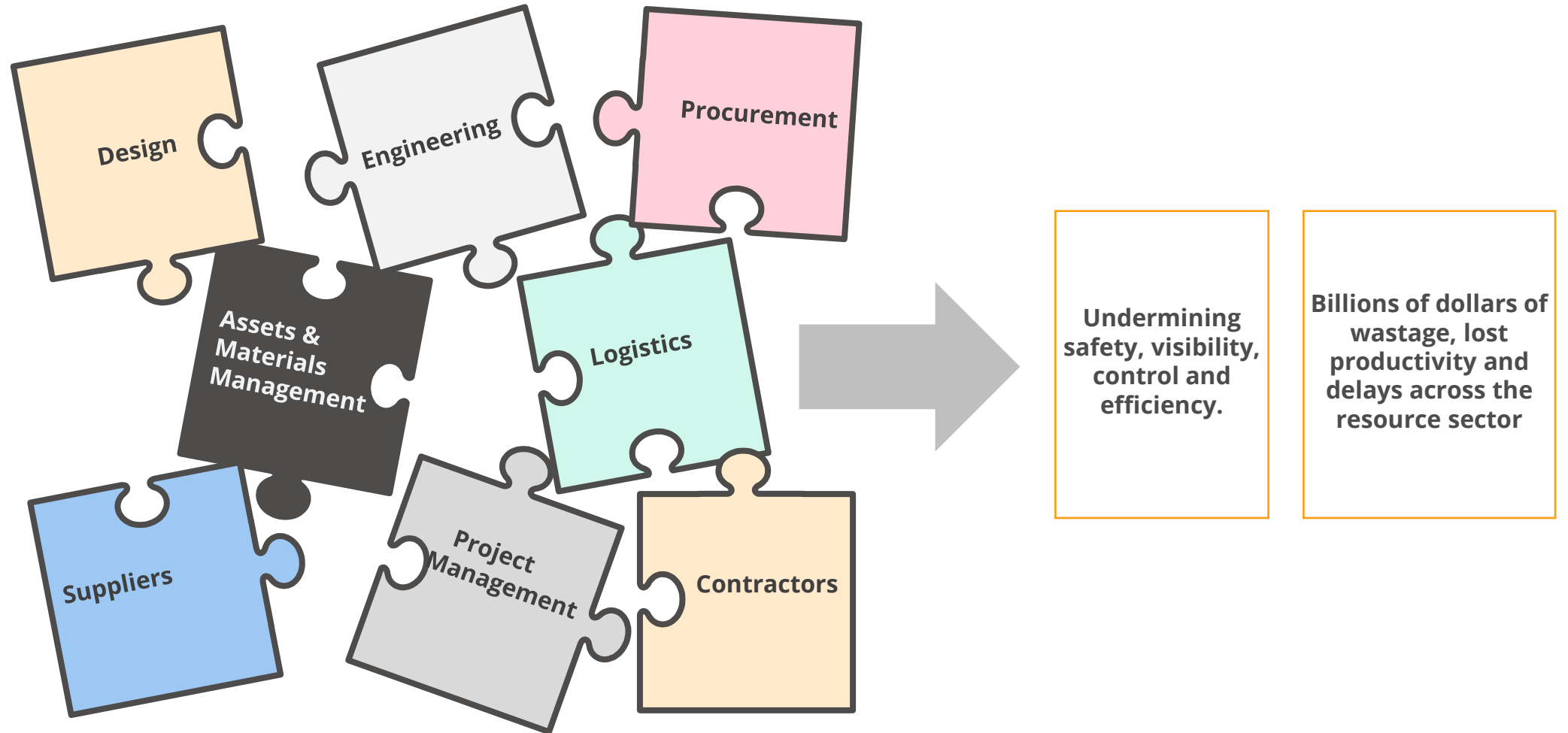
OUR SOLUTION

OUR PRODUCTS

OUR CLIENTS

OUR ENGAGEMENT MODEL

SUMMARY



Our solution

ABOUT US

THE PROBLEM WE ARE TRYING TO SOLVE

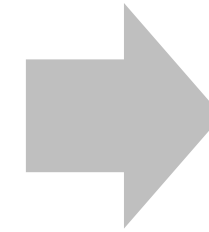
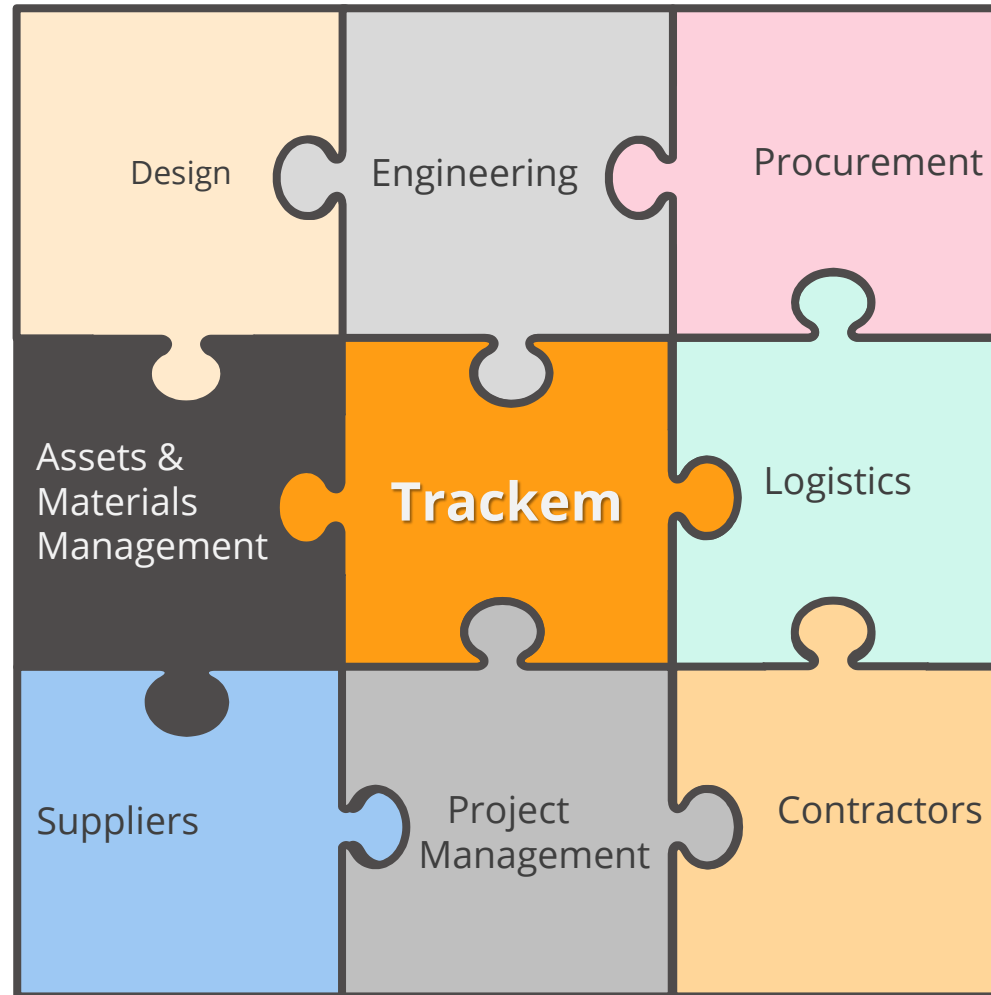
OUR SOLUTION

OUR PRODUCTS

OUR CLIENTS

OUR ENGAGEMENT MODEL

SUMMARY



Connecting stakeholders with a single source of truth for tracking and assets, materials and time. This gives you **visibility** and **control** to make better decisions, faster.

End to end solution

One stop shop for your tracking needs.

ABOUT US

THE PROBLEM WE ARE TRYING TO SOLVE

OUR SOLUTION

OUR PRODUCTS

OUR CLIENTS

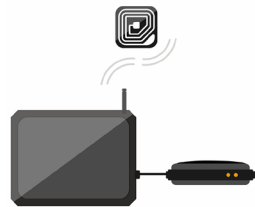
OUR ENGAGEMENT MODEL

SUMMARY

Tags
Barcode, RFID & GPS Trackers



Readers & Scanners



Software
Out Of The Box (OOTB)



Subject Matter Experts (SMEs)



ERP Integration



Track'em – High level architecture

ABOUT US

THE PROBLEM WE ARE TRYING TO SOLVE

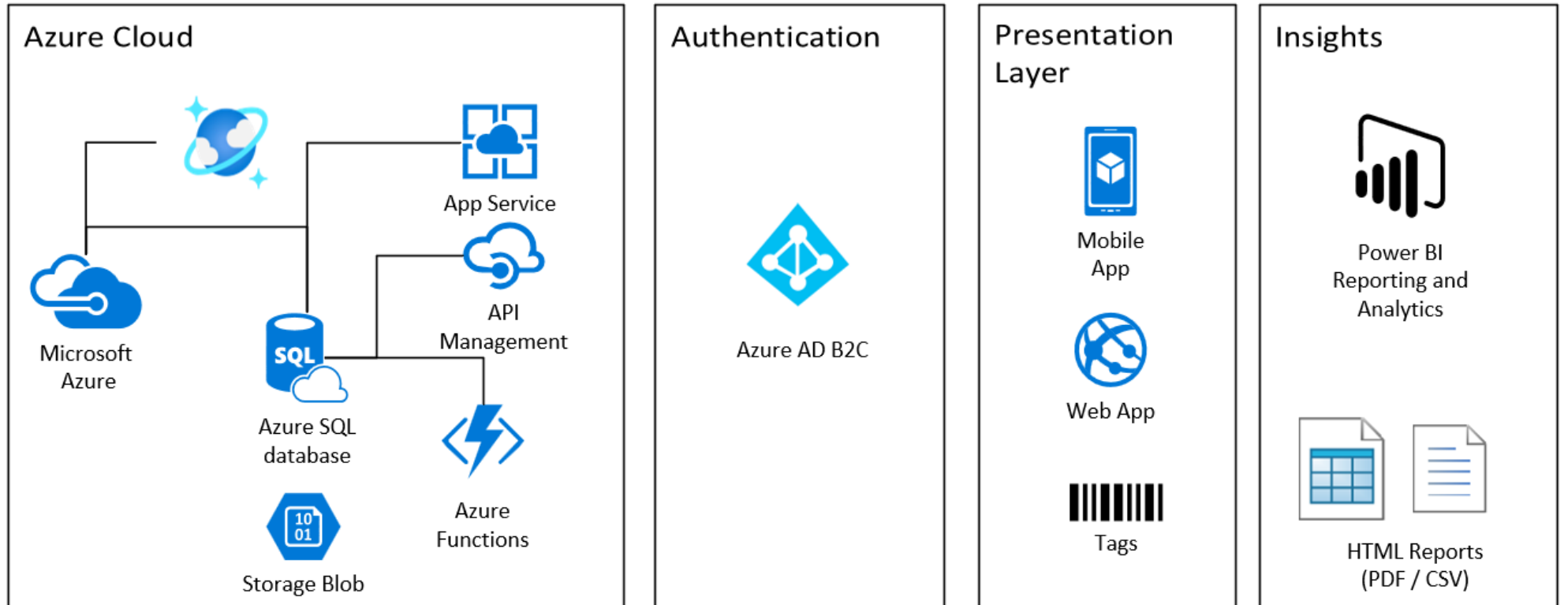
OUR SOLUTION

OUR PRODUCTS

OUR CLIENTS

OUR ENGAGEMENT MODEL

SUMMARY



Our Four SaaS Products

ABOUT US

THE PROBLEM WE ARE TRYING TO SOLVE

OUR SOLUTION

OUR PRODUCTS

OUR CLIENTS

OUR ENGAGEMENT MODEL

SUMMARY



MATERIALS

Ideal Use cases

- Materials tracking for construction project
- Onsite materials Tracking
- Fabrication / Expediting Process tracking
- Visibility of what is delivered vs installed
- BIM integration and digital twin



ASSETS

Ideal Use cases

- Live GPS tracking of mobile assets (e.g. mobile lighting towers)
- Live asset register
- Measure and optimise asset utilisation
- Check in / check out items for onsite stores
- Min / Max Levels of stocks



TIME

Ideal Use cases

- Remove wet signature for approvals
- Contractor productivity tracking
- Capture daily hours from the field
- Who is onsite, Person on Board (POB)



SUPPLY CHAIN Track N Trace (TNT)

Ideal Use cases

- Supply Chain Visibility
- Track items through Start, middle and final mile
- Connect suppliers, 3PLs with your internal warehouse and logistics team

PRE-EXECUTION

>

EXECUTION

>

CLOSE OUT

Solution on a page

Materials Tracking

All actions and transactions done through Track'em are logged. This trail is searchable enabling you to reference any actions taken by team members, contractors, etc.



ABOUT US

THE PROBLEM WE ARE TRYING TO SOLVE

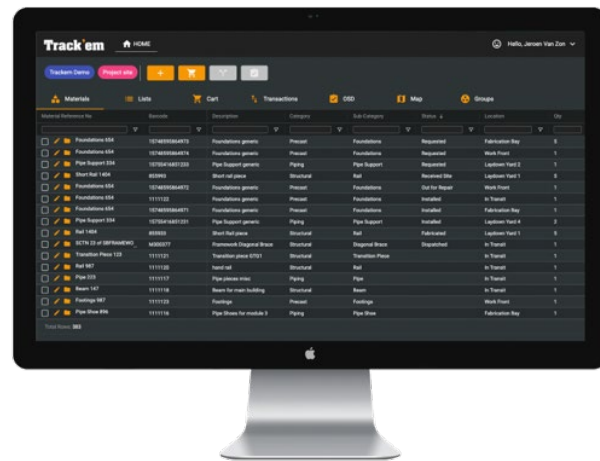
OUR SOLUTION

OUR PRODUCTS

OUR CLIENTS

OUR ENGAGEMENT MODEL

SUMMARY



Web App

Forecast
Location
Logistics/Expediting
BIM/3D
Preservation
QA/QC
OSD



Android

Solution on a page

BIM (Digital Twin)

ABOUT US

THE PROBLEM WE ARE TRYING TO SOLVE

OUR SOLUTION

OUR PRODUCTS

OUR CLIENTS

OUR ENGAGEMENT MODEL

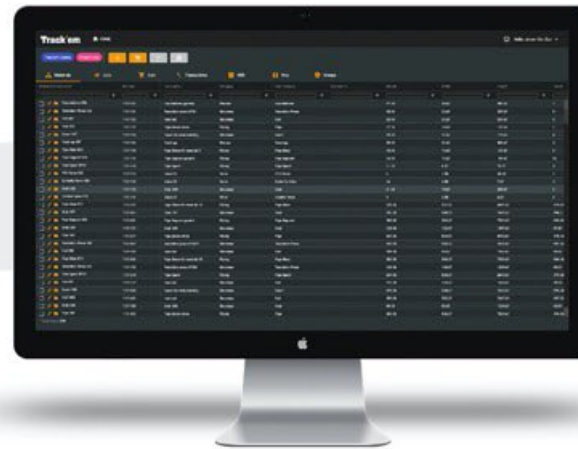
SUMMARY

SCAN AND UPDATE

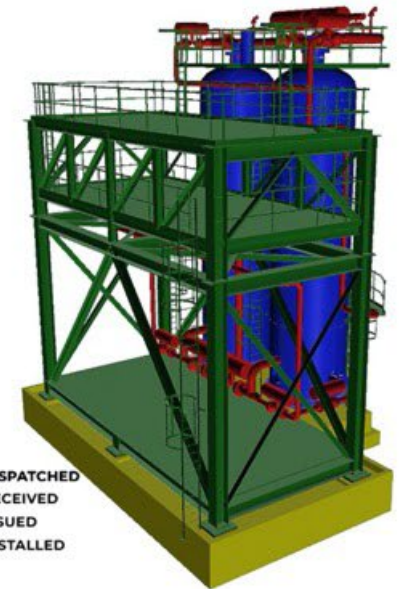


- Dispatched
- Received
- Issued
- Installed

CONSOLIDATE



VISUALISE



ABOUT US

THE PROBLEM WE ARE TRYING TO SOLVE

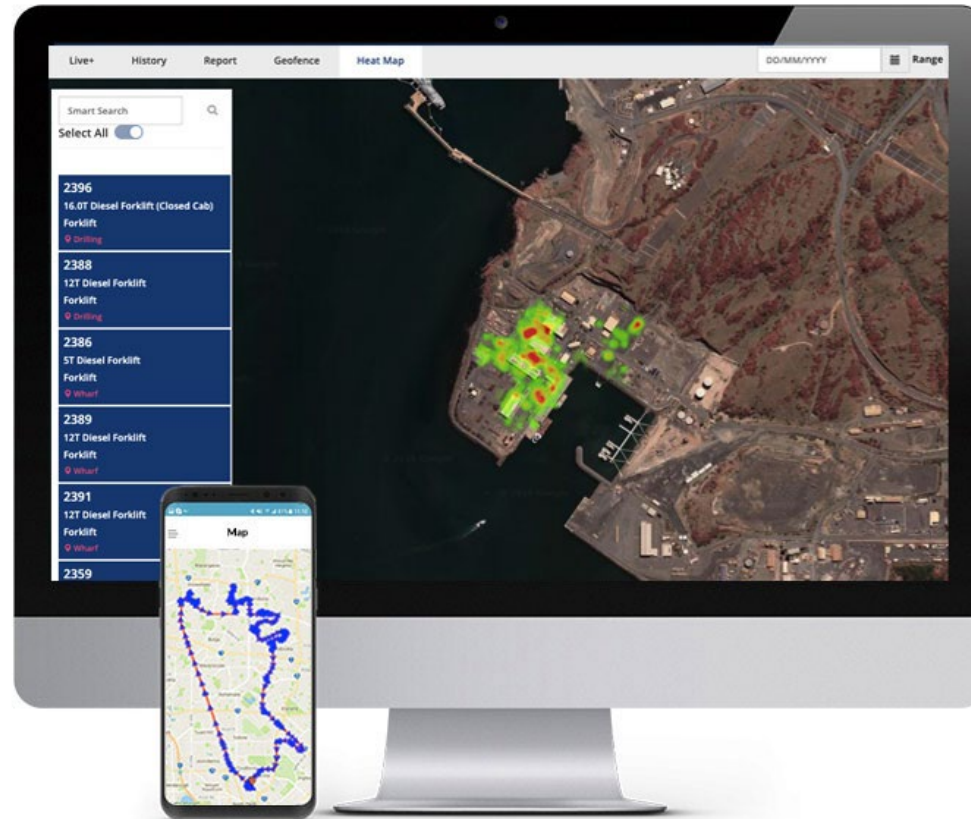
OUR SOLUTION

OUR PRODUCTS

OUR CLIENTS

OUR ENGAGEMENT MODEL

SUMMARY



- Assets Utilisation
- Live tracking
- Inspections and pre-starts
- IVMS
- Hardware agnostic

Solution on a page

Time Tracking

ABOUT US

THE PROBLEM WE ARE TRYING TO SOLVE

OUR SOLUTION

OUR PRODUCTS

OUR CLIENTS

OUR ENGAGEMENT MODEL

SUMMARY

The screenshot displays the Track'em web application interface. At the top, there is a navigation bar with options like HOME, DASHBOARD, TIMESHEET APPROVAL, REPORTS, and ROSTER. Below this, a header section shows the date (29/01/2021), supervisor (DEMO, Track'em), and project details (#58040, Chevron, Gorgon, TAR222 - PhaseX). A progress indicator shows five steps: 1. Choose People / Equipment, 2. Plan Activity (highlighted), 3. Allocate Hours, 4. Variations, and 5. Review. Below the progress indicator, there are buttons for CHOOSE, COPY PREVIOUS, and ADD ADDITIONAL SCOPE. The main content area features a table with columns for ID, Description, Estimated Quantity, Qty Complete to Date, and Current Comp %. The table lists various systems and their completion percentages.

ID	Description	Estimated Quantity	Qty Complete to Date	Current Comp %
<input checked="" type="checkbox"/> 637537.1	Waste Water System	524.43	419	80
<input type="checkbox"/> 637537.2	Steam Turbine darin system	260.74	183	70
<input type="checkbox"/> 637537.3	Start up Fuel System	348.01	278	80
<input type="checkbox"/> 637537.4	Service Air System	2083.37	938	45
<input type="checkbox"/> 637537.5	Chemical Dosing System	248.85	199	80
<input type="checkbox"/> 637537.6	Plant Drain System	517.43	376	72
<input type="checkbox"/> 637537.7	Sampling System	48.72	19	40
<input checked="" type="checkbox"/> 637537.8	Main Steam and Bypass System	2982.85	1790	60
<input type="checkbox"/> 637537.90	Feedwater System	75.71	8	10

- Fast time tracking for the project management team.
- Log time across multiple projects for each work order and activity level in one place.
- One simple interface for project managers and project engineers to enter time for all projects.
- Quickly enter timecard data from anywhere using browser
- Export timecard data for payroll and invoicing
- Powerful reporting options

Solution on a page

Powerful insights so that you can make better decisions faster

ABOUT US

THE PROBLEM WE ARE TRYING TO SOLVE

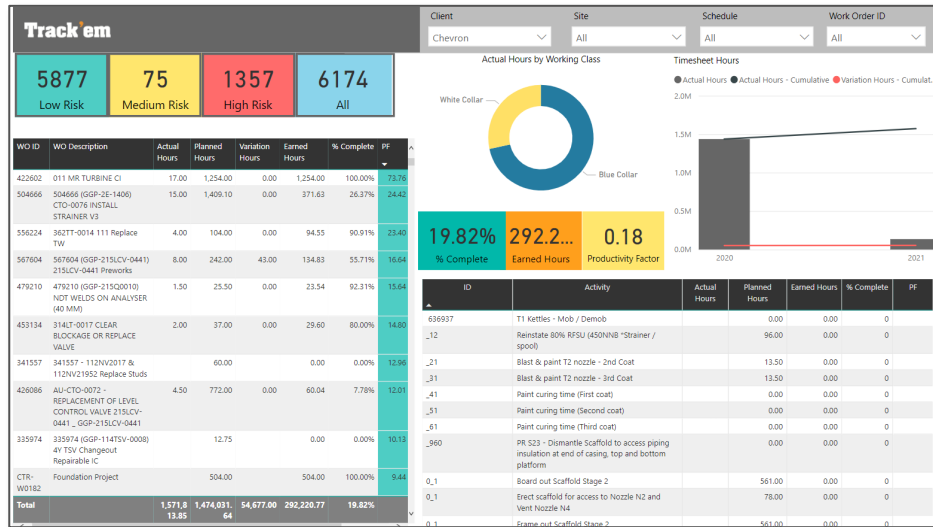
OUR SOLUTION

OUR PRODUCTS

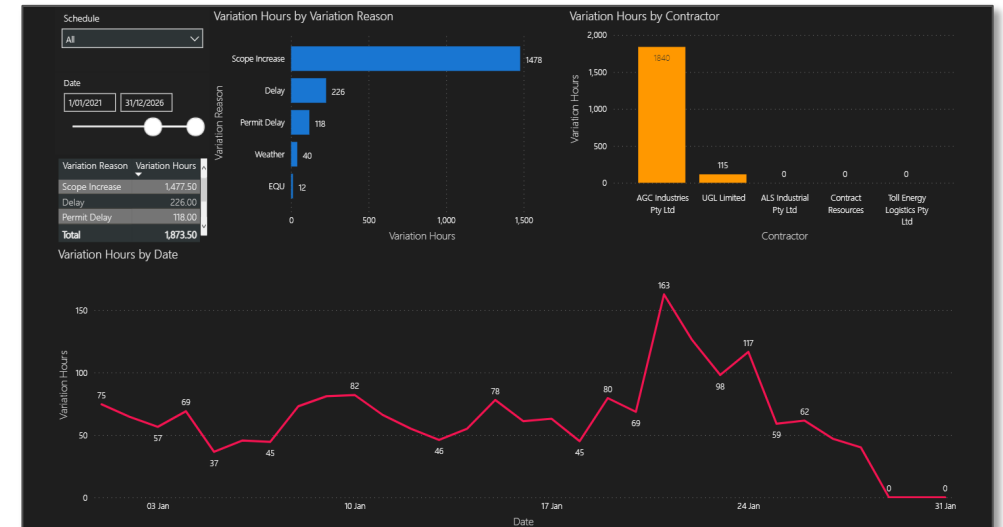
OUR CLIENTS

OUR ENGAGEMENT MODEL

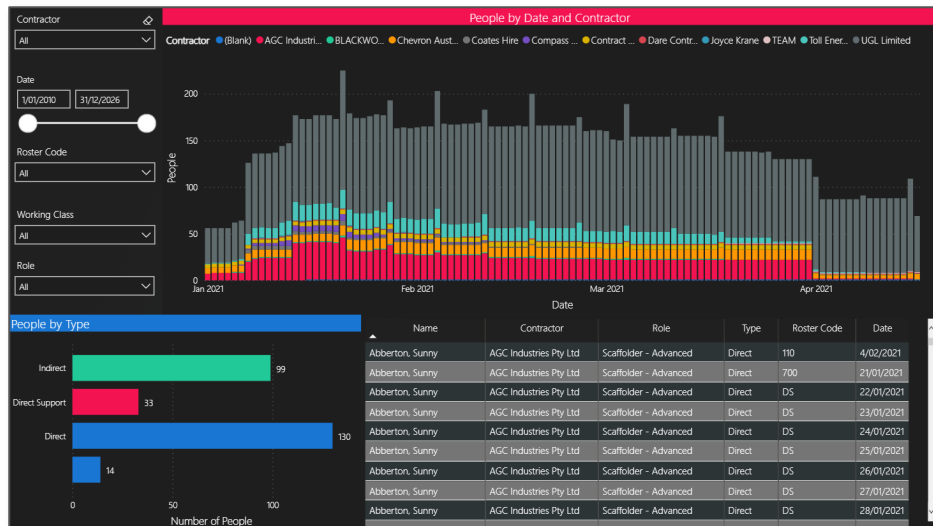
SUMMARY



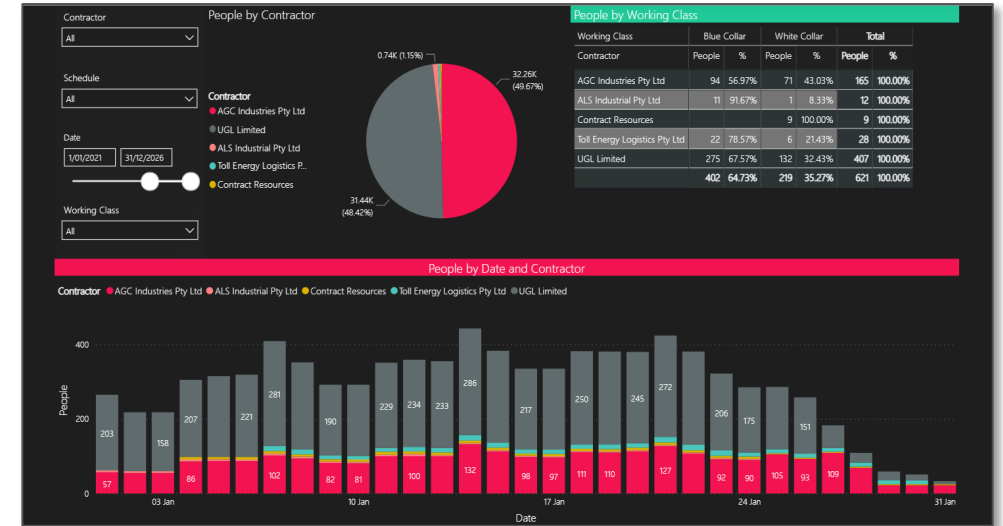
Daily progress and productivity



Variation reporting



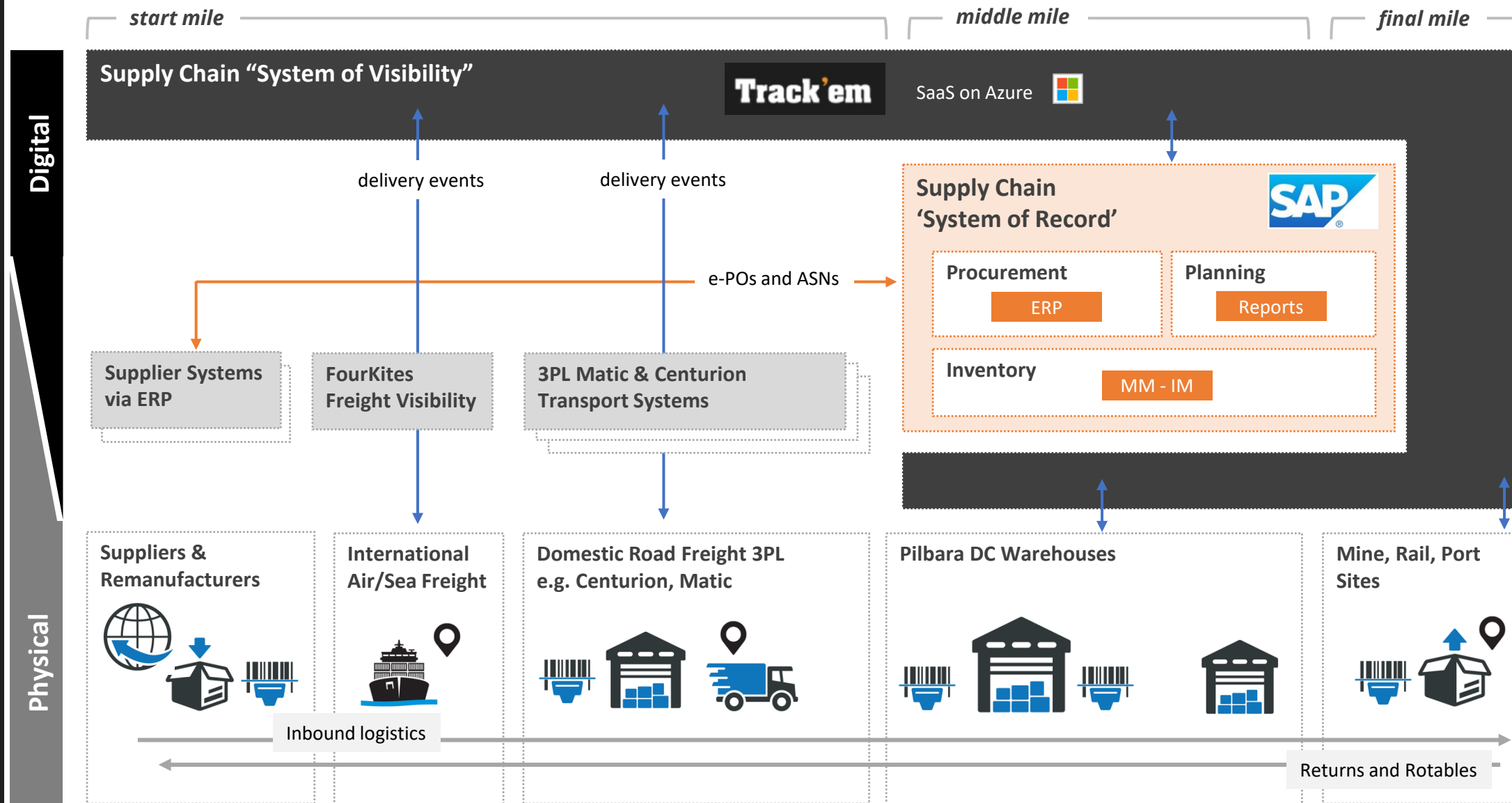
Roster Summaries



Timesheet Summaries

Solution on a page

Supply Chain Tracking (Track N Trace)



ABOUT US

THE PROBLEM WE ARE TRYING TO SOLVE

OUR SOLUTION

OUR PRODUCTS

OUR CLIENTS

OUR ENGAGEMENT MODEL

SUMMARY

Digital

Physical

Our clients

ABOUT US

THE PROBLEM WE ARE TRYING TO SOLVE

OUR SOLUTION

OUR PRODUCTS

OUR CLIENTS

OUR ENGAGEMENT MODEL

SUMMARY



Examples of our projects



Rio Tinto Iron Ore
Supply Chain: Track & Trace 300K+ items



BHP Olympic Dam
Shutdown: Tracked 1million+ items



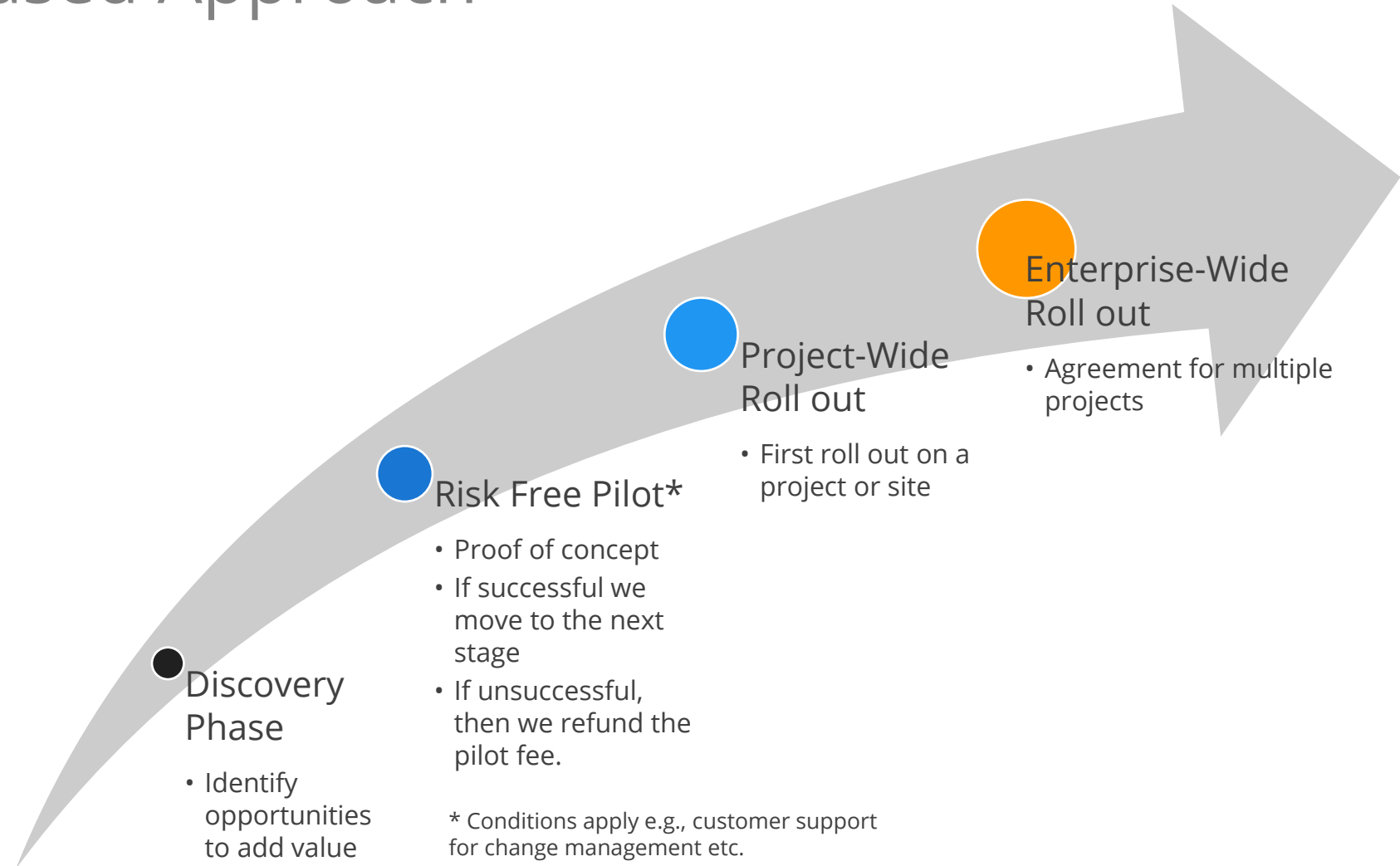
FMG Cloudbreak
Construction: Tracked 100K+ items



Chevron's Gorgon
Construction: Tracked 2million+ items

Engagement model

■ Phased Approach



ABOUT US

THE PROBLEM WE ARE TRYING TO SOLVE

OUR SOLUTION

OUR PRODUCTS

OUR CLIENTS

OUR ENGAGEMENT MODEL

SUMMARY

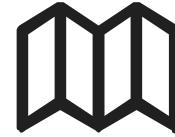
Competitive advantage

ABOUT US



Proven Technology

Proven with large players in mining, oil and gas



Patented

Technology is patented in USA and Australia



Continuous improvements

SaaS means you get continuous product enhancements

OUR SOLUTION

OUR PRODUCTS

OUR CLIENTS

OUR ENGAGEMENT MODEL

SUMMARY



Scalable

Technology can be implemented in hours not in weeks at low cost



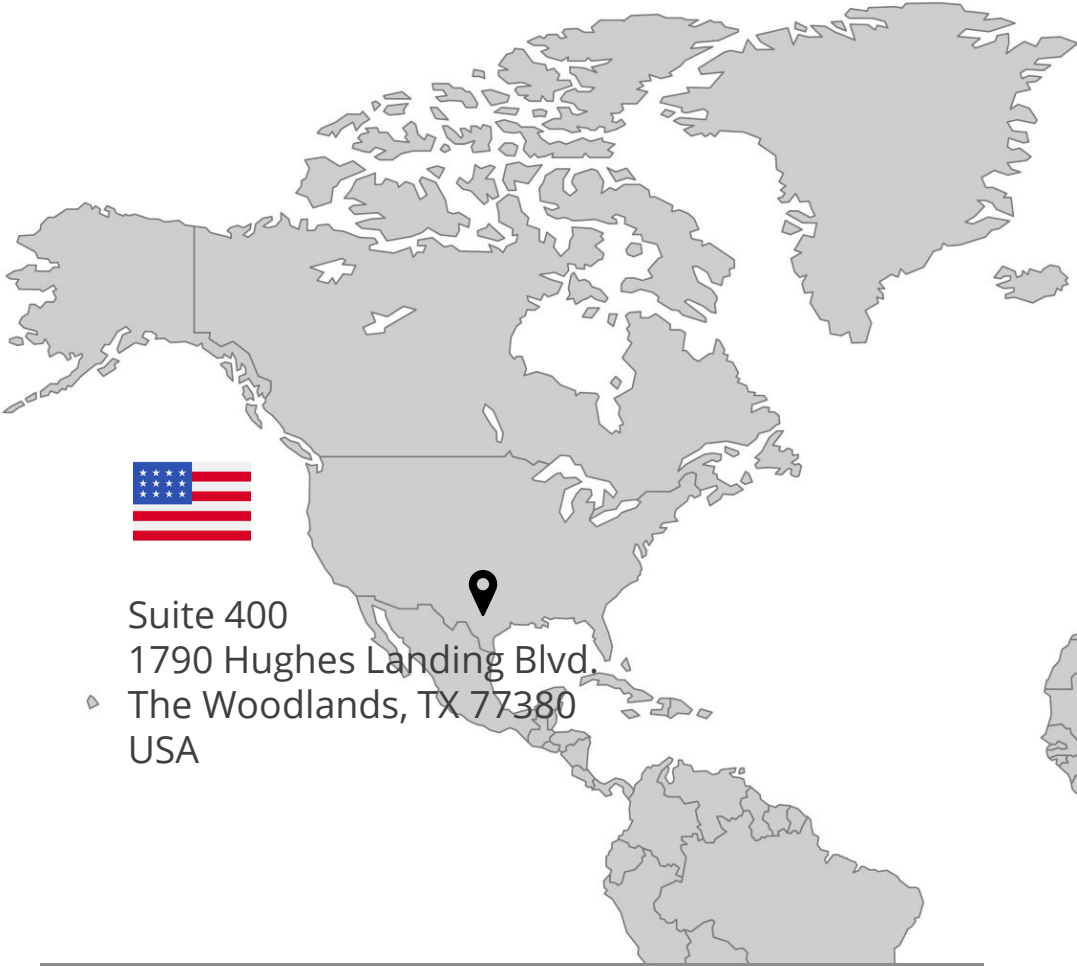
Hardware Agnostic

Bring your own device because our solution is compatible with most hardware devices in the market.



Industry expertise

Our team has extensive industry knowledge and experience.



Suite 400
1790 Hughes Landing Blvd.
The Woodlands, TX 77380
USA

For more information, please contact

Raquel Barreiro

General Manager (North America)

Phone: +1 346 497 5043

Email: raquel.barreiro@trackem.com.au

<https://trackem.com.au/>



For more information, please contact

Kashif Saleem

CEO

Phone: +61 448 522 662

Email: kashif@trackem.com.au

<https://trackem.com.au/>



Level 5
251 Adelaide Terrace
Perth WA 6000
Australia
Phone: 1300 897 610

