

# ENTERPRISE DOCUMENT HUB

# AGENDA



**Introduction**

**About  
Softura**

**Capabilities  
& Offerings**

**Scope &  
Deliverables**

**Case Studies**

**Next Steps**



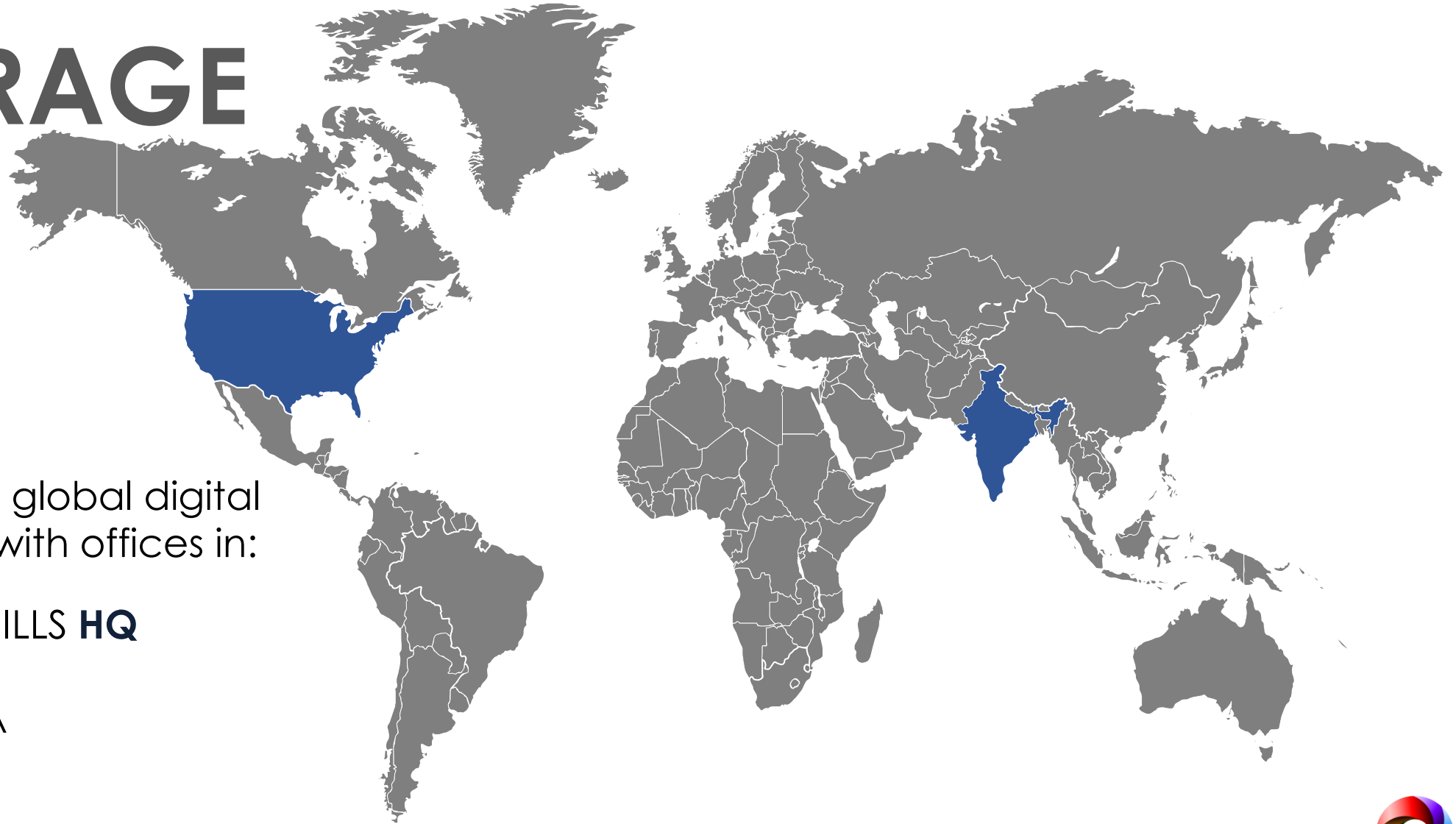


# MEET SOFTURA

Softura has been a leading IT consulting and custom application development service provider for over 20 years. Our proven record of consistently providing cutting edge technology solutions to solve complex problems and drive key business outcomes has to lead us to become a trusted business solutions partner for hundreds of mid-market & large enterprise clients.



# SOFTURA COVERAGE



Softura enables global digital transformation with offices in:

FARMINGTON HILLS **HQ**  
CHICAGO, IL  
CHENNAI, INDIA



# SPECIALTIES OVERVIEW

- IT Consulting and Custom Development for 20+ years
- Pioneered **Blended Delivery** Model
- Strong DNA with **M2M/IoT** solution development
- Very strong project based delivery track record



# OUR OFFERINGS

## IOT – INTERNET OF THINGS

- IoT Design & Architecture Consulting
- Machine/Device Integrations
- Beacon & RFID Technology
- Connected Platforms & Experiences
- AI/Machine Learning
- Remote Device Management

## CUSTOM APP DEVELOPMENT

- LOB Applications
- Intranets & Extranets
- Microsoft.NET Smart Applications
- Web / Mobile / Handheld / Cloud / Tablet
- API's/Web Services / SOA
- Legacy Modernization / Cloud Porting

## PORTALS & COLLABORATION

- SharePoint
- Planning & Development
- Rapid Deployable Solutions (RDS)
- Workflow Integration

## DATA ANALYTICS

- Data Science & Analytical Modeling
- Data Lake / Big Data
- Omni channel bots (Skype, Alexa etc.)
- Cognitive services (NLP, Computer Vision, AR)
- AI & Machine learning

## CLOUD ENABLEMENT

- Cloud Advisory Services
- Cloud Enablement – IaaS, PaaS & SaaS
- Cloud Migration
- Azure, AWS & Oracle Cloud

## MOBILE DEVELOPMENT

- iOS / Android Native Applications
- Xamarin based Cross Platform Applications
- Custom Applications (HTML5 & RWD)

## DIGITAL TRANSFORMATION

- Artificial Intelligence Systems
- UX / UI Experience
- Data & Document Management

## BI – BUSINESS INTELLIGENCE

- Power BI / Cognos / Qlik / Tableau
- Domain COE Platform Dashboards
- SSRS / SSIS / SSAS / T-SQL

## TECHNOLOGY CONSULTING

- Design Thinking Workshops
- Implementation Roadmap
- Architectural Assessment
- DevOps Consulting





WHO WE  
WORK  
WITH





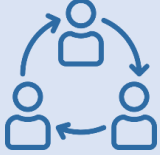
# WHAT IS ENTERPRISE DOCUMENT HUB?

Enterprise Document Hub is a cloud solution to effectively manage and access business documents. The solution provides the ability to add context to the documents and effectively use the context with retrieval process from the line of business applications. This solution is based on Office 365 SharePoint Online as the repository and a custom interface with intelligent cognitive search engine to access the documents based on the context. The solution is secured with Azure AD and document access controlled could be managed in a flexible way. The solution has the capability to extend for any future content management system, workflows etc.





# SOLUTION SNAPSHOT

DATA & INTERFACES	TAXONOMY	COLLABORATION
 <ul style="list-style-type: none"><li>• Customized User Interface</li><li>• Uses Office 365 SharePoint Online API &amp; Smart Search</li><li>• Integrated with Active Directory</li><li>• Supports Multi-Lingual documents</li><li>• Aspect Oriented Search</li><li>• 8-80 TB file size for Enterprise Document Hub</li><li>• ~100,000+ documents loaded</li></ul>	 <ul style="list-style-type: none"><li>• Taxonomy Generation based on an existing database</li><li>• Capability to automate Taxonomy Generation</li><li>• Access Control at a granular level and group level – integrated with Active Directory</li><li>• Advanced Elastic Search Capability based on Metadata</li><li>• Document Rating</li></ul>	 <ul style="list-style-type: none"><li>• Ability to follow/subscribe changes to the document</li><li>• Ability to Share/Download</li><li>• Ability to check-out and check-in – Offline Mode</li><li>• Ability to create customized workflows (Power Apps/Microsoft Flow)</li><li>• Ability to view usage and statistics in a Dashboard</li></ul>

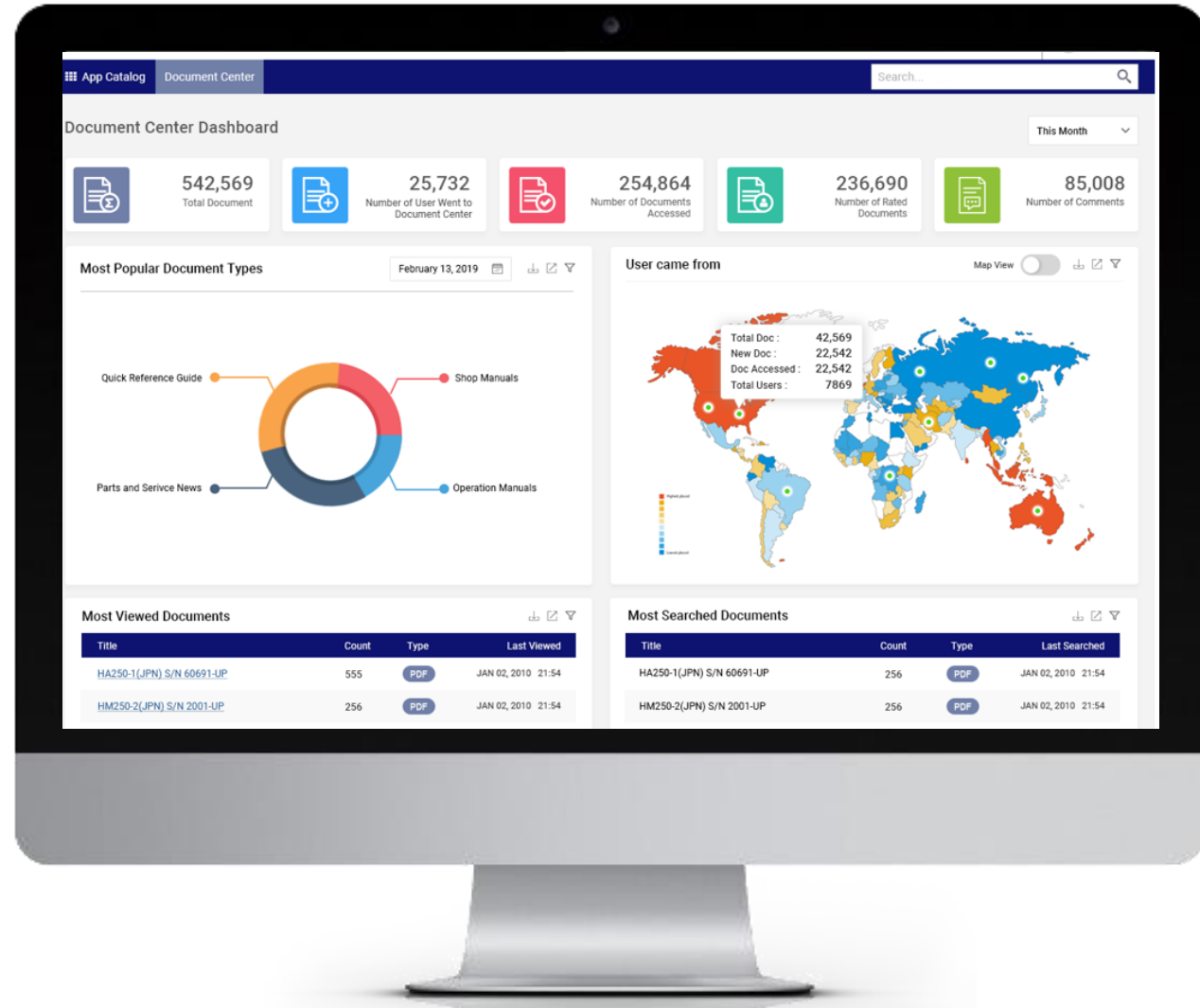


# NEEDS & FEATURES

- An unified interface and management of different document types – contracts, invoices, service agreements manuals etc.
- Ability to fetch the relevant document quickly and group/link the related documents.
- A collaboration platform with features like community/members and content management.
- Access Management of the documents in multiple sites often creates a lot of operational inefficiencies.
- Visibility on the usage of the centralized platform



# DASHBOARD VIEW



# SOFTURA ACCELERATOR

## OUT-OF-THE-BOX



- SharePoint Online API Connector
- Active Directory Integration
- Role/Claim – Administration
- Hierarchy Organization Structure
- Aspect Oriented Search
- Search Results Listing
- Ability to view the documents inside browser (PDF, Word, HTML, Excel)
- Document Collaboration – What's New, Subscribe, Download, Share etc.

## CONFIGURATION & CUSTOMIZATION



- Look and Feel - Stylesheet, Colors, Theme
- Taxonomy for target use case; Map Document Type & Meta Data
- Document Upload – Customization
- Customize Organization Structure & Map Claims
- Setting up and Integration with Workflow systems



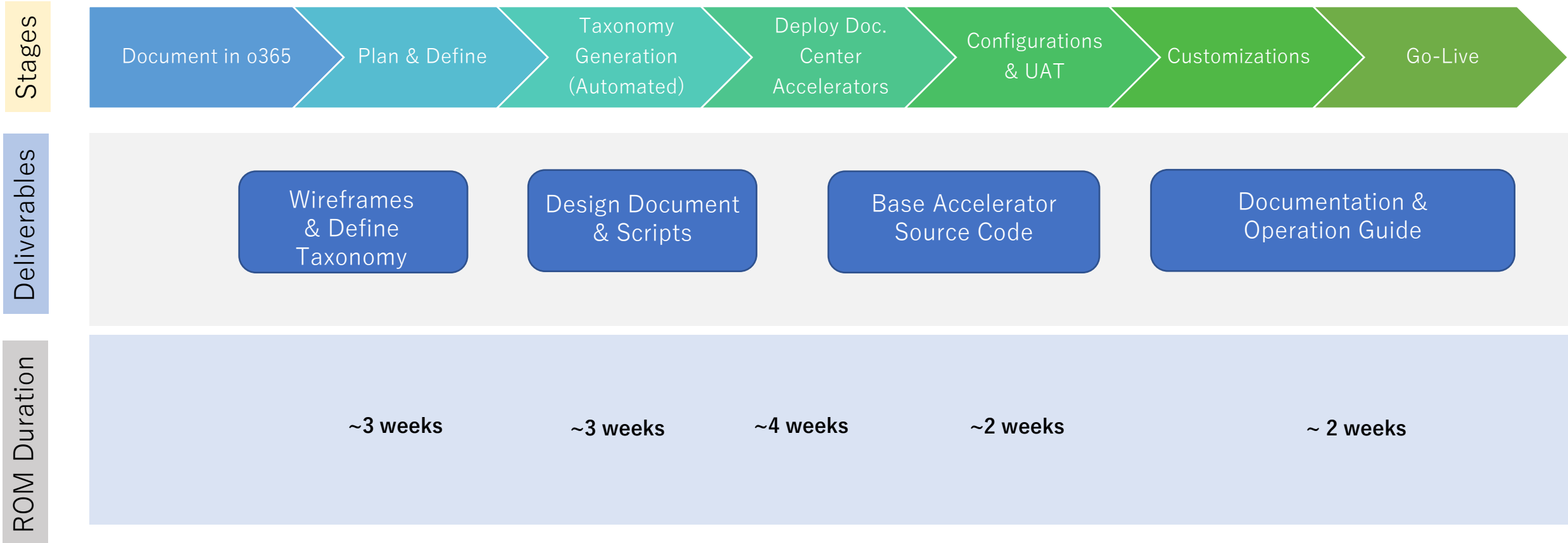
# SCOPE & DELIVERABLES

The scope for this engagement is to setup Enterprise Document Hub for Clients with the following set of activities involved:

- 1.) Work with the key stakeholders to identify the set of documents from Purchasing, Finance, IT and any other group as suggested.
- 2.) Prepare the inventory of the documents and work with the stakeholders to add/cleanup meta-data for improving the search relevancy. Wherever required, automation will be employed with cognitive search within the content to add the meta-data.
- 3.) Apply the meta-data to the documents identified and setup Enterprise Document Hub that will allow Search and Filter capability based on the entire meta-data.
- 4.) The solution will have Active Directory integration and the Administration interface will be available to create Roles and Permissions for document access by Document Type.
- 5.) Setup the capability to download the document and subscribe to any changes to a document and view the changed documents (What's New).
- 6.) Customize the look and feel style of Enterprise Document Hub Search and Search Results page to match Clients theme.
- 7.) Setup the Document Upload interface with the right permission and Meta-Data.
- 8.) Support 2 weeks of User Acceptance Testing and Bug Fixes.



# TIMELINE – 6 STAGES



The background is a complex technical drawing in white lines on a dark blue gradient. It features various mechanical components, including gears, shafts, and housing parts, shown in cross-section and perspective views. Some parts are labeled with letters like 'A' and 'B', and numbers like '20.5'. The drawing is semi-transparent, allowing the blue background to show through.

# CASE STUDIES



Tier 1 Automotive  
Manufacturer #1

## THE PROBLEM

Across various business segments and departments, numerous business documents are authored and managed. Some documents are managed locally, some via network shared drives and others through various tools such as Teams, SharePoint, PLM, ERP, etc. It is difficult to find documents in a timely manner but more importantly, to find relevant documents based on user functional role. Managing access control after a job or role change is difficult at best and impossible at worst, causing project delays and missed deadlines. A desired outcome is easy and efficient access to the relevant information, provides traceability among business processes and lifecycle, delivers better security and access control to the documents, promotes collaboration and capability to support future workflows.

## THE SOLUTION

Implement Enterprise Document Hub, a cloud solution to effectively manage and access business documents. This solution provides the ability to add context to the documents and effectively use that context during the retrieval process from the line of business application. Enterprise Document Hub is based on Office365 SharePoint Online as the repository with a custom interface and intelligent cognitive search engine to access the documents based on context. Secured with Azure AD, document access control is managed in a flexible way and has the capability to expand for any future content management system, workflows etc.





## THE PROBLEM

A leading Tier One automotive supplier entrusted to design, engineer, validate and manufacture products and technologies for automotive, commercial and industrial markets. Operating globally from 80 facilities in 17 countries, client wishes to implement an efficient document management system that will integrate with Parseable platform. Documents are of all different file (Excel, PDF, Word, PPT) and document types (Engineering drawing, checklist, FMEA etc.) Implementable solution must support retrieval, review, download and editing of document types based on meta-data. Must be mobile-friendly and responsive, and provide API demonstrating integration capability.

## THE SOLUTION

The solution will be 100% Azure PaaS and 365 SharePoint Online with responsive Web Application authentication interface supporting Integration to SharePoint Online, find and retrieve documents based on meta-data. Responsive mobile interface scans QR code and integrates with Backend API to show results. Solution components include Azure App Service Plan, Azure SQL, Redis Cache, Azure CDN, Azure Functions, Azure Cognitive Services. Azure environment setup, documents uploading, metadata set up, API and QR code publishing for mobile interface, user acceptance and testing completion.





## Heavy Duty Equipment Manufacturer

### **THE PROBLEM**

Across Sales, Marketing, Service, Parts, Finance and other Departments, various business documents are stored in silos making it difficult to manage and look up relevant content based on the Part Number or Model or other Meta-Data. Some of the Manuals are published specifically for a range of serial numbers and it takes several minutes of scanning through hundreds of documents to find the most relevant Service manual or Shop Manual. Further, looking up the right content within the Document is often a manual task. Also, certain document types such as Price Lists are very confidential and it is important to maintain the right access control and retention policies.

### **THE SOLUTION**

Enterprise Document Hub provided a single pane of glass view for several hundred thousands of business documents by integrating with Office 365 SharePoint Online and various other proprietary systems supporting more than 10 file types. Enterprise Document Hub provided role based access control that is fully configurable by the job type, business segment, region, document type and even other user preferences. The solution being fully mobile friendly is being used by Mobile workforce improving their efficiency tremendously. The search engine is powered by Cognitive services for intelligent and relevant search.



# THE SOFTURA PROMISE

Guided by these Softura principles, we will provide our clients with innovative, high-value solutions and give our best each and every day.



## **Human Values**

We will serve our clients with the utmost respect for human values.



## **Integrity**

What we commit to, we will deliver with honesty, fairness, reliability and uprightness.



## **Innovative Solutions**

We will consistently offer novel and superior solutions to satisfy the needs of our clients.



## **Value For Money**

We will deliver higher value through continuous improvement in quality, cost and speed.





QUESTIONS? CONTACT US  
TO LEARN MORE.

**Thank You**

Mohan Jayaraman  
sales@softura.com  
503-395-8946



**Softura**