

# BlueDot's infectious disease intelligence

Leading infectious disease intelligence that is backed by cutting-edge technology and global experts.

## Disease Event Alerts & Assessments

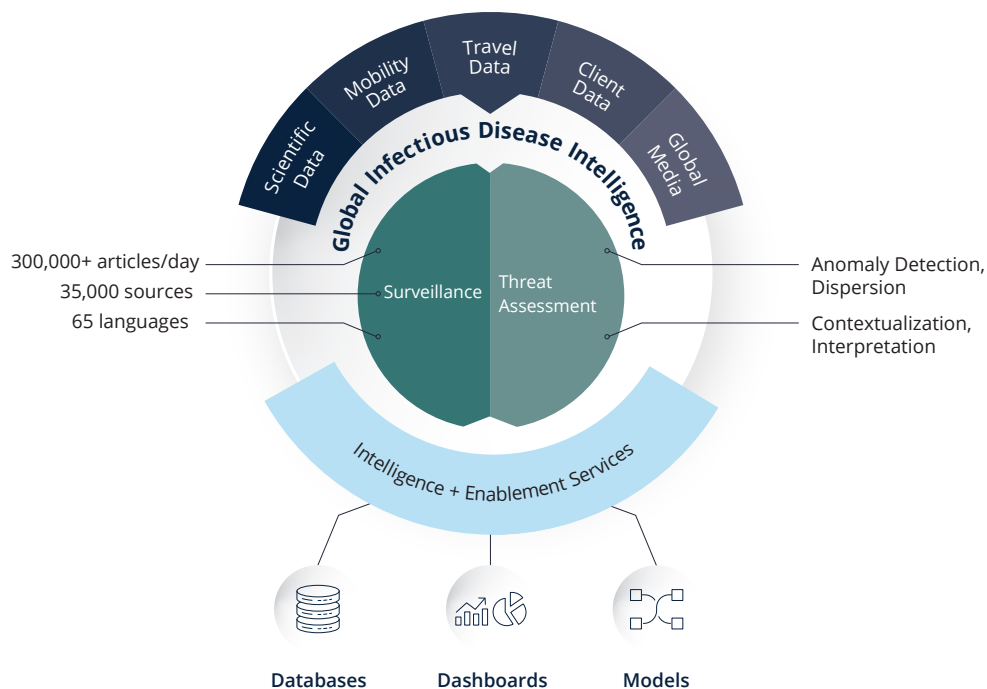
Confidently make educated, time-sensitive decisions with BlueDot's infectious disease alerts. Through a mix of event-based and indicator-based information sources, BlueDot has honed the art of identifying infectious disease outbreaks first – in fact, we were the among the first in the world to identify the emerging risk of COVID-19.

From first detection to endemicity, our in-house team of epidemiologists embed context and insight in our notifications, such as disease characteristics and risk level categorization.

## Intelligence Reports

Expand your knowledge to include the experience of our epidemiologists, clinicians, scientists and veterinarians with Intelligence Reports.

Intelligence Reports are timely thought leadership papers written by our in-house experts that unpack infectious disease trends, provide in-depth detail on emerging events, and share educated infectious disease forecasts.



## Our infectious disease intelligence includes



### Disease attributes & knowledge

Understand pathogen severity, transmissibility, preventability and more



### Human disease case & death counts

Pinpoint where infectious diseases have been reported – and haven't – across the globe



### Annual disease baselines (incidence)

Improve planning with the expected annual incidence of a disease in a specific location



### Importation risk

Determine the risk of a disease entering your area of interest



### Exportation risk

Determine the risk of a disease spreading from its current location



### Seasonal disease baselines (case counts)

Identify case volumes that are outside of seasonal averages for early outbreak detection



### Epidemic spotlight

In-depth analysis and reporting for ongoing global epidemics



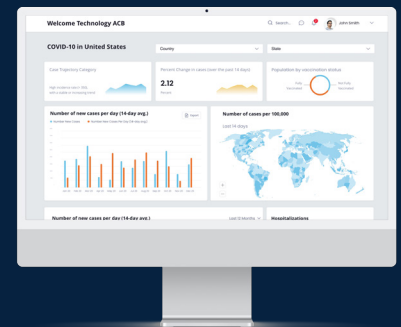
### Outbreak vulnerability index

Gauge local vulnerability to future epidemic outbreaks



### Population air travel

Understand how and where infected populations are moving



Our infectious disease intelligence provides the key insights that analysts, government officials, product managers and risk professionals need to make informed and impactful decisions.

Detailed global and local infectious disease activity

Disease importation and exportation likelihood in areas of interest

Active disease risk, severity, preventability and government preparedness

New, notable, and unusual infectious disease activity

# BlueDot's Packages

Alerts	Standard Intelligence	Enhanced Intelligence	Comprehensive Intelligence
Situational awareness of biothreats	Location-specific assessment of existing and emerging disease activity	Underlying drivers of risk and impact assessments to enable enhanced analysis	Forecasts, estimates, and interpolations to go beyond reported data
"Tell me what is happening"	"Tell me what the risk level is"	"Enable me to do my own analysis"	"Help me overcome data limitations"

## Why BlueDot?



Singular focus on disease threats



Proprietary analytics



Integrated private and public data sources



Enablement services



Subject matter expertise



Contextual insights



Global coverage across 65 languages

Talk to our experts to explore the best infectious disease intelligence solution to empower your organization.

info@bluedot.global | bluedot.global