

All in One Social Media Connector

Bespoke Solution by
Dotsquares Ltd.



Gold Cloud Platform
Gold Data Analytics
Gold Datacenter
Silver Cloud Productivity
Silver DevOps



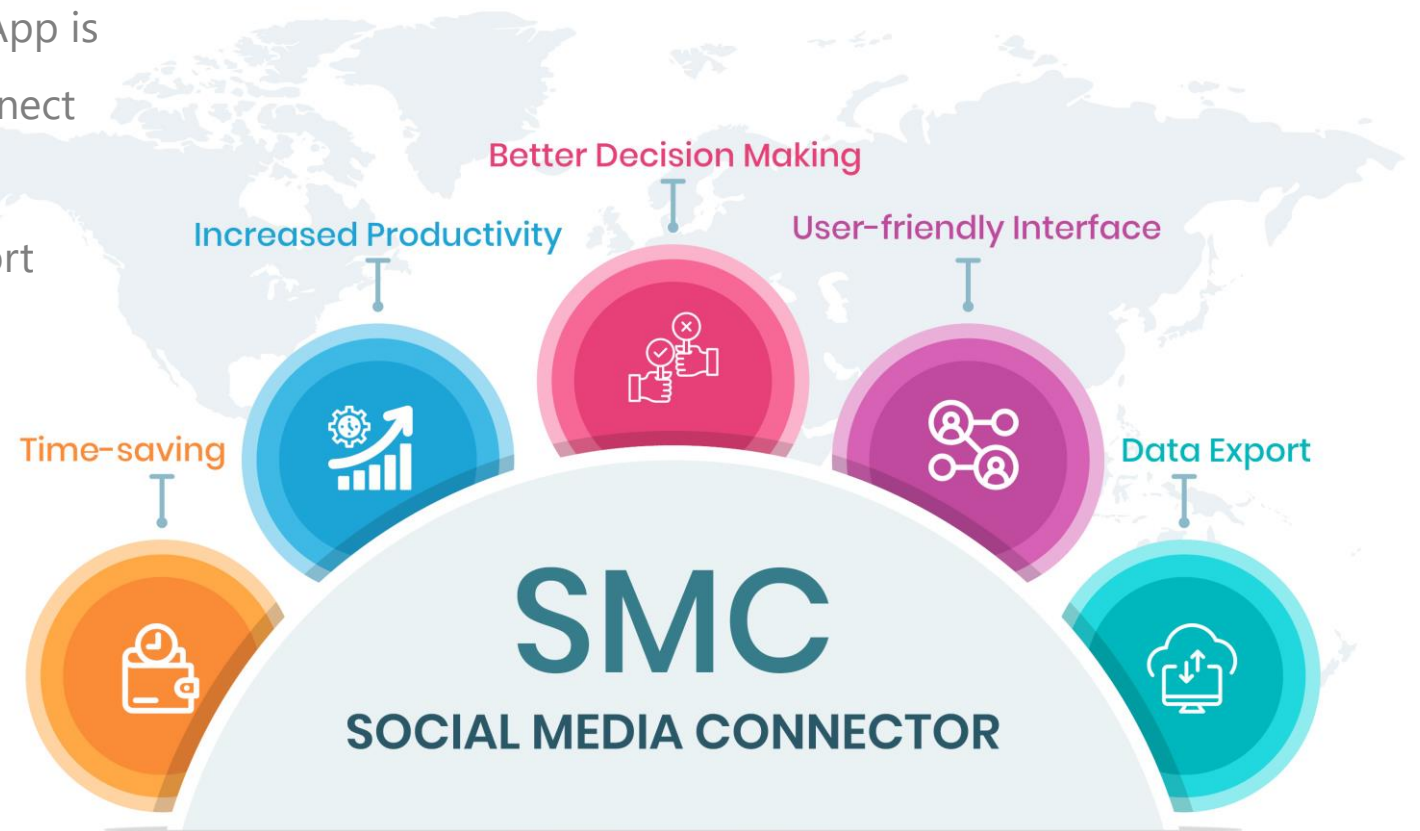
About us

- ❑ Full legal name of the company is Dotsquares Ltd.
- ❑ We are a 'Self Funded' company and have grown organically with no M & A activities
- ❑ We are process driven, CMMI3 organisation. Some of our strengths are –
 - Agile based development
 - In house Project Management
 - Flexible infrastructure- ability to provide disrupted deliveries of project even while working from home
 - Wide range of technology exposure like IOT, ML, AI and more...
 - Refined communications processes
 - Working with Gartner for several years



Social Media Connector

Dotsquares's All-in-One Social Media Connector App is a Microsoft-based solution that allows you to connect multiple LinkedIn and Google Analytics accounts simultaneously, view complete analytics, and export overall reports generated via Power BI.



Benefits

Time-saving: The app allows users to manage multiple LinkedIn and Google Analytics accounts simultaneously, saving time and effort by eliminating the need to log in and out of different accounts.

Increased Productivity: Users can access and view complete analytics from all connected accounts from a single platform, streamlining the social media management process and increasing productivity.

Better Decision Making: The app's comprehensive analytics dashboard provides users with all the necessary data to make informed decisions, improving the effectiveness of social media campaigns.

User-Friendly Interface: The app is user-friendly, making it easy for users to connect their accounts and access the desired information.

Data Export: The ability to export complete analytics data from all connected accounts to a single platform makes it easy for users to share information with team members or analyze data in greater detail.



Features

Features

Connecting Multiple linked In Accounts

Connecting Multiple Google Analytics

Bifurcating accounts connected with single email address

Customizable analytics Dashboard generated via Power BI

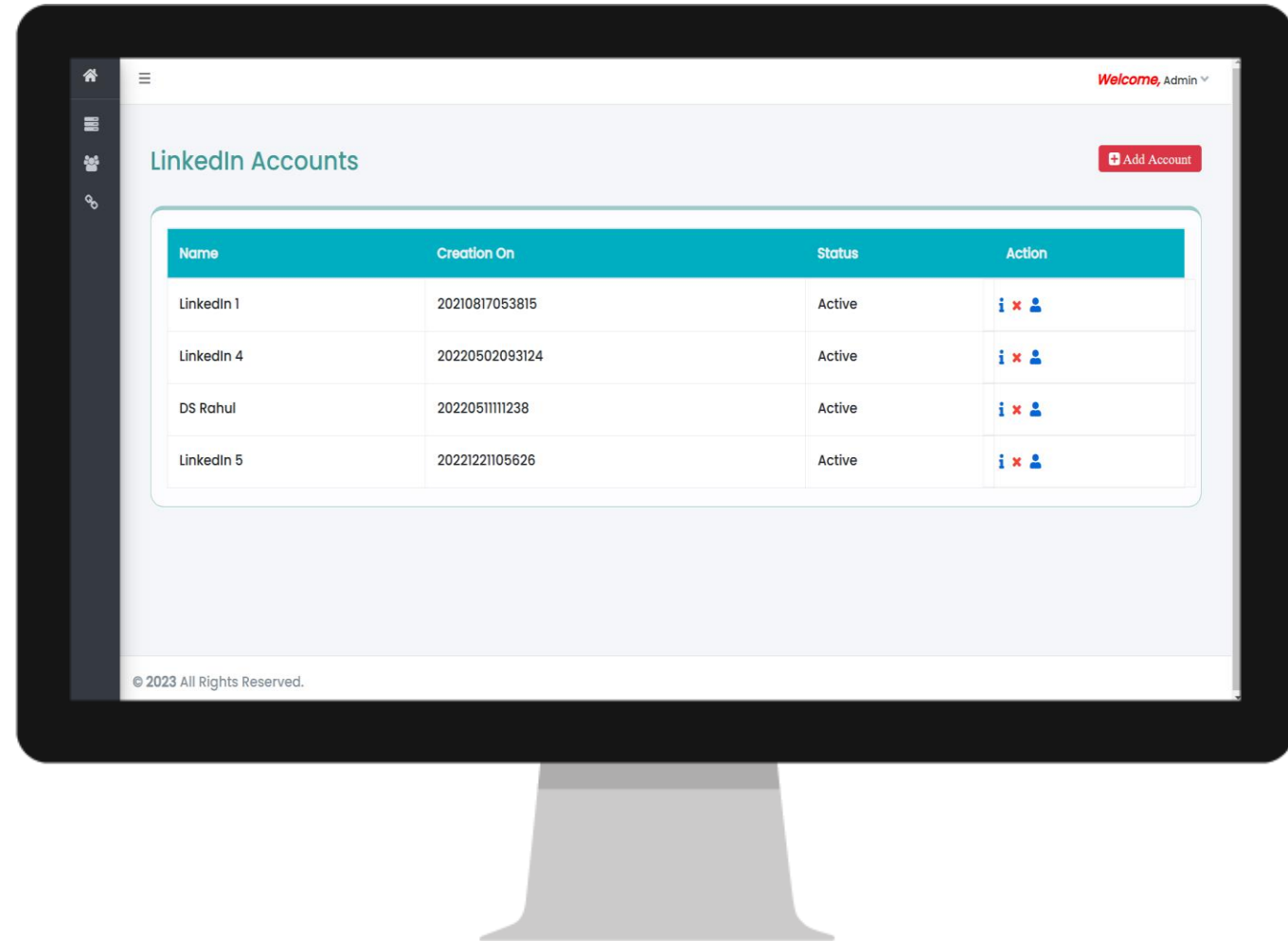
Export Analytics reports generated via Power BI

User Management

Features

Linked In Account Management

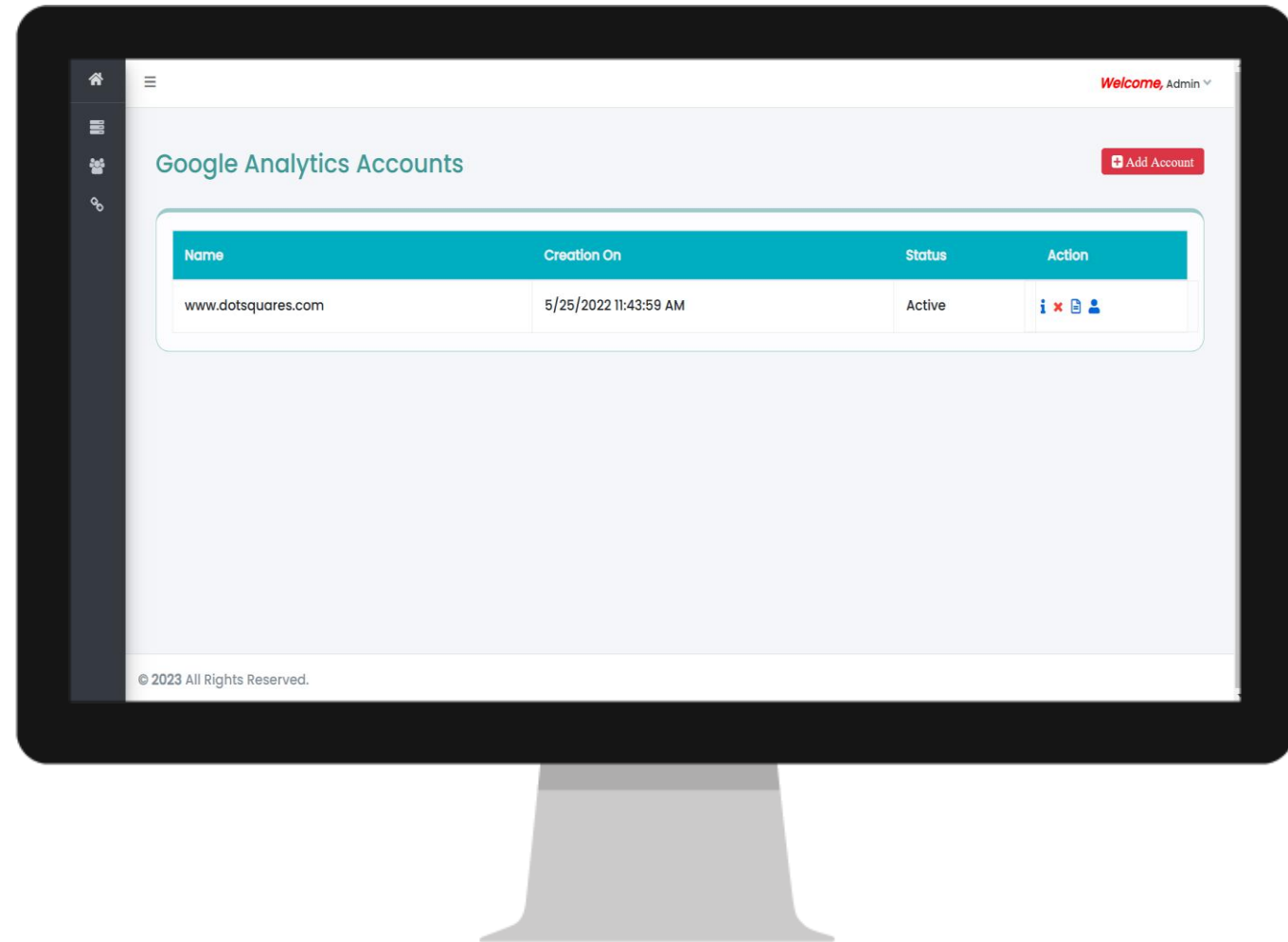
- Add multiple linked In accounts.
- Bifurcation of various linked In accounts if connected with single Email address.
- Deleting connected LinkedIn accounts.
- Assigning various LinkedIn accounts to various different users



Features

Google Analytics Account Management

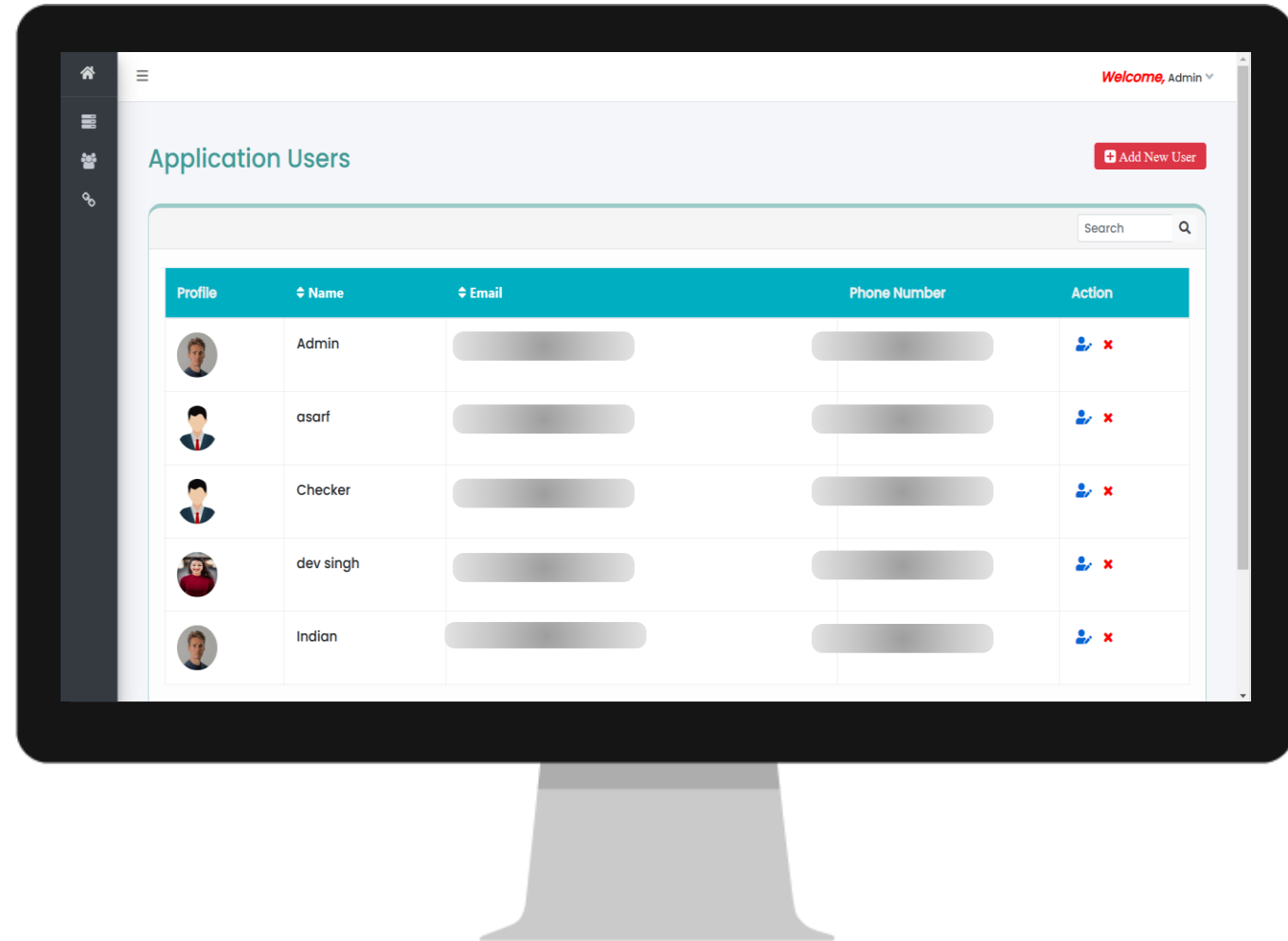
- Add multiple Google Analytics accounts.
- Bifurcation of various Google Analytics accounts if connected with single Email address.
- Deleting connected Google Analytics accounts.
- Assigning various Google Analytics accounts to various different users.
- View account summary of any account individually.



Features

User Management

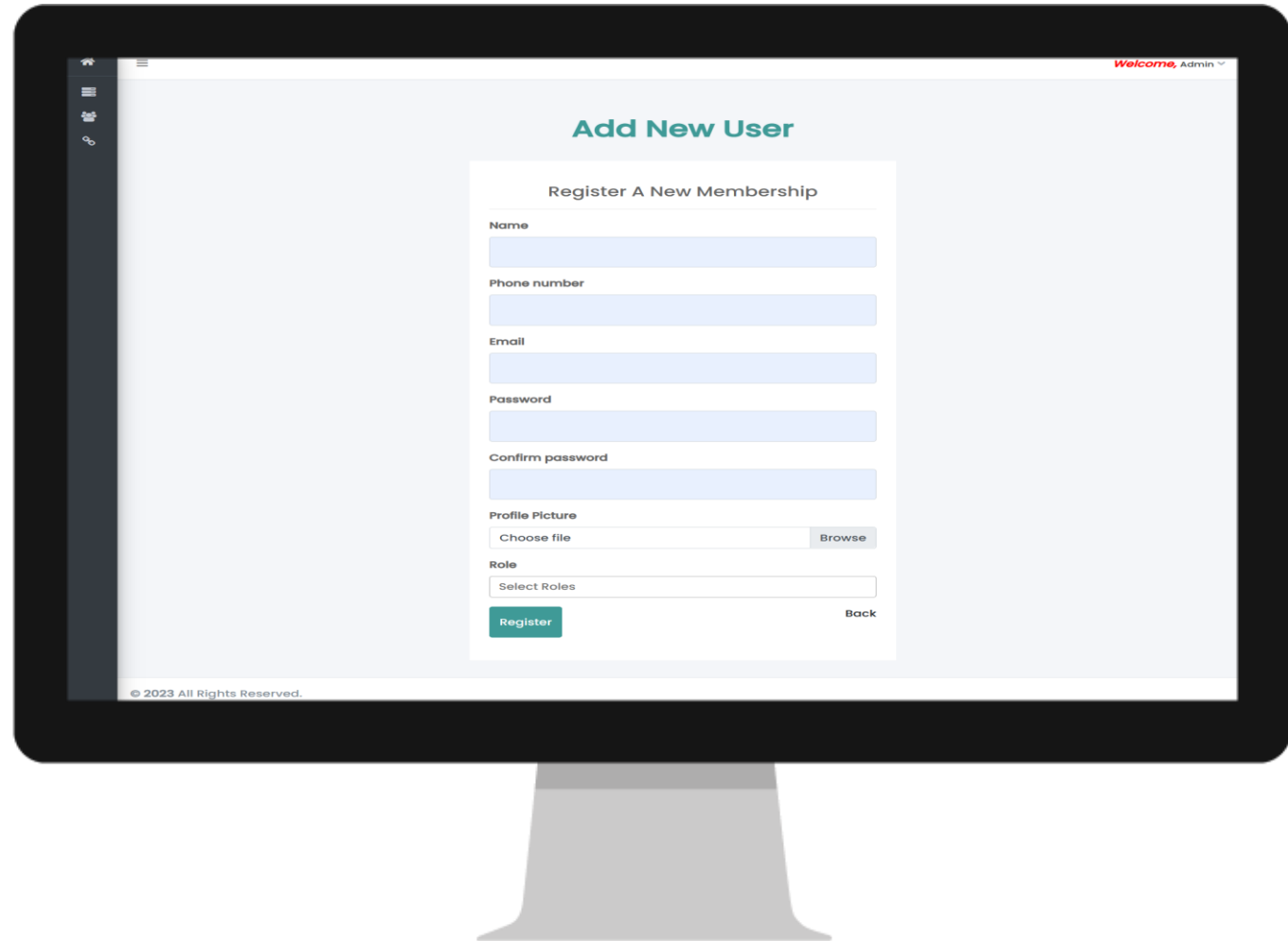
- Create and manage users easily
- Search Keyword functionality for ease of access
- View, Edit, Delete the users in a click
- Add avatar , signature, roles, employment type, etc.
- Set module wise permissions for a user



Features

Role Management

- Manage User roles
 - View
 - Add
 - Edit
 - Delete
 - Manage permissions



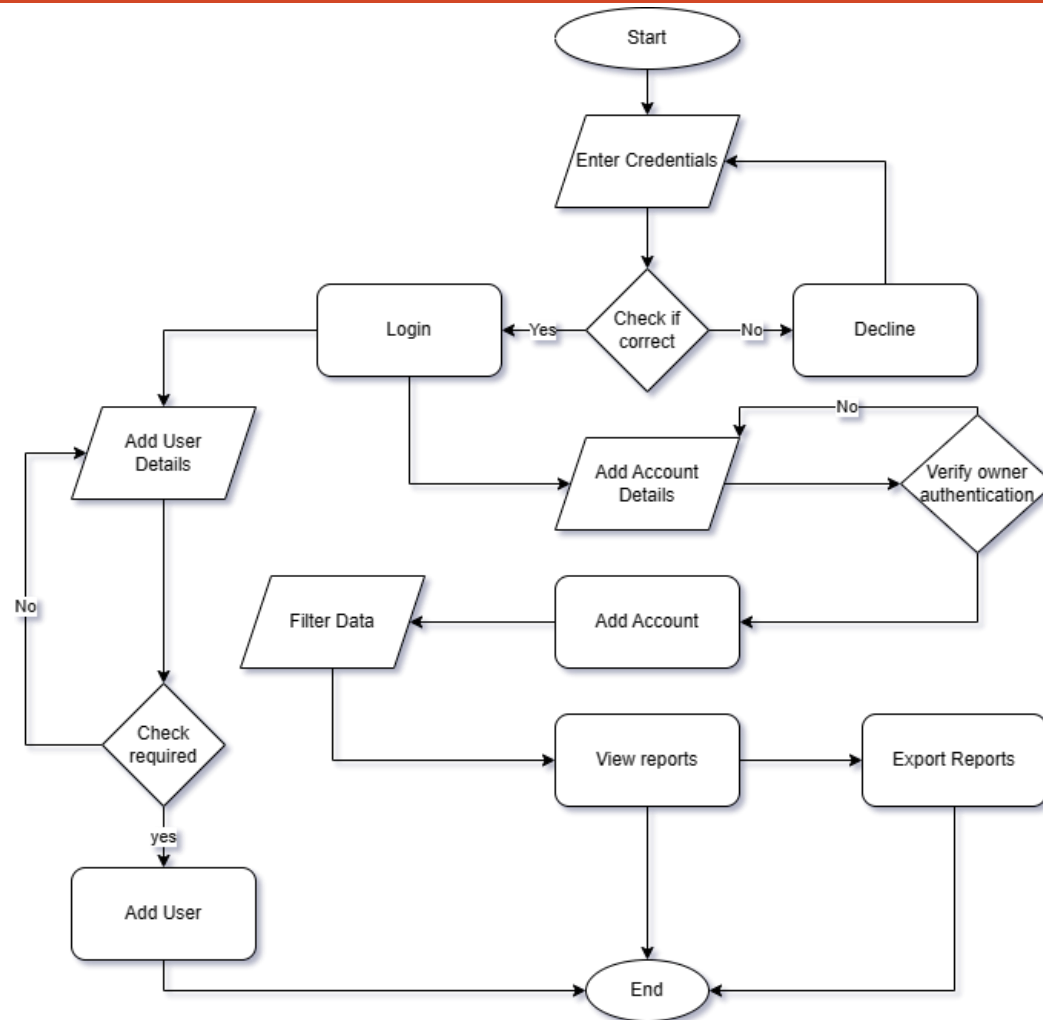
Features

Manage reports

- View complete analytics of LinkedIn and Google Analytics accounts
- Filter reports based on posts, page or modules.
- Views the graphical representation of data.
- Download all the reports customized as per your needs.
- Compare reports based on various time frames.



Application work flow



Thank You!