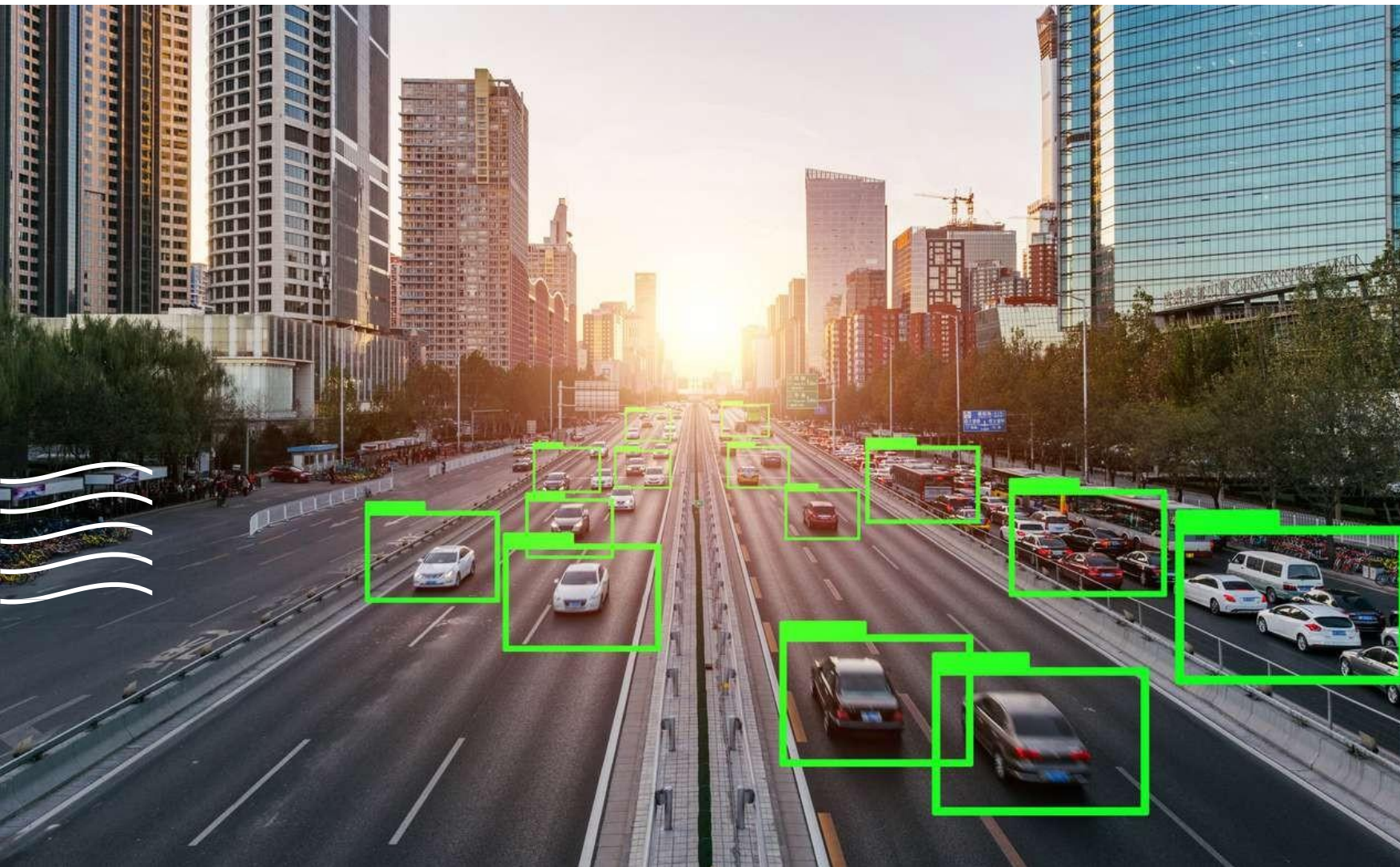




Your #1 data labeling service provider

Personal. Fast. Reliable.



COMPANY SUMMARY

Enlabeler offers end-to-end solutions for the cleaning-up, classification and labeling of datasets. Our platform turns raw, unlabeled data into high-quality training data.

Our team of domain experts works with different data types, for a diverse range of industries.

Our workforce delivers high quality training datasets in the following categories

- Computer Vision
- Natural Language Processing
- Entity Extraction & Text Classification
- Data Processing



How We Work

We offer end-to-end services through our own platform or within your systems environment. In both cases we help you transform your data into highly accurate training datasets. We can then support you with the training and implementation of ML models to provide near real-time insights and analytics with every drone flight.

OUR SERVICES



IMAGE ANNOTATION

Annotation of images to train computer vision models for a diverse range of industries.



AUDIO TRANSCRIPTION

Speech To Text transcriptions through our customised STT platform for the implementation of NLP models.



DOCUMENT PROCESSING

Extract key information from any document-based data for OCR or analysis and classification of large databases of quantitative data.



VIDEO ANNOTATION

Annotate moving objects in video frames for the implementation of object detection, behavioural analysis and tracking models.



TRANSLATION

Multilingual translations for media or chatbot purposes, or to train NLP models. Languages include (different accents of) English, Dutch, Kiswahili, Afrikaans, isiZulu, isiXhosa, Sesotho & Sepedi.



TEXT ANNOTATION

Text labeling or annotation for models focused on Natural Language Understanding, entity recognition and sentiment analysis.



ENLABELER

ANNOTATE

Computer vision technology for images or video annotation. We support a range of annotation types:

- Bounding Box
- Polygon
- Polyline
- Semantic Segmentation
- Key Points
- Cuboids

END-TO-END OFFERING: DRONE EXAMPLE



Drone Flight & Image Processing

- Drones collect images / video during flight
- Images / videos processed at source and loaded to secure data pipeline
- Images / videos converted and cleaned up

Enlabeler Annotate

- Images ingested to Enlabeler Annotate for annotation
- Enlabeler Annotate workflow, QA and delivery of high quality training dataset
- Model Predictions improved for retraining purposes

Model Training & Deployment

- Training dataset feeds to ML model for training
- Model trained & re-trained on a continuous basis
- Fine tune model towards 99% accuracy

Insights & Analytics

- ML Model produce insights & analytics in near real-time
- Allow for preventative intervention and improved performance
- Companies can focus on their core operations

USE CASES



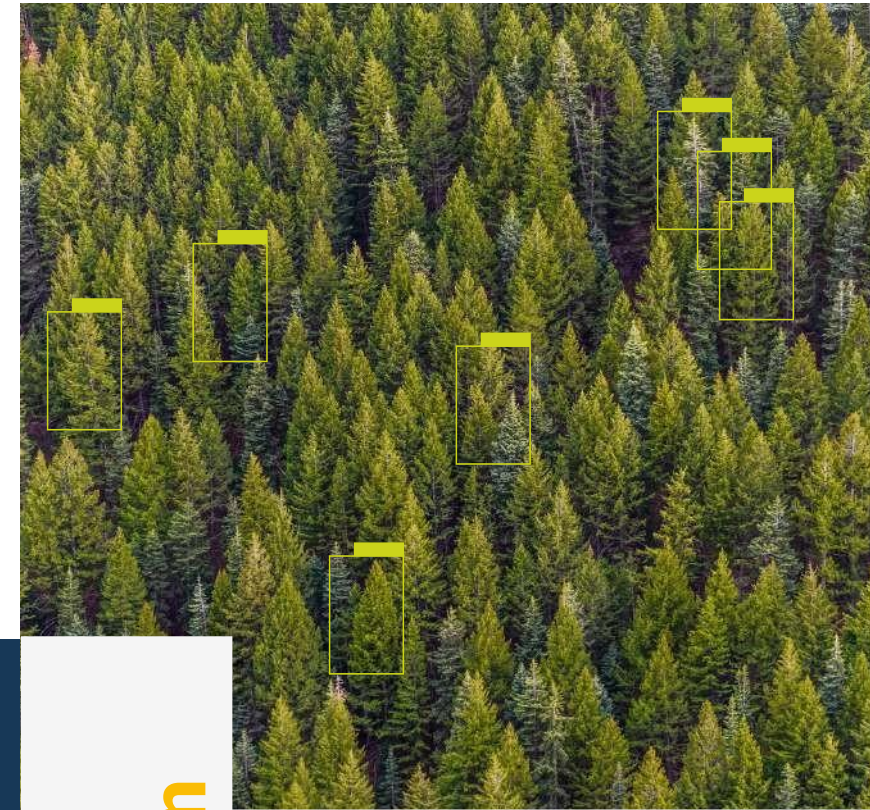
Agriculture

Fruit annotation for yield estimation to assist farmers with running more productive farming operations.



Predictive Maintenance

Deliver annotated datasets to train predictive maintenance models to assist with the automated inspection of infrastructure or mining assets.



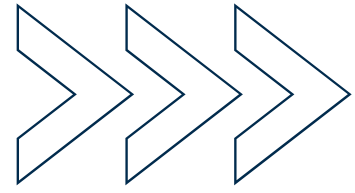
Nature Conservation

Prepared datasets to train an anomaly detection model to help identify dead pine trees as part of the fight to preserve natural forests across the globe.

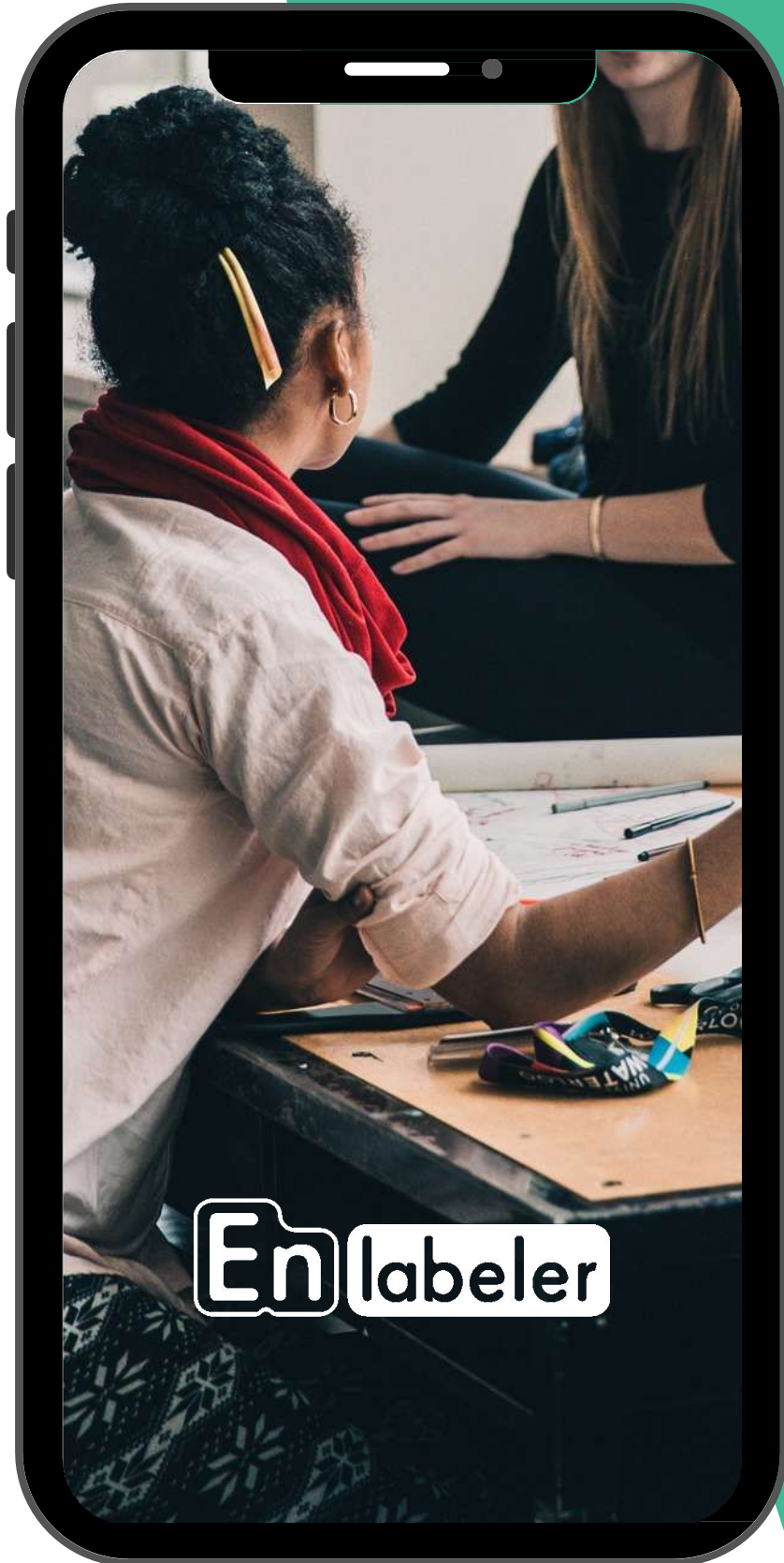
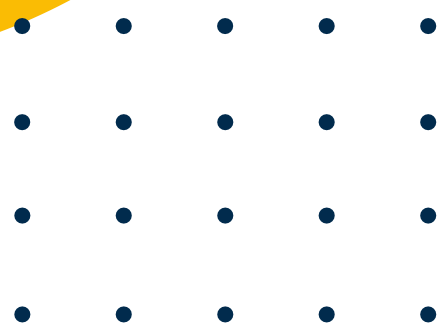


Electric Power Supply Inspection

Create training dataset for the implementation of an automated electric power supply inspection model for fault detections.



WHY WORK WITH US?



Quality

- High quality output guaranteed
- QA build into each process step & tools
- World-class cross validation workflow

Speed

- We like deadline challenges
- Quick response times on all communication
- Ability to scale up volumes within 1 week

Reliable

- We deliver upon our promises
- Service oriented approach and workforce
- Data security and privacy processes guaranteed

Impact

- Creating remote tech jobs in Africa (4IR)
- Entry level opportunities for talented people
- Grow next generation of data professionals

Benefits for The Client



Save Time



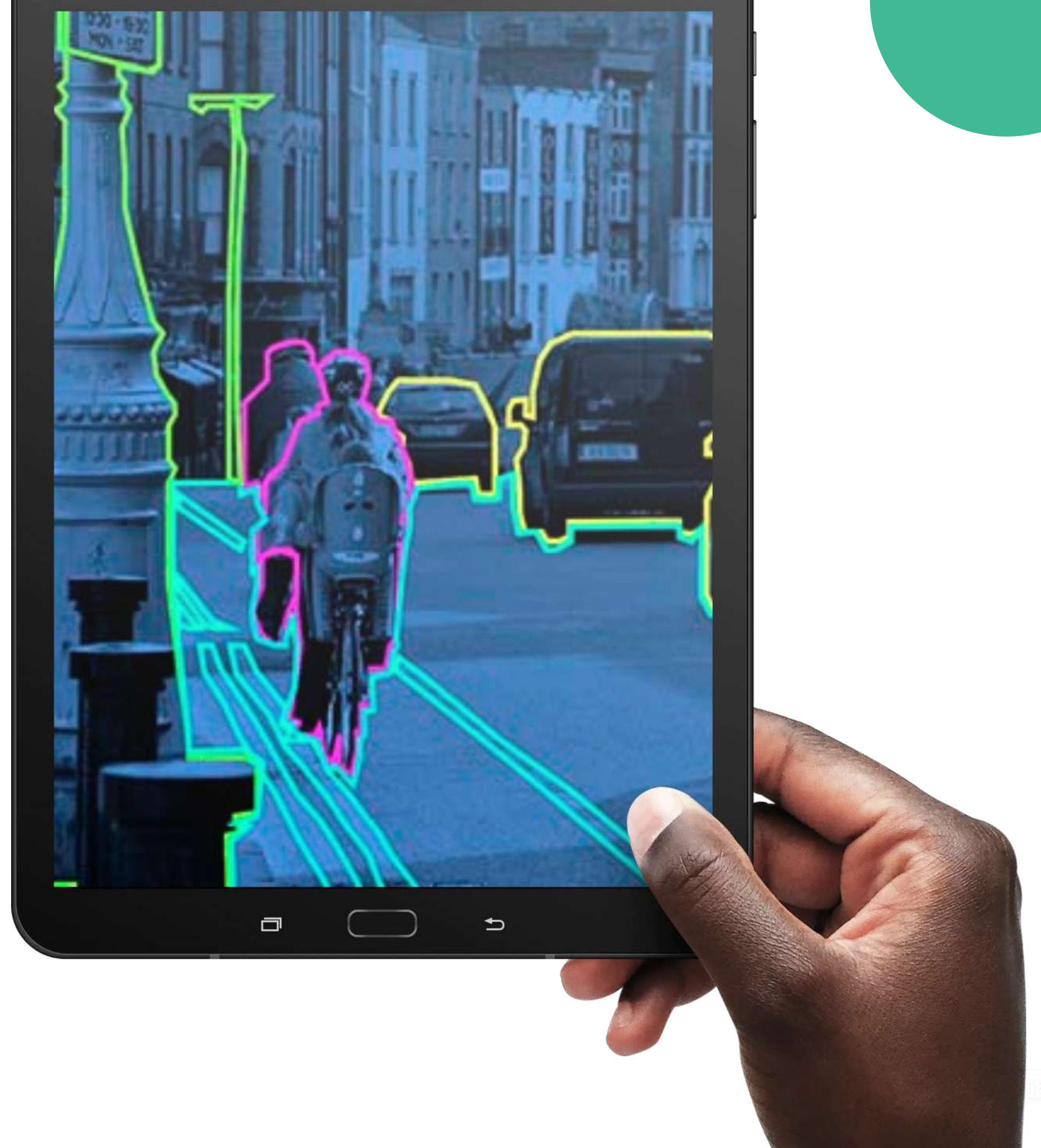
Centralised Label Design



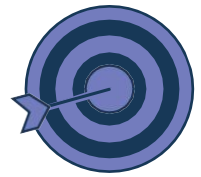
Assured Data Integrity



Compliance



Superhuman Intelligence



Precision Metrics

Our highly skilled workforce of labelers combined with our cutting edge technology ensures top labeling performance with a world class precision rate.



One Stop Shop

Our data platform is an end-to-end solution for companies who want to automate business processes with high-quality annotated data and need assistance with the classification, cleaning-up and labelling of raw data sets.




Your Data Is Yours!



We take data privacy very seriously!

Our cloud-based platforms and services are hosted in secure environments and are fully GDPR and POPI compliant. We build secure data pipelines to/from our clients to make sure there are no data leakages. Our in-house team is under strict NDA to protect your business data confidentiality.





Cape Town



Johannesburg



The Netherlands

Contact Us

Thank You!

