

# ERP NITRO DATA ACCELERATOR

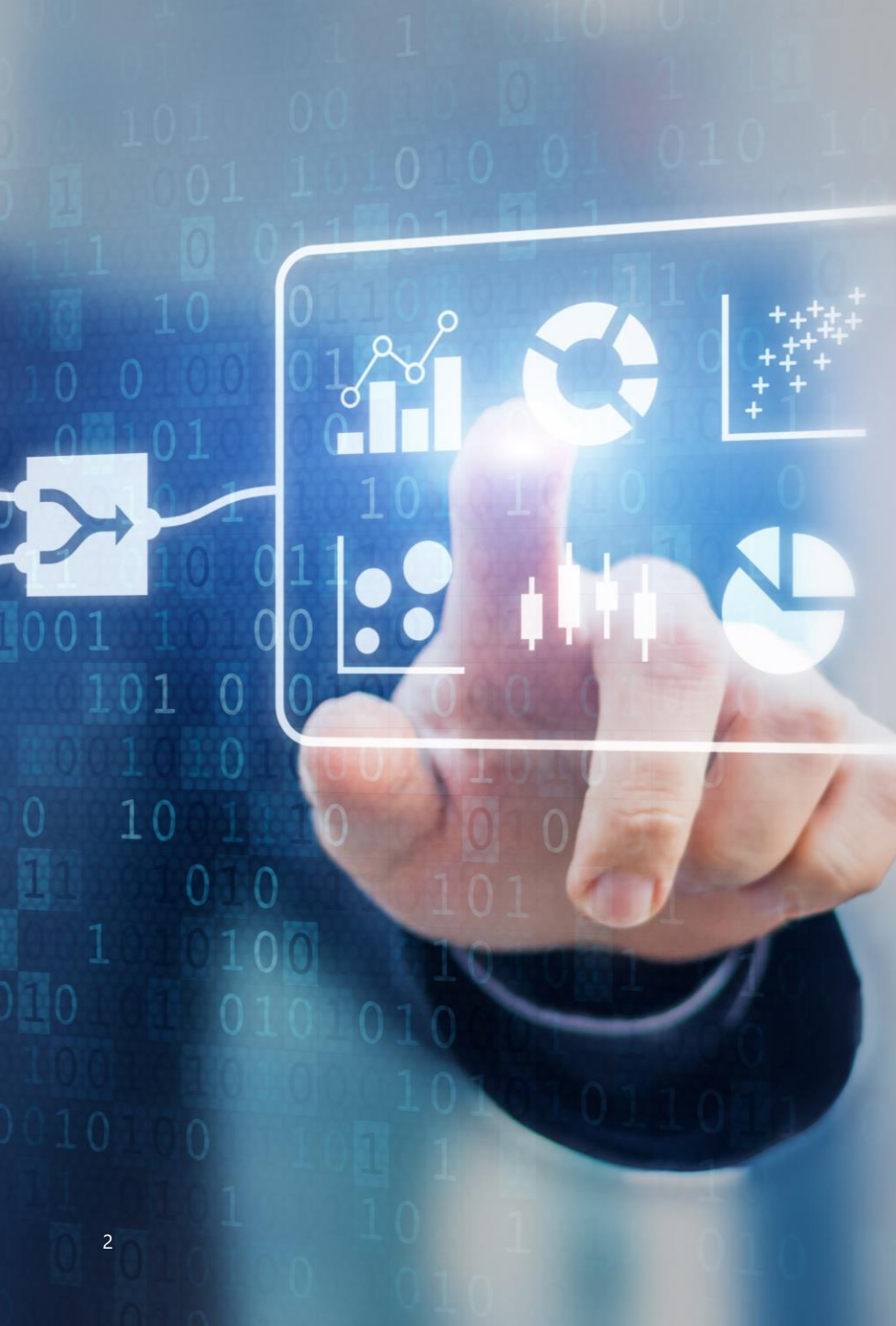
Avoid proprietary data lock-in, easily share data,  
and build your modern data stack.

 **Microsoft**  
Solutions Partner  
Microsoft Cloud

 **Microsoft**  
Solutions Partner  
Data & AI  
Azure

Specialist  
Windows Server and SQL Server  
Migration  
Analytics

 **REPLY**  
VALOREM



# ORGANIZATIONS DON'T HAVE CONTROL OVER THEIR OWN DATA.

Whether you're looking to extract SAP to the cloud, use modern AI & analytics tools, or combine with other data sources, the ERP Nitro Data Accelerator is meant to give you full control over your data & reporting and deliver value, fast.

## CHALLENGES

- Data is locked into SAP
- No modern AI & analytics tools
- Limited access to historical data

## IDEAL SOLUTION

- Avoid proprietary data lock-in
- Easily share data
- Build your modern data stack

## DESIRED OUTCOMES

- Full control over data and reporting
- Combine all data for AI & Analytics
- Efficient, high quality historical data – future value/cost savings



# ERP NITRO DATA ACCELERATOR

Valorem Reply's **ERP Nitro Data Accelerator** is **designed** for enterprises that want to **cut costs and use advanced analytics tools** to make **better decisions** with large volumes of data.

1

**REDUCTION IN  
DEPLOYMENT TIME**

3

**SMALLER DATA  
PLATFORM TEAM**

2

**DECREASE IN  
CONSUMPTION COSTS**

4

**100% TRUST IN  
THE DATA**



# VALOREM REPLY ERP NITRO DATA ACCELERATOR & DATABRICKS ON AZURE

Valorem Reply's expertise across the Azure Cloud can help you extract maximum value from your most important data.

**Data Platform  
Deployed by ARM  
Templates**

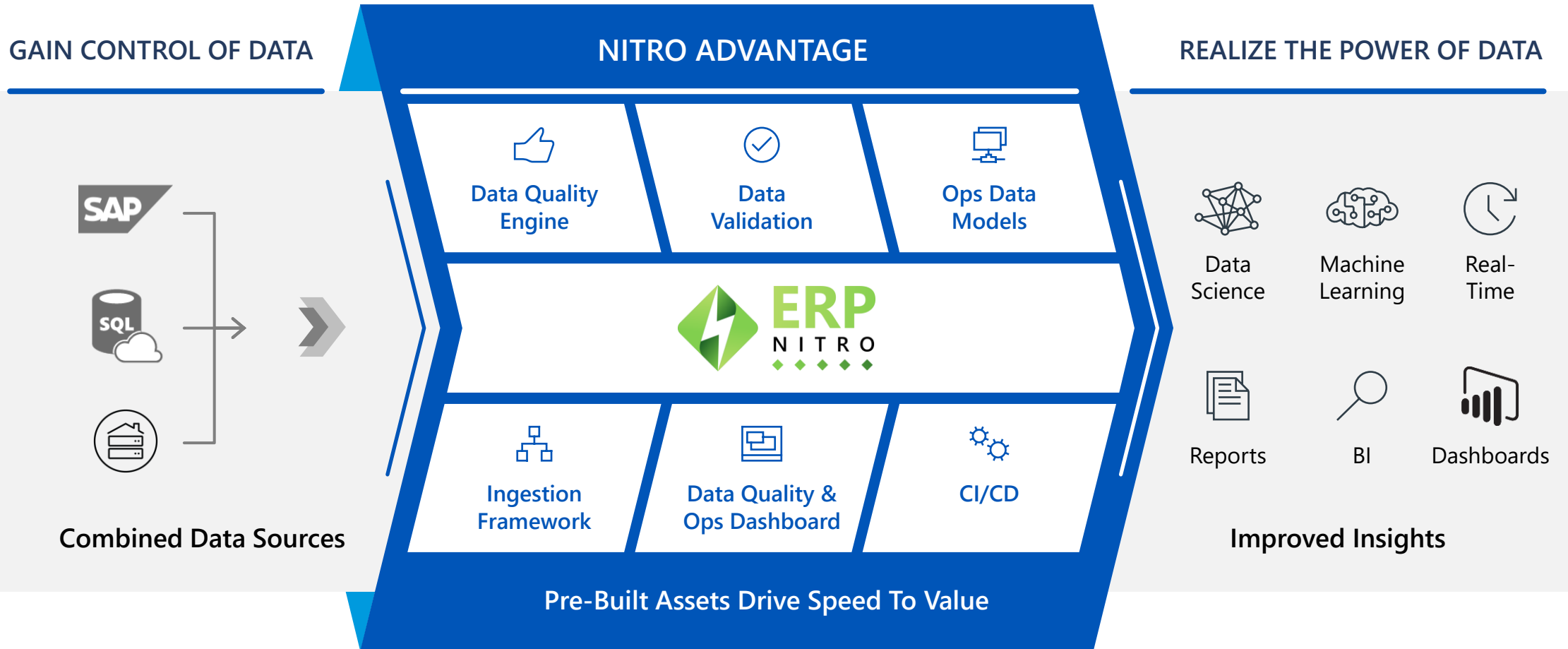
**Ops Dashboard that  
Monitors Computing  
and Storage Costs**

**Prebuilt CI/CD and  
Ingestion Engine**

**Data Quality  
Scorecard and Data  
Validation Checks &  
Alerts**



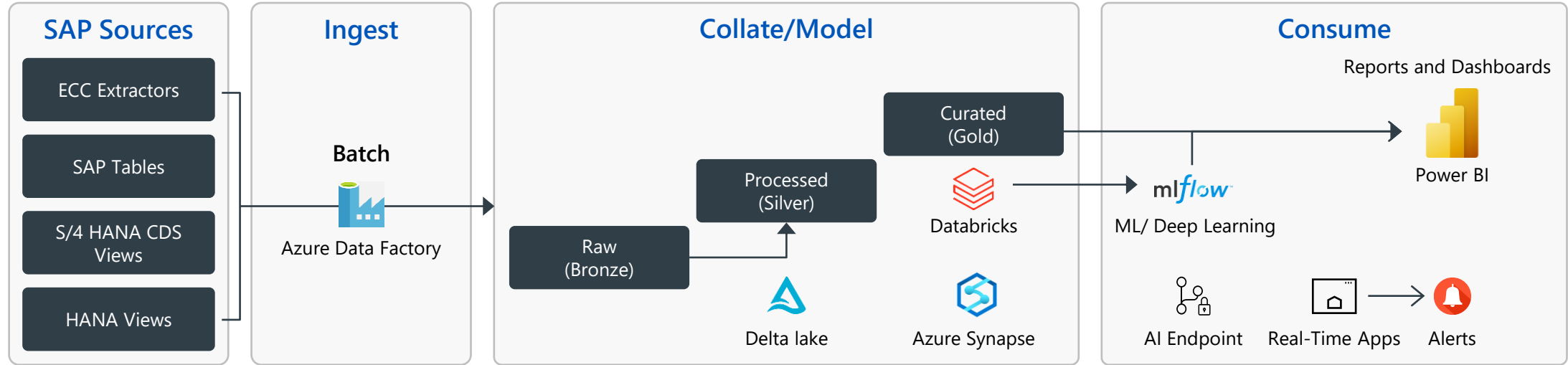
# ERP NITRO UNLOCKS SAP DATA VALUE



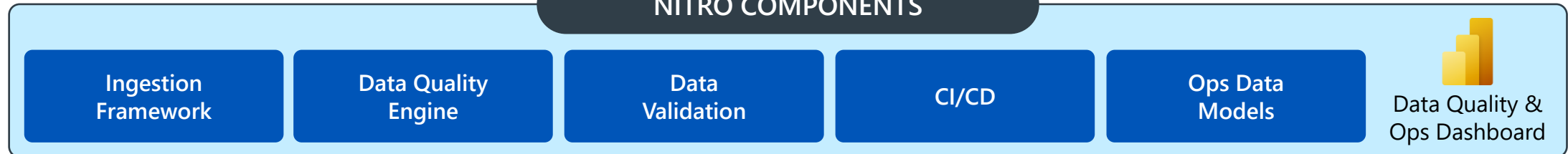
NITRO PLATFORM



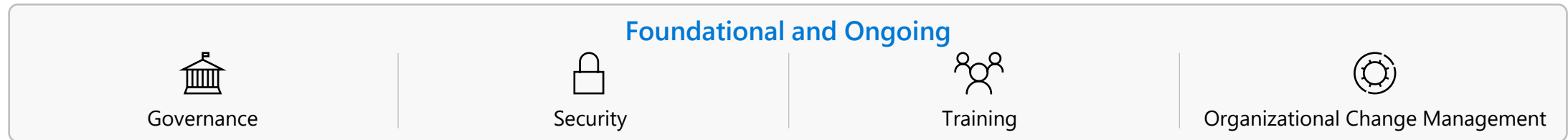
# ERP NITRO INTEGRATION



## NITRO COMPONENTS



## Foundational and Ongoing



# INDUSTRY BENEFITS

## MANUFACTURERS

- Detect and predict equipment failures
- Optimize production processes
- Improve efficiency

## ENERGY COMPANIES

- Predict energy consumption
- Optimize energy production and distribution
- Improve the reliability of the power grid



## SUPPLY CHAIN

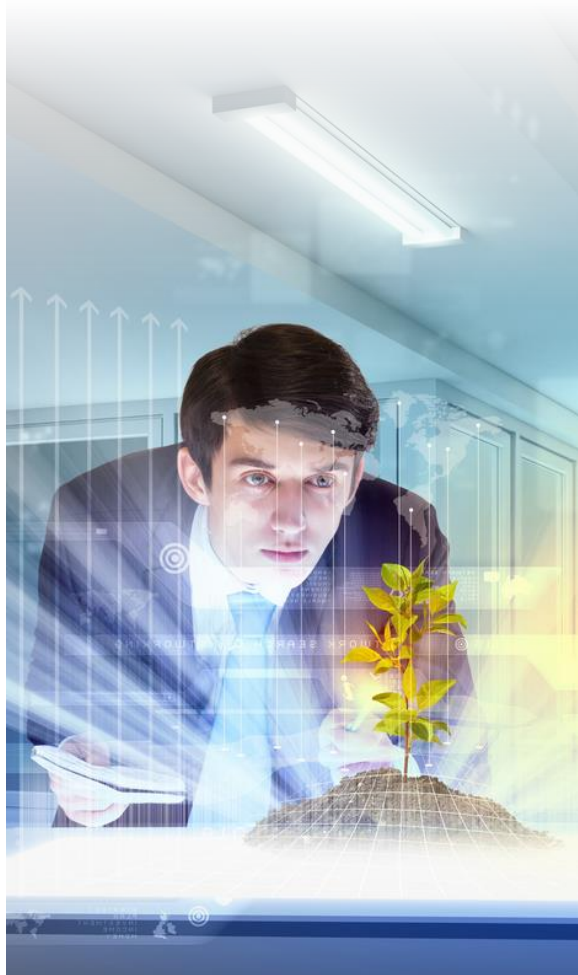
- Optimize supply chain operations
- Minimize delays
- Improve customer service

## RETAIL

- Personalize marketing campaigns
- Optimize pricing and inventory management
- Improve the customer experience



# SAP ON AZURE FOR GLOBAL HORTICULTURE



## PROBLEMS & OPPORTUNITIES



- Large global horticulture company in need of modernizing their IT infrastructure.
- Provide reporting tools for all user types.
- Transition from SAP on-prem to SAP S/4HANA in the cloud.

## STRATEGIC SOLUTIONS



- Recreate the current on-prem SAP and Power BI reporting environment in Azure.
- Define an end-to-end automated data approach.
- An adaptive and resilient platform which enables reporting, analytics, and data science.

## BUSINESS IMPACT



- A modern data enterprise ecosystem capable of supporting the organization's IT infrastructure and Security team along their data modernization journey.
- Migrating to Azure saved costs and gives full control over data and reporting.
- A comprehensive learning plan for the data team to upskill while actively collaborating on the data platform.





# **LEARN MORE ABOUT VALOREM REPLY'S ERP DATA NITRO ACCELERATOR**

Learn more: [go.valorem.com/Nitro Accelerator.html](https://go.valorem.com/Nitro%20Accelerator.html)

