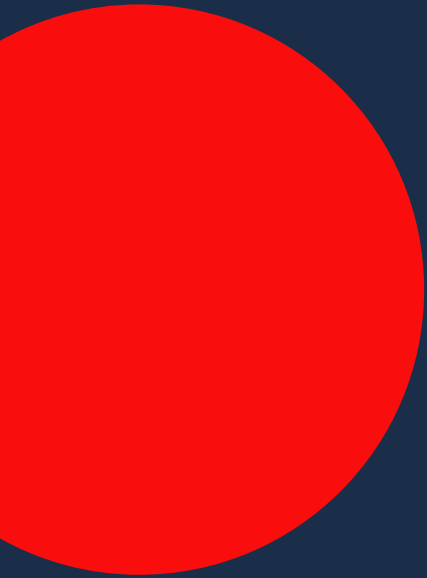


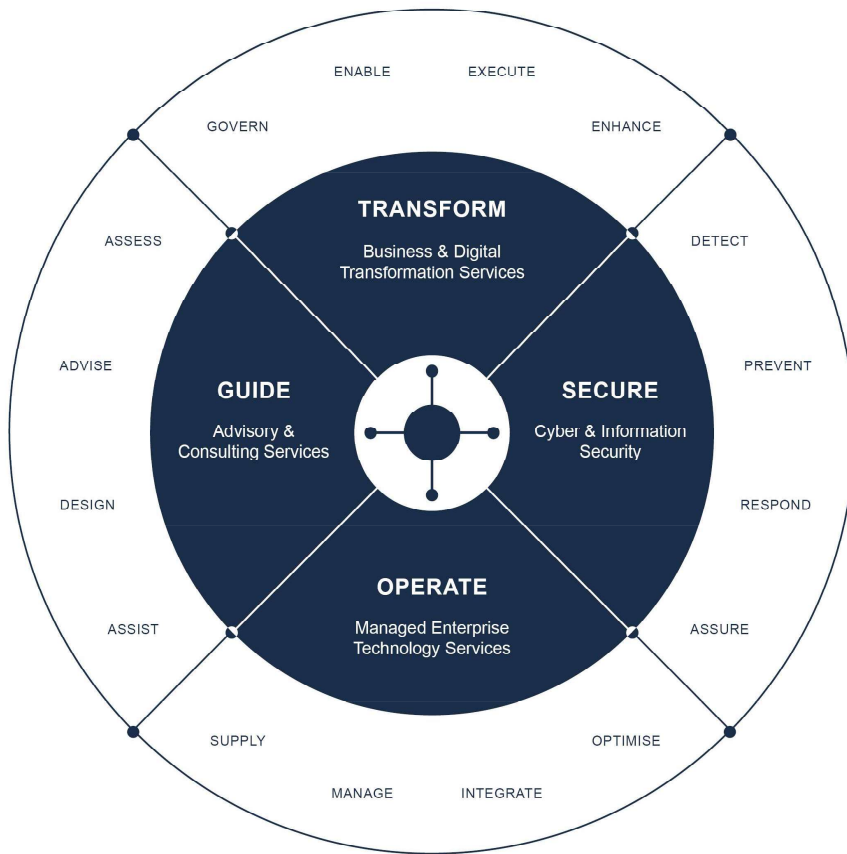
INTERNAL

# KINETIC IT CAPABILITIES PEDIGREE SERVICES





# WHAT WE DO



# HOW WE DO IT



# WHAT WE DO

INTERNAL



Automation & AI



Cloud & Hybrid



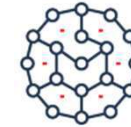
Cyber Security



Data & Analytics



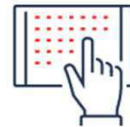
Digital Workspace



ESM



Infrastructure



Applications



SIAM

# WHAT WE DO



## Automation & AI

Kinetic IT deploys solutions that leverage the benefits of Artificial Intelligence and Automation, allowing customers to gain greater efficiencies and effectiveness in delivery.



## Cloud & Hybrid

Cloud and Hybrid Cloud is extensive and varied. Kinetic IT assists our customers in all aspects of their cloud journey, whether looking to adopt, migrate or operate.



## Cyber Security

Kinetic IT monitors, assures, and responds to threats in contemporary technology environments, protecting our customers critical assets from exploitation and exposure.



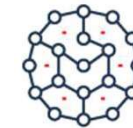
## Data & Analytics

Informed decision-making through analysis and insights are pivotal to the advancement and success of our customers' strategic objectives.



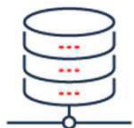
## Digital Workspace

Continuously evolving working conditions have fundamentally changed how we consume and engage with technology. User collaboration and flexibility is at the core of Kinetic IT's Digital Workspace offering.



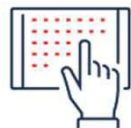
## ESM

Enterprise Service Management leverages the expertise, best practice processes, and technology established across decades of maintaining highly available enterprise scale IT operational environments.



## Infrastructure

Kinetic IT manages critical infrastructure to enterprise scale including compute, storage, network, middle-ware and databases; on-premise, hybrid and in the cloud.



## Applications

Kinetic IT develop, upgrade, test, release and supports managed applications, from low code to custom enterprise solutions.



## SIAM

Service Integration & Management is used to get the best out of your multi-vendor landscape. As a market leader, Kinetic IT can assist you in obtaining optimum performance from your service delivery partners.