

# SIGNAL 1

AI-powered patient insights,  
delivered directly into your workflow

We help you anticipate changes in patients' care needs, enabling more timely and proactive decision-making.

Monitoring patients from admission  
through discharge

Our platform connects directly with your EMR to easily deploy use cases across your enterprise with no data work for your staff.



## Discharge planning

We identify patients who are likely to be discharge ready and surface their discharge barriers to clinical staff.

## Smart staffing

We summarize patients' acuity and nursing needs, enabling a more equitable distribution of work across staff.

## Clinical deterioration

We identify patients who are at high-risk of deterioration and share this information with care teams.

## Our Partners

Trusted by leading North American healthcare and technology organizations.



Ready to put AI to work  
for your hospital?

Contact us today.

Tomi Poutanen, CEO  
tomi@signal1.ai

33 Hazelton Ave, 4th Floor,  
Toronto, ON, M5R 2E3

SIGNAL 1

www.signal1.ai

## Notable Projects

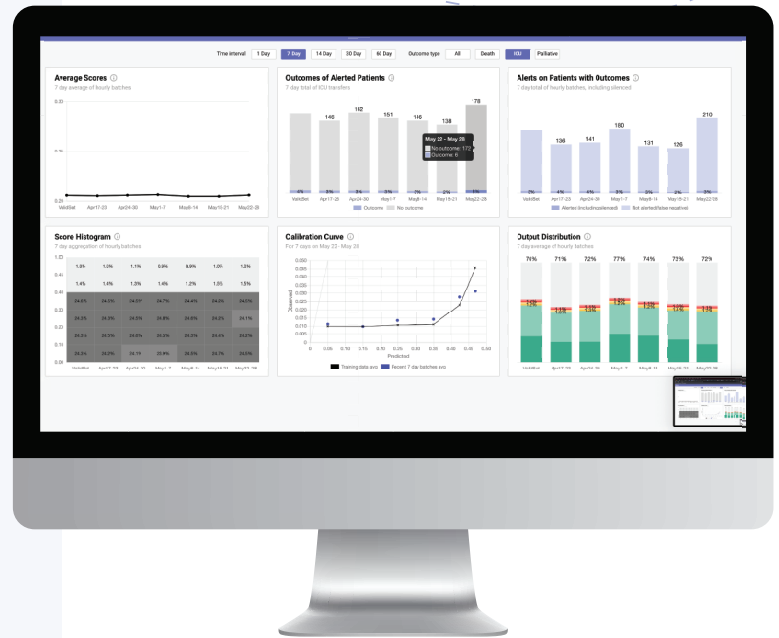
### St. Michael's

Inspired Care.  
Inspiring Science.

The deterioration solution we are developing is based on a model originally built at St. Michael's Hospital in Toronto, Canada and in use there since 2020. Researchers at St. Michael's Hospital estimate that their solution has reduced the mortality rate of high-risk patients in their GIM unit by about 13%.



We partnered with Grand River Hospital in Waterloo, Canada to develop a daily Discharge Priority Report that includes AI-based predictions of which patients are high priority for discharge assessment. That solution is now in daily use in medicine units at the hospital.



Our platform automatically monitors the performance of our AI models in a hospital to ensure no degradation in solution performance.

## Deploy easily and with confidence

### Uses existing data

Our models use existing patient data and require no extra work from your staff.

### Deployed in as little as 60 days

We easily integrate with leading EMRs to enable a quick setup.

### Delivered safely and securely

Our cloud-based platform meets industry standards for privacy and security.



Ready to put AI to work  
for your hospital?

Contact us today.

Tomi Poutanen, CEO  
tomi@signal1.ai

33 Hazelton Ave, 4th Floor,  
Toronto, ON, M5R 2E3

SIGNAL 1

www.signal1.ai