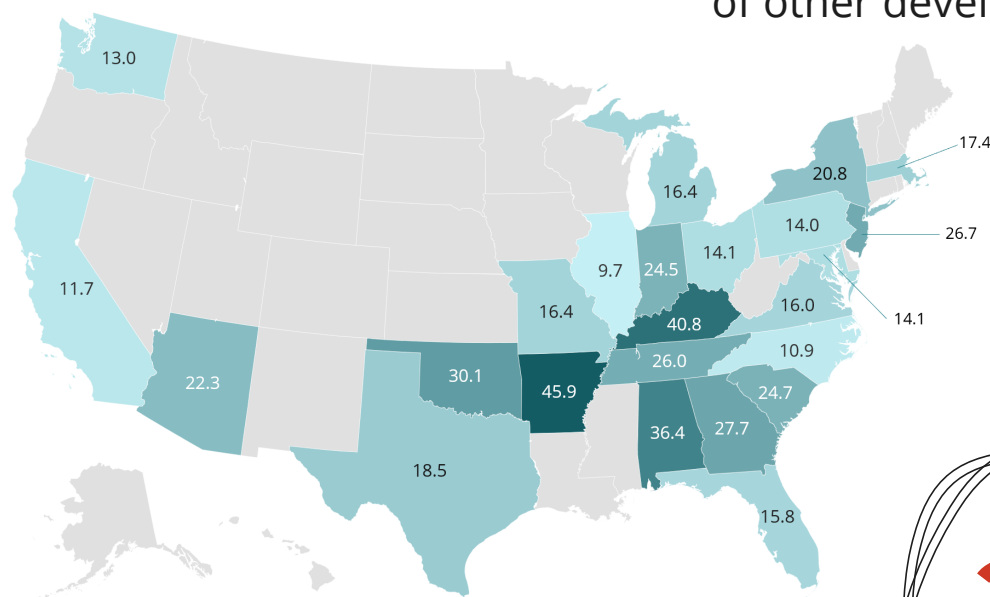


America's Maternal Health Crisis

754 women die each year from causes related to pregnancy, making the U.S. maternal mortality rate **double** that of other developed countries.

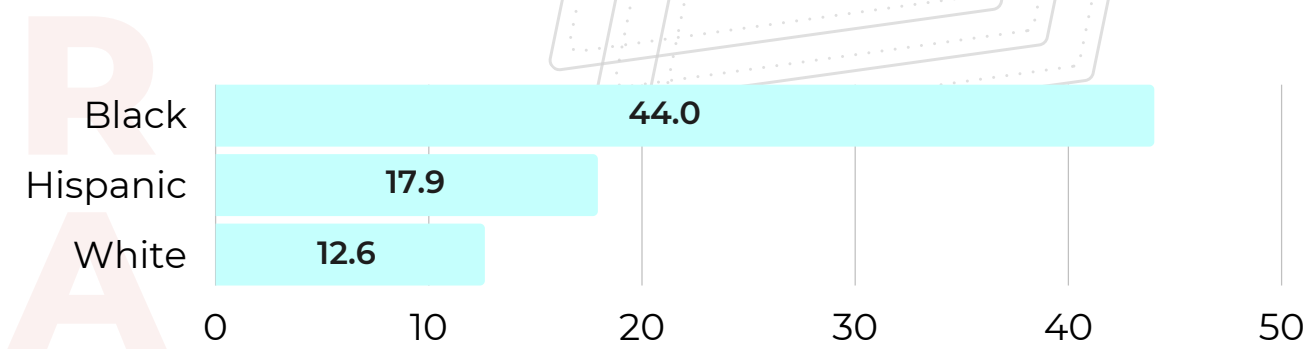
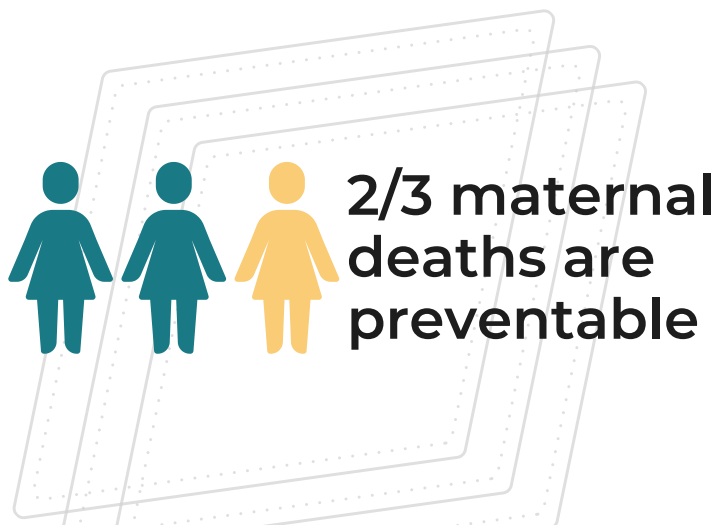
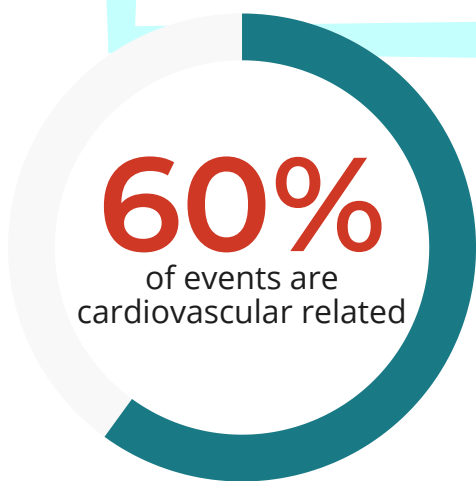


maternal deaths per 100,000 live births per state

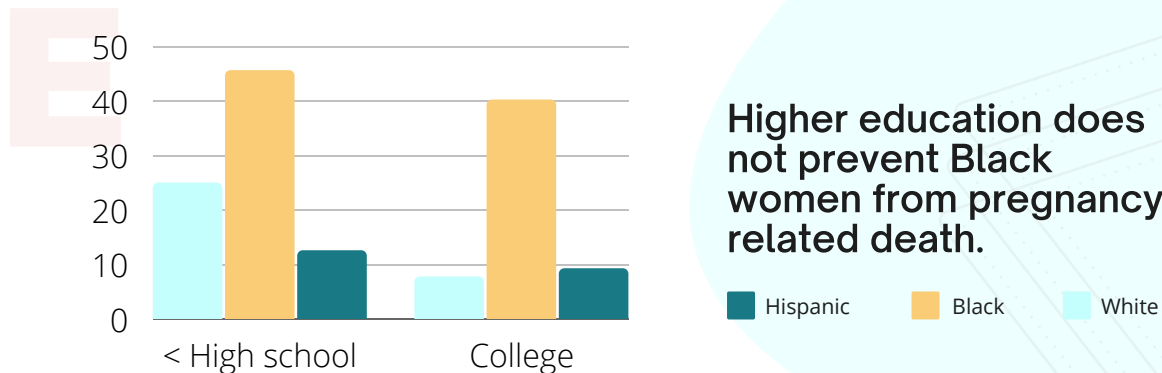
20.1
deaths per 100,000 births in the US

What is Maternal Mortality?

The death of a woman while pregnant or within 42 days of being pregnant, from any cause related to or aggravated by the pregnancy or its management, but not from accidental or incidental causes.



Non-Hispanic Black women are **2.5x** as likely to die from maternal causes as non-Hispanic white women, and **3x** as likely as Hispanic women.



Higher education does not prevent Black women from pregnancy related death.

NOTE: The terms "woman" and "women" are used to describe individuals whose sex assigned at birth was female and are inclusive of all present gender identities, including cisgender, transgender, and non-binary.

- <https://www.who.int/data/gho/indicator-metadata-registry/imr-details/4622>
- <https://www.cdc.gov/nchs/data/hestat/maternal-mortality-2021/maternal-mortality-2021.htm>
- <https://www.cdcfoundation.org/sites/default/files/files/ReportfromNineMMRCs.pdf>
- <https://www.cdc.gov/nchs/maternal-mortality/MMR-2018-State-Data-508.pdf>
- <https://www.commonwealthfund.org/publications/issue-briefs/2020/nov/maternal-mortality-maternity-care-us-compared-10-countries>
- <https://www.commonwealthfund.org/publications/issue-brief-report/2020/dec/maternal-mortality-united-states-primer>

