



Digital Motor Claim Management

Microsoft
Partner



Gold AI Inner Circle
Gold Cloud Platform
Gold Application Development
Gold Application Integration
Gold Data Analytics
Gold Data Platform
Gold DevOps





Anupam Gupta, Co-founder , Head of US Operations

Anupam brings in 21 years of Development and Global Consulting experience with Enterprise Software Solutions. He has been advising customers on Enterprise strategy and Technology Road maps. He Holds a B.Tech from IIT Bombay



Prankul Middha, Enterprise Solution Specialist

Prankul has over 20 years of experience from the US, Europe and India within Consultancy, Engineering, Software, Business development and Solution sales. He is currently expanding Celebal Tech's practice in the Nordics and continental Europe. He Holds a B.Tech from IIT Delhi



Anish Ashirgade, Head Celebal Tech. Singapore

Anish has 20+ years of experience in SAP Analytics with expertise enterprise in Automation. Currently he leads the SAP practise for Celebal Asia pacific region and is based out of Singapore



Mukul Biswas, Head Celebal Tech. UK

Mukul has 22+ years of experience in SAP and has led large practises of SAP analytics and Implementation for Global SI around the world. Mukul holds a B.Tech from IIT Delhi



Anirudh Kala, Co-founder, Director, Chief Data Scientist

Anirudh is an expert in Machine Learning techniques, Artificial Intelligence and Natural Language Processing using Azure and Cortana Services. He has led AI ML COE for various organization throughout the globe.



Dinesh Thawani, Principal

Dinesh has 20+ years of experience in delivering Enterprise Solutions and has led multiple practises in various disciplines of Computer Science. He is a fellow from Tata Institute of Fundamental Research.



Abhishek Goyal, Solutions Sales Principal

Abhishek brings in about 20 years of Sales and Marketing experience across Industry domains. Having a keen Engineering interest and background empowers Abhishek in Technology Solution Sales and Services.



Jon Myklebust - Strategic Advisor

Jon has been a Senior IT executive at Fortune 500 companies such as The Walt Disney Company (Technical Project Manager – IT Strategic Planning), Warner Bros. (VP of BI and DW) and Sony Pictures (VP of SAP).



500+
Employees



210+
Azure Certifications



Global Presence
US
UK
Singapore
India



Pioneers in SAP
Surround on Azure

Microsoft
Partner



- Gold AI Inner Circle
- Gold Cloud Platform
- Gold Application Development
- Gold Application Integration
- Gold Data Analytics
- Gold Data Platform
- Gold DevOps

5 Solution Partner – Productivity, Apps, Infra & Analytics

Data and AI



Big Data



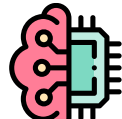
Natural Language Processing



Azure Intelligent Cloud



Cognitive Vision

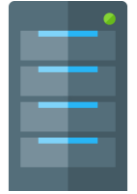


AI/ ML

Apps and Infra



Azure VM



Azure Migration



Azure DevOps

Business Applications



Power Apps



Power Platform



Power Automate



Power BI



Microsoft Dynamics 365

Security



API Management



Multi-Factor Authenticity



Azure Active Directory

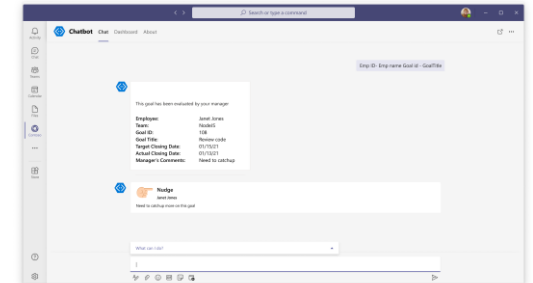


Personal Identity Management



Identity and Access Management

Modern Workplace



Chatbot

Automated Digital Approvals for Insurance Renewals and Processing Motor Claims

India is one of the world's largest and fastest-growing auto insurance markets – but until now, the sector has had to rely on traditional ways to renew lapsed policies or make repair claims. Both services have required inspectors to physically look over vehicles and make damage assessments. In a country with more than 230 million vehicles and 1200 auto accidents every day, scheduling inspections and getting approvals can keep cars and policyholders off the road for days or longer. A more convenient way was needed.

Celebal's Motor Claim Solution allows customers to buy or renew policies anytime, anywhere. Artificial intelligence (AI), Machine learning (ML), and a combination of extensive algorithms helps to identify the car images into frames and identify the various parts of the car to look for damage. In most cases the AI module can make a judgement very quickly, reducing the time from days to mere minutes.

The Solution

An end-to-end platform where customers can buy, renew and claim insurance by accessing the portal through any device. Using real time processing capabilities, the solution helps in approving the claim in couple of minutes making this solution fast and handy. The solution is backed with State-of-Art mask R-CNN algorithm which makes the platform reliable and accurate at damage detection.

- **Free up insurance inspectors' time** to focus on complex claims like head on collisions and spend quality time with vehicle owners to help reduce their stress.
- **Improving customer experience and business outcomes.**
- **Reduce Processing time** – The solution can help complete simple claims in days, instead of weeks once the module is launched.



Azure Blob Storage



ML Services



Azure Custom
Vision



Azure GPU
VM



Azure web App

Business Scenario

India is one of the world's largest and fastest-growing auto insurance markets – but until now, the sector has had to rely on traditional ways to renew lapsed policies or make repair claims. Both services have required inspectors to physically look over vehicles and make damage assessments. In a country with more than 230 million vehicles and 1200 auto accidents every day, scheduling inspections and getting approvals can keep cars and policyholders off the road for days or longer. A more convenient way was needed.

Celebal's Motor Claim Solution allows customers to buy or renew policies anytime, anywhere. Artificial intelligence (AI), Machine learning (ML), and a combination of extensive algorithms helps to identify the car images into frames and identify the various parts of the car to look for damage. In most cases the AI module can make a judgement very quickly, reducing the time from days to mere minutes.

Press Release: [Here's why reliance general insurance bullish over ai](#)

Customer Video Case Study: [Microsoft India - Reliance General Insurance leverages Microsoft Azure and AI to build a future ready claims process.](#)

Solution and Impact

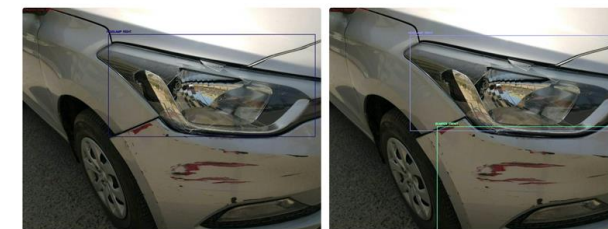
An end-to-end platform where customers can buy, renew and claim insurance by accessing the portal through any device. Using real time processing capabilities, the solution helps in approving the claim in couple of minutes making this solution fast and handy. The solution is backed with State-of-Art mask R-CNN algorithm which makes the platform reliable and accurate at damage detection.

- **Free up insurance inspectors' time** to focus on complex claims like head on collisions and spend quality time with vehicle owners to help reduce their stress.
- **Improving customer experience** and business outcomes.
- **Reduce Processing time** – The solution can help complete simple claims in days, instead of weeks once the module is launched.



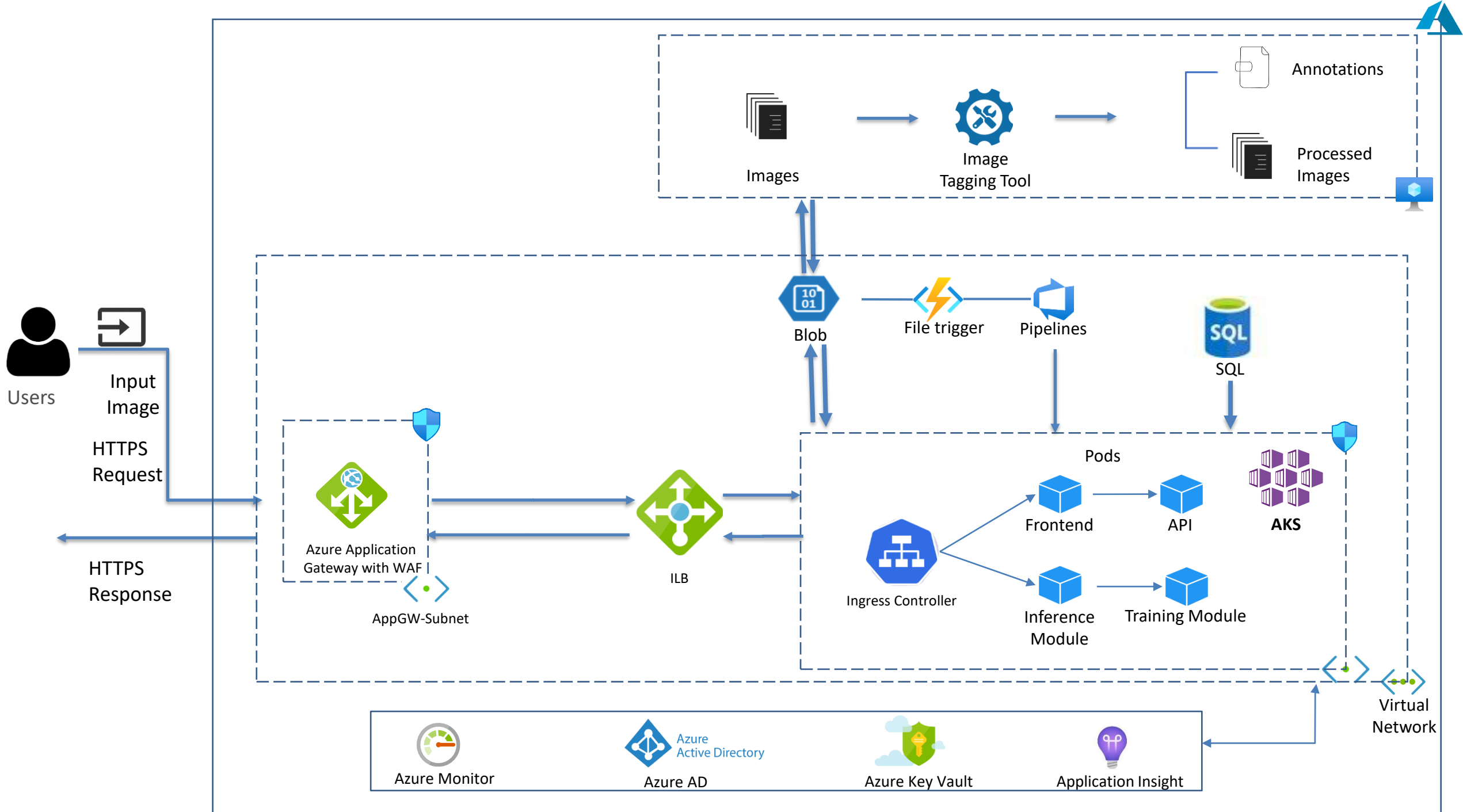
Defects Detected

- BUMPER FRONT- broken
- FRONT WINDSHIELD GLASS- broken
- HEADLAMP RIGHT- broken
- HOOD ASSY- Dent



Defects Detected

- BUMPER FRONT- broken
- HEADLAMP RIGHT- broken



Thank You