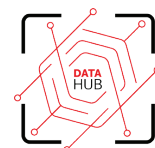




ACCELERATE YOUR DATA STRATEGY

Build, integrate, and scale with Anchormen's Data Hub



Companies that are looking to become data-driven, can activate their data and information and start generating results and insights in weeks rather than months. The Anchormen Data Hub is an innovative solution that combines all kinds of data and data sources into a powerful, agile, and cost-effective platform to enable diverse business cases.

Leveraging our data expertise and a solid cloud foundation, the Data Hub combines structured, unstructured, and real-time data and information from traditional data warehouses, business intelligence and various other data sources, like e-commerce and ERP-systems. Nothing is out of reach!

Solid architecture, unique capabilities

Many enterprises handle large volumes of data, but miss the ability to do advanced analytics and predictions with (real-time) data from multiple, internal and external sources. Our Data Hub is the best choice for your organization because it is:

Fast



Activate your company's data and gain meaningful results in the shortest possible time

Proven



Solid technology based on best IT and data architecture practices to build customized solution

Business driven



Agile solution that adds instant value for businesses that aim to transform, innovate, and grow.

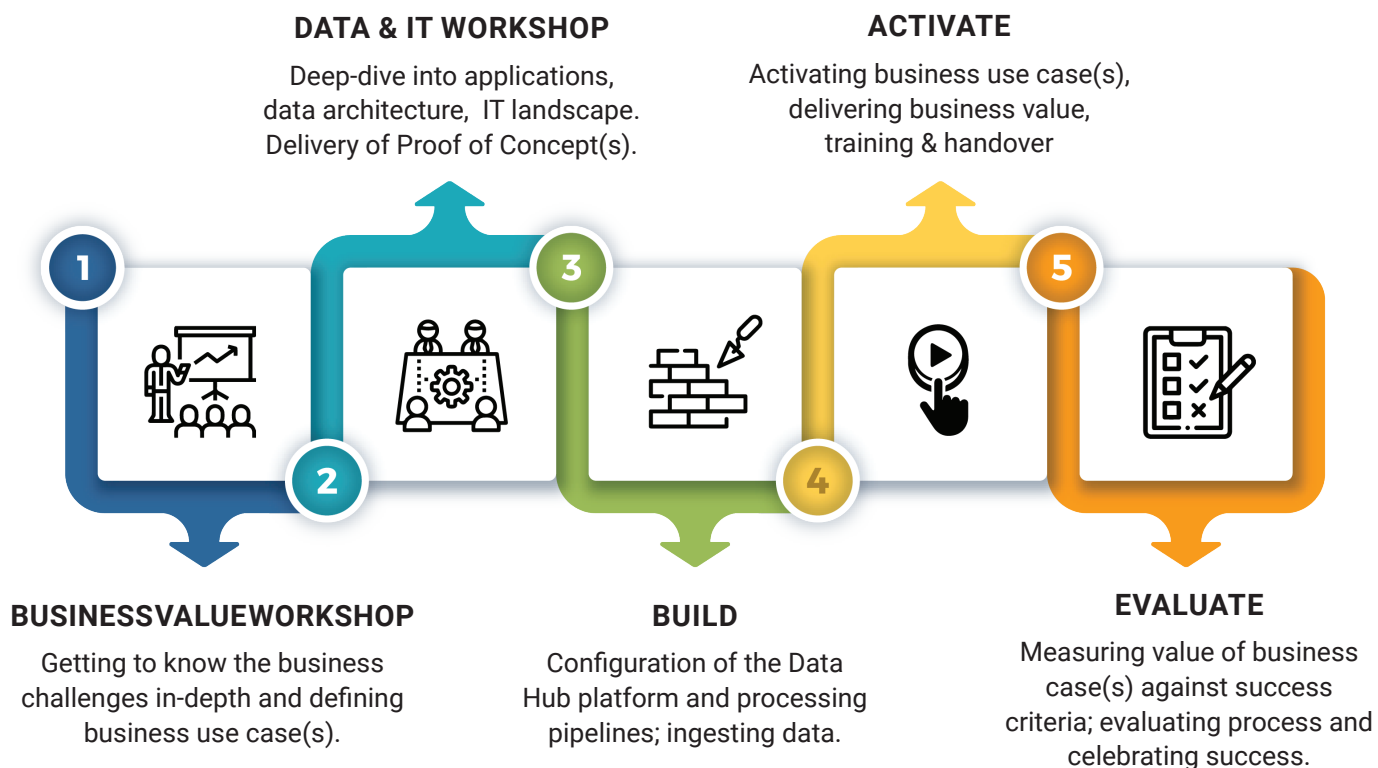
Proven track record with clients

With our proven track record to activate data, we know how to create success in the shortest possible time. From the very first meeting until the go-live we demonstrate what value we add by activating your data.



WHY ANCHORMEN?

How we accelerate your data project and strategy



What is included in the Data Hub

The architecture of the Data Hub is based on best practices to ensure a cost-effective, secure, scalable and manageable infrastructure. Every Data Hub we build for our clients, is customized to their needs and requirements, it is their unique data platform to access and activate business data and information. The Data Hub is based in the public cloud and architected to meet the demanding needs to store, process, analyze, govern, and present data analytics and insights. It is secure, built to scale and cost-effective. Here are some of the standard features and functionality that you can expect:

- ✓ Scalable (blob) storage with lifecycle management
- ✓ Scalable data processing for all kinds of data
- ✓ Support for Scala, Python, R and SQL
- ✓ Drag and drop development of data pipelines, file conversion and scheme validation
- ✓ Connectors for most common databases, services and file systems
- ✓ Data pipeline monitoring
- ✓ Support for dataset versioning
- ✓ Multi-tenant Data Hub options
- ✓ Consultancy to identify and prioritize business use cases
- ✓ Training of team members and hand-over to IT department and other teams

Get in touch!

info@anchormen.nl Amsterdam: +31 (0) 20 773 1972

www.anchormen.nl Groningen: +31 (0) 50 311 5222

Anchormen is a **Quint** Group company.

