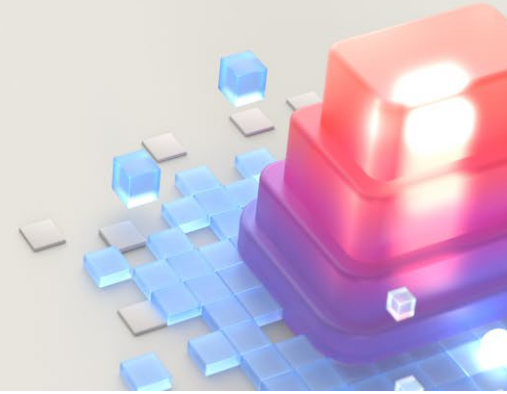


Exploring Azure OpenAI Service access options



To complete the experiential labs for many Microsoft Enterprise Skills Initiative (ESI) courses, learners must have access to an Azure subscription that has been onboarded/authorized to use Azure OpenAI Service. This document covers the process to request access to Azure OpenAI, explores multiple subscription options, and details highlights of the request form.

Request process

To access Azure OpenAI, go to the [Azure OpenAI Service access request form](#) and provide your Azure Subscription ID, company information, requested large language models, use case, contact information, and other details. Since it can take up to 10 business days for approval, ESI recommends that you submit your request *at least four business days before your class start date*. For access request process highlights and tips, go to the [Request Azure OpenAI Service access](#) section of this document.

Subscription options

[An existing enterprise nonproduction \[test\] subscription which *has been onboarded/enabled* for Azure OpenAI](#)

In this option, all associated registered learners have access to the subscription with the CONTRIBUTOR role. No additional onboarding request is necessary. NOTE: As a shared subscription, quota and throttling limits may affect the learner experience or existing service users within the subscription. Some lab actions may already be completed.

[An existing enterprise nonproduction \[test\] subscription which *has not been onboarded/enabled* for Azure OpenAI](#)

In this option, a designate of the organization can submit the Azure OpenAI Service access request form and provide the **Subscription ID** value. All associated registered learners will be required to have access to the subscription with the CONTRIBUTOR role. For a single onboarding request, up to three subscriptions can be submitted. NOTE: As a shared

subscription, quota and throttling limits may affect the learner experience (mitigated with up to three subscriptions).

Each attending learner has their own Microsoft Developer Network (MSDN) benefit Azure subscription

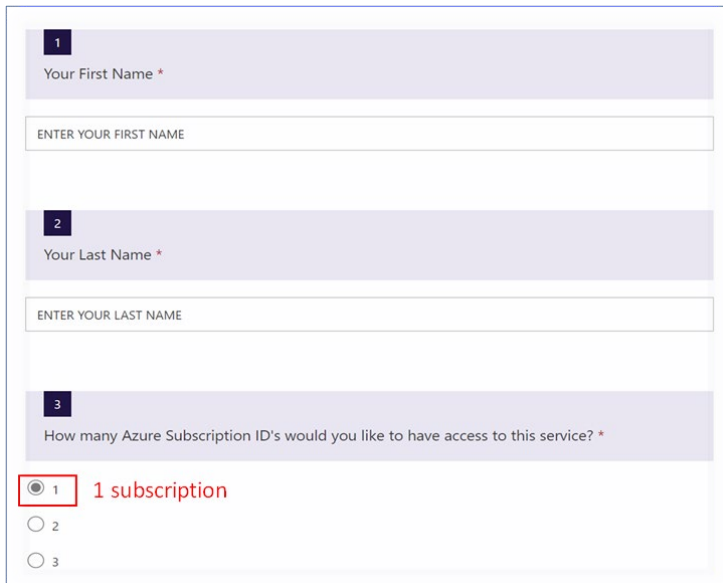
In this option, the learner is an owner of the MSDN benefit Azure subscription instance. They must request access, if they haven't already done so, by submitting the Azure OpenAI Service access request form (including their individual **Subscription ID** value). There is no quota/throttling issue in this option, and learners can further experiment/ideate. NOTE: Not all organizations have an MSDN subscription; these are often for developer roles only.

Each attending learner has or provisions their own personal free-tier Azure subscription

In this option, a learner has or provisions their own free-tier Azure subscription. For details about free accounts, learners can go to [Azure OpenAI Service – Advanced Language Models](#) and [Create Your Azure Free Account Today](#), where they can find out about the personal learner sandbox environment, a \$200 Azure credit, and access to 12 months of specific free services. NOTE: This option requires a credit or debit card during sign-up (for identity verification), and the learner must not have previously requested a free Azure account.

Request Azure OpenAI Service access

The following highlights and tips can help learners fill out and submit the [Azure OpenAI Service access request form](#).



1
Your First Name *

ENTER YOUR FIRST NAME

2
Your Last Name *

ENTER YOUR LAST NAME

3
How many Azure Subscription ID's would you like to have access to this service? *

1 1 subscription


2


3

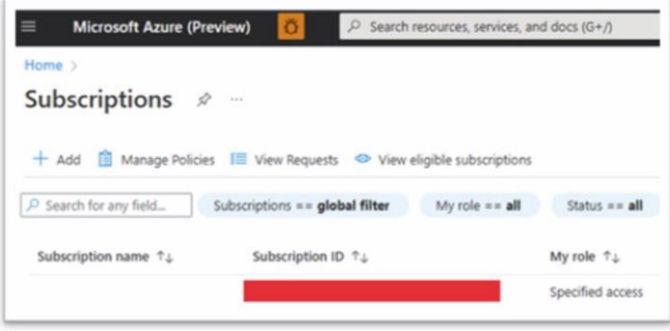
4

Please provide your 1st Azure Subscription ID (not your Tenant ID)
Subscription must belong to your organization. If you do not enter a valid Subscription ID, your application will be DENIED. Don't know your Azure Subscription ID? See article for help: <https://aka.ms/get-subscription-id> *

Azure services

 Create a resource

 Subscriptions




Enter your answer

5

Your Company Email Address - Applications submitted with a personal email address (e.g. gmail.com, hotmail.com, outlook.com etc.) will be DENIED. *

Expect verification email from Microsoft Vetting Services - be sure to check your spam/junk folder

Enter a valid email address. 

6

Your Company Name *

What organization do you represent?

Enter your answer

7

Company Street Address *

Enter your answer

8

Company City *

Enter your answer

Very important: Use your work email address, and add your company details, including name, street address, and city.

14

Is your organization an ISV, SI, or MSP? *

- Independent Service Provider (ISV)
- Systems Integrator (SI)
- Microsoft Solutions Provider (MSP)
- Microsoft Employee (Internal)
- Microsoft Most Valuable Professional (MVP)
- Other

Select **Other**.

18

If you have a contact at Microsoft, please provide their full name.

Optional

Enter your answer

19

If you have a contact at Microsoft, please provide their email address.

Optional

Enter a valid email address.

21

Which region(s) will you require? *

Select all that apply. Azure OpenAI service is limited to these two regions at present.

- South Central US
- West Europe
- East US

Select all regions.

22

Which Azure OpenAI service feature(s) are you requesting access for? *

Select all that apply

- Text and code models** (Conversational AI, Search, Summarization, Writing Assistance or content generation, Code-based scenarios, Reason over Structured and Unstructured data)
- DALL-E 2 models** (text to image)

Select both options.

DALL-E 2: Select your use case(s) *

By selecting a use case, you are confirming that you are not using AOAI DALL-E 2 APIs for any other use cases. **As provided in the Product Terms for Azure OpenAI (a Limited Access Cognitive Service), your use cases must match what you select on this form. You may not use DALL-E (whether in a prototype or in production) for any use case not listed here.** If you have a use case that is not listed, **please do not complete this form.**

Please fill out our [feedback form](#) to let us know about use cases you would like us to consider for the future.

Some use cases below are limited to certain users. Users are defined as those who directly send inputs to an application and receive a response. Additional stakeholders may see content output by the system (after human review if relevant), but they are not considered a user unless they directly interact with an application.

Internal users refer to users with verified employee credentials.

Authenticated external users refer to users who are linked to a verified identity such as a government ID or Azure Active Directory, email, or other verified user identity.

*(Required)

- Accessibility Features:** For use to generate imagery for visual description systems. [Limited to internal users and authenticated external users.](#)
- Art and Design:** For use to generate imagery for artistic purposes only for designs, artistic inspiration, mood boards, or design layouts. [Limited to internal and authenticated external users.](#)
- Communication:** For use to create imagery for business-related communication, documentation, essays, bulletins, blog posts, social media, or memos. This use case may not be selected to generate images for political campaigns or journalistic content (for journalistic use, see the Journalistic content use case below). [Limited to internal and authenticated external users.](#)
- Education:** For use to create imagery for enhanced or interactive learning materials, either for use in educational institutions or for professional training. [Limited to internal users and authenticated external users.](#)
- Entertainment:** For use to create imagery to enhance entertainment content such as video games, movies, TV, videos, recorded music, podcasts, audio books, or augmented or virtual reality. This use case may not be selected to generate images for political campaigns or journalistic content (for journalistic use, see the below Journalistic content use case). [Limited to internal and authenticated external users.](#)
- Journalistic content:** For use to create imagery to enhance journalistic content. May not be used to generate images for political campaigns. [Limited to internal users.](#)
- Marketing:** For use to create marketing materials for product or service media, product introductions, business promotion, or advertisements. May not be used to create personalized or targeted advertisements to individuals. This use case may not be selected to generate images for political campaigns or journalistic content (for journalistic use, see the above Journalistic content use case). [Limited to internal and authenticated external users.](#)

Most Valuable Professional (MVP) or Regional Director (RD) Demo Use:

For this demo, select **Communication, Education, and Marketing.**

Text and code: Select your use case(s) *

Please select a use case that describes how you will use Azure OpenAI Service Text and/or Code capabilities in your application. By selecting these use cases, you are confirming that you are not using Azure OpenAI Service for any other use cases. **As provided in the Product Terms for Azure OpenAI (a Limited Access Cognitive Service), your use cases must match what you select on this form. You may not use Azure OpenAI Service Text and/or Code capabilities (whether in a prototype or in production) for any use case not listed here.** If you have a use case that is not listed, **please do not complete this form.**

Please fill out our [feedback form](#) to let us know about use cases you would like us to consider for the future.

The use cases below are limited to certain users. Users are defined as those who directly send inputs to the application and receive a response. Additional stakeholders may see content output by the system (after human review if relevant), but they are not considered a user unless they directly interact with the application.

[Internal users](#) refers to users with verified employee credentials.

[Authenticated external users](#) refers to users who are linked to a verified identity such as government ID, Azure Active Directory, email, or other verified user identity.

[Unauthenticated external users](#) refers to users who are not required to have a verified identity.

- Chat and conversation interaction:** Users can interact with a conversational agent that responds with responses drawn from trusted documents such as internal company documentation or tech support documentation; conversations must be limited to answering scoped questions. [Available to internal, authenticated external users, and unauthenticated external users.](#)
- Chat and conversation creation:** Users can create a conversational agent that responds with responses drawn from trusted documents such as internal company documentation or tech support documentation; conversations must be limited to answering scoped questions. [Limited to internal users only.](#)
- Code generation or transformation scenarios:** For example, converting one programming language to another, generating docstrings for functions, converting natural language to SQL. [Limited to internal and authenticated external users.](#)
- Journalistic content:** For use to create new journalistic content or to rewrite journalistic content submitted by the user as a writing aid for pre-defined topics. Users cannot use the application as a general content creation tool for all topics. May not be used to generate content for political campaigns. [Limited to internal users.](#)

Most Valuable Professional (MVP) or Regional Director (RD) Demo Use:

Any applicant who is not in the Microsoft Most Valuable Professional (MVP) Award Program and in the MVP database, or in the Regional Director (RD) Program, will be **denied** if this use case is selected. For use by a current participant in the MVP or RD Program (the name entered in Questions 1-2 must be the name of the MVP or RD participant) solely to develop, test, and demonstrate one or more sample applications showcasing the Azure OpenAI Service Text and/or Code capability (in accordance with a use case listed in this Question [X]). No production use, sale, or other

For this demo, select the first three options.

28

(Optional) We are always working on improving our offerings. Please take this quick survey to tell us about your needs to create a successful Azure OpenAI Service: [AOAI \(qualtrics.com\)](https://qualtrics.com)

Never give out your password. [Report abuse](#)

Make sure you have answered all the questions, and then select **Submit**.