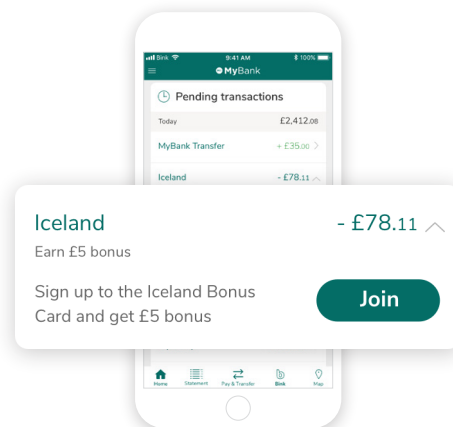


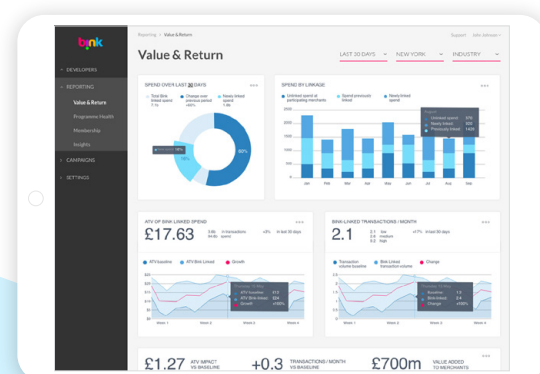
Bink establishes your brand and app as a central point for customers to view and interact with all their loyalty programmes, driving engagement and delivering valuable customer insights.

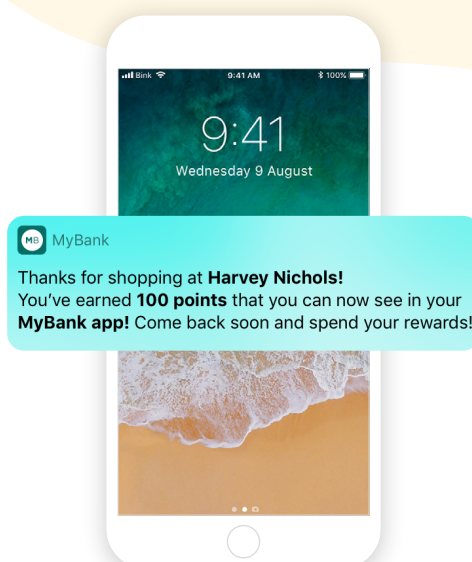


Reach customers on the go.

Bink aligns to your digitalization strategy by allowing you to engage with customers wherever they go, through their mobile.

Through data analytics and customised dashboards, you can analyse your customers' shopping behaviours, enabling you to create more relevant, targeted communications and achieve more effective cross-selling.





Payment and form-factor agnostic.

Bink supports Chip and PIN (EMV), contactless and wearable payment methods.

Displacement of cash

The sheer ease and convenience of the Payment Linked Loyalty transaction experience encourages the use of cards over cash.



Secure and data compliant.

Bink's robust platform is constructed to support millions of users. PCI and European General Data Protection Regulation (GDPR) compliant, it is designed to provide the highest levels of data security for the protection of first-party data and personally identifiable information.

Supports innovation, provides differentiation.

Bink allows you to engage with customers in a way that is personalised, easy, intuitive, immediate and helpful – in-line with what they expect from their favourite brands today.



Seamless integration.

Bink's technical experts will work with you to identify, plan and implement seamless integration with your existing app or wallet, and we can provide you with an API suite, comprehensive technical support and direct access to our developers to facilitate integration.

Partner with Bink today to drive deeper customer engagement.

For more information, contact us at:

sales@bink.com