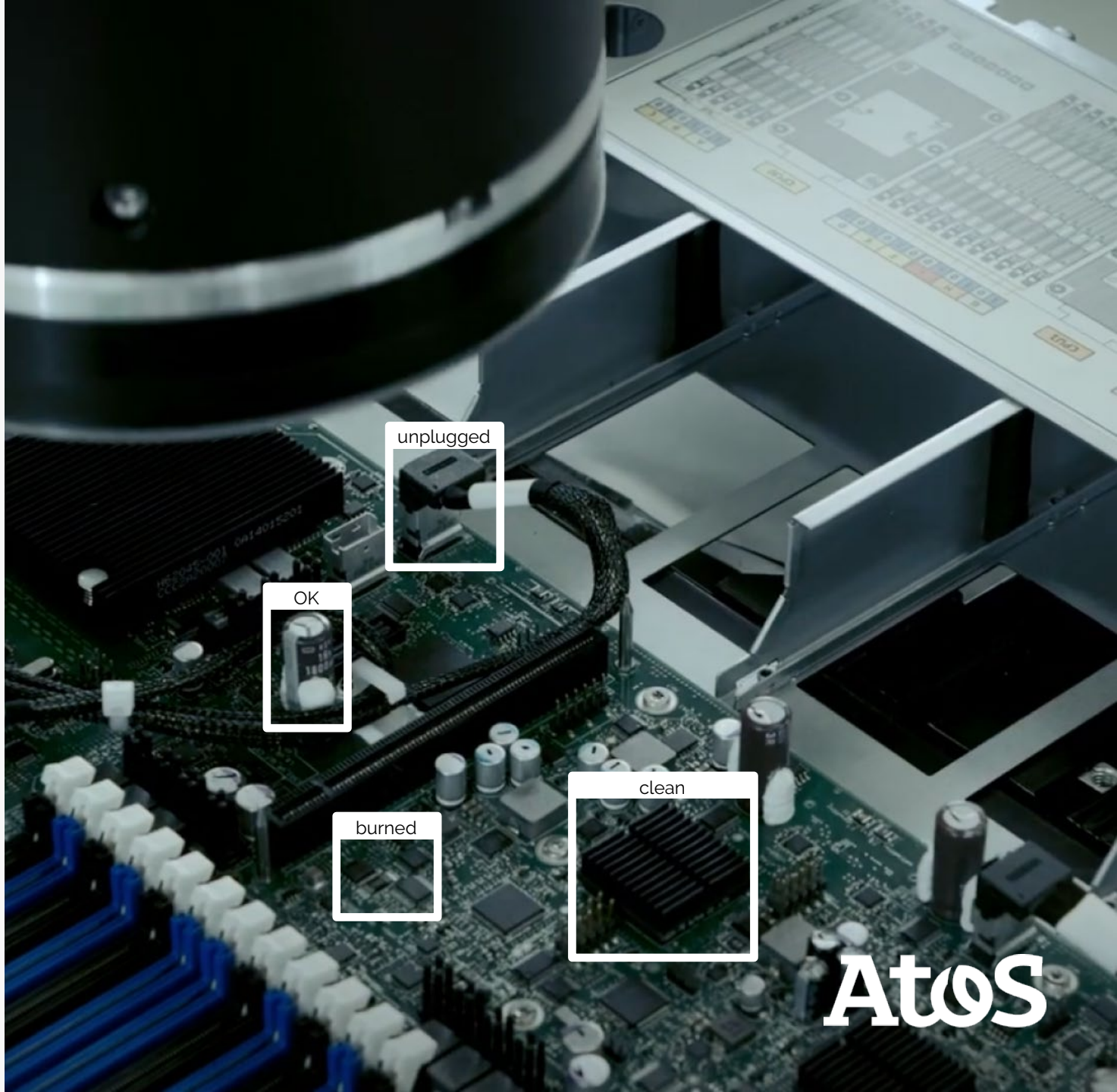




**DataSentic**  
an atos company

# Quality Inspector



**Atos**

# Atos Vertical AI Solutions

Powered by DataSentics, Atos's global AI center of excellence

## Atos

112,000+ business technologists in 71 countries worldwide

## Atos data

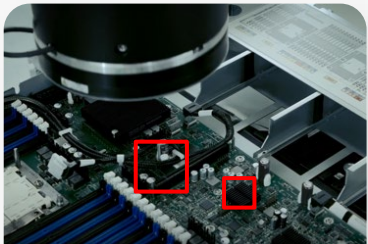
5,000+ global data experts within Atos



## VAIS

150+ data scientists and data engineers in DataSentics CoE

## Vertical AI Solutions (VAIS)



### Manufacturing

Factory 360

QUALITY INSPECTOR

Energy optimization

Safe factory



### FS&I

Persona<sup>360</sup>

Personalization

### DAISI

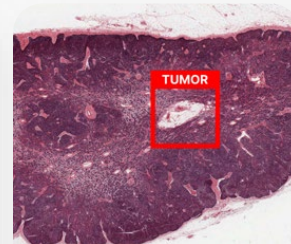
Document AI



### Retail/CPG

SHEEP INSPECTOR

Digital shopping experience 360



### Health

Computer vision in health

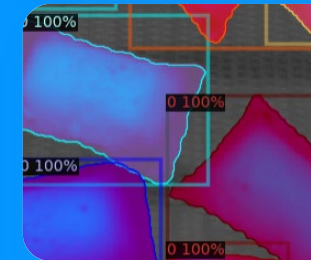
Health 360

## Horizontal data and AI



### ODAP

Data Lakehouse and ML Ops using Databricks; *Leading Databricks partner in Europe*



### Computer Vision labs

Deep learning/NLP



### Data and AI product development

Technology partners



# Atos

# As customer expectations rise, qualified personnel is hard to find

Quality inspection is a vital part of the production process. It's also manual labor intensive, time-consuming and prone to human error. It is challenging to find qualified controllers while keeping the costs of quality control manageable.



**Automation and process adaptation are the answer**



## Quality control solution challenges



**Every quality control situation is different**

- You often need to handle difficult conditions
- Black-box solutions are inflexible
- Most solutions are incompatible with advanced/special hardware (thermal cameras, etc.)



**Growing quality requirements**

- Pressure on costs
- Increasing customer expectations



**Many providers are unable to scale-up the solution**

- Qualified IT / AI employees are difficult to hire
- Solutions must run smoothly in production and be scalable

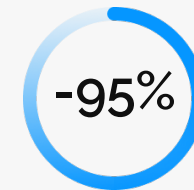
# Quality Inspector – Ready to handle almost any challenge you give it

## Product overview

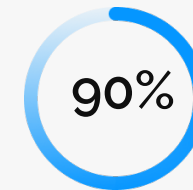
- Quality Inspector includes **out-of-the-box** models for **visual quality inspection** use cases – which we **tailor** to your specific needs.
- Provides **stable** quality control that is **easy to scale** and improve over time.
- Enables us to tailor models for you **very quickly** with **high performance and high precision**.
- Quality Inspector is an **end-to-end solution** that can also be easily **integrated** with an existing solution .



## Benefits measured by our clients:



Exported  
non-conformities



Quality inspection  
time reduction



Detection  
accuracy

# Quality inspection use cases for industries

Our solution enables the digitalization of the following inspection cases

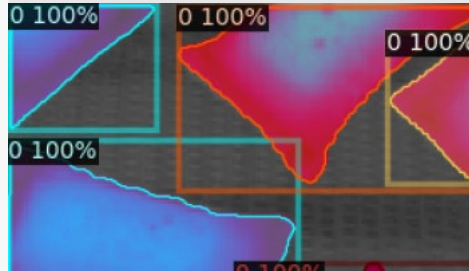
## Aerospace manufacturing

Fastener, floating bolt and screws control; Step & Gap; Sealant control; Impacts and dirt detection; Assembly inspection



## Construction material

Surface defects detection; Incoming inspection; Thermal inspection; Cosmetic controls



## Defense

Welding controls; Assembly compliance; Navigation support by AR; Surface defects detection



## Auto manufacturing

Assembly controls; Parts conformity; Dimensional and structural analysis; Cosmetic controls; Welding controls



## Ceramics

Surface defects; Scratch and impacts detection; Color changes; Glazing analysis



## PCB/Hardware

Assembly compliance; Foreign object and damage detection during hardware manufacturing



## Die casting

Surface defects; Cosmetic controls; X-ray testing of castings; Digital twin comparison; Damage detection



## Transport

Bearing quality control; Scratch and impacts detection; Color changes; Identification of electrical current area; Engraving reading



## Food & beverage

Cleanliness of production means; Raw material controls; Cosmetic controls; Packaging compliance



## Pharmaceuticals

Material integrity; Packaging compliance; Mixed medicine sorting; Cosmetic controls



# Our product solves quality inspection end-to-end...

## Hardware



### Cameras

Various capturing devices: mobile devices, industrial cameras, custom

**TPSH** **SICK** **Baumer** **BASLER**



### Edge server / MEC

Various sizes of BullSequana Edge devices for fast, on-site inference

**Atos** **ADVANTECH** **NOKIA**



### PLC / robotics connection

Connect to your production line and take actions based on quality control

**Schneider Electric** **E.T.N** **B&R** **SIEMENS**



# ...ensuring that Quality Inspector will work for you



## Software



### High performance

Utilize optimized, best-in-class models to achieve the highest performance possible



### Accessibility everywhere

Access from the edge, cloud, mobile or custom devices; online, offline or in hybrid mode

**Azure** **aws** **Google Cloud** **databricks** **NOKIA**



### Fully customizable

Pre-built product platform for quick and easy product customization to your needs

Available wired, or wireless connectivity, including

**5G**

**NOKIA** **verizon**



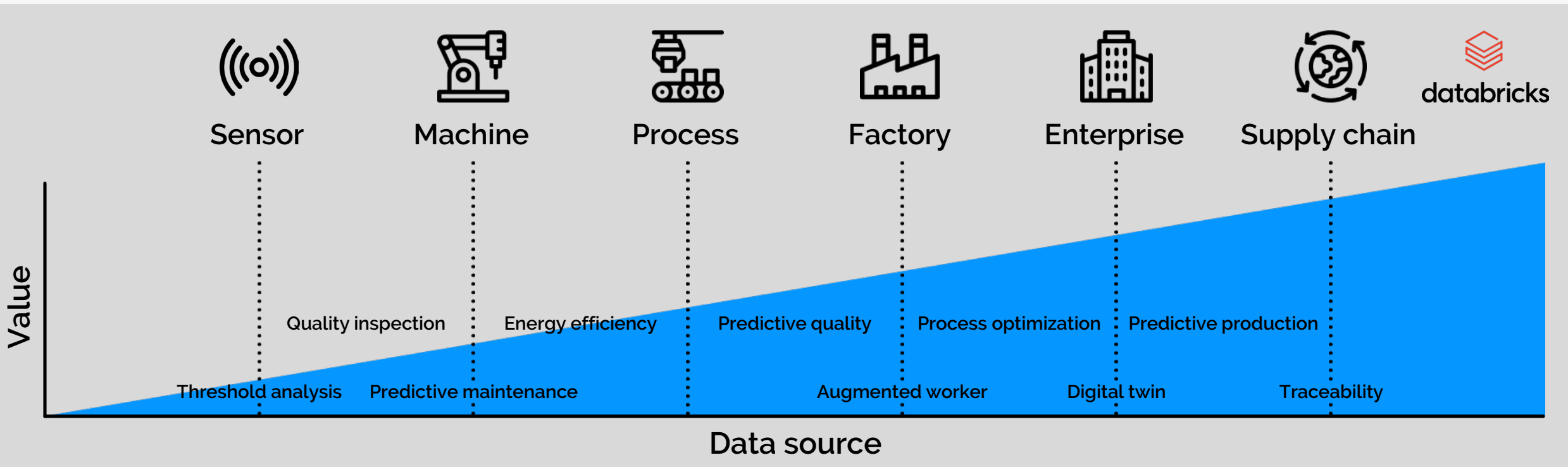
**Atos**

# Quality Inspector is part of a larger ecosystem

Leverage all your data on a unified platform tailored for manufacturing data solutions



Our individual solutions are part of the **Factory360** ecosystem built on top of **Databricks**. By leveraging standardized, state-of-the-art data models for cloud and edge, we can quickly move your desired solution from PoC to a running production.



Business pain: Manufacturing companies already generate huge volumes of data, but little is captured and used at scale to create value for the company.





## Major aerospace manufacturer

Automated quality inspection previously done manually by trained technicians with special measuring tools. Inspection time reduced by more than 90% — from several hours to just a few minutes. Outstanding AI solution accuracy of 99.97%.



## Success stories

### One of the largest naval defense manufacturers

Quality control on welds during sea vessel construction by installed Quality Inspector app on ruggedized industrial tablets in a 100% offline environment. This common quality assurance process solution is deployable to any other industry.

### Atos factory in France for building the BullSequana Edge

Utilizing Quality Inspector in real production for visual inspection in assembly compliance.



**Yann Simoné**  
Quality Manager  
Atos Factory, France

#### Outcomes

*"With Quality Inspector we are looking for full automation and drastic speed up of the quality inspection process in our assembly production line with phenomenal accuracy."*





# How to start

# Customizing Quality Inspector for your business

## Implementation phase

Implementation is charged by a man-day rate

### Quick capacity demo

Quickly discover if computer vision is applicable to your products and your use case. Learn about the types of controls that can be automated and get insight into the industrial feasibility of automated controls.

### Pilot

Customize Quality Inspector to your specific needs, tools, robots or industrial systems. For the first time, the product is fully implemented at your site to validate all operational requirements and deliver business value.

### Roll-out

Once the pilot case is successfully deployed with field return on experience, the final step is to scale the solution within the different production sites to implement automatic quality controls.

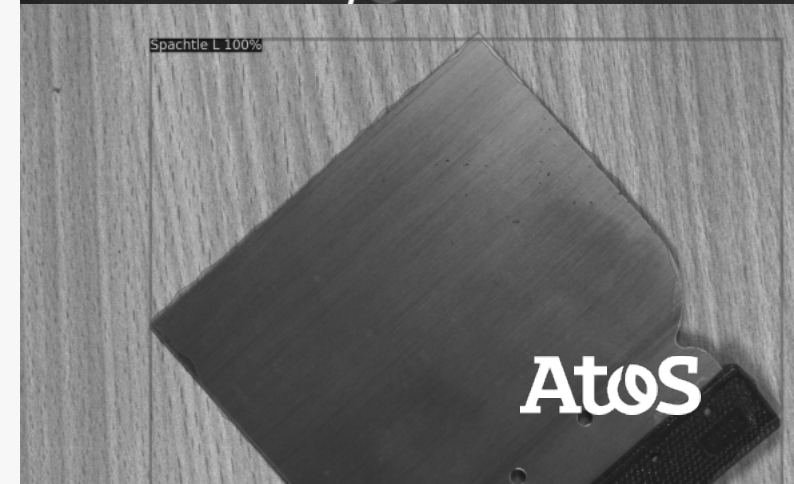
## Run phase

Product usage is charged by a fixed license fee

**Ensure the operation of the solution and its overall basic service.**

### Continuous improvement

- Additional development, scaling-up, and modifications of the solution
- Consultations and knowledge sharing for your internal team
- Helps you meet your data and AI goals with professional services and support from our experienced team



# Quick capacity demo

Find out if you can automate your quality control

Every quality control situation has its own challenges - we want to ensure we can solve yours.

## Data

### Your data



Provide us with ~50 pictures for each type of defect (pictures can even be taken by your phone)

### Labelled data



Teach us which defects are which



## Results

### Feasibility

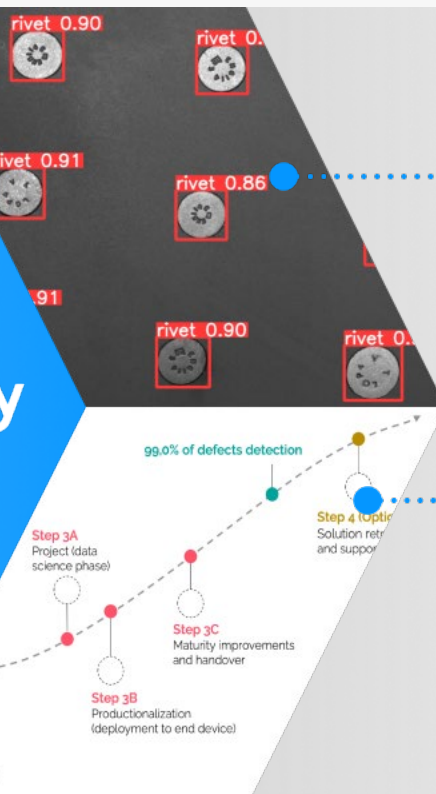


In 2 weeks, we get back to you with the first results, feasibility study and next steps

### Future roadmap



"You see the potential of our solution and we validate that we can solve it."



# YOUR KEY CONTACTS

Let's discuss how we can help your business

Every conversation, business interaction and success story begins with people.

Feel free to reach out to me for a 30-minute introductory meeting to discuss your business requirements and challenges around AI-related topics.

[Contact us](#)



**Vaclav Maixner**

Manufacturing AI Solution  
Use Case Lead

---

[vaclav.maixner@datasentics.com](mailto:vaclav.maixner@datasentics.com)



**Lukas Tryner**

Computer Vision Architect &  
Quality Inspector Technical Leader

---

[lukas.tryner@datasentics.com](mailto:lukas.tryner@datasentics.com)

**Atos**