



Background

The Parallel Works platform enables **Push-button** creation of private HPC cloud clusters. The platform provides a **Uniform UX** between cloud and on-prem resources, a workflow solution library to **facilitate collaboration**, and a **library of applications** ready to deploy on cloud. Parallel Works is also **used by other ISVs** such as GT Suite to power their cloud solutions.

Parallel Works has **proven success** with large, **research-driven government organizations** (NOAA, EPIC)

Parallel Works is working towards **FedRAMP Moderate and DoD Impact Level 5 certification**.

Target Client Base

Mid-market & enterprise organizations:

- Aerospace and Defense
- Automotive
- Biomedical
- Earth / Weather
- Industrial Machinery and Heavy Equipment

Geography supported

- NAMER
- EMEA (EU only)

What are Parallel Works' competitive differentiators?

- **Ease of use:** Limited prerequisite expertise in HPC or cloud technology needed
- **Maximize Cost/Performance:** Seamlessly use existing on-prem and cloud resources
- **Support:** End-to-end expert technical support
- **Scalability:** Enables scaling up and out with access to the latest cloud HPC resources
- **Predictable budgeting:** Simplifies operational costs with a single price per year
- **Cost control:** Near real-time cost-control features to ease cloud spend concerns
- **Machine Learning:** Award-winning ML features for simulation design
- **Security:** FedRAMP Moderate and DoD Impact Level 5 certification work is in progress

What value does Parallel Work bring to customers?

- **Deliver results faster:** Speed studies 10 to 10000x
- **Cloud independence:** Supports all major cloud service providers (CSP's) and provides ability to scale quickly across resources and test new technologies
- **No coding needed:** Allows users to focus on their work, not learning a new language
- **New markets and opportunities:** Government (NOAA, EPIC, DoD HPCMP), Biomedical, Weather
- **Credibility:** PhD-level expertise across multiple domains

Customer reference

<p>On cloud</p>	 <p>Read Success Story</p>
<p>On-prem/future cloud transition</p>	
<p>On-prem</p>	

How do I learn more?

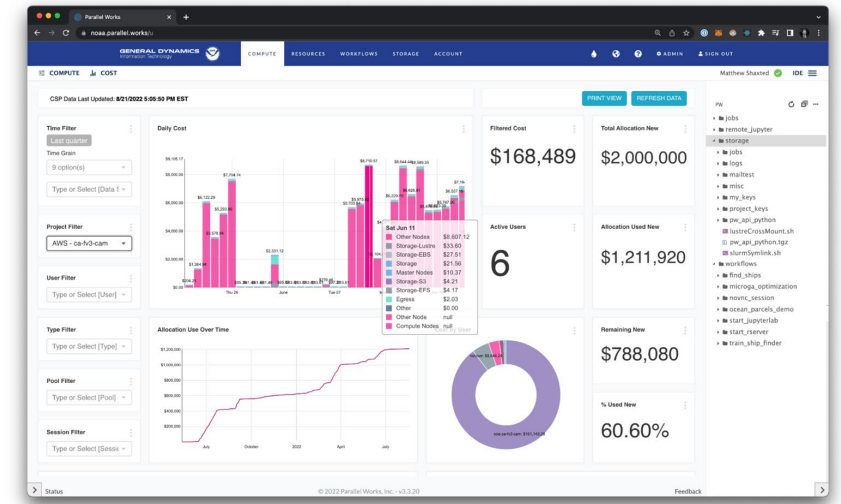
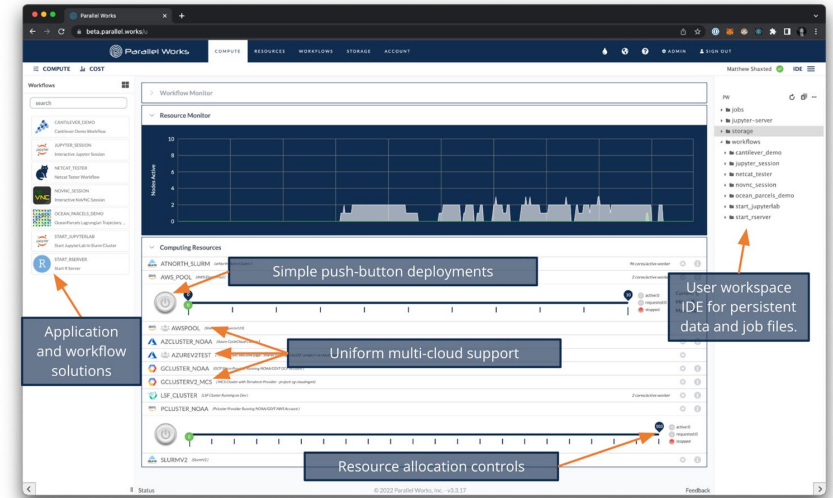
- <https://www.parallelworks.com>

How do I get started?

- Contact DCE, Phyllis Rhodes prhodes@parallelworks.com

Key Benefits of Parallel Works

- **Multi-cloud uniform** cluster support with proven performance and scalability
- **Simple push button** interface for users and powerful API for automation
- **Hybrid workload** bursting from on-premise to cloud
- **Cost monitoring** and management in near-real-time
- **Workflow orchestration** tools and workflow solution library to facilitate collaboration



Parallel Works: Uniform HPC Interface

A single-pane-of-glass control plane for managing HPC resources across clouds and supercomputers

