



DynaTech's Dual-write Solution
for the Manufacturing Industry

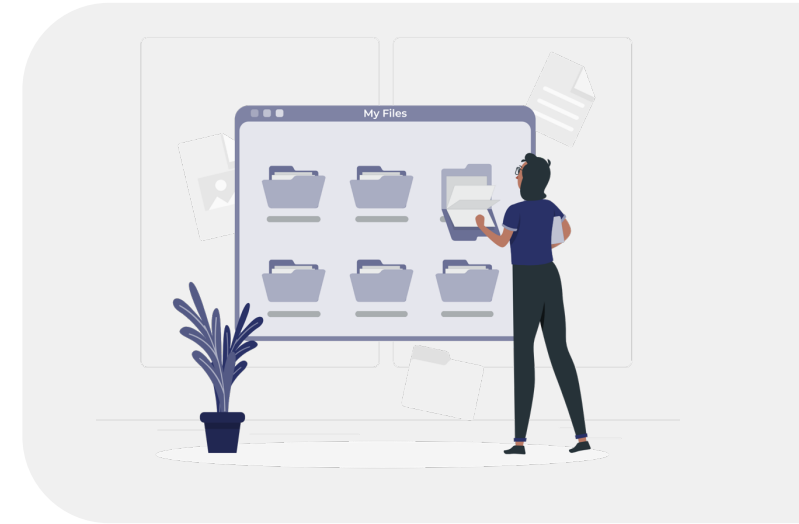


Integrating Microsoft Dynamics 365 CRM To F&O

Challenges

In the Manufacturing industry, seamless integration between different business applications is vital for efficient operations. However, many companies face challenges with data inconsistencies, delays, and manual errors when trying to synchronize data across Microsoft Dynamics 365 CRM and F&O.

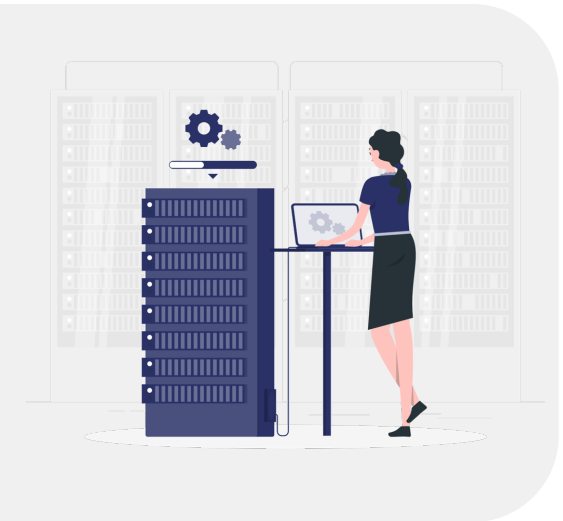
This creates bottlenecks and hampers decision-making processes - making it critical for businesses to adopt a robust solution like Dual-write.

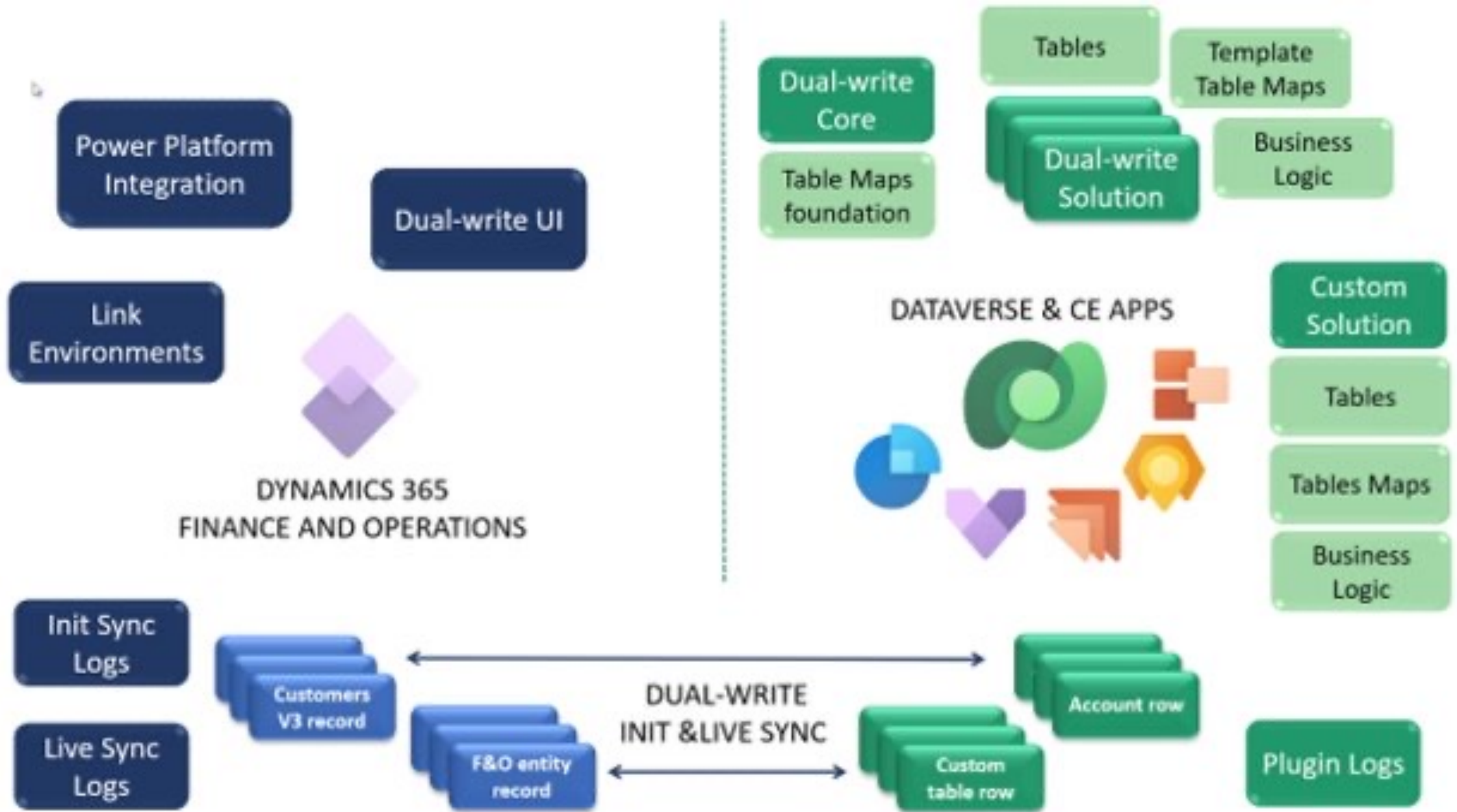


What do we offer?

DynaTech System offers Dual-write for Microsoft Dynamics 365 CRM and F&O - a robust solution that enables real-time, bi-directional data synchronization between these applications.

With Dual-write, manufacturers can streamline processes, improve data accuracy, and achieve better collaboration across departments.





Features & Benefits

Real-time Data Sync

Instantly synchronize data changes between CRM and F&O to maintain data integrity.

Automated Workflows

Reduce manual efforts and errors with automated workflows for seamless data transfer.

Custom Mapping

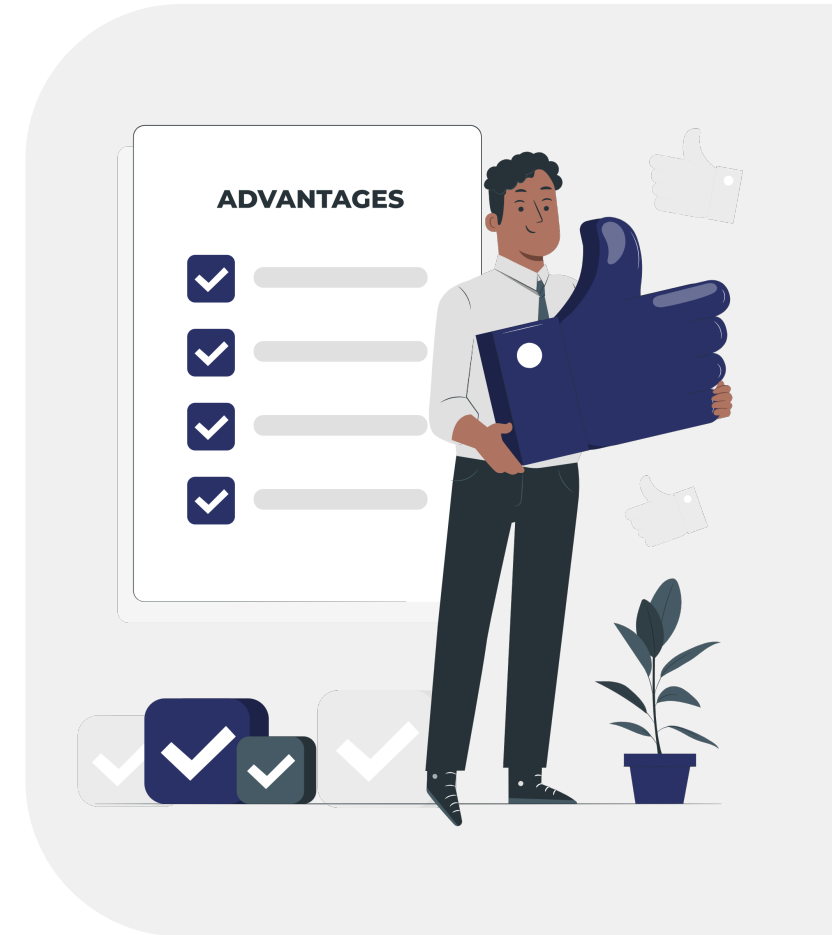
Tailor data mapping according to unique business requirements for precise integration.

Error Monitoring and Handling

Identify and address data discrepancies with comprehensive error monitoring and handling capabilities.

Bi-directional Relationship

Ensure consistency by maintaining bi-directional relationships between interconnected entities



Why Choose DynaTech?

DynaTech, a reputable Microsoft Gold Partner, specializes in seamless Dual-write implementation for Microsoft Dynamics 365 CRM and F&O in the Manufacturing industry.

With years of experience, a skilled team, end-to-end support, and a track record of successful deployments – we ensure a seamless and tailored solution that maximizes operational efficiency and customer satisfaction.

Contact us at dynatechsupport@gmail.com or call us at XXXXXXXX to get started.

