



Seatti

Manage Shared Desks & Connect Hybrid Remote Teams.

82% of companies will transition to hybrid work and shared desks.

Problem: More complex office management, Less personal interactions.

Solution: Seatti.





What We Do

Software to manage flex offices and hybrid teams. Fully integrated in MS-Teams.



FlexOffice Management

Enable workspace reservations in the office & beyond to facilitate daily planning

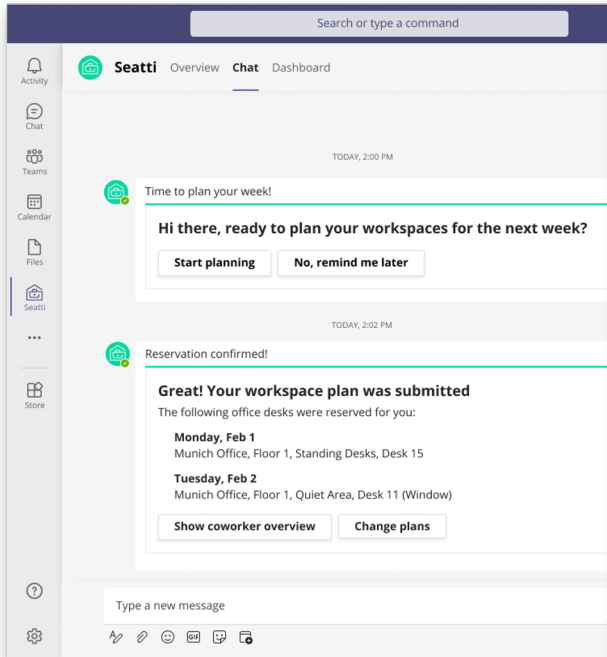


Share Location, Meetup and Collab

Facilitate personal meetups, collaboration and socializing in hybrid-remote teams



Reserve a Workplace



Plan your week's workspaces

Share your workspace plans so your coworkers can join you and get the best recommendations to meet colleagues nearby

Monday

Workspace: Home Office Location: Munich, Altstadt

Tuesday

Workspace: Office Munich (87/420 seats left) Floor: Floor 1

Area: Quiet Area (5/7 seats left)

Desk: Select Desk

- 1 Window
- 2 Window
- 3 Window
- 4 Moritz Hartmann
- 5 Window
- 6 Johannes Eppler
- 7 Window

Do you want to hide your plans from your colleagues?

Share location

- Enable employees to reserve FlexDesks within MS-Teams.
- Choose between desks in various areas and see live availability.
- See where exactly your desk is and who is sitting next to you.
- Also choose from workspaces outside the office.



See Who is Where & Meet Up

The screenshot shows the Seatti application interface. At the top, there is a search bar with the text "Search or type a command". Below it, the "Overview" tab is active, displaying a table of workspace plans. The table has columns for "Name", "Workspace", and "Location". A filter dropdown is open over the "Location" column, showing options like "Near Me", "Berlin", "Bielefeld", "Cologne", "Hamburg", and "Munich", with "Munich" selected. A "Search team members" dialog is also open, showing "Senior Analyst" and "Senior Researcher".

Select Day	Name	Workspace	Location	Role
Monday	Moritz Hartmann	Home Office	Munich, Schwabing	
Tuesday	Johannes Eppler	Office	Munich Altstadt	
Wednesday	Chris Bieri	External Workspace	Munich Altstadt	
Thursday	John Doe	Other - Working from train to Munich	Munich	Senior Analyst
Friday	Jane Doe	Home Office	Munich, Altstadt	Senior Researcher

The "Join Chris" dialog box is open, showing the following content:

Join Chris
Meet up and collaborate

Ask Chris if you can join him
on Monday, Dec 14th in Munich, Altstadt

What do you want to meet for?

- Collaboration (adds his workspace to your plan)
- Lunch
- Coffee
- Bee | _____

Add a Message

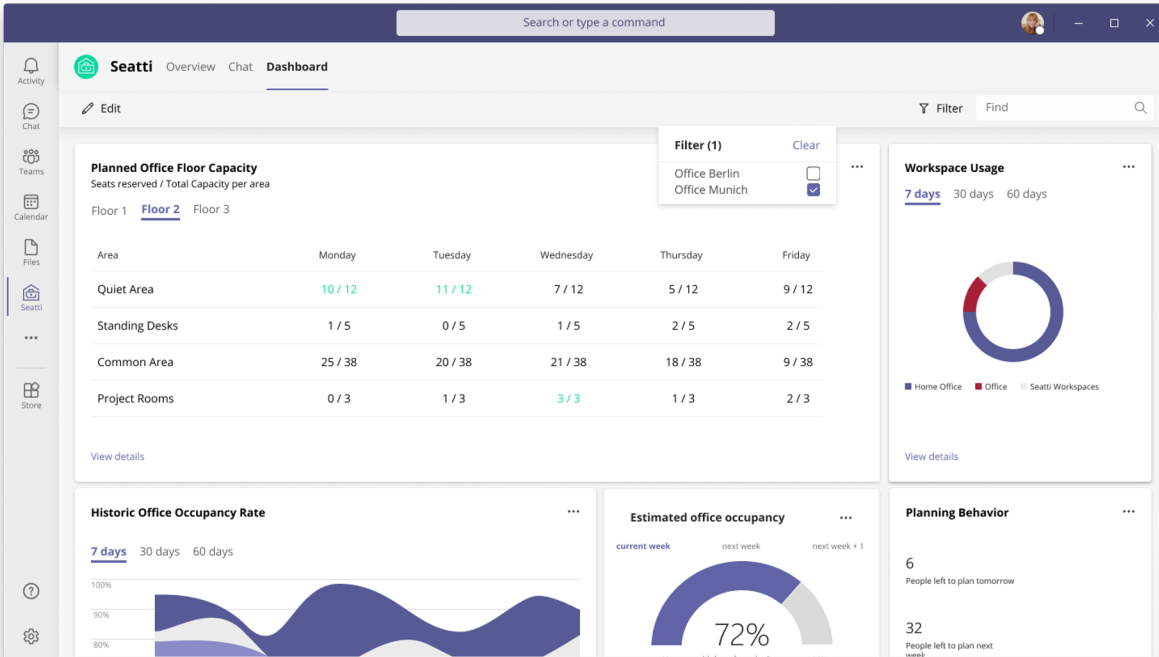
Hi Chris, I saw you are working in Munich, Altstadt today. Let's meet up for lunch!

Save

- Share your daily workspace location with the team.
- See who else is planning to come to the office.
- See who is working remotely from within your radius.
- Request to join colleagues or invite them to join you.
- Meetup and collaborate in person, no matter where.



Manage Offices



- Plan daily usage and occupancy of all offices within MS-Teams.
- Algorithmically optimize office occupancy across weekdays.
- Recommend employees to come to the office on selected days.
- Analyse occupancy data for your long-term office strategy.



Integrate in MS-Teams

Name	Workspace	Location	Role
Me	Office	Munich F1 Quiet 16	Full-Stack Developer
Moritz Hartmann	Office	Munich F1 Mac 4	Developer
Johannes Eppler	Office	Munich F1 Quiet 12	Product Manager
Jane Doe	Home Office	Munich, Altstadt	Senior Researcher
Moritz Pagel	Seatti Workspace	Munich, 25hours Hotel	Project Lead
John Doe	Other - Working from train to Munich	Munich	Senior Analyst
Daniel Narajek	Office	Berlin F2 Common 13	Backend Developer
Danielle Savas	Office	Berlin F3 Lab	IT Consultant
Henry Thierhoff	Home Office	Berlin, Prenzlauer Berg	Project Manager
Chris Bieri	Seatti Workspace	Berlin, WeWork Mitte	Senior Software Developer
Andrea Trost	Office	Aachen F1 Mac 3	Project Manager
Helmut Krcmar	Office	Aachen F1 Common 57	Senior Researcher
Lisbeth Moreno	Home Office	Aachen, Mitte	Junior Software Developer

With our Microsoft Teams plugin, you...

- Maximize User Adoption
- Ensure regular and long term system usage
- Integrate office management in employees' daily workflows
- Benefit from an easy technical implementation
- Avoid yet another stand-alone tool that nobody uses.



Your Benefits

Make use of all the Pro's of Mobile Work and eliminate all the Downsides.

More Collaboration

Promote collaboration, innovation and culture by enabling 75% more personal meetups in the office and remotely.

Easy Implementation

As a MS-Teams Plugin, Seatti can be installed in a day and employees don't need long onboardings due to the familiar UX.



The tool has been developed in close compliance with DSGVO and "Betriebsrat" requirements. EU-Servers, no personal data.

GDPR Compliant

Seatti provides the long term data to develop a more efficient workplace strategy, reducing CRE cost by up to 60%.

Reduce Costs



Your Contact

Christopher Bieri



**CO-FOUNDER
& CEO**

You can call me Chris!
Contact me for business inquiries :)

chris@seatti.co

+49 151 104 387 38

Johannes Eppler



**CO-FOUNDER
& CPO**

You can call me Jojo!
Contact me for technical topics />

johannes@seatti.co

+49 151 210 897 43



Seatti

www.seatti.co / team@seatti.co / +49 (0) 151 104 387 38