

**CLOSING THE GAP
BETWEEN STRATEGY
TO EXECUTION**



ValueMiner is the only **all-in-one AI Platform** enabling **effective deployment** and **execution** of your **strategies**.

Our bespoke software is tailored to accommodate your specific methodology preferences or a mix of those, including Hoshin Kanri, Mintzberg, Five Forces, OKR and more.

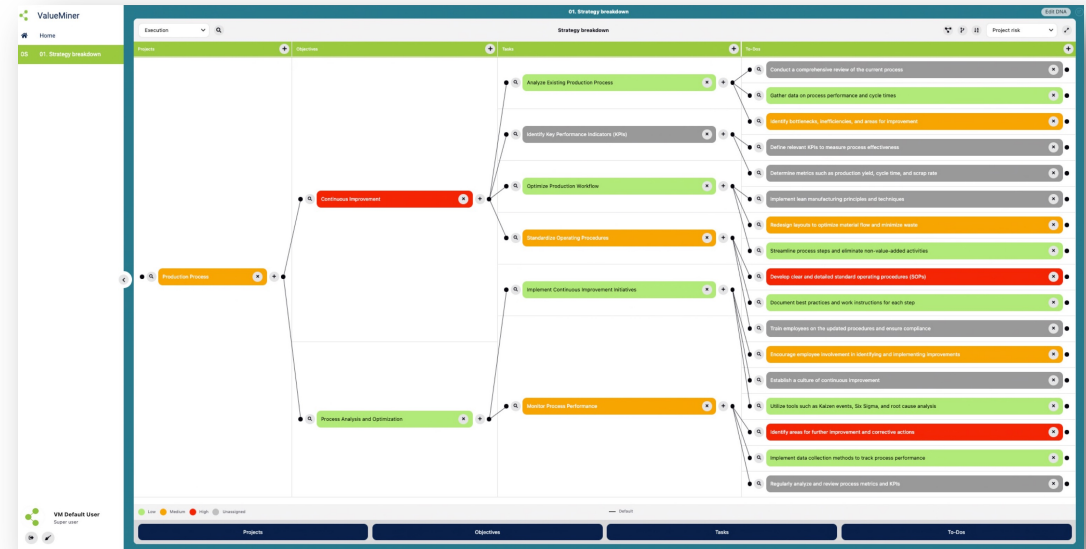
It enables you to consider dependencies that may have been overlooked, providing valuable insights, and enhancing your decision-making process and alignment.

Whether you have a small team, or a large international network of employees, being on the same page regarding strategic goals is essential.

VISUALIZE YOUR OBJECTIVES AND ENGAGE YOUR TEAM

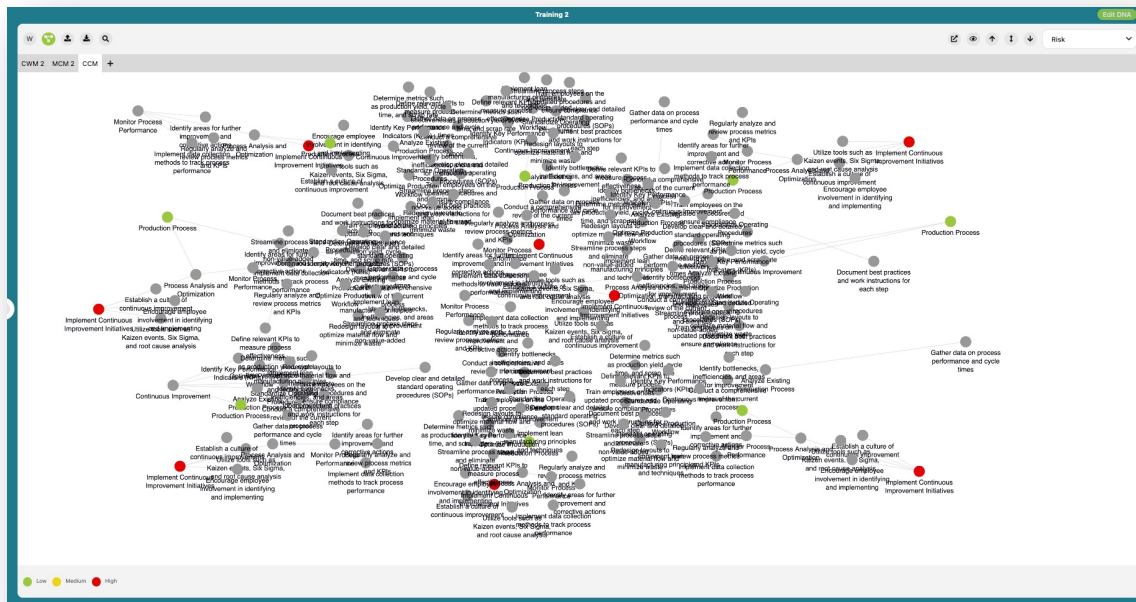
Let's assume you use the proven Hoshin Kanri methodology, ValueMiner AI Strategy Platform empowers you to **break down your strategies** to their finest level of execution without losing sight of the bigger picture. Gain unparalleled **visibility** and **alignment** on goals and actions and foster higher **employee engagement and commitment**. Key features include:

- Connect activities to objectives
- Visualize interdependencies and contributions transparently
- Set priorities and define deadlines
- Assign roles and responsibilities
- Notify your employees with tailored notifications



EMPOWER YOUR TEAM WITH REAL-TIME DATA

ValueMiner is the user-friendly and intuitive platform matched with **Microsoft OpenAI services** and designed to keep your **employees at their best**, and **data secured**. Key features include:

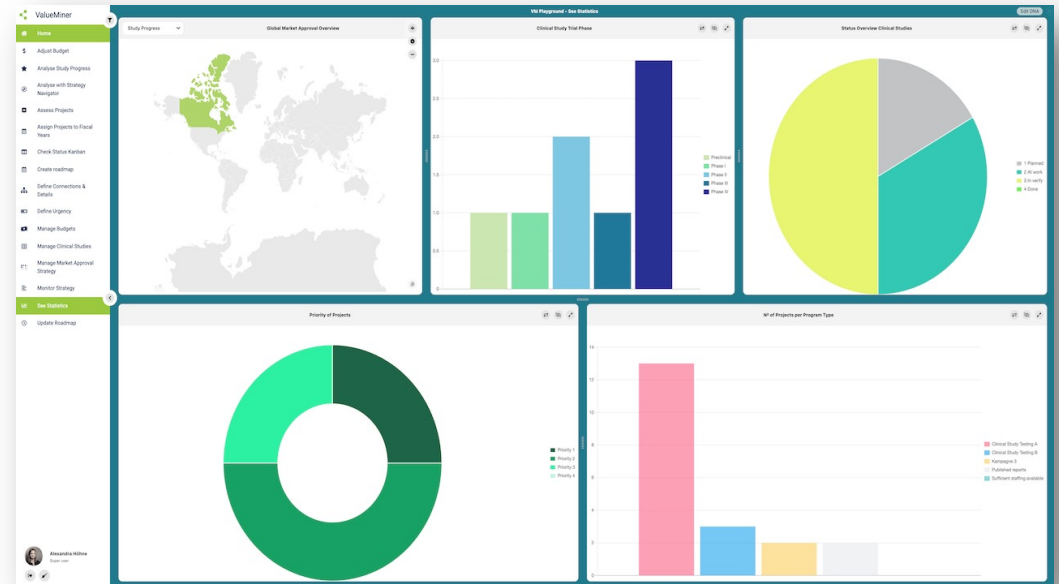


- Connect complex data through an interactive neural network that adapts to changing conditions
- Store your data continuously
- Make real-time adjustments, keeping you agile and responsive to evolving needs.

UNLOCK REAL-TIME INSIGHTS

Stay always ahead of the game with ValueMiner's **reports and analysis**. Easily track and analyze performance through eye-catching reports that empower you to enhance your results. Key features include:

- Follow progress in real-time
- Utilize data to proactively stay ahead
- Adapt the view of reports to drill down into specific results
- Effortlessly export your analysis





SAVE TIME

ENGAGE

GROW!