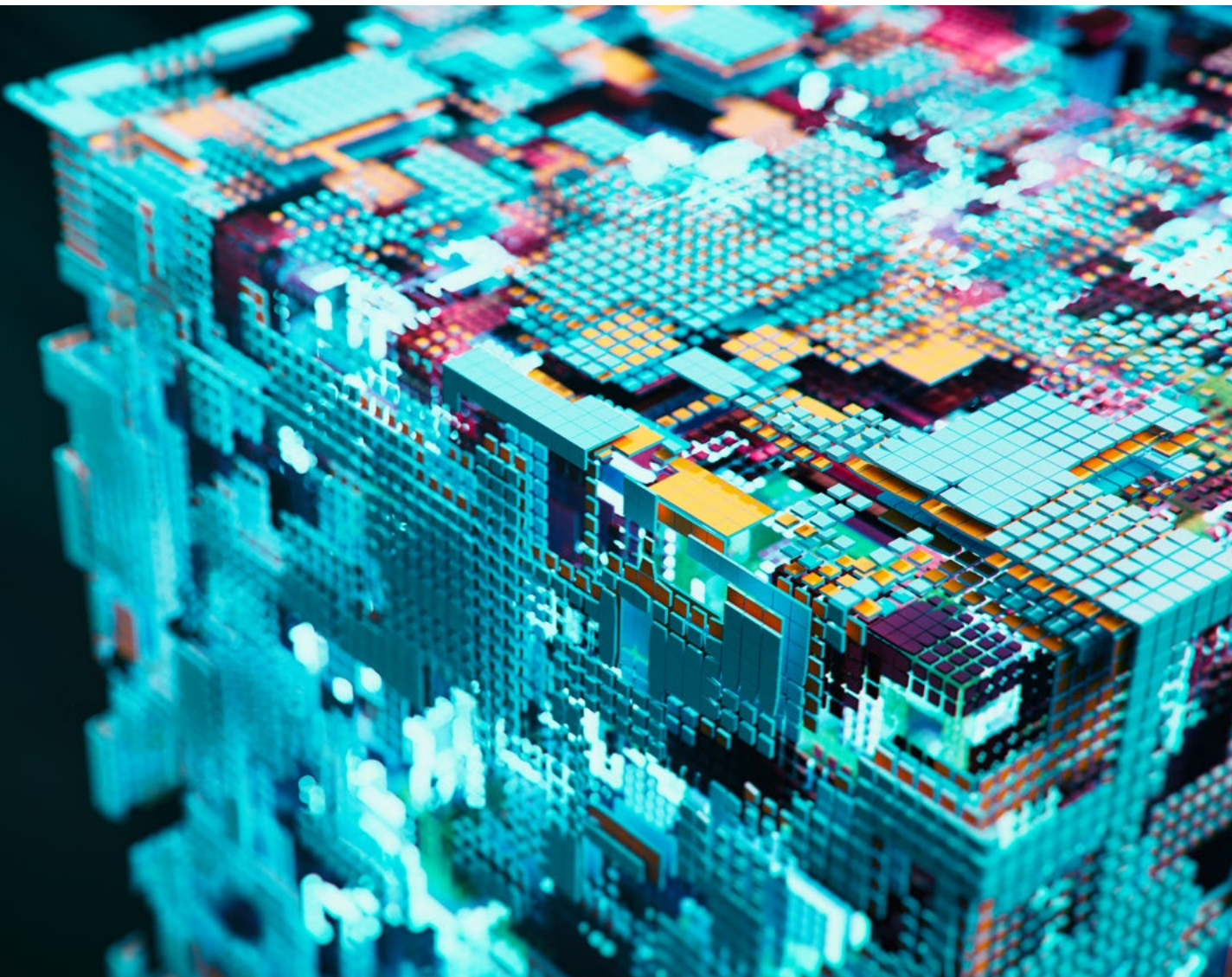




Boulevard du Jazz, 13  
L-4370 Belvaux  
Luxembourg  
[www.arhs-spikeseed.com](http://www.arhs-spikeseed.com)

# WELL-ARCHITECTED REVIEW

Are you well-architected?



## WELL-ARCHITECTED REVIEW

# ARCHITECTURAL BEST PRACTICES

The Well-Architected Framework is a structured approach of best practices developed to help cloud architects build secure, high-performing, resilient, and efficient infrastructure for their applications.

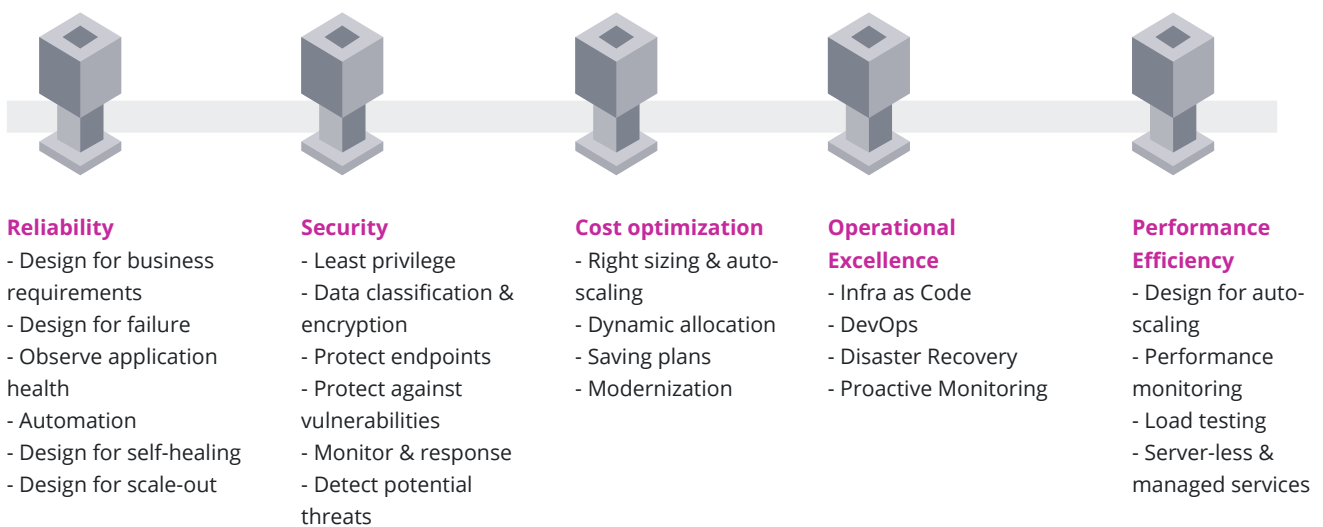
## MICROSOFT AZURE WELL-ARCHITECTED FRAMEWORK

The Well-Architected Framework provides a structured and consistent approach to help accelerate cloud adoption and optimize business value over time.

The Well-Architected Framework is organized around 5 best practice pillars:

1. Operational excellence
2. Security
3. Reliability
4. Performance efficiency
5. Cost optimization

Our Well-Architected Reviews proceeds from the different pillars and performs an audit of your architecture to identify areas of improvements.

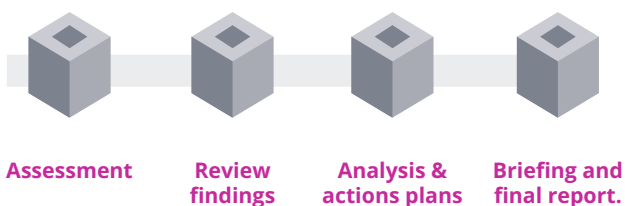


## BUILD BETTER WORKLOADS

As a Microsoft Azure Gold Partner, Arqs SpikeSeed provides architecture reviews to ensure that your environment is following Microsoft Azure best practices.

We will help you compare your workload against the Microsoft Azure Well-Architected standards – guiding you

to build stable and efficient systems, taking advantage of the best the Microsoft Azure services can offer, so that you can focus on functional requirements. The output highlights potential issues and suggests improvements for each pillar, categorized by priority and time-to-market.



## FOR WHOM?

A Well-Architected review is aimed to be delivered to:

- Software and System Architect
- Development Team
- Operations Team