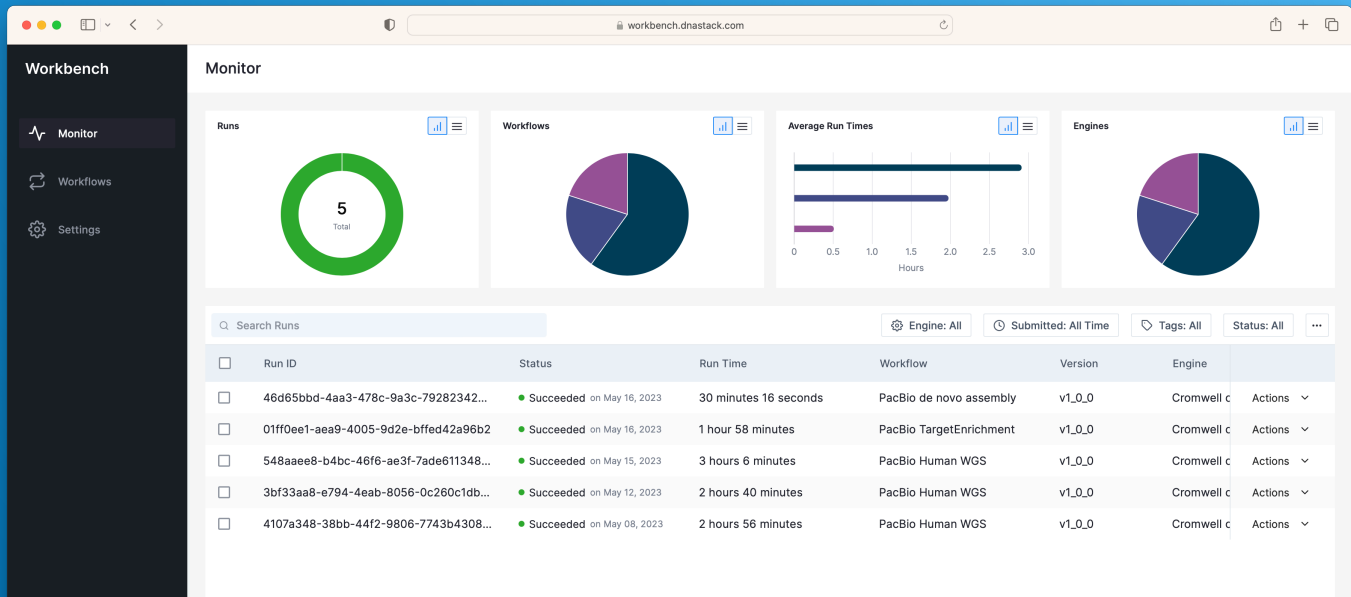


Introducing Workbench

The ultimate data analysis pipeline for genomics and health research



Supercharge your analysis

Workbench makes it easy to analyse genomics and health data. With Workbench, you can execute custom and best practices pipelines in the cloud or on premises. Unlike other platforms, Workbench allows you to connect your own engine, so that you can perform scalable and reproducible analyses in your own environment, without needing to upload it to someone else's. With simple user and command line interfaces, Workbench makes it easy for you to automate workflows, on any cloud, in any region, and on any data. Workbench is compliant with industry standards established by the Global Alliance for Genomics & Health.

Key Benefits

- ✓ **Cost:** reduce costs by paying only for what you consume, with zero margins on compute, storage, and networking
- ✓ **Sovereignty:** maintain control of your data by running pipelines in your own environment in the cloud or on premises
- ✓ **Reproducibility:** run custom and best practices pipelines without needing to rewrite them for new environments
- ✓ **Scalability:** scale up and down your analyses by bursting into the cloud, with virtually unlimited compute capacity
- ✓ **Simplicity:** make things simple by automating large number of runs using a simple UI and CLI
- ✓ **Compliance:** operate in compliance with global open standards developed by the Global Alliance for Genomics & Health
- ✓ **Federated:** run privacy preserving federated analyses on data that are located in multiple different environments

To get started email support@dnastack.com

