

AgileIT.

ADAPTIVE • RESPONSIVE • STRATEGIC

Onboarding & Migration

Microsoft 365 GCC High & Azure Government

Delivered by **Agile IT**
We make **IT** easy

Agile IT Purpose and Passion

By being 100% unapologetically focused on Microsoft cloud services, we can deliver strategic consulting & technical implementation through a single vendor to our customers.

US Federal Government Regulations & Requirements



Executive Order 13800

Strengthening the Cybersecurity of Federal Networks and Critical Infrastructure

NIST IR 8170: The Cybersecurity Framework

"Federal agencies and contractors must adhere to both common and unique cybersecurity and acquisition requirements"

Defense Federal Acquisition Regulation Supplement (DFARS)

Safeguarding Covered Defense Information and Cyber Incident Reporting

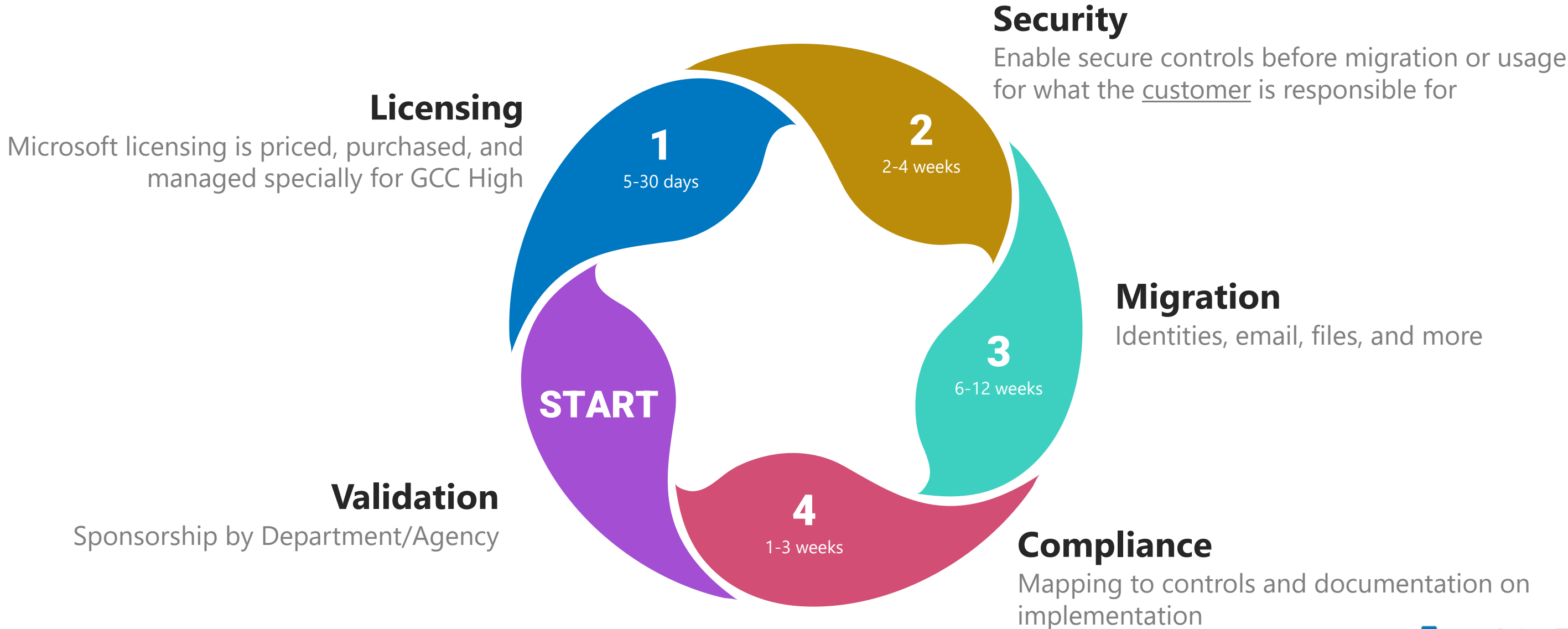
Government Accountability Officer report no. GAO-10-693

Stronger Safeguards Needed for Contractor Access to Sensitive Information

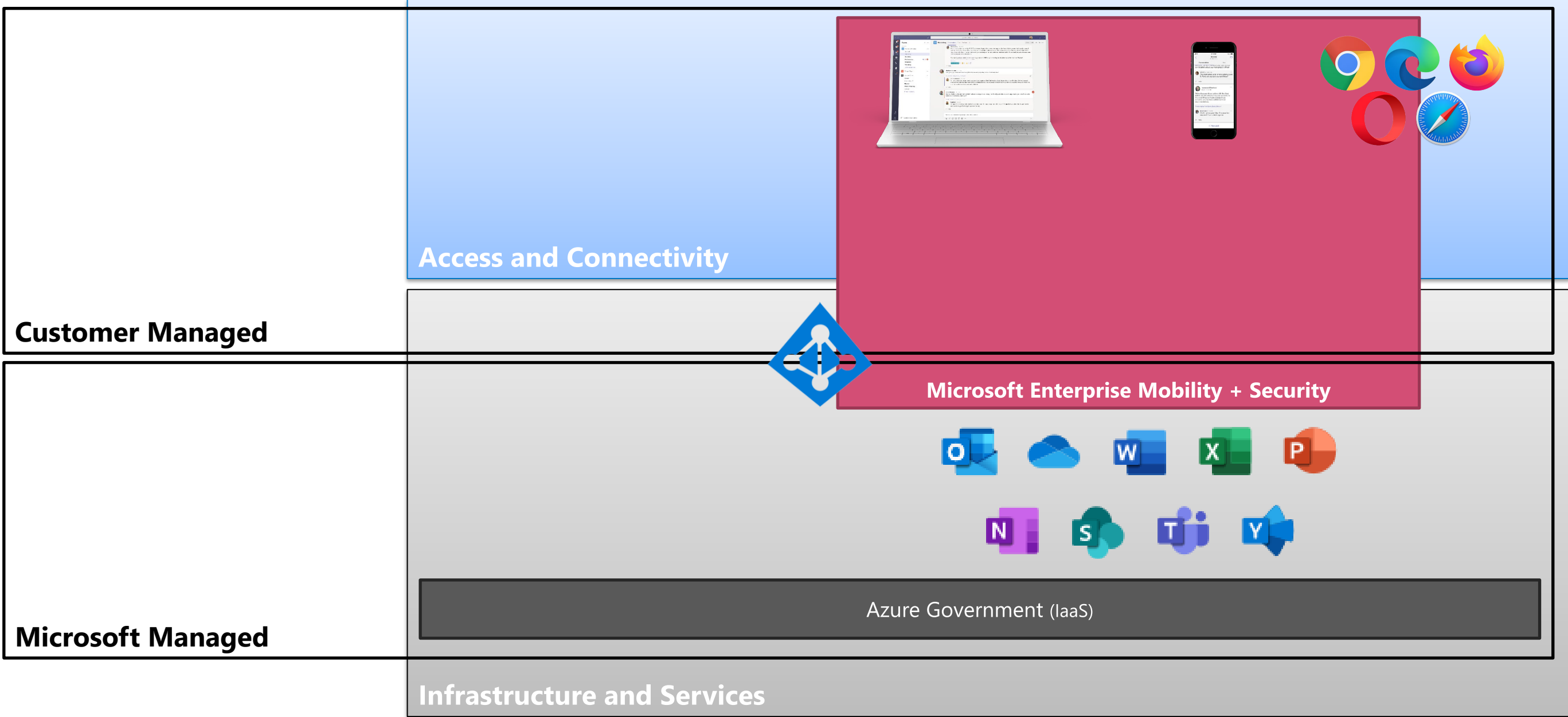
NIST 800-171

NIST 800-171 is designed specifically for non-federal organizations that process, store or transmit sensitive federal information

Agile IT Services with GCC High

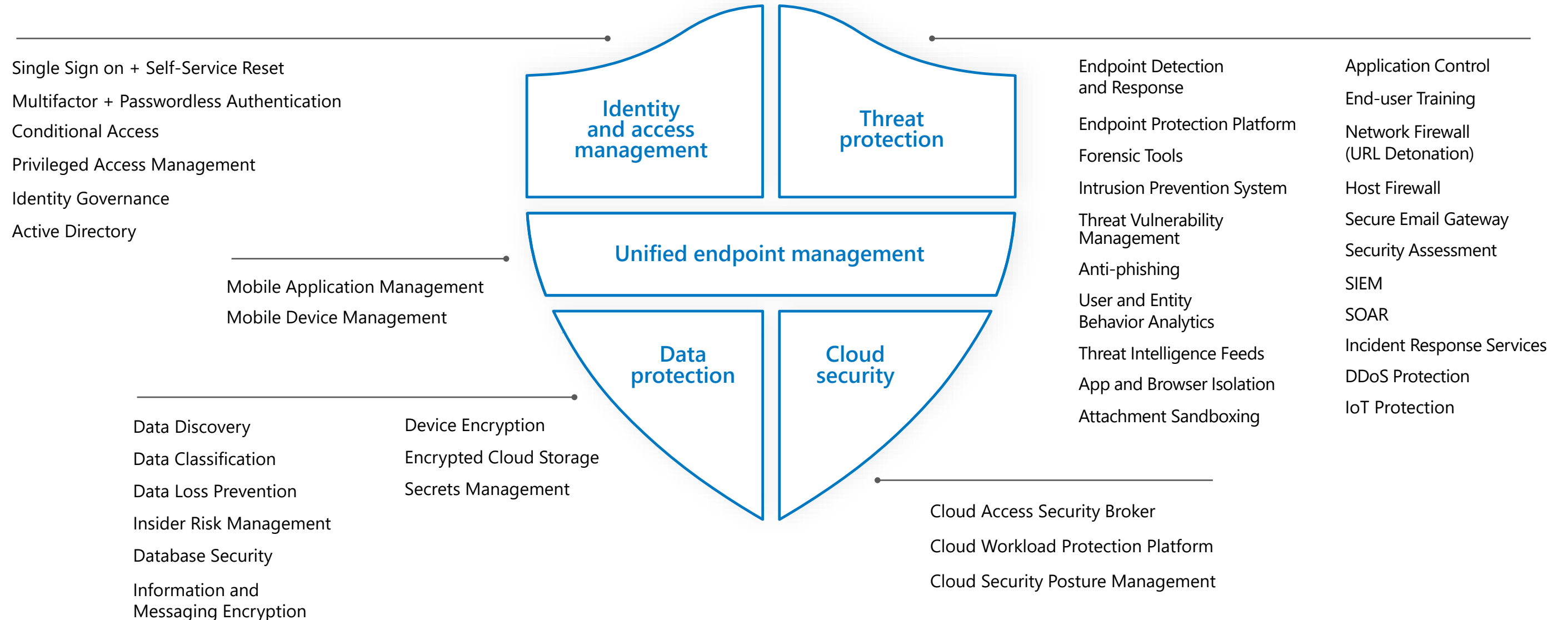


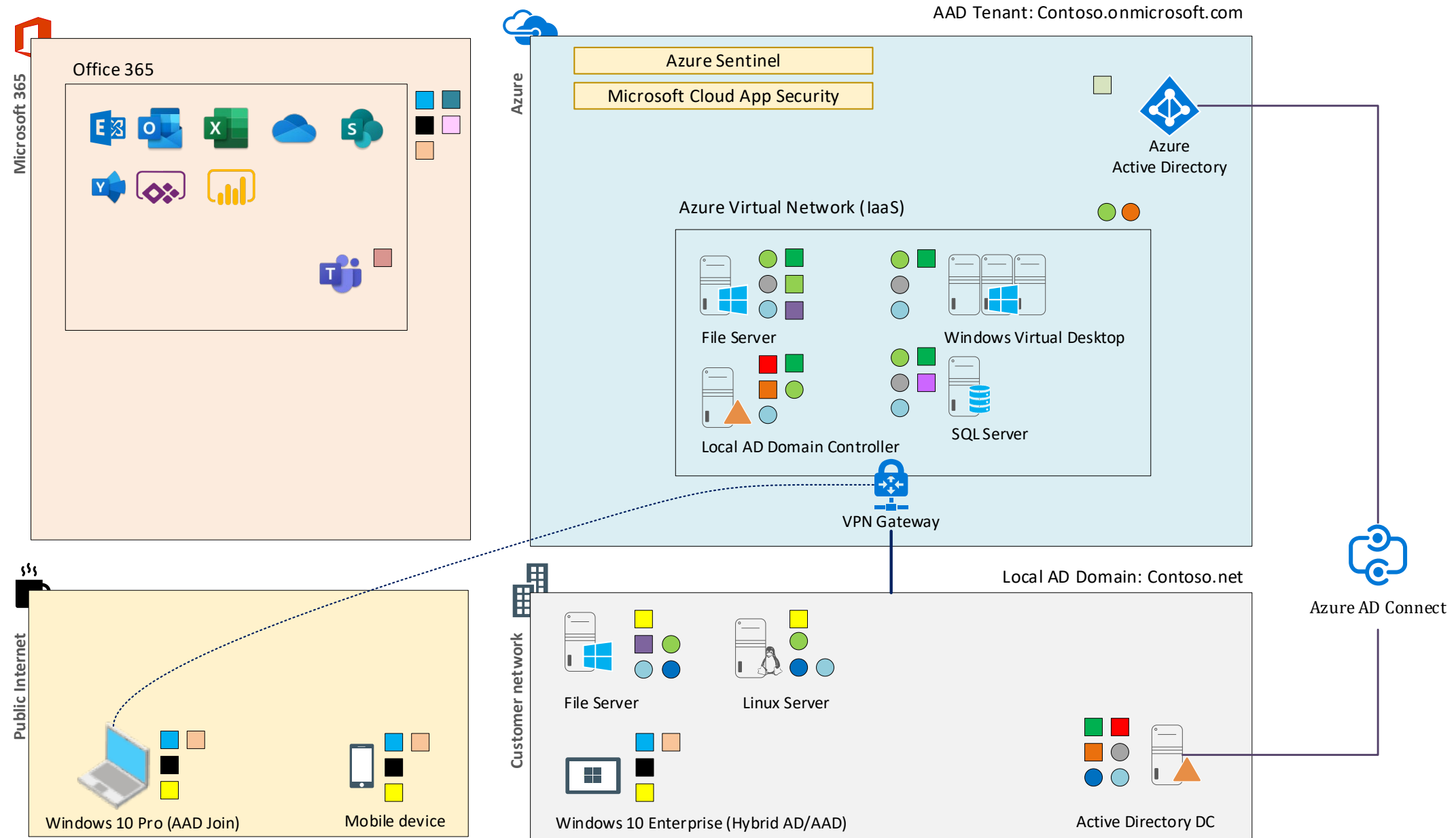
The Shared Responsibility Model



Streamline and strengthen

Replace up to 40 disparate products with integrated, end-to-end security.





- | | | | |
|-----------------------------------|---------------------------------|------------------------------------|-------------------------------|
| Azure AD: MFA/CA | Azure AD Connect Health | Information Governance | Azure Bastion |
| Azure AD: Identity Protection | Microsoft Defender for Identity | Records Management | Azure Security Center |
| Endpoint Manager (Intune) | Microsoft Defender for Endpoint | eDiscovery | Azure Automation Account |
| Information Protection | Azure Defender for Servers | Office 365 Message Encryption | Azure Monitor (Log Analytics) |
| Microsoft Defender for Office 365 | Azure Defender for SQL | Office 365 Adv. Message Encryption | Azure Arc |
| Microsoft Endpoint DLP | Information Protection scanner | Communication Compliance | |
| Communication DLP for Teams | Insider Risk Management | | |

Consumption User Licensing

AgileAscend: Onboarding for Microsoft 365 GCC High

	Plan 1	Plan 2	Plan 3	Plan 4	Plan 5
GCC High Tenant Onboarding License acquisition, tenant creation, Azure Government subscription connectivity, and licensing guidance	Y	Y	Y	Y	Y
Onboarding Azure Active Directory for Microsoft 365 ¹ Overview, guidance, and deployment of Agile IT standards	Y	Y	Y	Y	Y
Conditional Access & Multi-Factor Authentication ¹ Overview, guidance, and deployment of Agile IT baseline policies	Y	Y	Y	Y	Y
Onboarding for Intune for Mobile Devices ² Overview, guidance, and deployment of Agile IT baseline policies for mobile devices (e.g phones and tablets)		Y	Y	Y	Y
Onboarding for Azure Information Protection ³ Overview, guidance, and deployment of Agile IT baseline policies for protecting content directly (files, email, etc.)			Y	Y	Y
Government Compliance and Data Governance Essentials Overview, guidance, documentation, Microsoft Compliance Center on mapping services deployed to NIST 800.171 controls			Y	Y	Y
Onboarding Windows 10 for Microsoft 365 ⁴ Utilize the Microsoft 365 architecture to configure, update, and secure Windows 10 clients				Y	Y
Onboarding Azure Security and Compliance (Standard) ⁵ Guidance and configuration for Microsoft Azure Sentinel (Security Information and Event Management) and Microsoft Defender product and services					Y

- Project Management is included within each plan
- Services that have Microsoft license dependencies

1. Azure Active Directory Premium P1 (included within EM+S E3 and Microsoft 365 E3)
2. Microsoft Intune (included within EM+S E3 and Microsoft 365 E3)
3. Azure Information Protection P1 (included within EM+S E3 and Microsoft 365 E3)
4. Windows 10 E3 or E5 (Also available in Microsoft 365 E3 and E5)
5. Microsoft Azure Government subscription with consumption charges apply

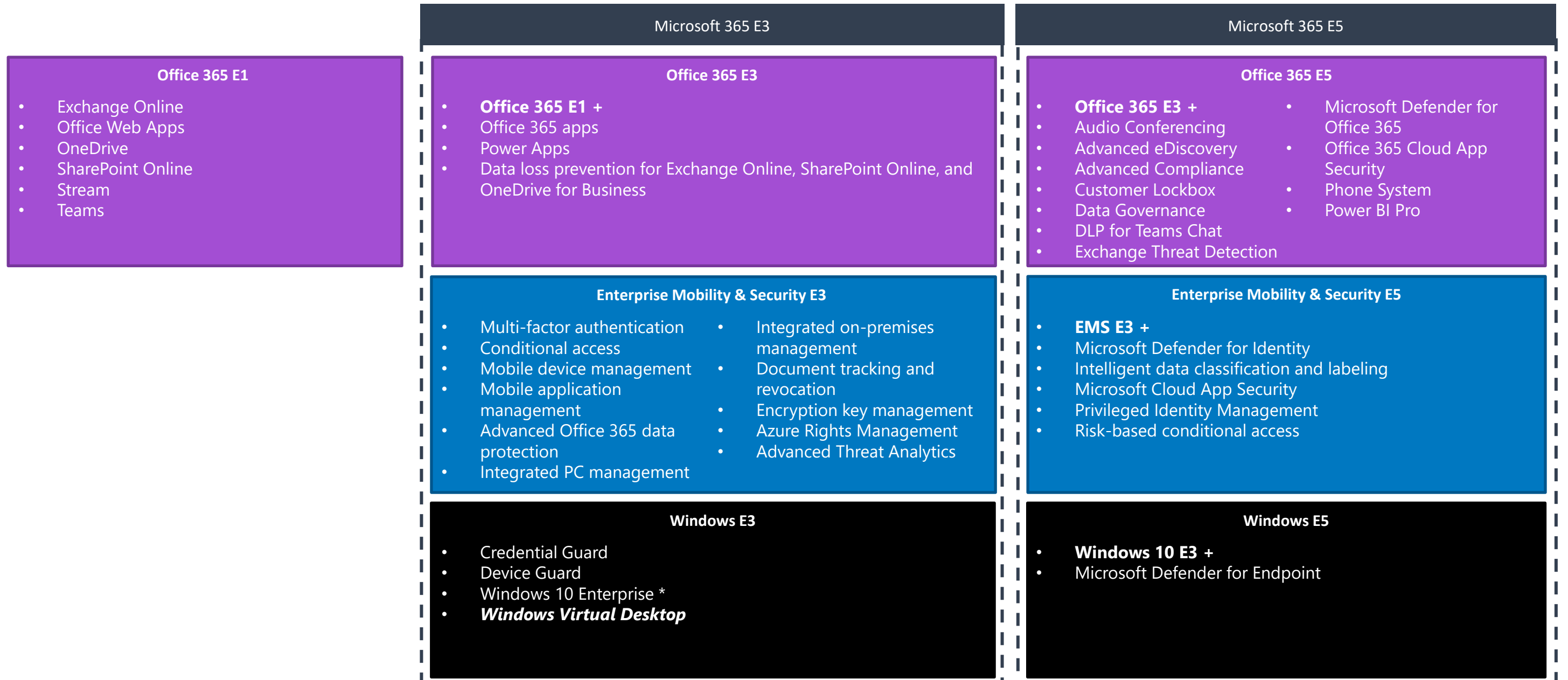
Compliance Manager

The screenshot displays the Microsoft Compliance Manager interface. On the left is a navigation sidebar with options: Home, Compliance Manager (selected), Data classification, Data connectors, Alerts, Reports, Policies, and Permissions. Below the sidebar is a 'Solutions' section. The main content area is titled 'Compliance Manager' and includes a 'Compliance Manager settings' link. A navigation bar contains 'Overview', 'Improvement actions', 'Solutions', 'Assessments' (underlined), and 'Assessment templates'. A descriptive paragraph explains that assessments help implement data protection controls. Below this is an 'Add assessment' button and a summary of '3 items' with search, filter, and group options. A table lists three assessments: CMMC Level 3, NIST 800-171, and Data Protection Baseline, each with columns for Status, Assessment progress, Your improvement act..., Microsoft actions, and Group.

Assessment	Status	Assessment progress	Your improvement act...	Microsoft actions	Group
CMMC Level 3	Not started	61%	0 of 333 completed	398 of 398 completed	Government
NIST 800-171	Not started	64%	0 of 315 completed	405 of 405 completed	Government
Data Protection Baseline	Not started	66%	0 of 506 completed	725 of 725 completed	Default Gro

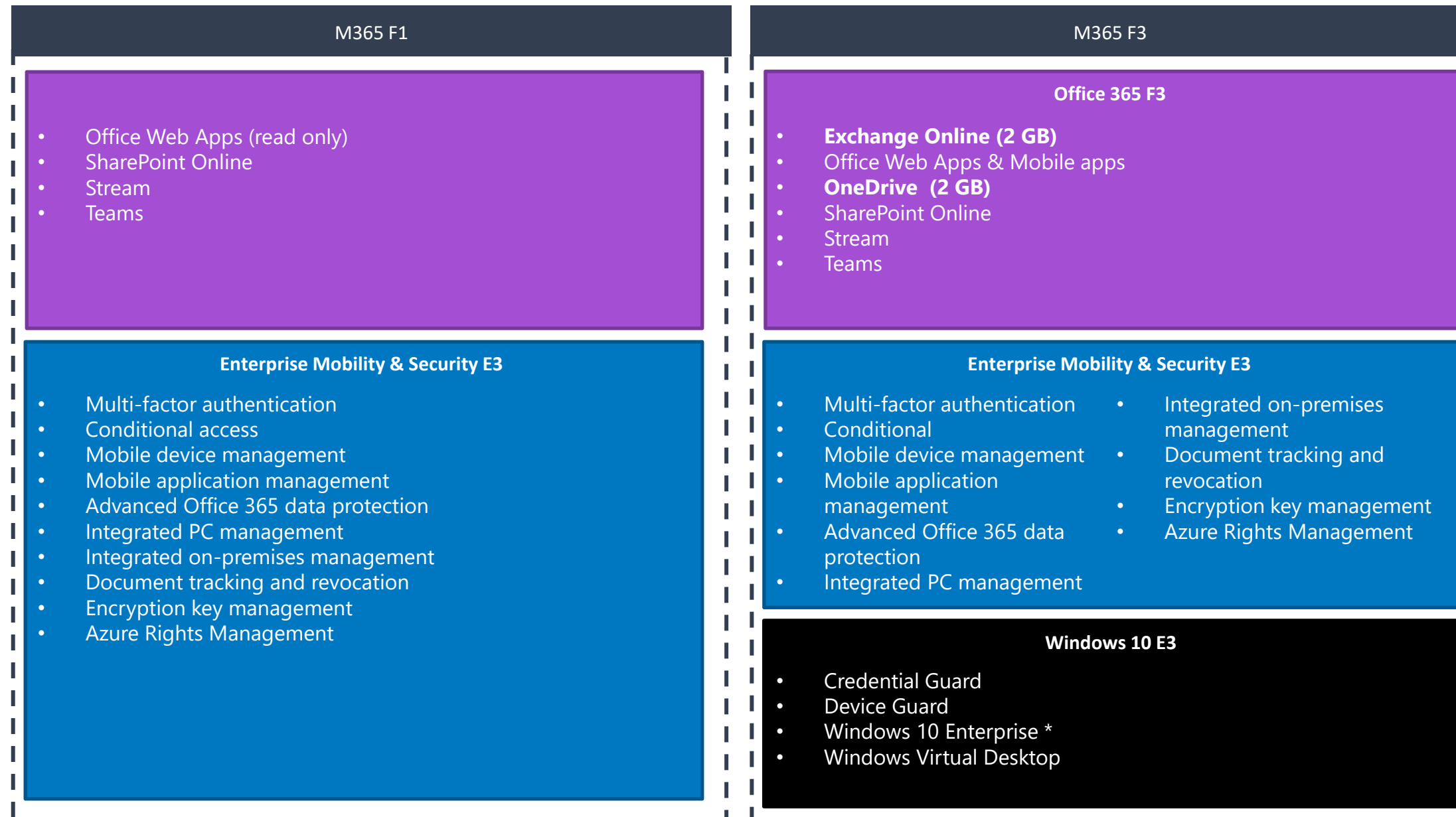
- All organizations with Office 365 and Microsoft 365 licenses, and US Government Community (GCC) Moderate and GCC High customers, have access to Compliance Manager. However, the assessments available to your organization and how you manage assessment templates depends on your licensing agreement.
- Customers with **Office 365 E5/A5** and **Microsoft 365 E5/A5 licenses** will be able to access Data Protection Baseline, GDPR, NIST 800-53, and ISO 27001 out-of-the-box assessments, as well as make use of the custom assessment feature. Premium assessments will be available for purchase to Office 365 E5/A5 and Microsoft 365 E5/A5 customers.

Microsoft Licensing for GCC HIGH: Enterprise



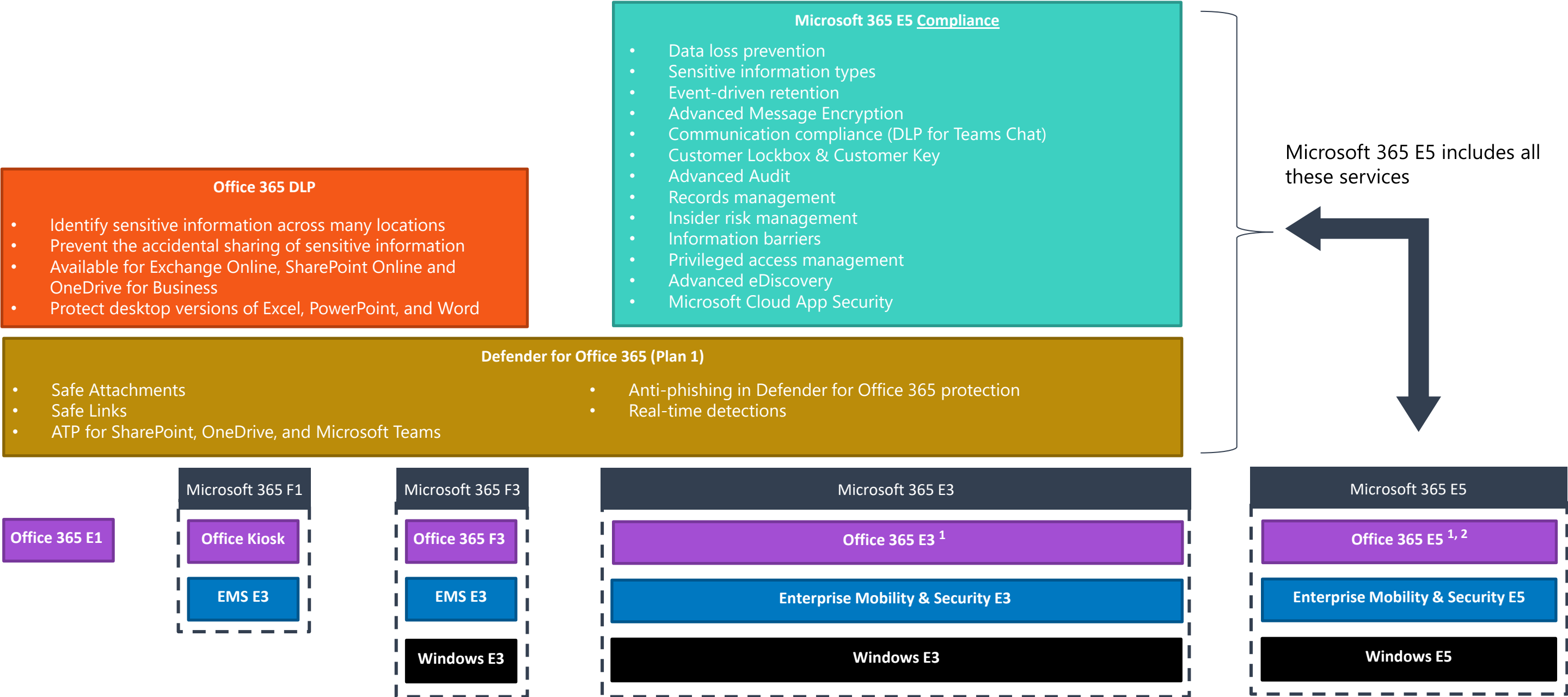
* Windows 10 Pro required

Microsoft Licensing for GCC HIGH: Frontline Workers



* Windows 10 Pro required

Additional Security/Compliance Licensing



¹ Office 365 DLP included

² Defender for Office 365 Plan 2 included

- Threat Trackers
- Threat Explorer
- Automated investigation and response

- Attack Simulator
- Campaign Views

Licensing required for GCC High environments

- **Microsoft 365 GCC High**
 - Annual payment for all users and services
 - Additional users are also pre-paid to the anniversary date
 - At renewal, all previous users are put into the next annual payment

- **Microsoft Azure Government**
 - Monthly payment based on consumption of services used
 - Required to store sign-in and audit logs from Microsoft 365 beyond 31 days