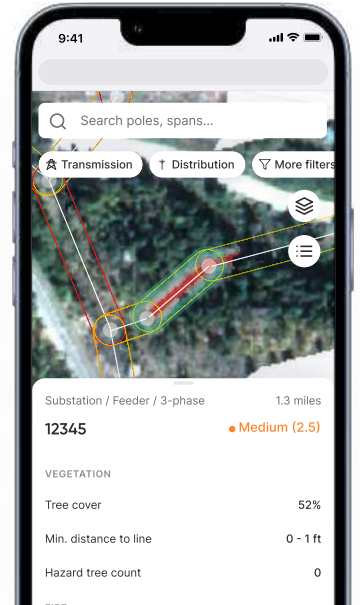
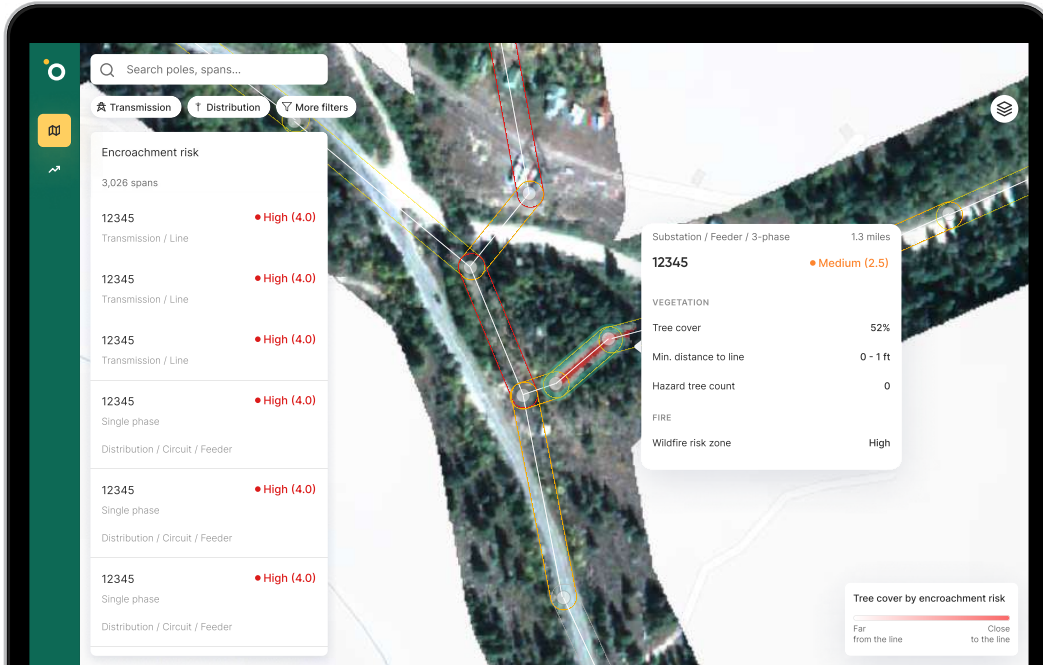


Vegetation management, optimized for impact



Maximize your budget

Prioritize vegetation management for the biggest impact on SAIDI without overhauling your processes.



Anticipate potential risk

Find hazard trees and hot spots so they don't become cycle busters and before severe weather strikes.



Optimize work plans

Get specific recommendations on how to reduce both SAIDI and fire risks, while reducing costs.



Estimate future trimming

Ensure more competitive bids across your network and audit completed work at a moment's notice.

Efficiency improvement including SAIDI and cost reduction

46%

Results projected for US distribution customer

Trimming efficiency improvement

64%

Results projected for US transmission customer


Return on investment

13x

Learn more and book a demo at overstory.com/demo

3D Encroachment


Get network-wide or span-level views on where vegetation encroaches onto your lines and structures.



3-phase 1.2 miles
Span 12345 ● Medium

VEGETATION

Tree cover	52%
Min. distance to line	0 - 1 ft
Overhang	Yes



Total hazard trees
57

Circuits by number of hazard trees

All substations ▾

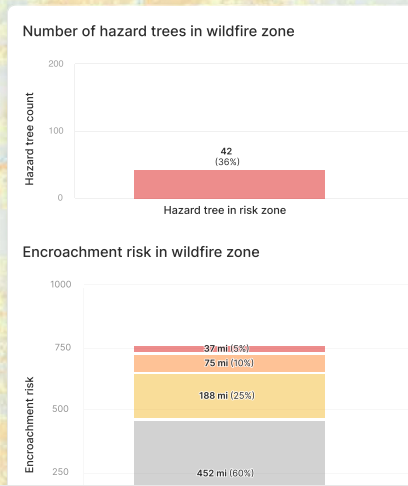
#1 - Circuit 2	15 >
#2 - Circuit 4	11 >
#3 - Circuit 6	8 >

Hazard Trees

Locate sick trees that are at risk of falling on the line before you send crews into the field.

Wildfire risk

Understand the wildfire risks at both the network and span level, and optimize your cycle planning accordingly.



AND MORE...

Outage and SAIDI forecasts

Contractor bidding

Overhang detection

Work planning

Pole and line correction

Flexible data formats