

**AZURE
COST
OPTIMIZATION
4-WEEK
ASSESSMENT**

THE FUTURE STARTS NOW

13K+

Associates

41

Offices

Europe, USA & APAC

12+

Countries

With SoftServe clients

78

**NPS score
(Global)**

10,500+

Engineers

1700+

Certified

Cloud Engineers

ISO

27001 : 2013

Standard

30%

CAGR

softserve

GLOBAL NETWORK

13,000+ experts in
41 offices globally



**OUR PEOPLE
MAKE THE
DIFFERENCE**

softserve

FEATURED CUSTOMERS



SOFTSERVE + MICROSOFT PARTNERSHIP

MICROSOFT GOLD PARTNER

Partner since 2004

MICROSOFT PRACTICE

- 2 Microsoft MVPs
- 500+ Satisfied Customers
- 1,000+ Delivered Projects
- 1,200+ Microsoft Certified Professionals
- 120+ Azure Certified Professionals

PROGRAM PARTICIPATION

- ECIF and AMMP Eligible
- More than 10 Co-sell Marketplace Offerings

11 GOLD COMPETENCIES

- Application Development
- Application Integration
- Cloud Platform
- Cloud Productivity
- Collaboration and Content
- Data Analytics
- Datacentre
- Data Platform
- DevOps
- Messaging
- Windows and Devices

1 SILVER COMPETENCY

- Security



softserve

SOFTSERVE CTO ORG CENTERS OF EXCELLENCE



RESEARCH & DEVELOPMENT

- R&D Innovation
- Feasibility Study
- R&D as a Service
- Deep Tech Research
- Advanced AI



EXPERIENCE DESIGN

- Design Thinking
- Design Research
- Design Strategy
- Product Design
- Service Design
- Design Ops



SOLUTIONS

- Digital Strategy
- Business Analysis
- Product Management
- Architecture
- Performance Testing



INTELLIGENT ENTERPRISE

- Big Data
- Data Science, AI/ML, MLOps
- IoT
- Robotics
- Extended Reality (AR / VR / MR)
- GDPR
- Blockchain
- Technical Due Diligence



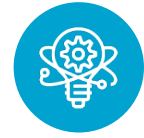
PLATFORMS

- Salesforce
- Sitecore
- MS Dynamics
- AEM
- EPiServer
- MuleSoft
- Magento
- Dell Boomi
- Shopify
- Drupal



CRITICAL SERVICES

- Cloud/DevOps
- Cyber Security
- Managed Support
- Enterprise IT



INNOVATION

- Innovation Strategy
- Innovation Platform

CLOUD EXPERTISE HIGHLIGHTS

900+

Cloud-Based
Solutions
Engagements

3000+

Cloud
Experienced
Professionals

1000+

Engineers with
cloud-related
certification

100+

Hyper
Converged
Projects

150+

Data Cloud
Experts

300+ BUSINESS ANALYSTS

- Consultants
- Business Analysts
- Usability Experts
- Project Management
- Project Managers

3000+ TECHNOLOGISTS

- Cloud Enterprise Architects
- Data Architects
- QA Engineers
- DevOps
- Technical Support

150+ STRATEGISTS AND DESIGNERS

- Digital Strategists
- Subject Matter Expertise
- Program Managers
- Experience Design and Usability
- Visual Designers



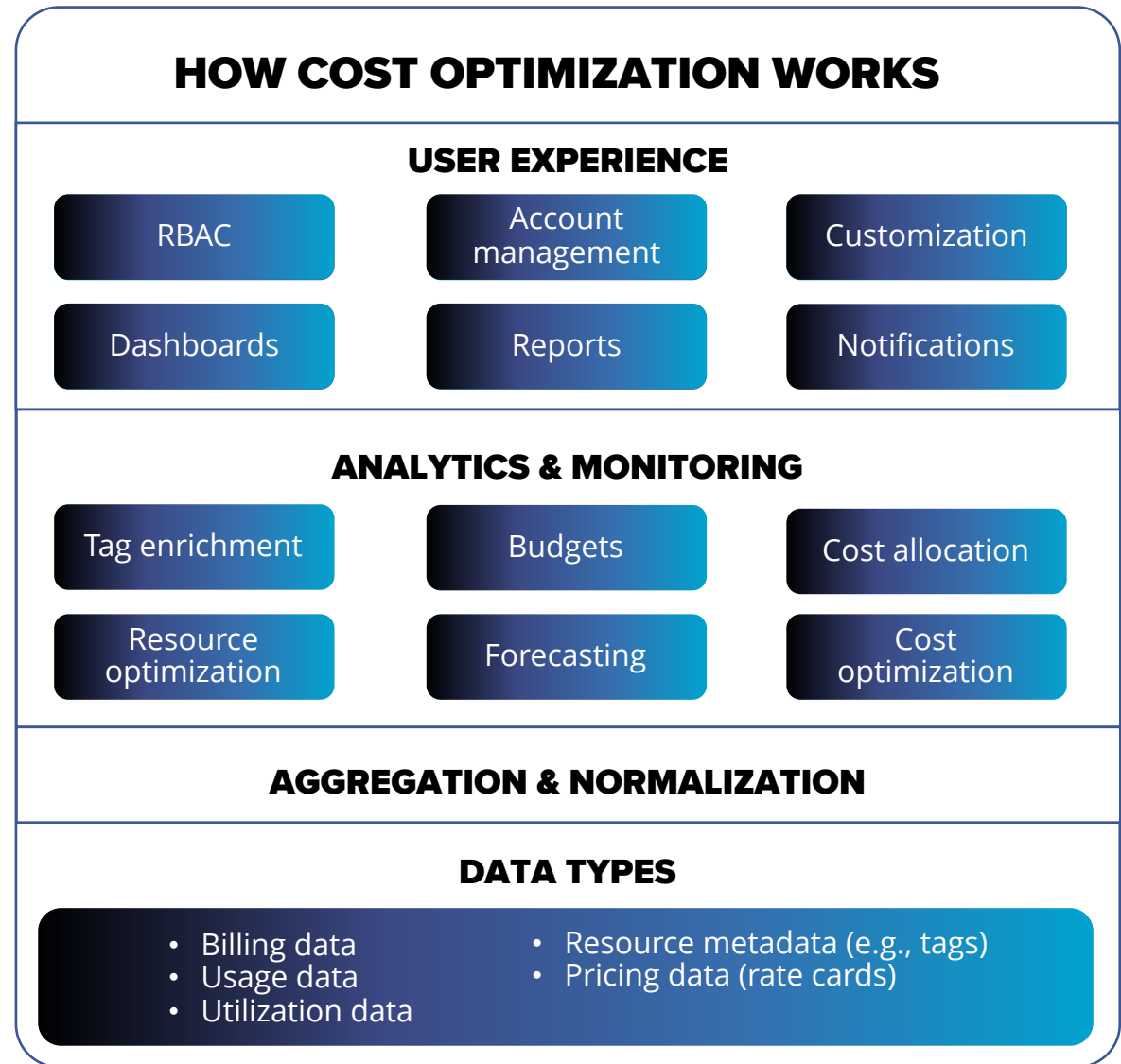
10 YEARS
PROVEN DELIVERY OF
CLOUD-BASED SOLUTIONS

softserve

SOFTSERVE'S COST OPTIMIZATION ASSESSMENT

CONSISTS OF

- **Examining the costs:** gather all the existing information — including billing, review documentation, interview stakeholders, and take a deep dive into the current cloud environment, processes, tools, automation, and licensing
- **Providing specific guidance** to decrease expenses in a short-term and long-term perspective
- **Defining and building** the overall cloud cost strategy



ASSESSMENT APPROACH

SoftServe service provides a holistic and strategic review of architectural solution design against industry best practices and the **Microsoft Azure Well-Architected Framework Cost Optimization pillar**.

The focus here is on enabling teams to avoid or eliminate unnecessary costs or suboptimal resources.

KEY PRINCIPLES FOR COST OPTIMIZATION IN ARCHITECTURAL DESIGN INCLUDE:

- Adopt a consumption model that optimizes the speed of deployment (as opposed to traditional financial governance and approval models)
- Implement automated controls and alerts that build guardrails around this low-friction approach
- Measure overall efficiency
- Analyze and attribute expenditure
- Use managed services to reduce the cost of ownership
- Ensure ongoing review and incentivization for changes are in place to drive active cost management

ASSESSMENT APPROACH

DISCOVERY

Week 1

- Identify stakeholders and cooperating schedule
- Introduce to Azure cloud cost optimization strategies and tactics
- Analyze and select cost optimization workloads/subscriptions

EVALUATION

Week 2-3

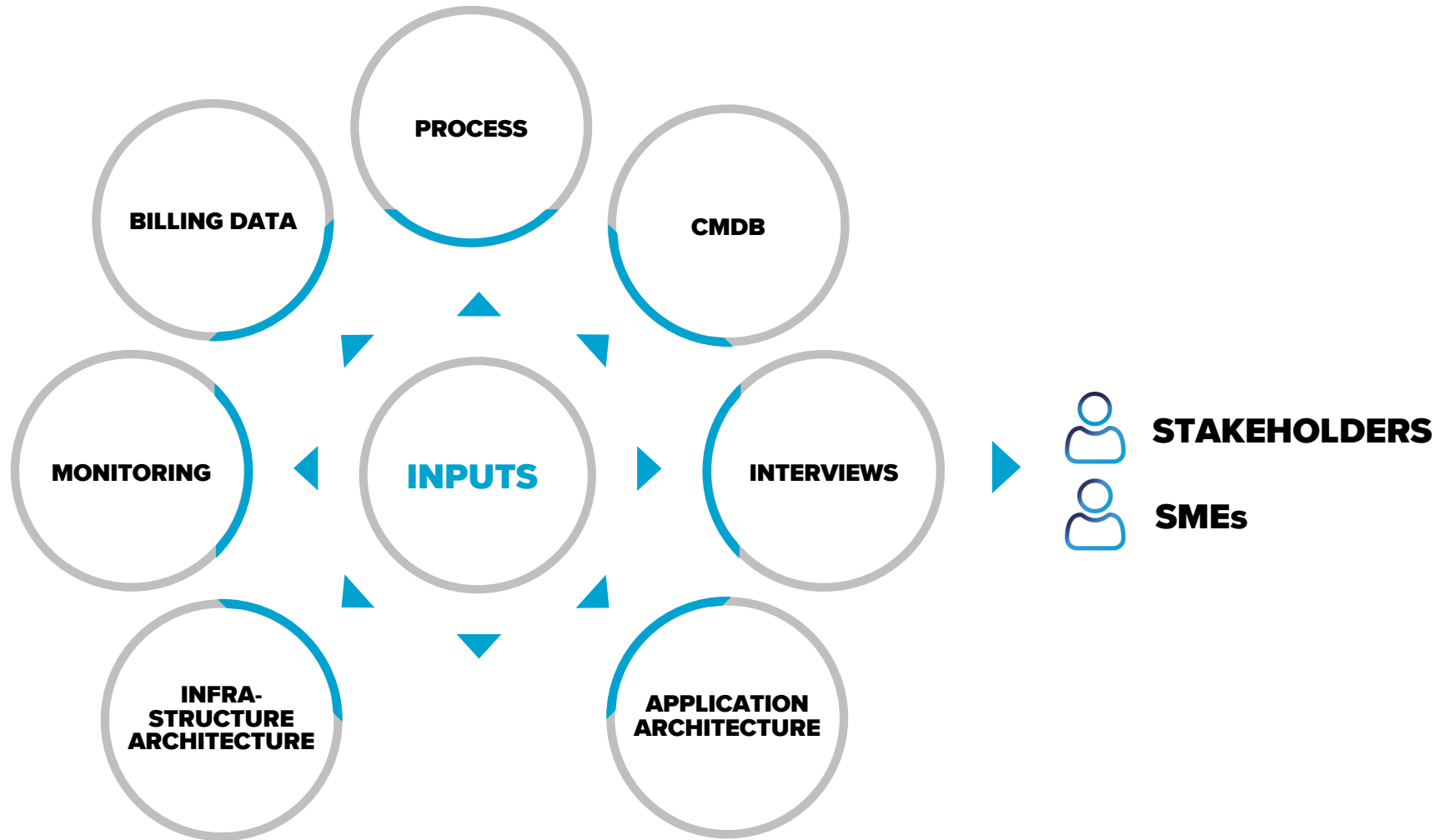
- Evaluate selected workloads/subscriptions
 - Review Azure Advisor scores
 - Analyze billing and cost
 - Interview stakeholders
 - Process the collected data

DELIVERY

Week 4

- Prepare an Assessment report:
 - Build a cost and usage report
 - Prepare a recommendations proposal to optimize cloud costs
 - Build a high-level implementation roadmap for cost optimization
 - Define cost optimization strategies
 - Calculate estimated savings
- Conduct feedback sessions with stakeholders
- Deliver the Assessment report with recommendations

INPUTS FOR ASSESSMENT



ASSESSMENT TEAM



CLOUD ARCHITECT

- Overall design and technical leadership
- Deliverable documents
- Technical expertise in designing, building, and optimizing systems
- Subject matter expertise (SME)



PROJECT MANAGER

- Interaction with a client to define the infrastructure management toolset
- Cost analysis and best tooling
- Technical expertise in developing and designing systems

VALUE

MONTHLY CLOUD BILL REDUCTION

after implementing the recommendations

10%–30%

Short-term
Action plan



20%–50%

Long-term
Action plan

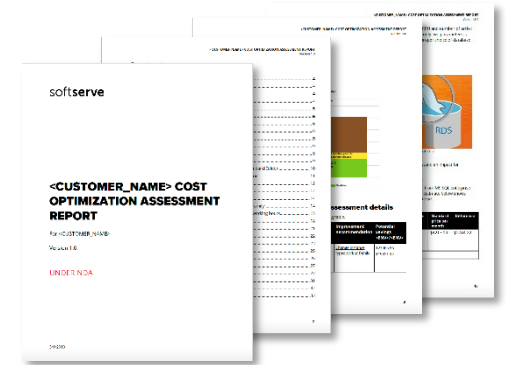
KEY DELIVERABLES

OPTIMIZATION STRATEGY & ROADMAP

- Technical gaps
- Cost-management process gaps
- Missing cloud provider best practices
- Non-direct costs

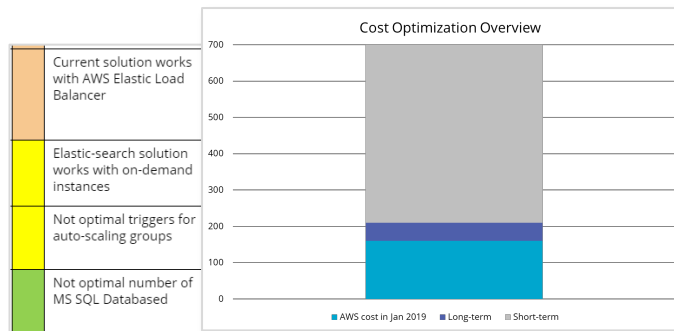


DETAILED REPORT



IMPROVEMENTS

- Actionable & prioritized recommendations to optimize cloud costs



COST MANAGEMENT RECOMMENDATIONS

- Cost classification and tracking
- Future cost modeling approach

Customer	Tenant size	Per Tenant Cost	Shared	AWS Shared Services	Total per customer
A	843	\$250,327.28	\$1,000.00	\$44,123.32	\$295,450.60
B	487	\$8,838.53	\$2,000.00	\$1,357.90	\$12,396.43
C	745	\$156,127.54	\$4,500.00	\$27,519.44	\$188,146.97
D	539	\$16,279.57	\$1,000.00	\$2,869.68	\$20,149.04
E	869	\$152,544.54	\$900.00	\$26,887.89	\$180,332.43
F	220	\$2,464.76	\$2,500.00	\$434.45	\$5,399.21
G	546	\$1,074.21	\$3,400.00	\$1,351.97	\$16,426.37
J	20	\$1,908.57	\$1,200.00	\$336.37	\$3,444.75
K	356	\$65,371.52	\$100.00	\$11,322.55	\$76,994.06
L	558	\$193,546.19	\$12,000.00	\$34,114.94	\$239,661.33
Total	5183	\$858,482.50	\$28,600.00	\$151,318.30	\$1,038,400.80

AWS Shared Services	
Athena(\$)	\$20.00
CloudFront(\$)	\$100.00
CloudTrail(\$)	\$200.00
CloudWatch Events(\$)	\$900.00
CloudWatch(\$)	\$500.00
Config(\$)	\$124.41
Data Transfer(\$)	\$500.00

**FOR
THE
FUTURE**

softserve