



Ipè

**Manage and
monitor corporate
sustainability data.**



Cloud application for corporate sustainability reporting.

Continuously improve performance and impacts on the environment and society is a challenge that millions of companies around the world have already begun to undertake.

Ipè aims to help companies report and manage complex **sustainability data**, through a full-featured data governance platform. Thanks to high quality tools, the reporting process becomes easier, and the quality of **sustainability reports** improves.

Ipè

Why a Sustainability Report?



01.

To take a stand

Sustainability will become increasingly important. It's essential to acknowledge it to ensure a better world for future generations.



02.

To enhance your company

Sustainability Reporting shows that a company has undertaken a serious, structured and transparent sustainability journey.

Ipè

Why a Sustainability Report?



03.

To improve reputation

It explains your contribution towards the Sustainable Development Goals and the links between the company's non-financial and financial performance.



04.

To communicate with stakeholders

It responds to the information needs of key stakeholders and investors by improving dialogue and communicating strategic choices and goals.

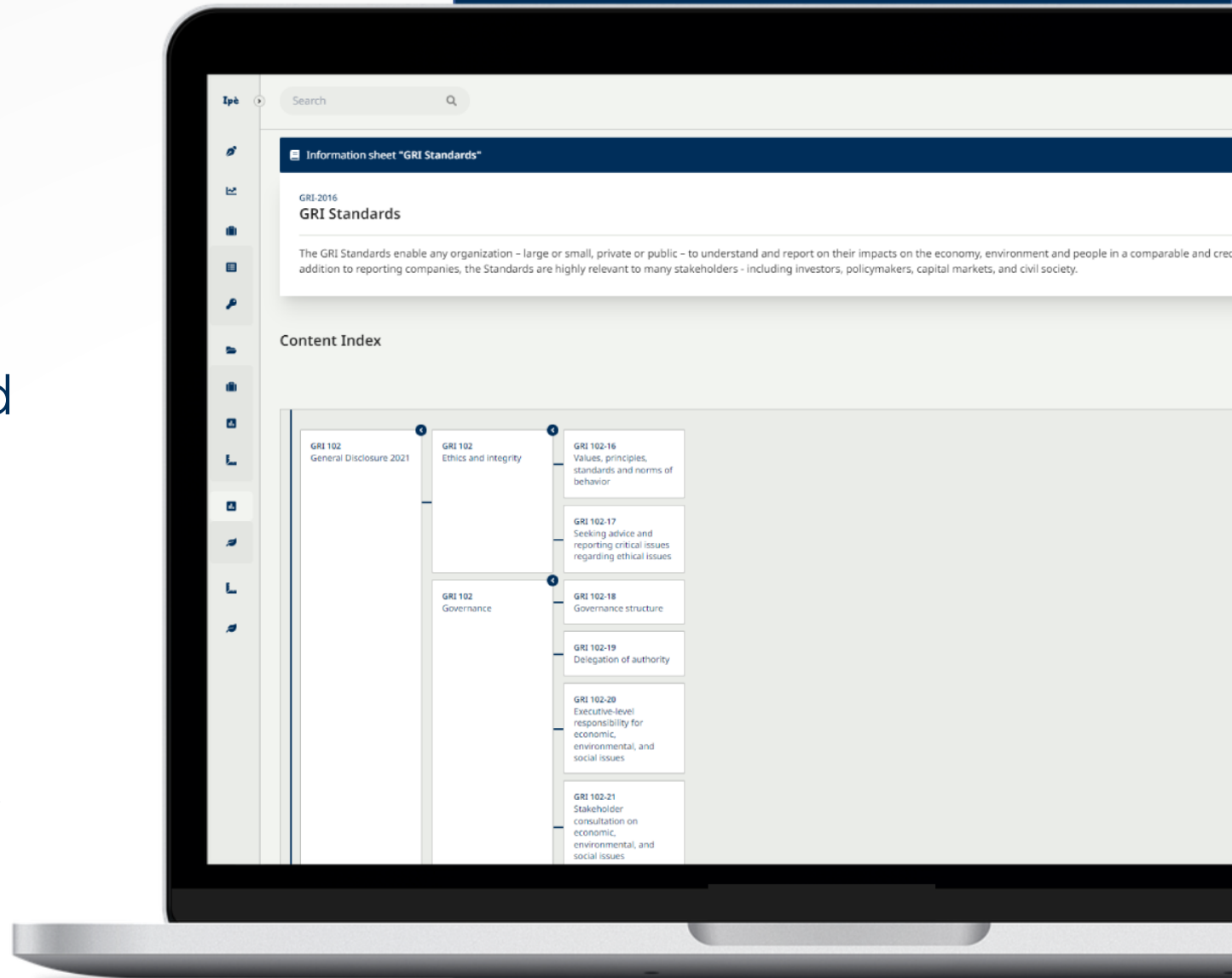


**How can Ipè help you in
your sustainability journey?**

STEP 1

ESG ASSESSMENT

We provide a tool to build and edit flexible taxonomies, helping you digitalize an ESG topic mapping. You can also edit, manage, and customize several famous international ESG frameworks like GRI, SASB, TCFD on your needs .

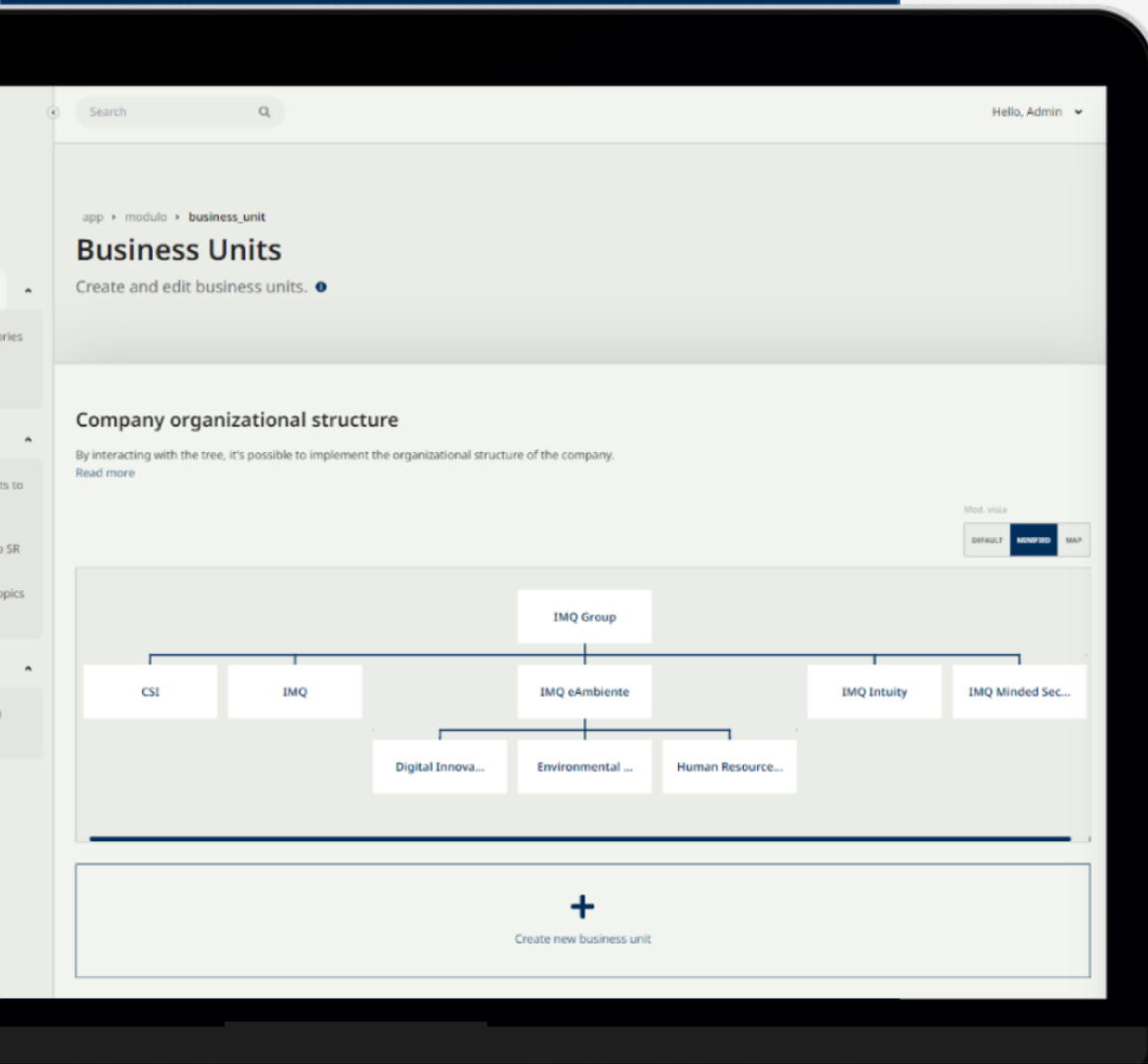




STEP 2

DEFINE SDG-ORIENTED STRATEGIES

Once you have conducted an ESG assessment, you can define sustainability goals by linking them, for example, to the UN Sustainable Development Goals (SDGs).



STEP 3

ORGANIZATIONAL STRUCTURE DIGITALIZATION

You can digitize your company's entire organizational structure, or a part of it, by associating user groups with each business unit, site and facility.

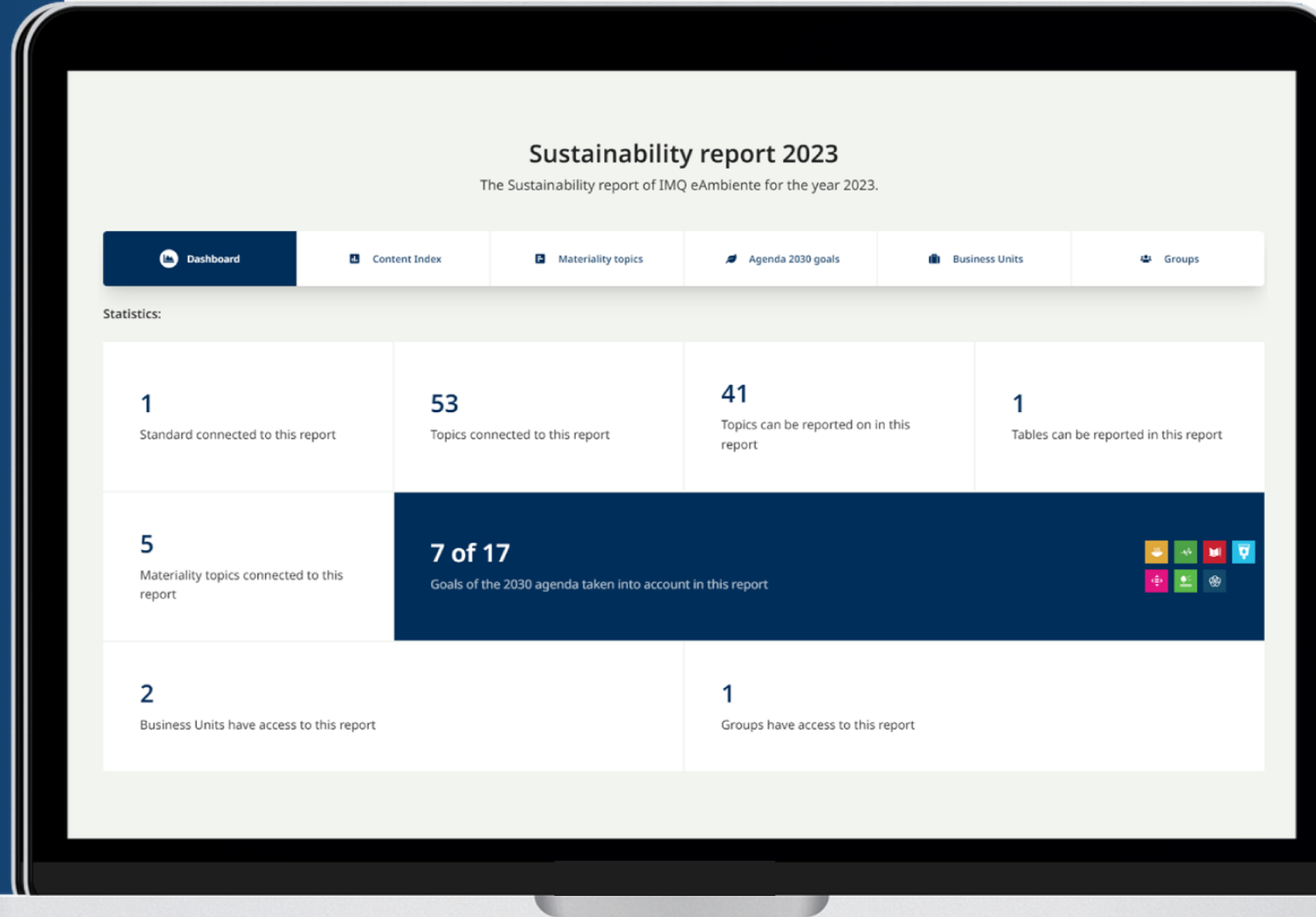
You can assign tasks for data collection and/or validation. This approach ensures a precise and granular data governance.

STEP 4

DEFINE REPORTING PROCEDURES

After the ESG assessment you can also conduct a materiality assessment, apply ESG frameworks to sustainability reports, define relationships between materiality topics and ESG topics.

You can assign corporate roles by determining who can consult, report and validate each part of every sustainability report.

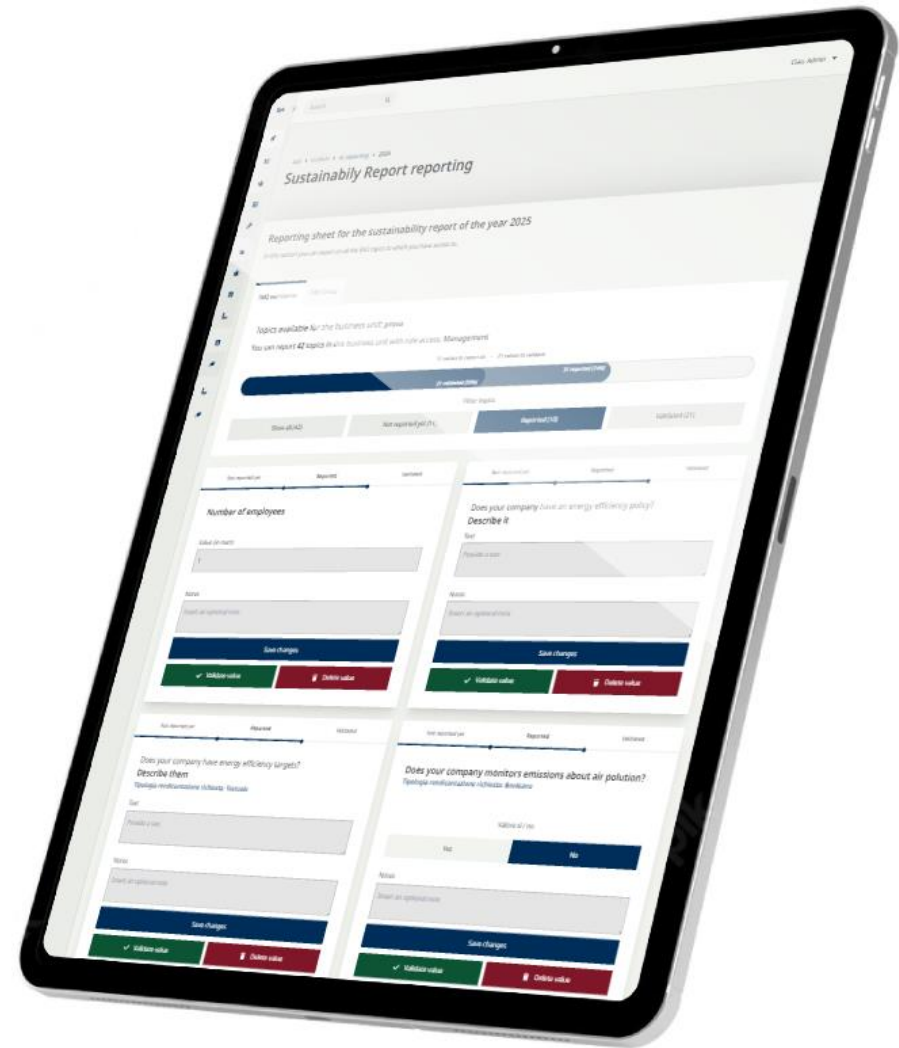


STEP 5

DATA COLLECTION

When data owners report data on the ESG topics, Ipè generates automatic progress and status reports.

Validators users can then view and validate the data.





STEP 6

SUSTAINABILITY REPORT CREATION

Administrators can access the database and the dashboard to have a solid foundation for producing the contents of the report.



Ipè

VEGA Parco Scientifico e Tecnologico | Torre Hammon
Via delle Industrie 5, Marghera (Venice)
+39 041/5093820 | info@eambientegroup.com