



Professional Service Automation

OnePlan's Professional Services Automation is an end-to-end solution that provides service delivery organizations a single system of engagement for sales, resourcing, delivery, and billing. Streamline your delivery with workflows that align with every phase of the customer lifecycle.

Data-Driven Project Management

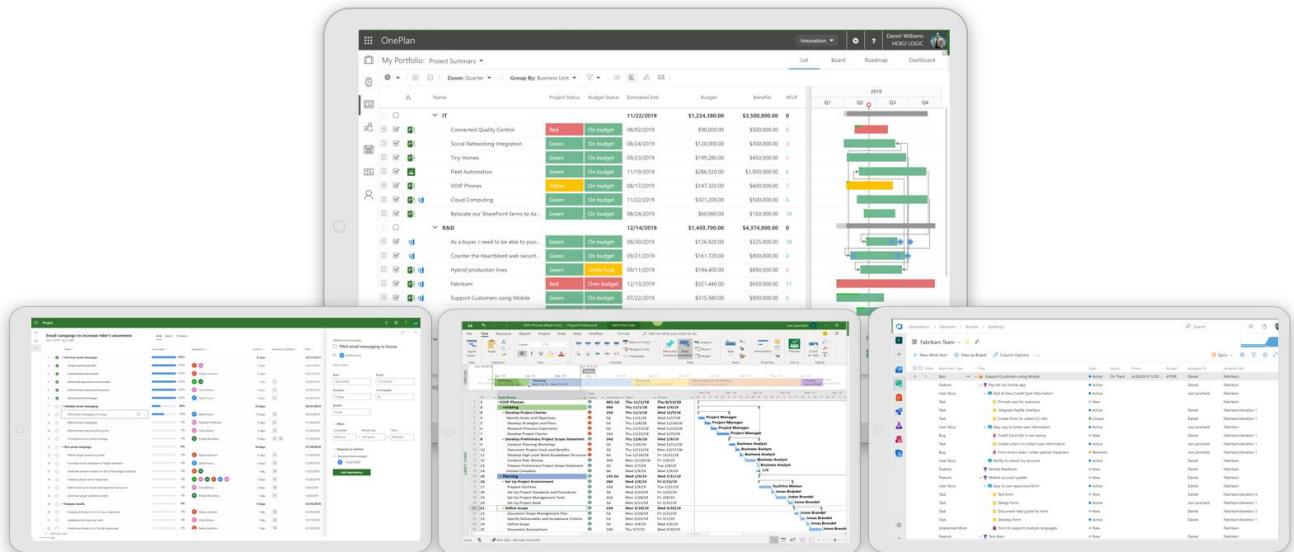
Track real-time project status with ease and empower your teams to identify threats to projects before they happen..

The Right Resources At The Right Time

Find the perfect resource for every engagement to ensure your customers are getting the support they need, when they need it.

A Profitable Business That is Repeatable

Make the right decisions to ensure profits are high and allocation is optimized. Prioritize what matters most and keep clients happy.



Project for the web



Project Professional

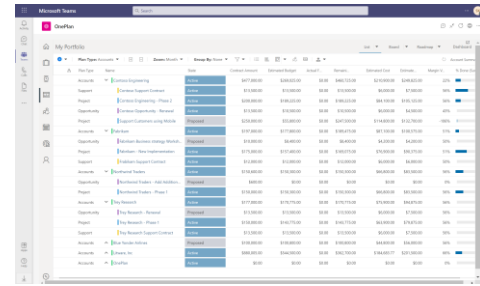
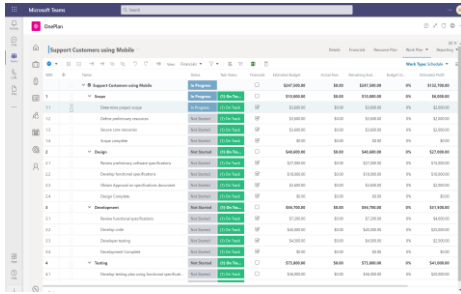


Azure DevOps

OnePlan | Professional Service Automation

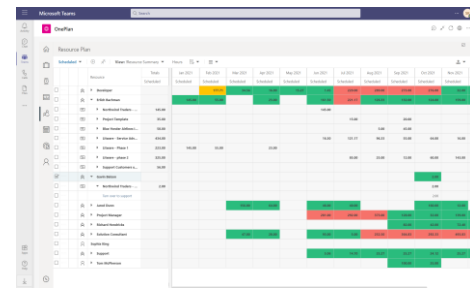
Get Clear Business Visibility by Account

View your projects by account as your business tracks them. Set any attributes and metrics you need to track. Manage delivery, costs, and billing with complete transparency.



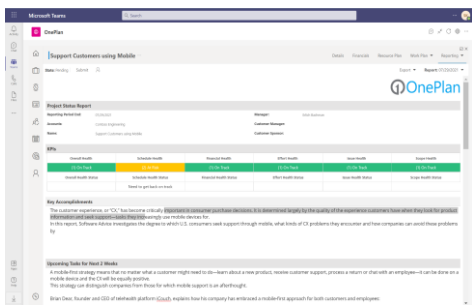
Solve Project Problems Before They Are

Build credibility and trust by providing your customers with real-time, visual dashboards to track every aspect of your project.



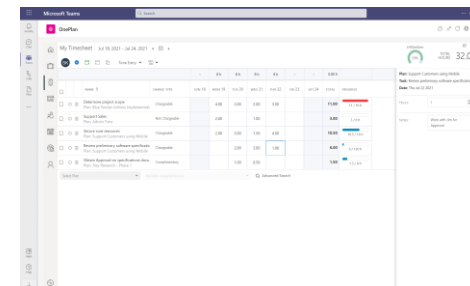
Increased Resource Utilization

Ensure you have the right resources with the right skillsets assigned at the right time for maximum productivity and utilization.



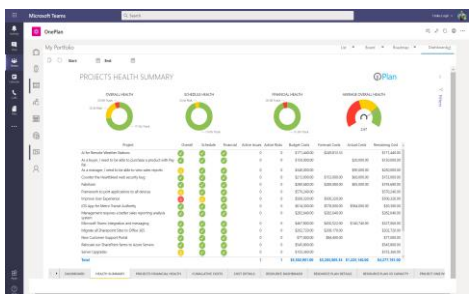
Project Collaboration

The success of your deliverables relies on strong communication and visibility into your project assets.



Leverage Insights into Time Spent

The success of your delivery business depends on effective billing. Estimate more accurately and prevent revenue leakage through bill automation



Business Analytics and Reporting

Empower good decision making through real-time visibility into dashboards and analytics for all aspects of your delivery including tasks timing, risks and issues, resource utilization and financial management.