

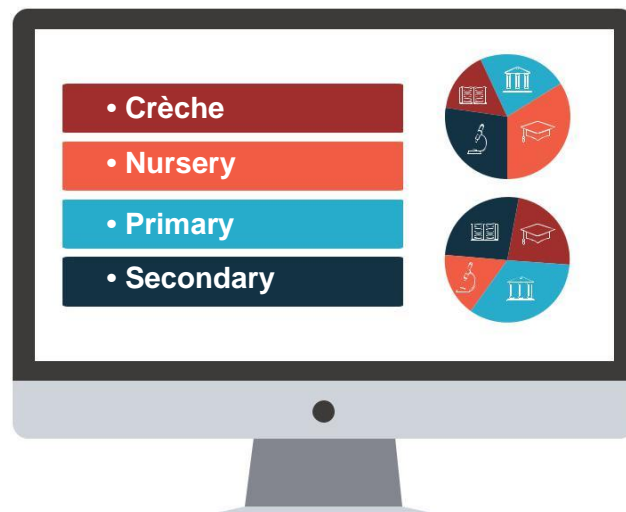


Educ8e is a holistic all web based academic enterprise resource planning system for primary and secondary school that is easy to use, fast to implement and with one of the highest returns on investment and provides access to all the stakeholders-students, teachers, registry, parents, and regulator; integrating admissions, registration, student billing, financial aid, student services and more into a single system that even includes built-in, self-service portals, all operating on a single, secure shared database.



## Admissions

Educ8e automates the entire admission process, pre-checking the inclusion of all required materials including birth certificate, primary school leaving certificate and automatically ranking each student's application based on a number of set criteria. The admission module manages the interaction of prospective student/parent from initial contact, to data gathering to determine the suitability of the candidate for admission. This provides an automated and streamlined admission process platform to assist schools in providing a technology-driven process to find, engage and provide key decision data in enrolling the right student for admission.



## Applicant's Portal

Parents of prospective students engage the institution through this portal. Their parents can create an account or record with an ID and password. Applicants can partially complete and save applications then return to complete and submit when ready. Communication tools enable submission of questions and check back later for answers. If desired, the portal can be configured to require payment of the application fee during submission. All required documents and data are captured electronically through the portal, and the in-built, robust document management system integrate the documents into the prospect file in the database.

## Student's Portal

The student portal provides an intuitive web interface through which the student interacts with Educ8e either through the web or mobile app. Student can register for subjects, track grades performance and submit applications for hostels, scholarships & grants and access other class resources anytime and anywhere there is network access. Student can also view and pay bills from their portal. This portal integrate with teachers and parent portal where they can view and submit their assignments, tests and other assessments online. Communication options with the teacher is expanded through social media and discussion groups.



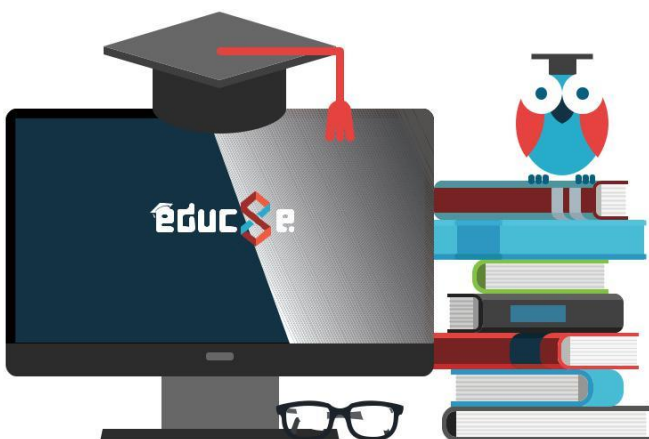
## Academic Plan

The academic planning module is a powerful tool for academic planners to create and review or revise various aspects of the curriculum. The curriculum mapping system promotes collaboration among instructors across programs and subjects in different departments of the school. It provides a structured system in setting up sessions, terms and subjects required for delivery of high quality educational output. It provides a powerful tool to create new subjects and ensure their continual conformity to accreditation requirements of regulatory bodies.



## Student's Directory

It manages the student life-cycle right from the admission stages, maintaining their bio-data, student activities and performance report to graduation. The student is the most important entity in Educ8e as all processes revolve around the student. Data stored in student information systems include uniforms shoes and other wear details of the student which are maintained in their profile to assist the management in procurement processes.



## Teacher's Directory

The teacher portal maintains the personal information of the teachers, subject taught, specializations, education, job history and other biographic details and it integrates directly with the human resources management system where it is available or the data can be warehoused directly in the teacher directory. Interaction with the Teacher's Directory is through the Teacher portal.



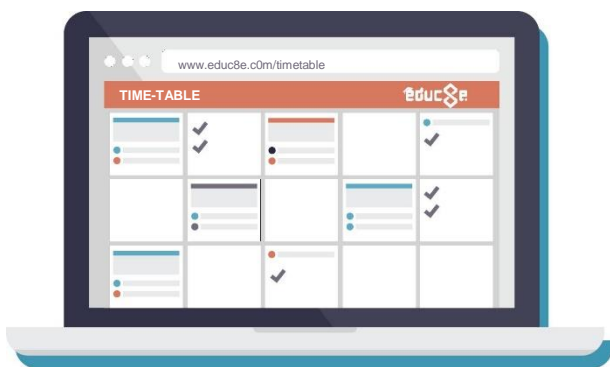
## Teacher's Portal

The Teacher portal enables the teacher to have access to the required modules of Educ8e and interact with students, school administration and parents. Teacher portal makes life simpler by automating routine tasks and giving the teacher powerful tools to make the education process more engaging for students. It also simplifies and encourages teachers' communication with students and parents. Assignment posting, uploading of grades, attendance, student advisement and a host of other activities are carried out through the portal.



## Time-Table

This module helps in the proper planning and scheduling of all school subjects. The creation and management of timetables for all classes and sections taking into consideration the academic workload of each subject and available resources. It ensures that the required content is covered within the given term. Based on the result of academic planning, the subject workload and topics breakdown with the corresponding hourly requirement are used in the creation of timetable schedule for each subject class and section. The timetable for each class of students and teachers are generated and published both in the student and teacher portals. This module seeks to allocate time and venue to each subject depending on its category i.e. science, arts or commercial.



## Parent's Portal

The parent portal enables parents/guardians or sponsors to have access to important data and alerts about their wards. It is a known fact that parental involvement is a vital factor in student success. The dashboard provides an overview of the important metrics and provides links to other functionalities. This helps parents monitor their ward's progress, stay organized and track assignments. The parent portal provides parents and guardians the required tool to keep abreast of their wards KPIs that are important for their overall success.



## Attendance

The attendance module provides optional alert setup for parents to track their ward's attendance at school either by SMS or Email. Their counsellor also receive similar alerts.



## Assessment

The assessment module provides tools where teachers can setup class assignments and tests thereby eliminating errors, while bringing transparency to the various assessment processes. Each parent can see all their wards tests, assignments score and performance on the portal without having to approach the teacher directly thereby eliminating possible harassment by either teacher or parent. Future upgrade will empower the teacher to create eLearning contents directly. The assessment module can interface with standalone LMS (Learning Management System).



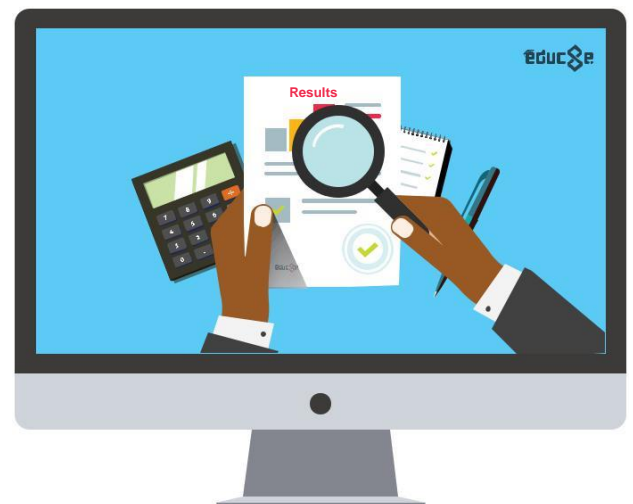


## Results

This module manages result processing with built-in degree audit system that tracks student progress and ensures compliance with each class's requirement in relations to grades for subjects and class attendance. The result module helps in managing results effectively. Based on set grades, educ8e generates result sheets for students of each class and section. The result of tests, assignments and laboratory exercises uploaded by the teacher through their portals are aggregated by the result module for verification and approval by the authorities as defined in the school's workflow. The parent/guardians can also access the result page on their portal but cannot edit it.

## Examination Management

The Examination Management module helps to draw up examination timetable for each class and section, taking into account a number of different constraints such as exam conflict and resources management. This module assist in integrating the timetable of various classes running by different sections, managing seating arrangement of thousands of students, invigilators allotment for exam duty and question paper set wise distribution. This module aids schools to conduct flawless examinations with minimum effort and speeds up the results declaration process.



## Finance

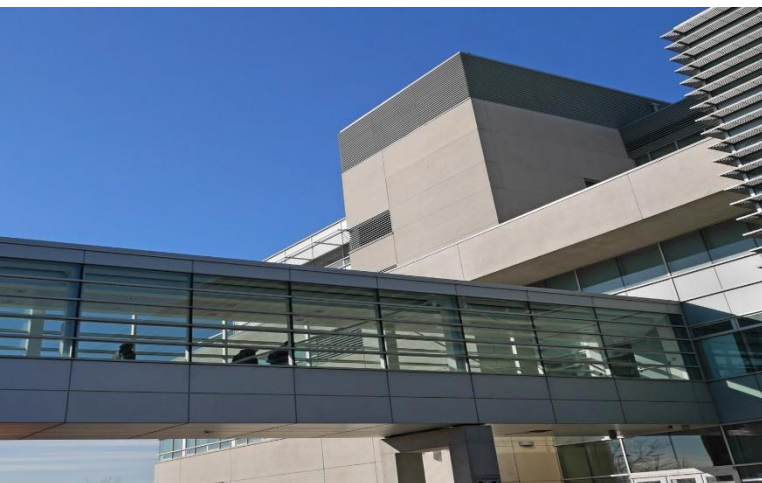
The Finance module assist school's generates and send bills to parents. Parent can also pay directly from their portal through many channels such as; debit card, bank and payment gateway provided by the school. It is also tightly integrated with Sage ERP to provide full financial disclosure, accountability, integration of financial and accounting information with increased transparency, accuracy, and efficiency. The financial module manages the very important economic fulcrum of schools. The students being the only "customer" and major source of revenue needs to be accurately billed at the beginning of each term or session. Its integration with Sage ERP enables holistic management of the student and the school business process on a single integrated platform.

Educ8e in its integration synchronize data with companion modules in Sage ERP like human resources, asset management and financials to provide a holistic information management system.



## Hostel

The hostel module helps in managing hostel buildings, rooms, units, porters and all associated parts effectively. Hostels are identified and separated from available facilities in the school. The type and cost of each hostel is defined for effective management. Contrary to the stressful manual allocation of rooms, hostel module allocates rooms to students based on predefined parameters. Integration with the students/parent portal ensure fair and stress free room application and allocation management.



## Facility Module

The Facility Management module assists in managing all facilities owned by a school. This involves buildings, facilities, equipment and plants. It identifies and codes all the items in an asset table. Where a fixed asset register is available, the module imports all the buildings, equipment and plants categories. Buildings are decomposed to their respective floors and basic utility units. Each unit of a building is associated with the equipment and plants they contain. The module warehouses the following registers: building, units and equipment and their contents that are also fixed asset items. The built-in help desk allows parents and teachers to lodge complaints about broken equipment and services and enable the maintenance unit generate work orders to technicians and vendors where such are outsourced.

## Library

The Library Management Module maintains complete data for books/magazines, newspaper, issue and return of books, fine management and generation of dues and reports. This module helps to manage print materials like books, journal, magazines, etc. It maintains register, books catalogue, books purchased list, etc. This module allows you to manage the entire library through its simple and interactive way. It becomes easy for the librarian to manage all the items details (like author name, edition, publishers, language, etc.) and it tracks all the books issued to staff also. You can also easily maintain fine for books being late deposited or returns.



## Disciplinary

The Disciplinary module simplifies the difficult and time-consuming task of tracking student behaviour and helps improve discipline by ensuring that students are held accountable for their actions. This helps to keep track of disciplinary incidents, maintain related records, notify parents of infractions, and produce reports, notices, forms, and other documents. This module provides a robust and flexible incident tracker of all misconduct by both students and teacher and the measures taken by the school to address reported issues.



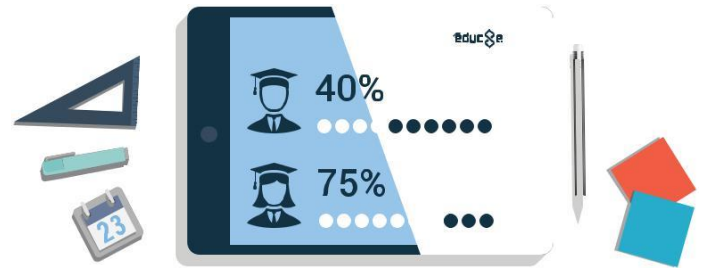
## Reports & Business Intelligence

An enterprise reporting platform based on open Report Definition Language (RDL) for all the modules in Educ8e. It includes an intuitive drag-and-drop-powered report designer application for visually composing reports and a web server application for sharing reports. It warehouses standard reports for all the Educ8e modules and in addition allows end-users to design additional custom reports based on their specifications and requirements. The built-in business intelligence tools empower institutions management to interact with the system through intuitive dashboards with data visualization enabling data informed strategic decision making.



## Student Registration

This module helps in having a well-structured registration process for student while keeping the teacher, school counsellor and administration fully informed. The module manages all the school's range of subjects; tracking pre-requisite requirements and subject conflicts in real time thus ensuring efficient and timely registration.



## Alumni Portal

The module helps in having enables schools to nurture and manage their alumni network, by facilitating engagement, community building, networking and communication. Graduating student's data is automatically enrolled in the alumni database inheriting their login credentials from their student/parent portal. Through the alumni portal, alumni are encouraged to update their details information including biographical data with photographs, career information, email address and contact details. Various groups are supported based on teacher or other interest group.



# E-Wallet

E-Wallet (Electronic wallet) frees the school and parents from the problem associated with handling cash in schools with high risk of theft. The school issued ID card is an all-inclusive card providing both identification and credit card functions. E-wallet allows parents to credit their wards with funds based on the school approved limit for school-related purchases such as cafeteria, art supplies, bookstore, snacks, ticket sales and any other items offered within the school's premises. Parents have access to important information and alerts about their ward's spending habit that might require their intervention and input. It is also a great money management teaching tool for the students.

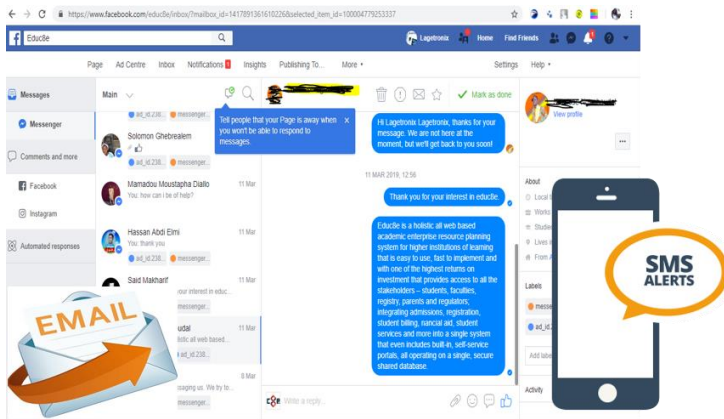
# Transportation

Parent can register their kids for school's transport and know the scheduled time and bus with assigned route. The bus driver is allocated a portal where he/she can see details of students assigned for pick-up and drop-off. Similarly, guardian have access to the bus details. The school transport manager can allot and track buses and their drivers. This is time saving and provides security checks thereby putting parents mind at peace about their wards.



# Communication

This module is responsible for generating alerts and notifications to students, teacher and other entities. It supports the following channels: Email, SMS & Facebook messenger. It disseminates information to all the stakeholders – Parent, Teacher. It is a service tool to all the other modules within Educ8e to provide bidirectional communication to users in their respective portals and other interested parties.



# Inventory

For Schools that procure and allocate books, magazines and other resources to students, the inventory module in educ8e manages the issuing process and track which students have received allocation.

The module is tightly integrated with Sage 300 where the inventory locations and items procurement are managed. It enables proper forecasting of required items based on the student population for each subject. Inventory receipts, shipments, returns and adjustments are managed directly from the ERP.



+2348022907805, +2348095604025  
www.educ8e.com, sales@educ8e.com



Gold Application Development  
Azure Cloud Solution Provider



Business Partner