

# BITSCAPE

GLOBAL C<sup>3</sup>  
CLOUD • COLLABORATION • COMPLIANCE

Microsoft  
Preferred  
Microsoft 365  
Business Applications

We are Cloud,  
Collaboration &  
Compliance Expert

info@bitscape.com

USA | Canada | India

www.bitscape.com



## SharePoint

We strive to provide world-class IT consulting services to our customers by hiring only Microsoft Certified Professionals with considerable years of experience in deploying, managing and supporting Microsoft SharePoint Solutions.



## Power BI

We help you in developing end to end solution which is tailor-made to suit your business needs.



## Power Apps

Engage the right experienced, expert and certified Microsoft partner today. We assure best results, improved performance and reduced cost for your organization.



## Microsoft Flow

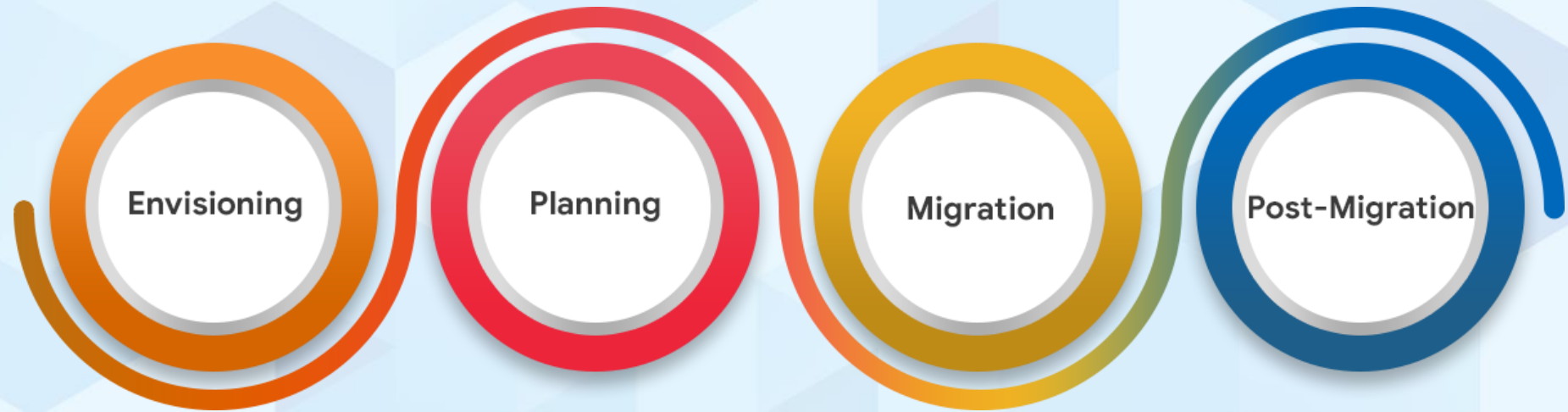
Allowing smooth integration with Microsoft apps and services, Flow can be used in sync with Power BI, PowerApps, Dynamic 365 and Office 365.

# Migration Approach

Azure

SharePoint

Office 365





## Secured Enterprise Collaboration System and Document Management System

Microsoft  
Partner



2017 Partner of the Year Finalist  
Public Sector: Government Award  
Data Platform Award



# Mission Critical LoB/SaaS application hosting on Azure

Microsoft  
Partner



2017 Partner of the Year Finalist  
Data Platform Award  
Public Sector: Government Award

# BITSCAPE








Helping you meet performance, security and reliability along with industry regulatory compliances with Azure powered mission critical SaaS application hosting, both for internal consumption or customer subscriptions.

Some of the Regulatory Standards: SOC1, SOC2, SOC3, CJIS, FDA, HIPPA, CFR21 part 11, FISMA, FedRAMP; PCI DSS  
Industries : Manufacturing, Banking, Pharma, Government, Public Listed Companies



# Global Head Dashboard

## Mobile View PowerApps

Comments			+
	<p>Posted On 2019 - 02 Testing Of Global By 4.30 AM..</p>	<p>Posted On 8/19/2019 5:09 PM</p>	>
	<p>Posted On 2019 - 05 Use the Rename Columns function to rename</p>	<p>Posted On 8/14/2019 11:52 AM</p>	>
	<p>Posted On 2019 - 04 3:30 PM Data refresh testing</p>	<p>Posted On 8/2/2019 3:24 PM</p>	>
	<p>Posted On 2019 - 07 6:00 testsinafd</p>	<p>Posted On 8/14/2019 4:58 PM</p>	>
	<p>Posted On 2019 - 01 Comments for 2019-01</p>	<p>Posted On 8/20/2019 4:56 PM</p>	>
	<p>Posted On 2018 - 08 Comments 2018-08</p>	<p>Posted On 8/20/2019 5:12 PM</p>	>
	<p>Posted On 2018 - 06 Comments 2018-06</p>	<p>Posted On 8/20/2019 5:13 PM</p>	>

# Apply Leave-bot in Microsoft Teams

Microsoft Teams

Search or type a command

BITeamwork

Conversation Personal Timesheet **Leave Dashboard** Apply Leave About

### Dashboard

AS

#### My Leave Balance

Casual Leave	Sick Leave	Privilege Leave	Optional Leave
<b>2.00</b>	<b>1.00</b>	<b>0.0</b>	<b>0.0</b>

#### My Leave Status

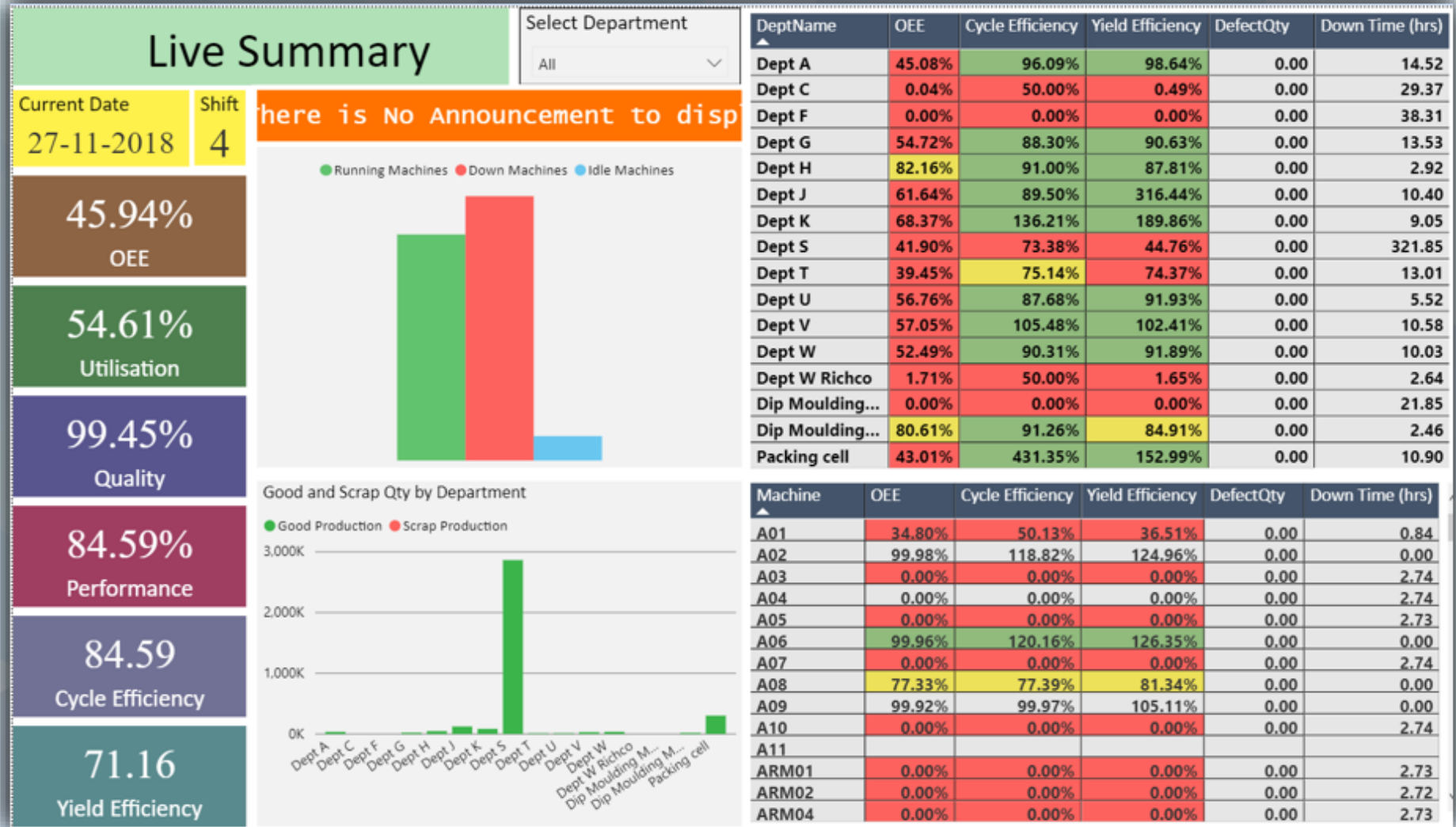
Start Date ↕	End Date ↕	Reason ↕	Status ↕
--------------	------------	----------	----------



# Timesheets in Microsoft Teams

The screenshot displays the Microsoft Teams web interface. At the top, the browser address bar shows the URL: `teams.microsoft.com/_#/apps/d49b247e-e75e-442e-bcd5-f2f75f9573f2/sections/conversations?slug=28:3556e2cd-8c5d-4925-b035-a98d3fa04aca`. The Teams header includes the logo, a search bar, and a user profile icon. The left sidebar contains navigation icons for Activity, Chat, Teams, Calendar, Calls, Files, Apps, and Help. The main chat area shows a conversation with a bot named "biBot". A message from the bot at 9/4 4:49 PM contains a form for "Apply Leave". The form fields are: "Leave Type" (dropdown menu), "From" (date field set to "Apr 9, 2019"), "To" (date field set to "Apr 9, 2019"), and "Reason" (text input field). Below the form are "Submit" and "Cancel" buttons. A "Test Card" is visible below the form, and a text input field at the bottom of the chat area contains the placeholder text "Type your questions here".

# Production Summary (Live Data) with PowerBI



# Production Machine Status (Live Data) PowerBI

Machine Status													Current Date		Shift	
													27-11-2018		4	
													64		77	7
													Running Machines		Down Machines	Idle Machines
Dept A	Dept C	Dept F	Dept G	Dept H	Dept J	Dept K	Dept S	Dept T	Dept U	Dept V	Dept W	M/C 1	M/C 2	Packing	Other	
A01	C01	F01	G02	H00	J04	K01	S01	T03	U03	V01	Trials	ARM01	ARM09	PACK	Neptun	
A02	C02	F02	G03	H01	J05	K02	S02	T04	U04	V02	W0	ARM02	ARM10	PACK 1	W06	
A03	C03	F03	G04	H02	J06	K03	S03	T05	U05	V03	W01	ARM03	ARM11	PACK 2		
A04	C04	F04	G05	H03	J07	K04	S04	T06	U06	V04	W02	ARM04	ARM12	PACK 3		
A05	C05	F05	G06	H04	J08	K05	S05	T07	U07	V05	W03	ARM05	ARM13	PACK 4		
A06	C06	F06	G07	H05	J09	K06	S06	T08	U08	V06	W04	ARM06	ARM14			
A07	C07	F07	G08	H06	J10	K07	S07	T09	U09	V08	W05	ARM07	ARM15			
A08	C08	F08	G09	H07	J11	K08	S08	T10	U10	V09	W07	ARM08	ARM16			
A09	C09	F09	G10	H08		K09	S09	T11	U11	V10	W08					
A10	C10	F10	G11	H09			S10	T12								
A11	C11	F11	G12	H10			S11									
A12	C12	F12	G13	H11			S12									
A13	C13	F13	G14													
A14	C14	F14	G15													
A15																

Down Reason	No of Down Machines
alarm	70
A/W S/UP	5
AIR	2
TOOL REP	2

Machine	Down Time	DownCode
A01	00:50	alarm
A03	2:46	A/W S/UP
A04	2:46	TOOL REP
A05	2:46	AIR
A07	2:46	alarm
A10	2:46	A/W S/UP
<b>Total</b>	<b>194:00</b>	

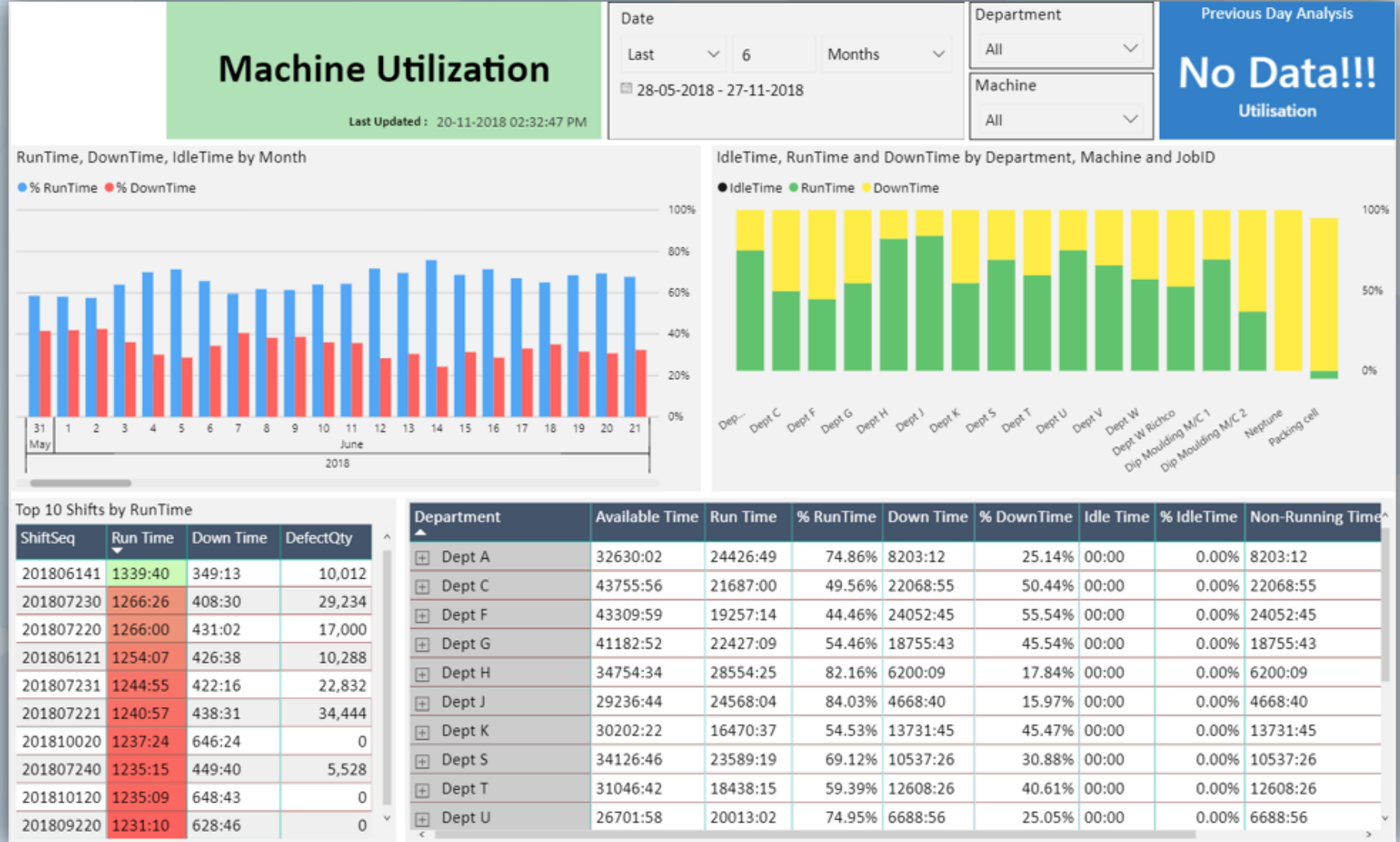
  

**Running Machines** ■

**Down Machines** ■

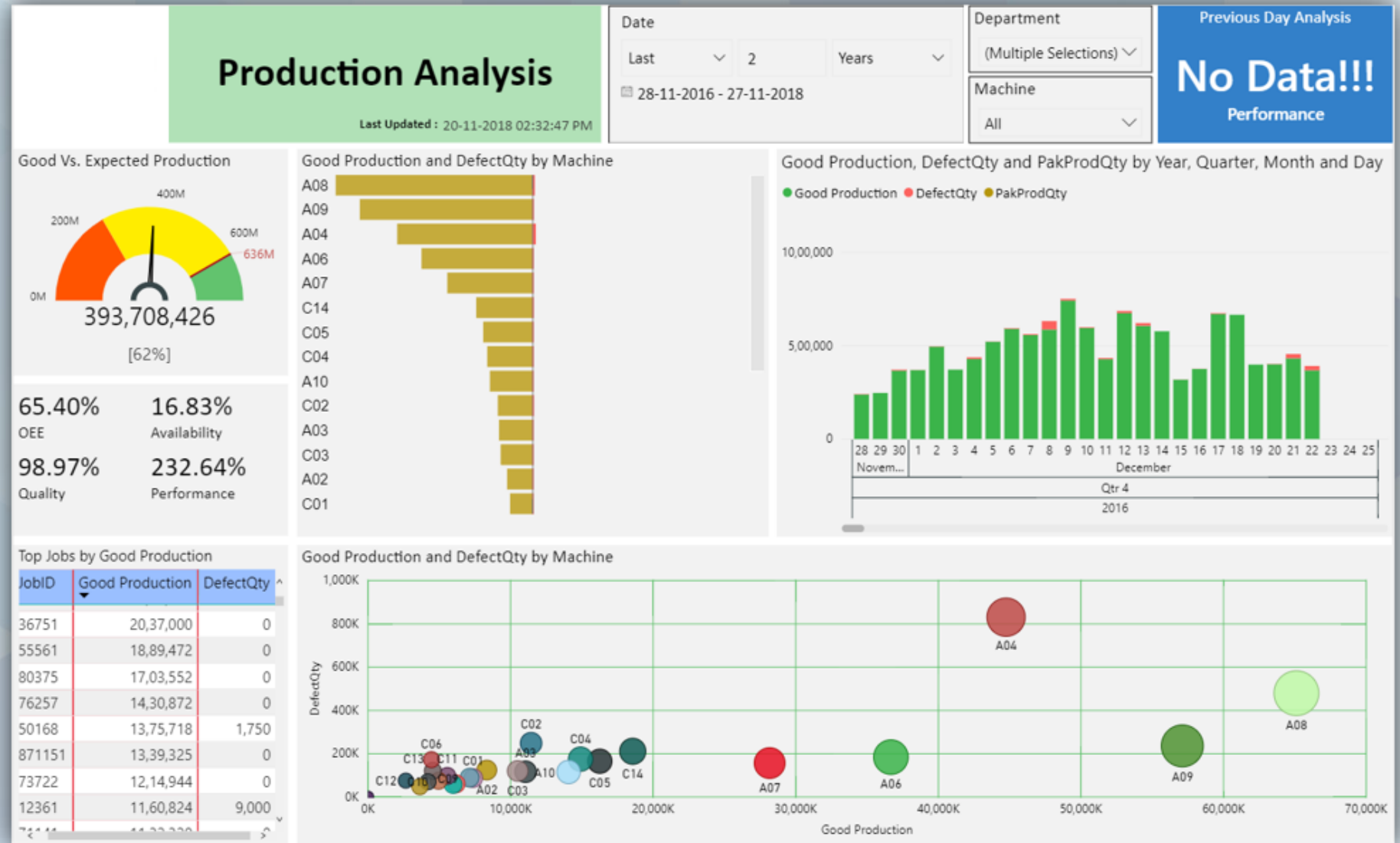
**Idle Machines** ■

# Machine Utilization PowerBI



# Production Analysis

## Power BI



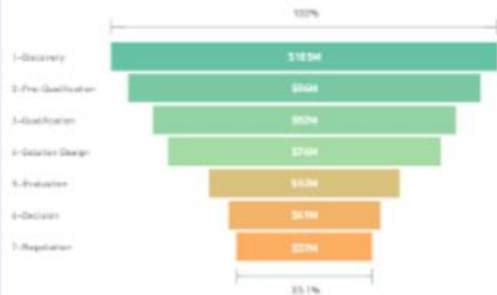
# Sales Dashboard

## Pipeline Report

Actual vs. target revenue (\$)



Opportunity value by pipeline phase



Opportunity expected to close vs. target this month



## Sales Performance

Variance to target sales



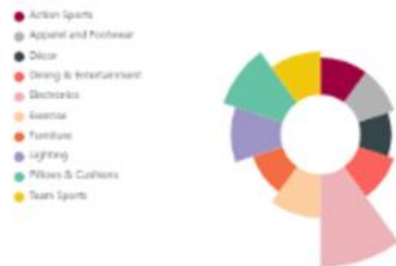
Actual margin

15.0%

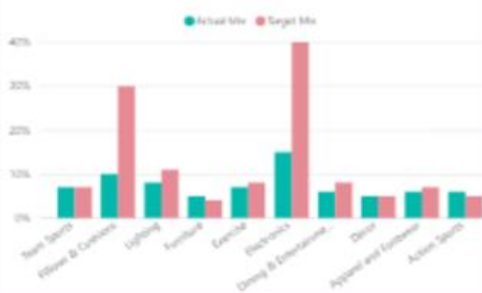
Target margin

16.0%

Actual category mix



Planned vs. actual category mix



## Quota

Average sales (\$)

\$48.50M

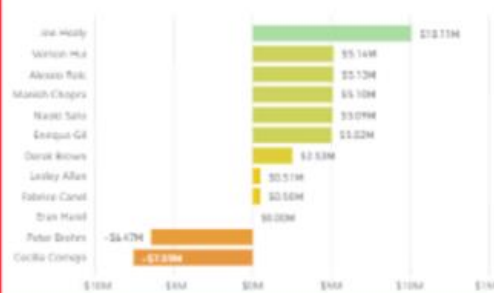
Average quota (\$)

\$50.69M

Countries not meeting quota

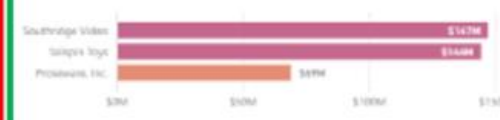


Variance to quota by account owner

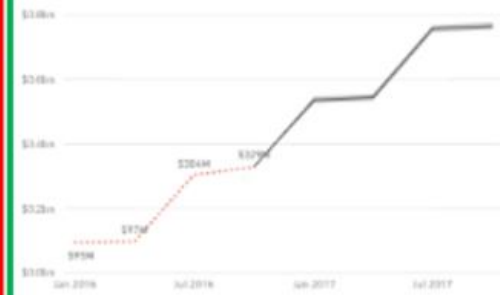


## Trends

Top accounts by YTD revenue FY16



Forecasted revenue



Target revenue, actual revenue by country and account owner

