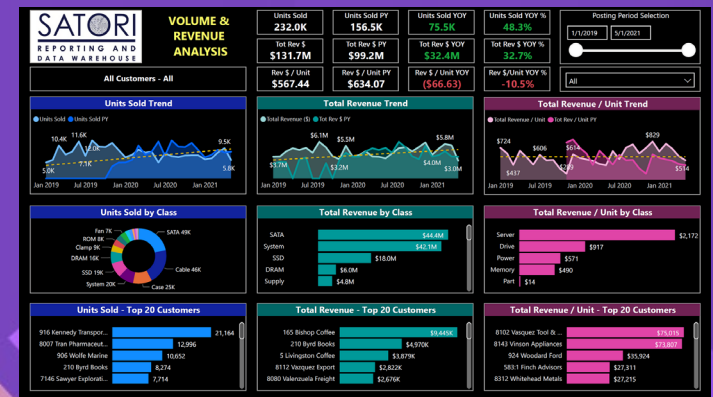
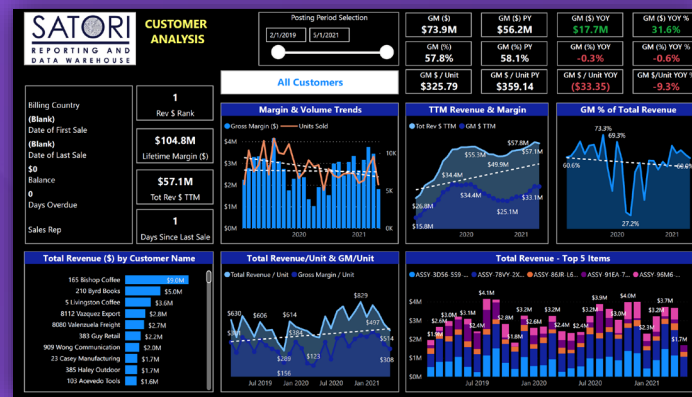
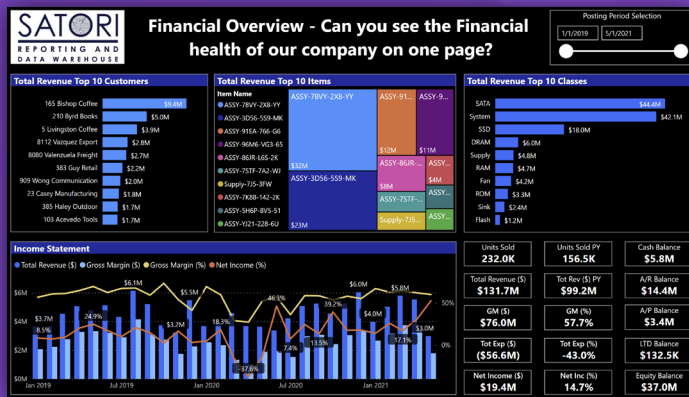




ZoneReporting

PRE-BUILT NETSUITE REPORTING IN POWER BI

ZoneReporting.com



ABOUT ZONE REPORTING

Experience:

Formed by NetSuite and BI Experts
Combined 50+ years of NetSuite Experience (100+ implementations)
Combined 100+ years of Business Intelligence Experience

Team:

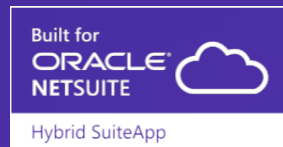
Former Executives in Finance/Accounting, Operations and Technology
Robust Channel of NetSuite Partner Organizations that are Satori Certified for additional Consulting Expertise

Clients:

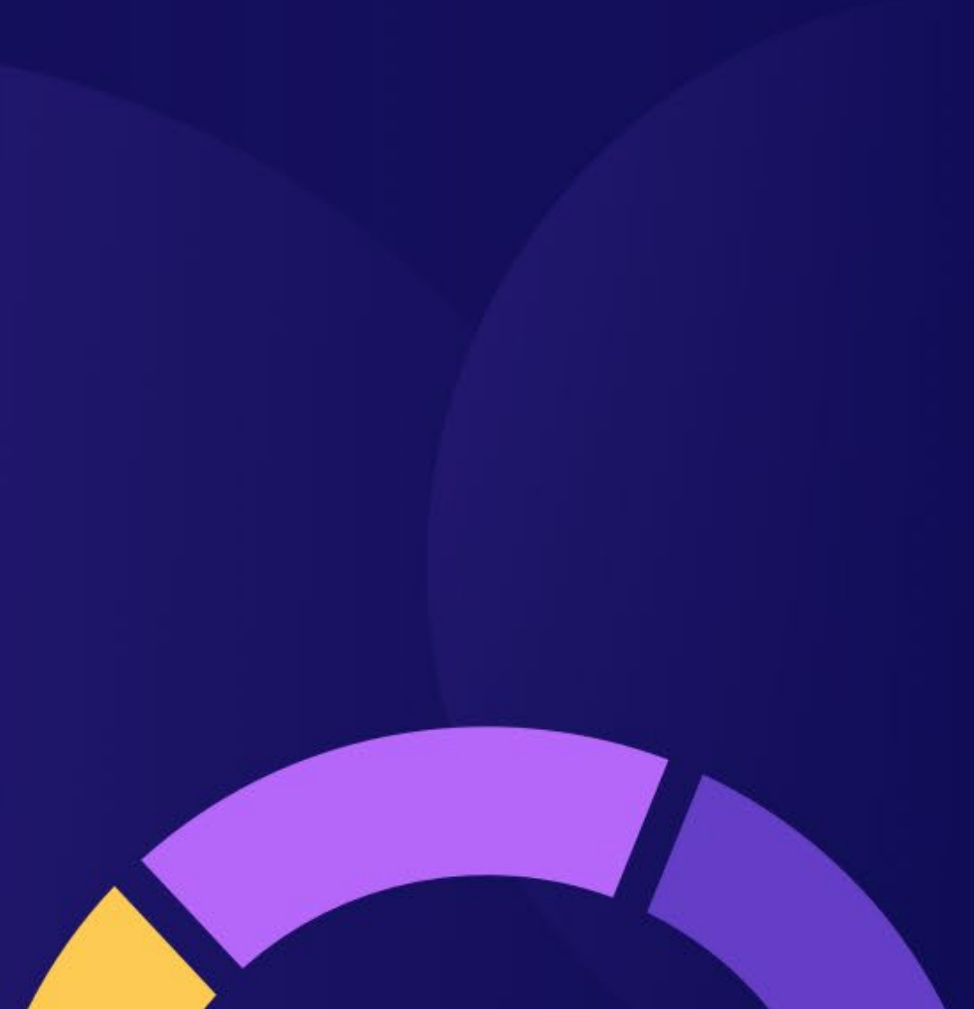
150+ NetSuite Customers on ZoneReporting
\$5M to \$10B in Revenue
Private, Public & PE/VC




CERTIFICATIONS / VERIFICATIONS:



ZONE REPORTING DIFFERENTIATORS

1. All Your Data/Unlimited Joins
 2. Single Enterprise-Wide Reporting Platform
 3. Advanced Analytics
 4. Reporting Automation
 5. Data Back-Up
- 

ZONE REPORTING DIFFERENTIATORS

1. All Your Data/Unlimited Joins 
2. Single Enterprise-Wide Reporting Platform
3. Advanced Analytics
4. Reporting Automation
5. Data Back-Up

ZoneReporting supports unlimited joins (NetSuite does not)

See your business results end-to-end to get the full story of your performance

ZONE REPORTING DIFFERENTIATORS

1. All Your Data/Unlimited Joins

2. Single Enterprise-Wide Reporting Platform →

3. Advanced Analytics

4. Reporting Automation

5. Data Back-Up

Join data from all your data sources for one version of the truth reporting

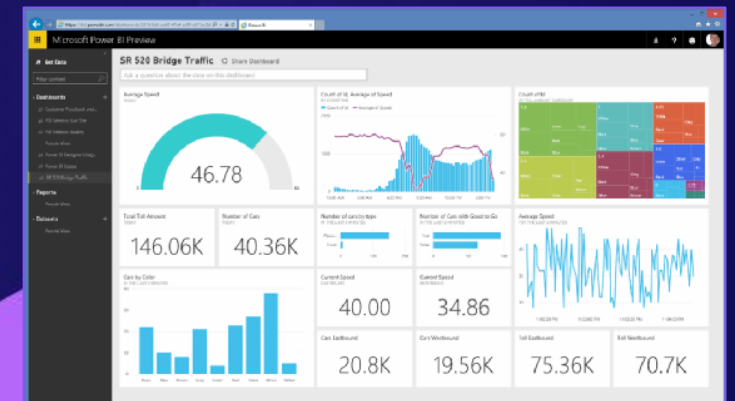
REPORTING CAPABILITIES:

- Financial Reporting
- Operational / Department Reporting
- Month-End Reporting Packages
- Reports for Individuals without NetSuite Licenses
- Excel-Based Reporting
- Mobile

350+ Pre-built Connectors
INCLUDING:



Historical
Data



ZONE REPORTING DIFFERENTIATORS

1. All Your Data/Unlimited Joins

2. Single Enterprise-Wide Reporting Platform

3. **Advanced Analytics**

4. **Reporting Automation**

5. **Data Back-Up**

“Solve for Specific Business Problems/Questions”

- Inventory Historical Snapshots & Forecasting
- True Gross Margin (i.e. Sales Order)
- Cash-Flow Forecasting
- Predictive Analytics/Machine Learning

Reduce Time Spent Preparing Reports up to 100%

Protect Your Business From Experiencing a Business Interruption

NS = 60 days vs Satori = 365 days

WHAT IS ZONE REPORTING FOR NETSUITE?

| WHAT'S INCLUDED | DETAILS |
|---|---|
| NetSuite Connector | <p>Automated process for exporting NetSuite Saved Search Data</p> <p>Automated data refresh: Daily or Throughout the Day</p> |
| NetSuite Common Data Model | <p>Pre-built NetSuite data model with the full enterprise grade ETL processes. The key data model features are:</p> <ul style="list-style-type: none"> • 100% of Your NetSuite Transactions @ Line Level • All of Your Key NetSuite Record Types • Time Dimensions/Time Intelligence • 100's of KPIs/measures • Transaction Level Detail with Links Back to NetSuite • Google Analytics & Adwords |
| Dashboard/Report Starter Pack (50+ pre-built) | Starter pack of prebuilt reports (Income statement, financial overview, budget vs actual, customer analysis, etc.) |
| Embed PowerBI Dashboards in NetSuite Portlets | Ability to embed and interact with PowerBI dashboards in NetSuite portlets |
| Budget/Forecast Import | Ability to import and report across unlimited budget/forecast versions via a standardized import template |
| Power BI Training | Power BI/ZoneReporting Training for your Team: On-demand video library + a 4-hour hands-on custom report building workshop |

2 – 4 weeks average implementation & value on day one!

ZONE REPORTING IS PRE-BUILT BI:

