

Sustainability Consulting Services – Solution Implementation

Caring for Environment by Deploying Sustainability Digital Solution at Scale

MARCH 2023

The Business Imperatives



Manufacturing & Consumer Goods Enterprise



Brand, Reputation & Business Viability

- Improve Product marketability & Long-Term Business Viability

Operational Efficiency

- Energy, Water, Waste & Emission Management



Future Ready

- Emerging Areas as Climate Risk Assessment, Life Cycle Assessment & Value Chain



Customers

- Becoming more conscious about sustainable Products & Practices
- No Greenwashing



Regulatory

- Regulatory Mandates becoming stringent & complex
- High Cost of Non-Compliance & hurts brand image



Shareholders

- Becoming more Conscious about Sustainable Practices
- Zero Non-Sustainable Investments



Society

- Pressure for lower carbon footprint & amount of toxins released to environment

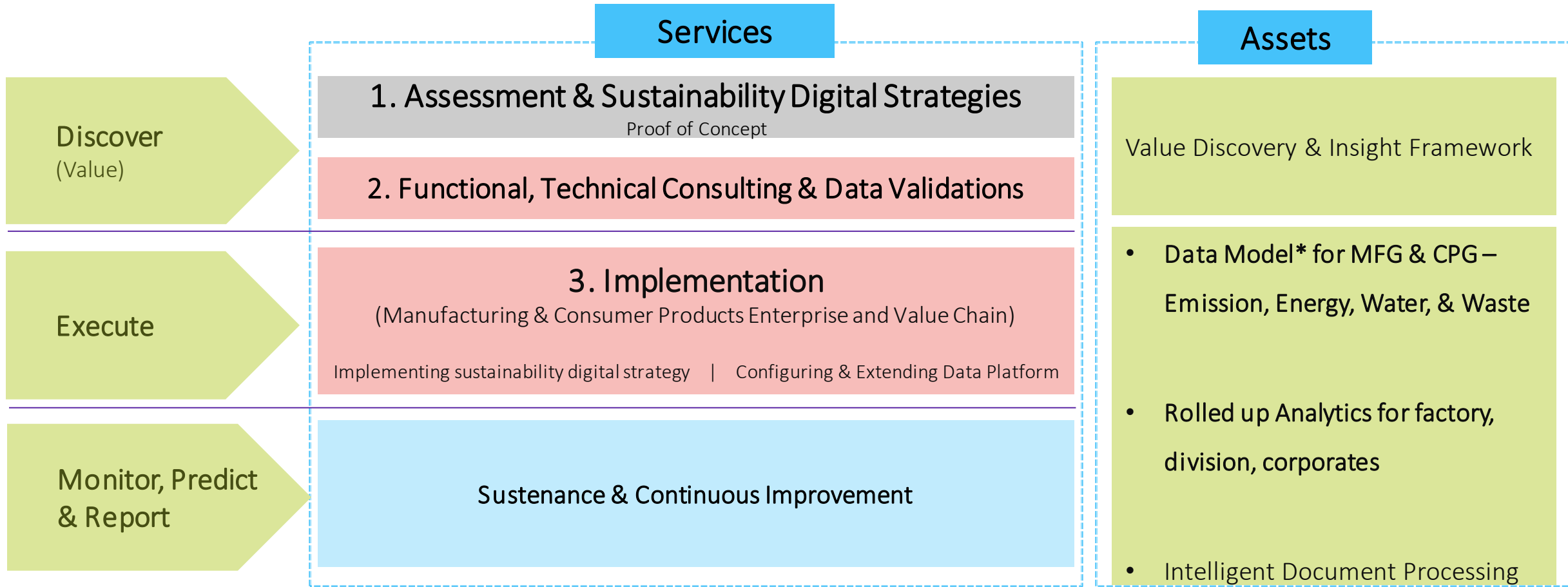


Partners

- Sustainable business engagement
- No ties with organizations at risk



Sustainability Offering



Legend: Consulting Services – Functional/ Technical Consulting & Implementation

Note: Full stack of offering is depicted for completeness

**Standards Compliant (GRI)*

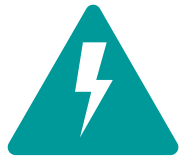
Sustainability Consulting Services Catalog

Service Type	Methodology	Key Deliverable	Typical Timeline*
2 Functional, Technical Consulting & Data Validations	<ul style="list-style-type: none">▪ Understanding & documentation of detailed Functional need and Technology Landscape through Workshops largely onsite▪ Validation on existing Data Quality	Detailed Functional Requirements Specification for Emission, Energy, Water, Waste	4 – 6 Weeks
3 Implementation	<ul style="list-style-type: none">▪ Solution Design & Build executed largely Offshore	Production Version of Solution Solution Documentation – Architecture, Deployment	14 – 18 Weeks

**May vary on case-by-case basis depending on engagement complexity & size*

Consulting Services to Enable Digitalization of Use Cases...

Functional Areas for Sustainability Data Model – Energy, Emission (Scope 1, 2 & 3), Water, Waste, Social, Supply Chain (audit/ assessment/ self declaration – survey based)



Specific Energy Consumption Reduction

Target vs. Actual

Absolute Energy Consumption

% of Energy from Renewable Sources

Target vs. Actual

% of Grid Electricity from Renewable Sources

Target vs. Actual



% Reduction in Specific Water Consumption

Target vs. Actual

Specific Water Consumption

Water Consumption & Discharge

% of Total Volume of Water Recycled & Reused



% Reduction in Specific Emission

Target vs. Actual

Annual Specific Emissions

Absolute Annual Emissions (Tons CO₂ equivalent)

Energy Indirect GHG Emission (Tons CO₂ equivalent)



Specific Waste Generated

Target vs. Actual

Annual Waste Generation

Waste Treatment (Recycle/ Reuse) %

Waste Generation Performance by Business

Note: KPIs depicted are representative & not exhaustive

**Data Traceability/
Auditability**

**Eliminate Data Errors
& Non-Compliances**

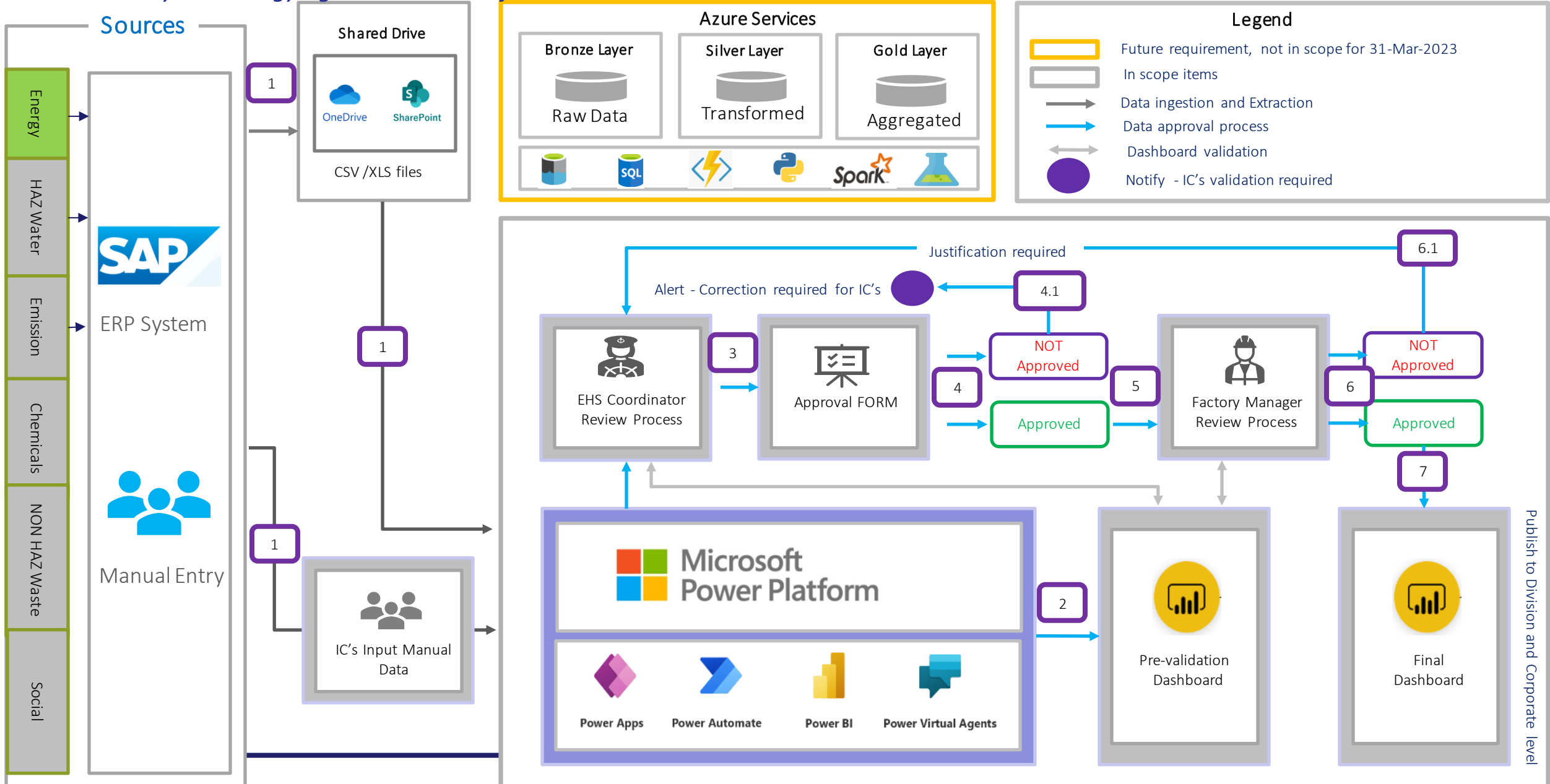
**Agile Analysis &
Reporting**

**Improve Operational
Efficiency**

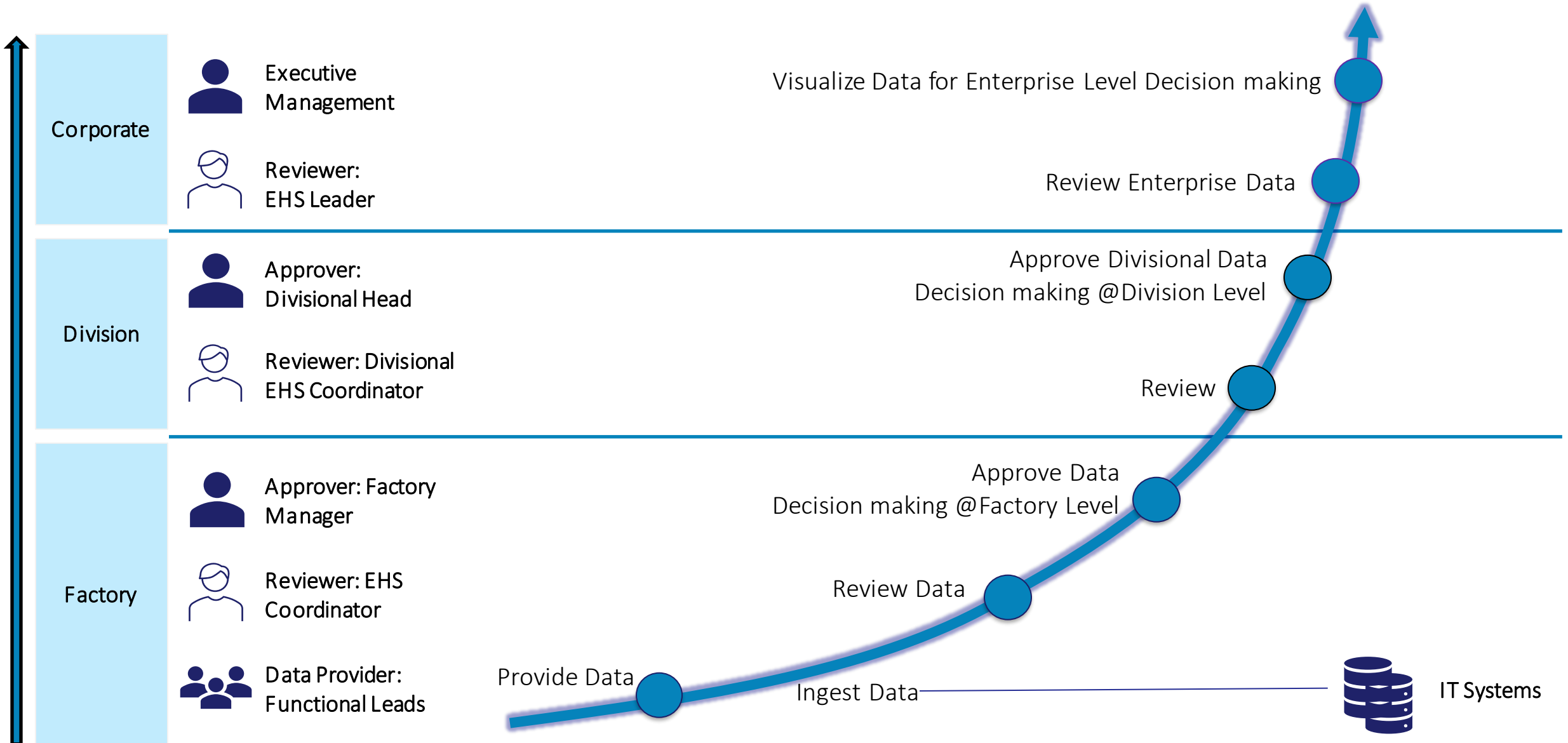
Reference Architecture

"Sustainability Technology agnostic Data Platform" ...

Expected Annual Cloud Consumption Value (ACR): 700-1000K USD



The Overall Process



Why ITC Infotech?

Full Stack Solution

Data Ingestion from Sources

Data Management

Visualizations (Analytics) & Reporting

Feed to Destination Systems

Data Model

From source of data, transformations thru' to consumption

Include functional areas of Energy, Emission, Water & Waste

Industry Focus

Manufacturing (e.g., Industrials, Auto-Ancillary) & Consumer Goods (e.g., FMCG)

Depth of Experience

Easy to roll out to multiple businesses

Extendable to multiple factories/organization units with minimal configuration changes

Support third party audits

Configurable to extend access to external party to audit the data and reports

Reusability & Configurability

Configurable Elements & alignment with Standards

Proof Points

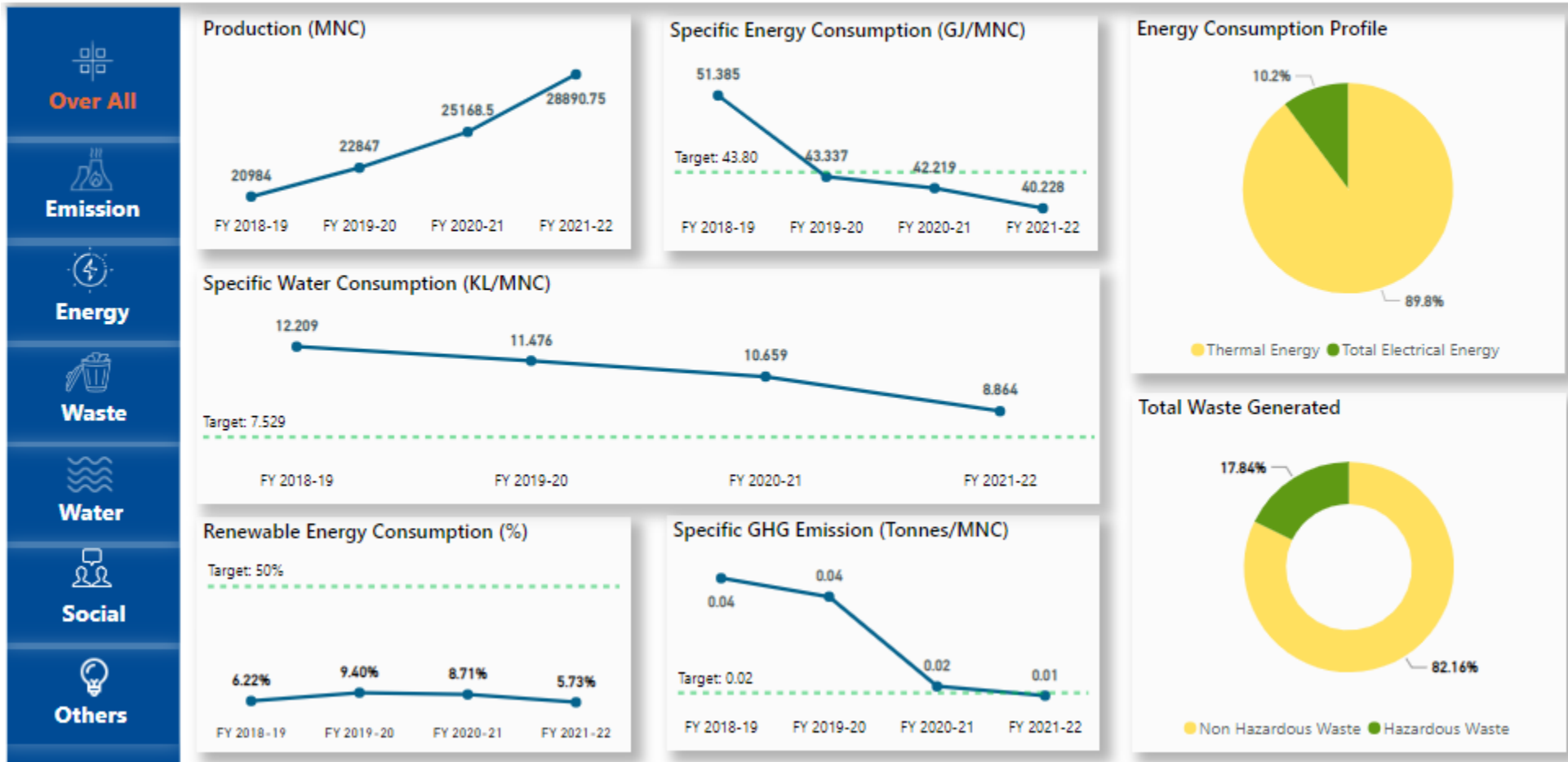
Sustainability Data Platform Snapshot – Overview Dashboard for Factory EHS Lead



Sustainability Performance Dashboard

Division: Tobacco
 Production Area: Tobacco, Bengaluru
 Date: 13-03-2023

Visual Data

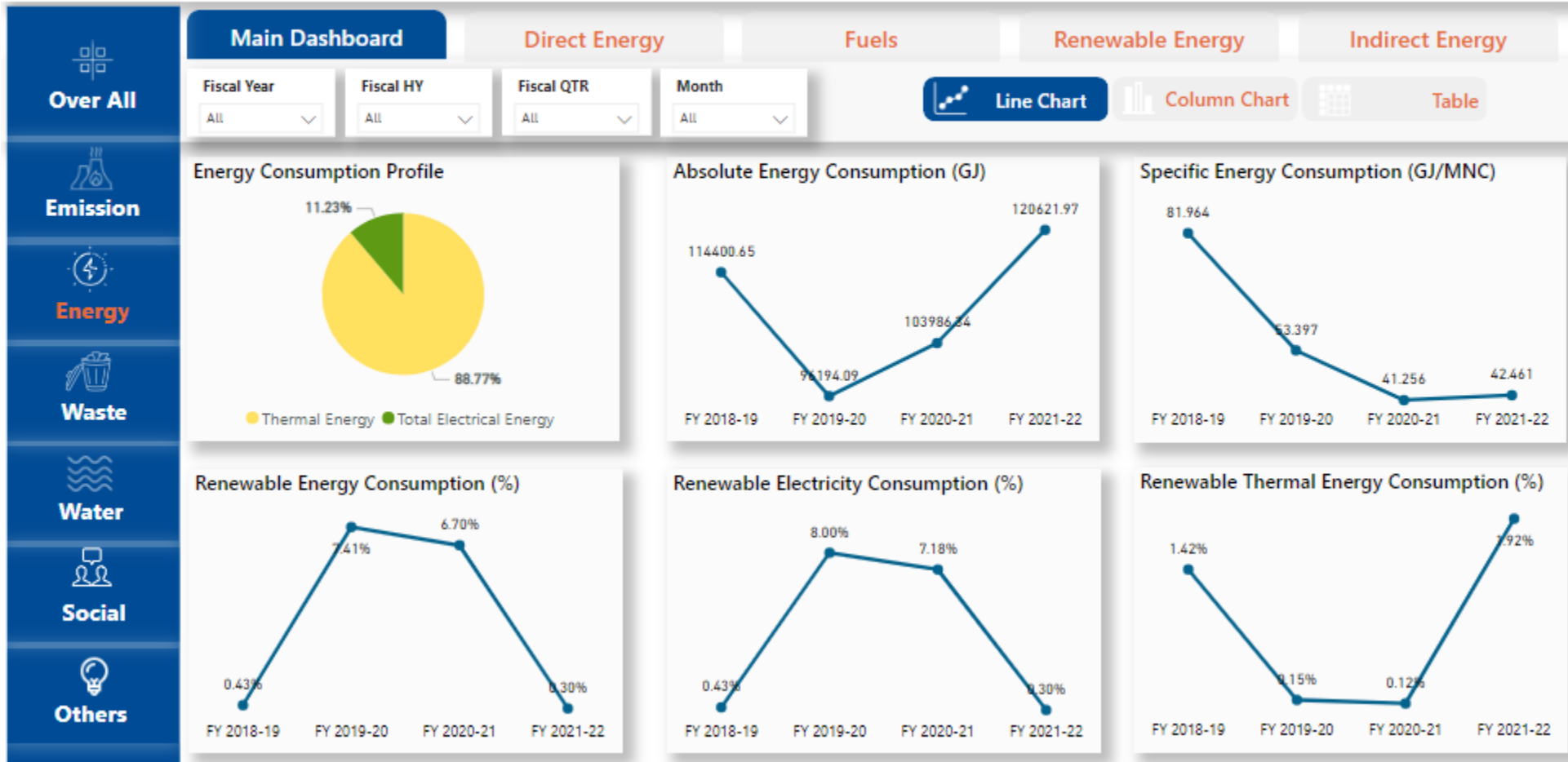


Sustainability Data Platform Snapshot – Energy Dashboard for Factory EHS Lead



Energy Performance Dashboard

Division: Tobacco
 Production Area: Tobacco, Bengaluru
 Date: 13-03-2023

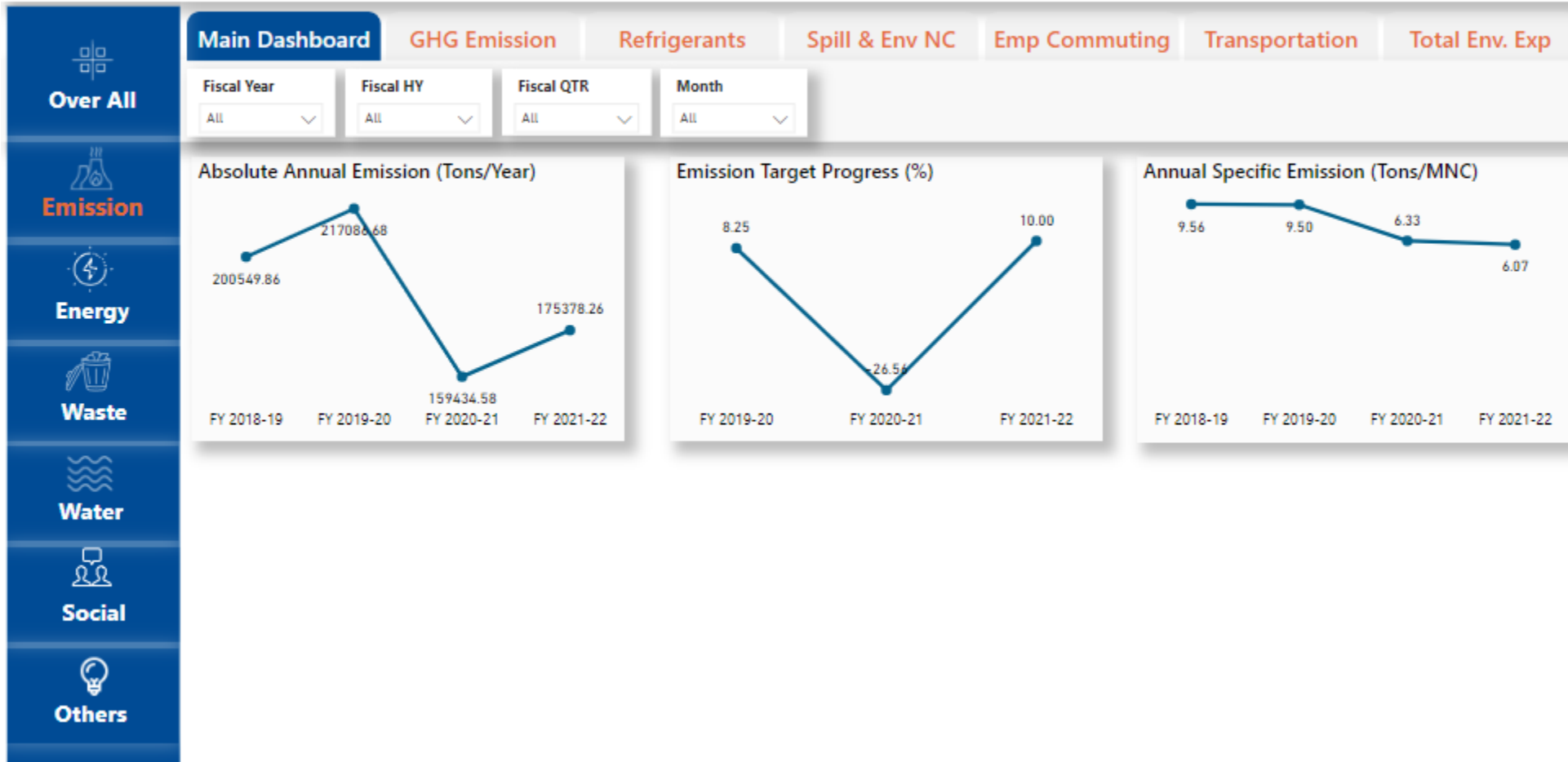


Sustainability Data Platform Snapshot – Emission Dashboard for Factory EHS Lead



Emission Performance Dashboard

Division: Tobacco
Production Area: Tobacco, Bengaluru
Date:13-03-2023



Sustainability Data Platform Snapshot – Approval Dashboard for Factory Manager



Sustainability Performance Dashboard

Division: Tobacco
 Production Area: Tobacco, Bengaluru
 Date: 13-03-2023

Visual **Data**

- Over All**
- Emission**
- Energy**
- Waste**
- Water**
- Social**
- Others**

Factory EHS Coordinator															
Status: All ✓ ✗ FY 2022-23 Year by Year Select All															
Ind	Description	Items	Unit	Decim	Q1	Q2	Q3	Q4	Total	Var(%)	Comment	Item owner	Source	Status	Select
Basic Data/ Assets	Finished Goods	Finished Goods	MNC	0	260	97	173	11	541	-80.5	nono	Sai Anjan/ Kathy	SAP	Factory review Complete	<input type="checkbox"/>
Basic Data/ Assets	Cut Tobacco despatch	Cut tobacco despatch	Tonnes	0	194	130	108	244	676	-5.2	okay	Sai Anjan/ Kathy/Renju	SAP	Functional Review Rejected	<input type="checkbox"/>
Basic Data/ Assets	Converted volume	Converted volume	MNC	0							its was nice	Sai Anjan/ Kathy	BCF		<input type="checkbox"/>
EN1- EN2	Raw Material Consumption to be Reported	Leaf (Lamina +stem)	Tonnes	0							ok	Renju K Kakkattu	SAP		<input type="checkbox"/>
EN1- EN2	Raw Material Consumption to be Reported	HLP	Tonnes	0								Venkateswara Rao Tota	SAP		<input type="checkbox"/>
EN 3-1	Direct Energy Consumption	HSD	KL	3	16.276	10.311	8.764	214.313	249.664	322.9	testing	Govind Singh/Baskaran	SAP & Log Book	DH Review Completed	<input type="checkbox"/>
EN 3-1	Direct Energy Consumption	HSD CPD	KL	3	12.168	8.284	9.423	105.96	135.835	189.1	okay is data	Baskaran	Log Book	Functional Review Complete	<input type="checkbox"/>

Other Proof Points

- FMCG major as Customer Zero for Sustainability Consulting & Solution Development
 - 2 Divisions (Tobacco & Papers) currently in Scope & Under Development
- Other Engagements: ESG Consulting Services & Solution Framework: Sustainability Consulting & Reporting solution for Steel Conglomerate - improved sustainability management & reporting



THANK YOU



Email: contact.us@itcinfotech.com



Web: www.itcinfotech.com

©2022 ITC Infotech. All Rights Reserved.

All trademarks are the registered property of the respective companies and are acknowledged.