

Microsoft Azure Virtual Desktop (AVD)



Infrastructure
Azure

Specialist
Microsoft Windows Virtual
Desktop

Planning & Implementation Workshop

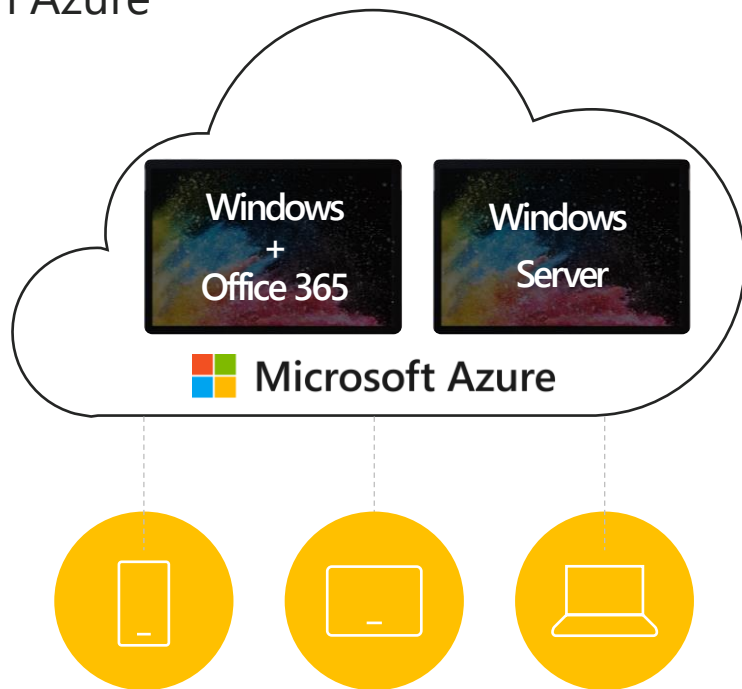


Virtualization makes IT simpler to manage and less costly to own and operate

- ✓ Increased IT agility, flexibility, and scalability
- ✓ Significant cost savings
- ✓ Greater workload mobility
- ✓ Increased performance and availability of resources
- ✓ Ability to automate operations

Azure Virtual Desktop

The best virtual desktop experience, delivered on Azure



Covered by the Azure Migration Program, ensuring the most cost-effective, frictionless way to move to the cloud



Deliver the only multi-session Windows 10/11 experience



Enable optimizations for Microsoft 365 Apps for Enterprise



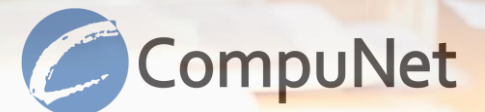
Migrate Windows Server (RDS) desktops and apps



Deploy and scale in minutes



Address hybrid requirements and existing solutions



Optimize your desktop virtualization experience to leverage the power of a modern cloud



Expand capabilities
with the best
virtualized end-user
experience



Realize more
efficient and
simplified
management



Ensure security and
modernization with
a standardized,
global cloud



Significantly reduce
costs without
compromising
quality

Expand capabilities with the best virtualized end-user experience

- ✓ Connect to any platform with an experience just like native
- ✓ Enhance protocol by adapting bandwidth utilization
- ✓ Enable fast VHD load times and log-on times with containerized user profiles
- ✓ Drive stronger collaboration with Teams enhancements



Realize more efficient and simplified management

- ✓ Unify both Desktop and RemoteApp experiences for easy-to-grasp learning
- ✓ Engage flexible user experiences through a single host pool and multiple app
- ✓ Utilize automated VM deployment
- ✓ Solve errors quickly with simplified but powerful troubleshooting with advanced diagnostics



Ensure security and modernization with a standardized, global cloud

- ✓ Reach anyone, anywhere with 54 regions (more than any other cloud provider)
- ✓ Rely on powerful cyber defense operations with over 3,500 full time security professionals
- ✓ Assign role-based access control to admins

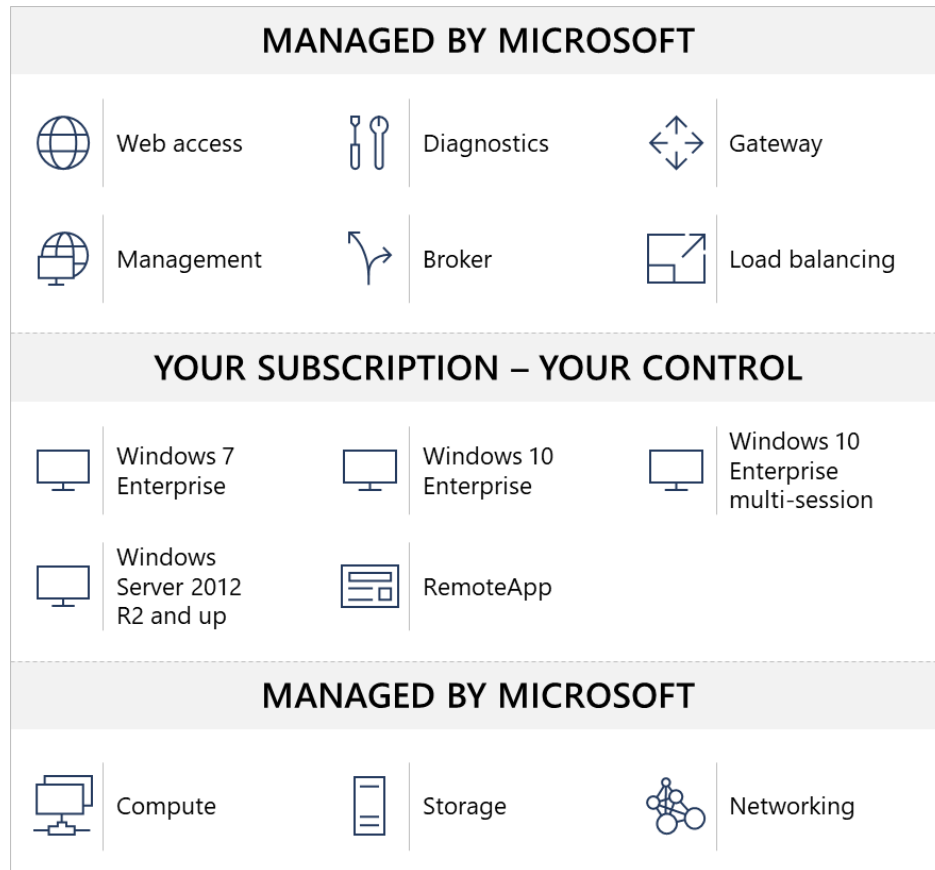


Significantly reduce costs without compromising quality

- ✓ Decrease spending to only virtual machines, storage, and networking consumed while using the service
- ✓ Employ the full Windows 10/11 experience at multi-session cost
- ✓ Absorb the licenses you already own to limit spending



High-level Architecture



Provides virtualization infrastructure as a managed service



Utilizes Azure Active Directory identity management service



Deploy and manage VMs in Azure subscription



Manage using existing tools like Configuration Manager



Simply connect to on-premise resources

Access to Azure Virtual Desktop



What are the eligible Windows and M365 licenses to access AVD?

You are eligible to access Windows 10/11 and Windows 7 with Azure Virtual Desktop if you have one of the following licenses *

- Microsoft 365 E3/A3
- Microsoft 365 E5/A5
- Microsoft 365 F3 (w/Win10 Enterprise)
- Microsoft 365 Business Premium
- Windows Enterprise E3/E5
- Windows Education A3/A5
- Windows VDA per user

** Customers can access Azure Virtual Desktop from their non-Windows Pro endpoints if they have a Microsoft 365 E3/E5, Microsoft 365 A3/A5 or Windows VDA per user license.*



What is the eligibility criteria on Remote Desktop Services (RDS) CAL licenses to access Windows Server desktops and apps on AVD?

You are eligible to access Windows Server 2012 R2 and newer desktops and apps if you have an RDS CAL license with active Software Assurance (SA).

Azure Consumption

- ✓ Pay only for the virtual machines (VMs), storage, and networking consumed when your users are using the service
- ✓ You have the flexibility to pick any VM and storage options to match your use cases
- ✓ Take advantage of options such as [one-year or three-year Azure Reserved Virtual Machine Instances](#), which can save you up to 72% versus pay-as-you-go pricing. Reserved Virtual Machine Instances are flexible and can easily be exchanged or returned

Deliver the only multi-session Windows 10/11 experience

Provide your users with the only multi-session Windows 10 experience virtualized in the cloud that's highly scalable, always up to date, and available on any device

- ✓ Multi-session and single-session Windows 10/11
- ✓ Store and legacy app remoting
- ✓ Free Windows 7 Extended Security Updates



Enable optimizations for Microsoft 365 Apps for Enterprise

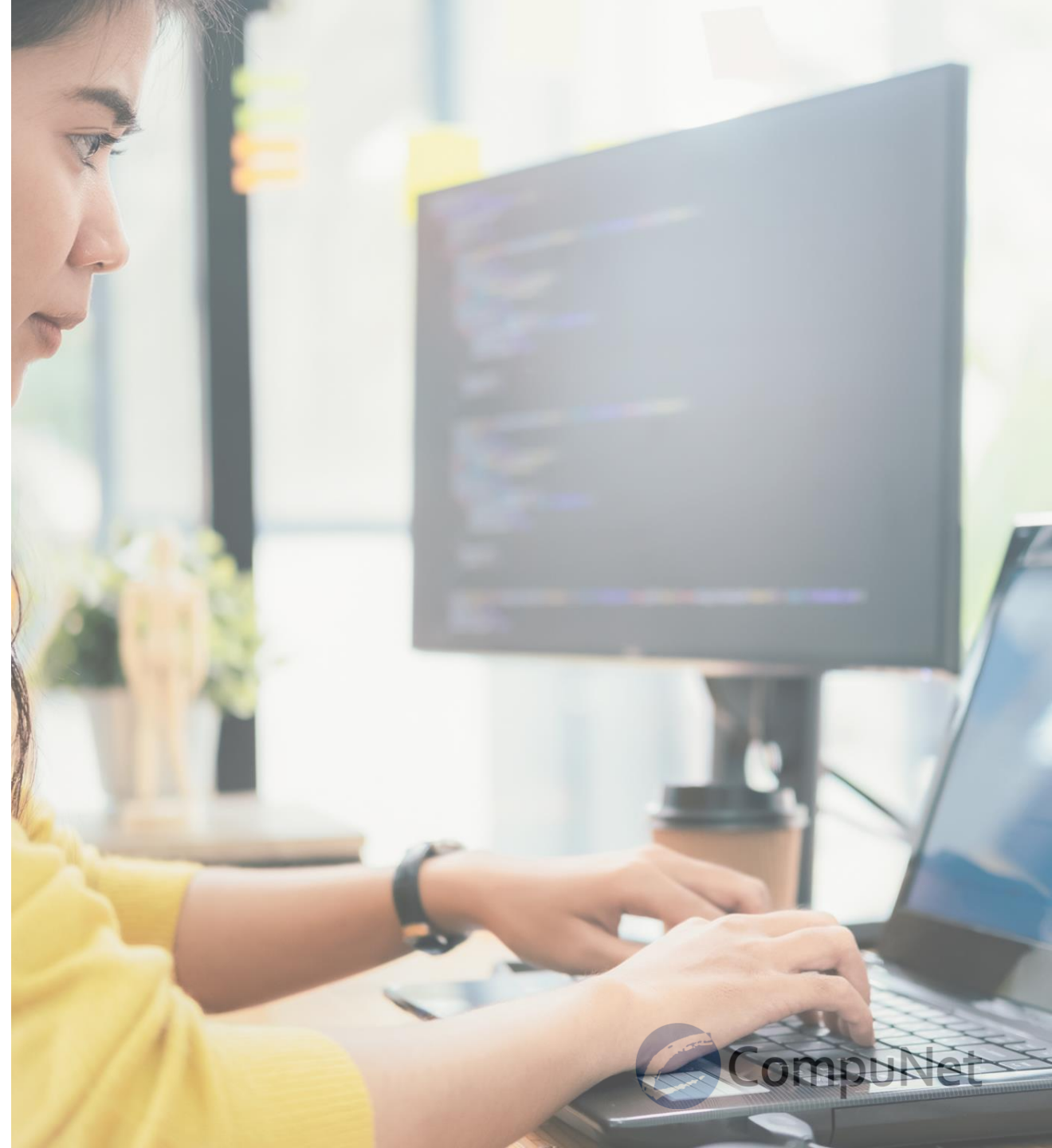
Deliver the best Microsoft 365 Apps for Enterprise experience with multi-session virtual scenarios to provide the most productive virtualized experience to your users



Office 365 containers make Office more performant in a multi-session environment including Outlook and OneDrive for Business support



Profile containers enable faster and more performant experience in non-persistent environments



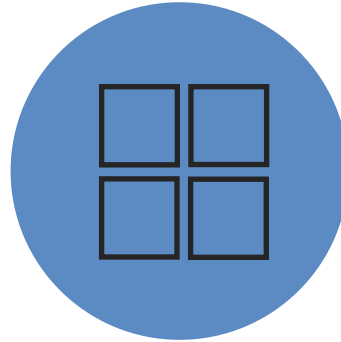
FSLogix

With the acquisition of FSLogix, eligible customers will get access to three core pieces of technology



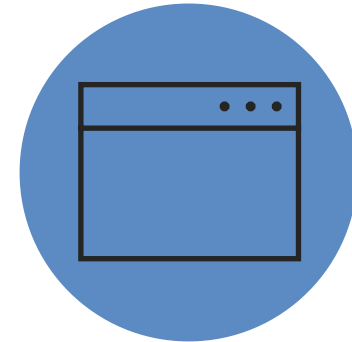
Profile container

Replacement for roaming profiles and folder redirection, including Office 365 Container, which roams all cache data



App masking

Allows single image with all applications; excellent app compatibility with no packaging, sequencing, backend infrastructure, or virtualization

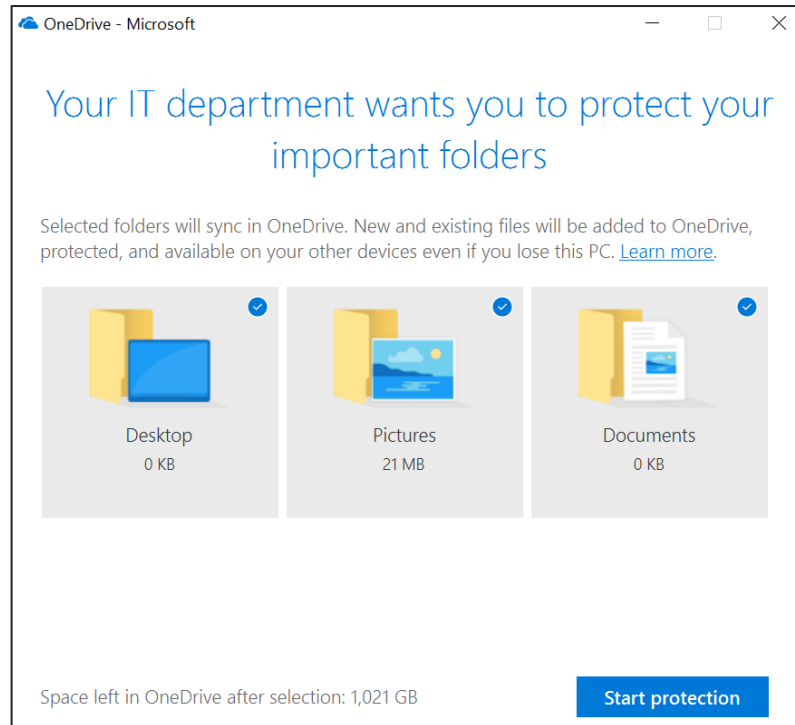


Java redirection

Helps protect the enterprise from vulnerabilities of multiple installed versions of Java by mapping specific versions to individual apps or websites

OneDrive for Business

Full support and new virtualization optimizations



OneDrive sync will run in non-persistent environments



Co-authoring and collaborative capabilities



Files On-Demand capabilities



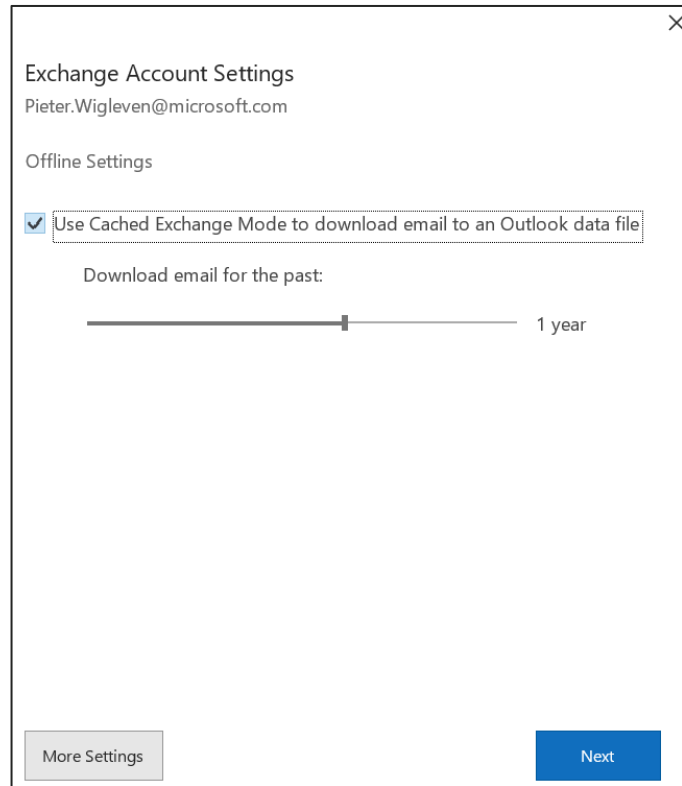
Automatically populate user profile folders



OneDrive per machine installer

Outlook optimizations

Outlook in Apps for Enterprise optimizations



Exchange Account Settings
Pieter.Wigleven@microsoft.com

Offline Settings

☒ Use Cached Exchange Mode to download email to an Outlook data file

Download email for the past:

1 year

More Settings Next



Sync inbox before calendar for faster startup experience



Admin option to reduce calendar sync window



Reduce the number of folders that are synced by default



Windows Desktop Search is now per-user



More to come

Migrate existing Windows Server (RDS) desktops and apps

Migrate your Remote Desktop Services (RDS) environment or Windows Server desktops and apps with a simplified infrastructure management and deployment experience on Azure

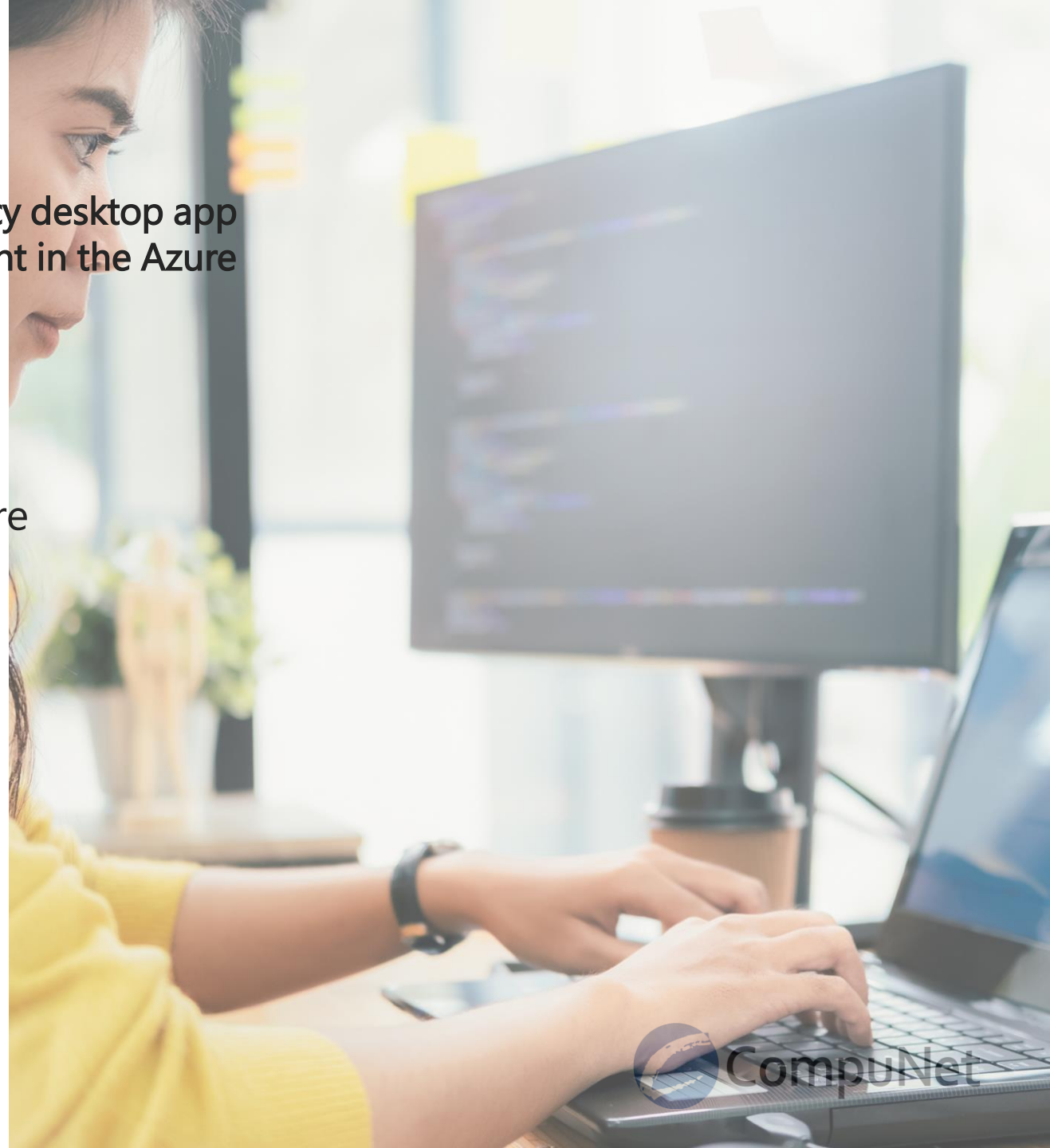
- ✓ Support for Windows Server 2012 and Remote Desktop Services 2012R2 and newer
- ✓ App compatibility for existing Windows Server images used on-prem



Deploy and scale in minutes

Quickly virtualize and deploy modern and legacy desktop app experiences in minutes with unified management in the Azure portal

- ✓ Azure has datacenters available in 54 regions, and 140 countries.
- ✓ Azure management portal for Azure Virtual Desktop
- ✓ Built in security and compliance (Windows & Azure)
- ✓ Partner ecosystem extensibility (coming soon)

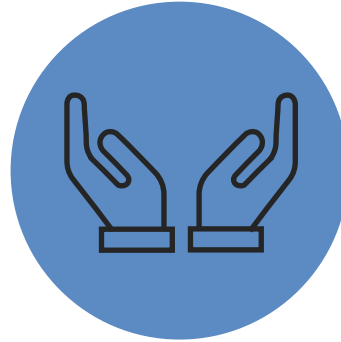


WVD deployment and management options



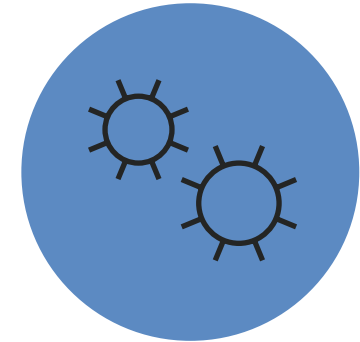
Deployment

Onboarding will be through Azure Marketplace or through GitHub using ARM templates to deploy new or update existing host pool



Management

- Azure Portal will enable native integration post GA for deployment and management alongside other Azure services
- Use REST API's to set and manage WVD directly, build complex workflows – sample UI and outlines for customers provided
- PowerShell is the best option for repeatable deployment, Azure integration, and DSC
- Other options include Terraform or partner management solutions



Hosting partners

Leverage multi-tenancy support to scale the number of customers

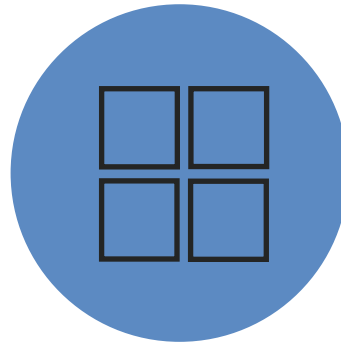
Next steps

A valuable team of CompuNet architects, engineers, consultants, and service delivery managers are standing by to help in your journey. Reach out for help with your roadmap.



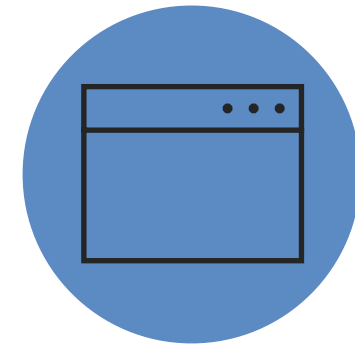
Get started today:
aka.ms/WVDGetStarted

Learn more about Azure
Virtual Desktop:
<https://aka.ms/wvdplaylist>



**Estimate the end-user
experience:**
aka.ms/avd/ExperienceEstimator

See what's coming next:
[https://www.youtube.com/
watch?
v=QLDu6QVohEI&t=19s](https://www.youtube.com/watch?v=QLDu6QVohEI&t=19s)



**Use the Azure calculator to
estimate your costs:**
aka.ms/AVDPricing

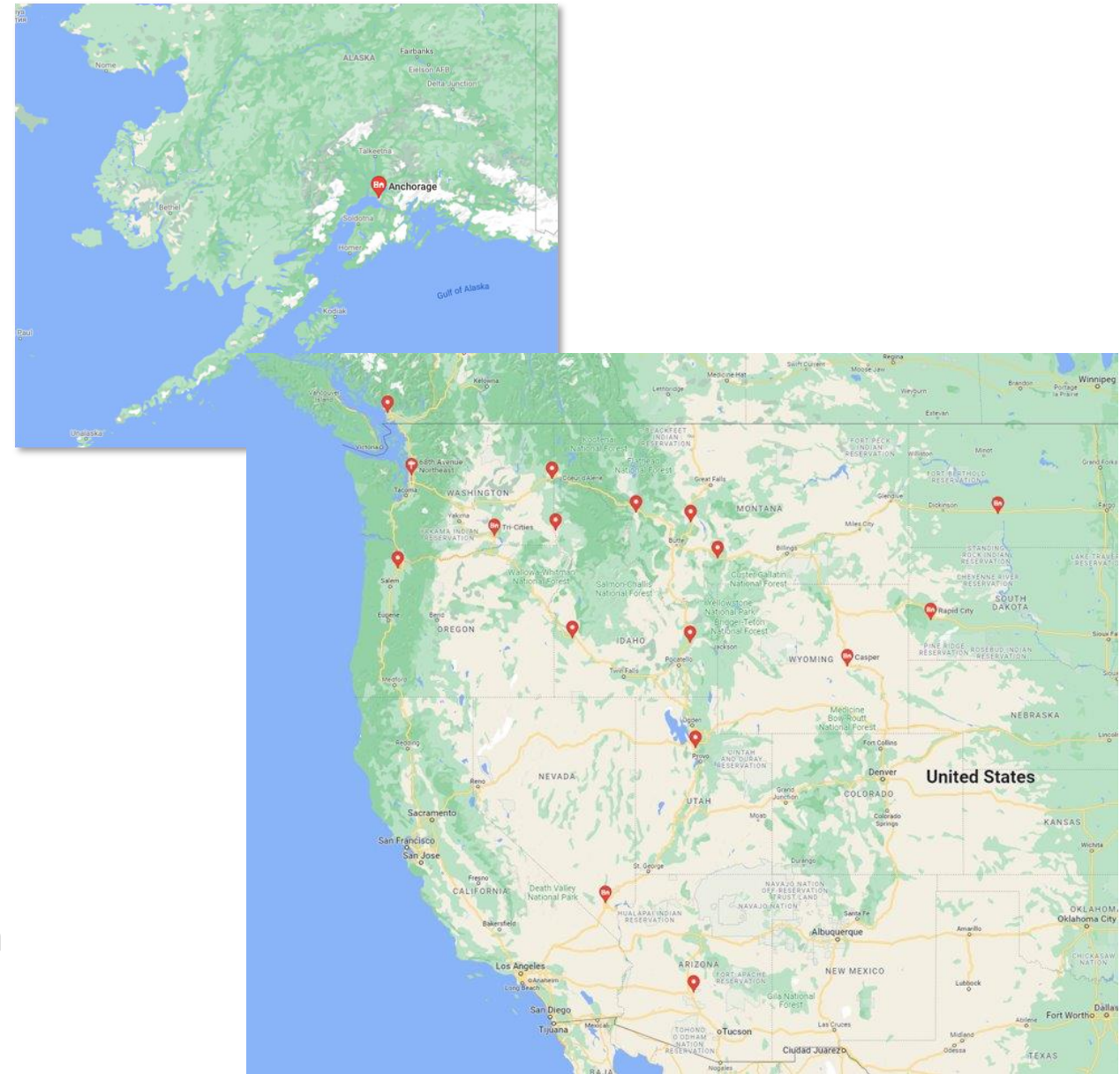
Technical documentation:
[https://docs.microsoft.com/
en-us/azure/virtual-
desktop/](https://docs.microsoft.com/en-us/azure/virtual-desktop/)

About CompuNet, Inc.

CompuNet is a 'Managed Microsoft Partner' and is part of the 'One Commercial Partner' program. We work closely with Microsoft to provide the best on-site support possible while leveraging our experience with our customers' current environment.

Contact us today to protect your Microsoft Cloud investment!

- Microsoft Cloud Solution Provider (CSP)
- Community-focused security practice
- Engineering-led, solutions-based approach



Email: MicrosoftSales@compunet.biz
Web: www.compunet.biz

