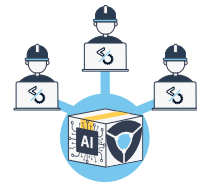


Implementation and Deployment Guide



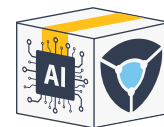
**AidenLabs
Packaging Service**

.....



**Plain-English
Policy**

.....



**AidenBot
AI Software**

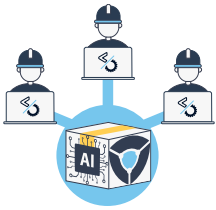
.....



**AidenVision
Reporting**

Modern Intelligent Software Packaging and Deployment

Keeping Windows computers in a desired state that ensures productivity and good cyber hygiene is a huge challenge. The complexity of modern enterprise environments under siege from hackers drives a continuous need to deploy security updates as threats are discovered and vulnerabilities exposed. Aiden exists to keep computers up to date with the speed and accuracy needed to meet this challenge. We improve end-user experience by ensuring all computers have exactly the software they're supposed to have and nothing else.



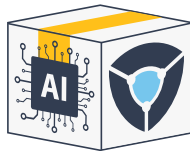
AidenLabs Packaging Service

Our team of automation engineers developing innovative solutions tailored to your needs.



Plain English Policy

The trusted library of intelligent software packages, field-tested in leading global enterprises.



AidenBot AI Software

The AI that uses hyperautomation to ensure your Windows computers are in their desired state.



AidenVision Reporting

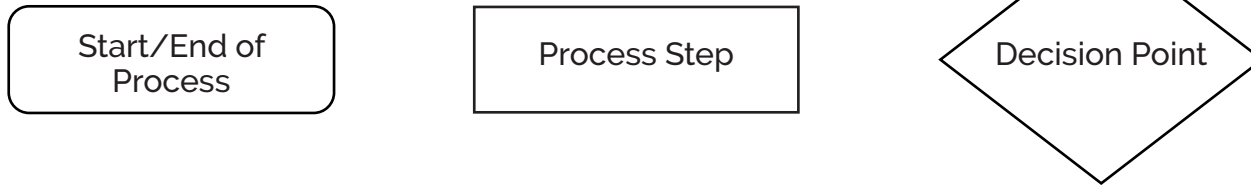
Our policy-based reporting module that provides compliance recommendations based on your endpoint desired state configuration.

"We would have needed 4 full-time application packagers. With overhead and management that's a direct expense of over \$1.2M, and they wouldn't produce the same results."

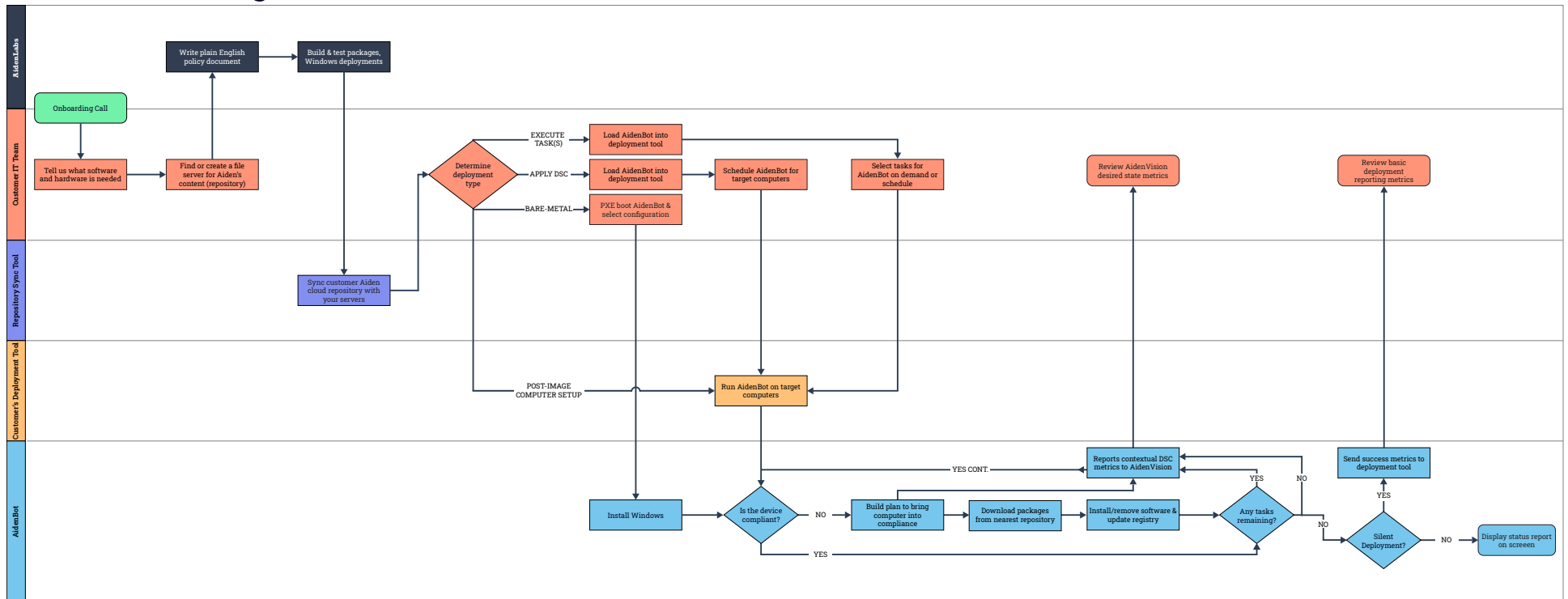
- Manager, Global End User Engineering, Large Financial Firm

Aiden onboarding, packaging and deployment process

Process Flow Key



Process Flow Diagram



Onboarding Call

AidenLabs & Customer IT Team: The first step for implementing Aiden is for our team to meet with yours to understand and document your company standards, roles, software needs, configurations, etc.

Tell us what software and hardware is needed

Customer IT Team: Provides during the onboarding call information about your environment including:

1. a list of hardware models to support
2. a list of system configurations (departments) and desired software
3. a list of language packs to install for each AD site and/or build option

Find or create a file server for Aiden's content (repository)

Customer IT Team: Creates one or more physical or virtual servers inside your network for hosting all content from Aiden, including application packages, similar to a distribution point. While running on an endpoint, AidenBot finds the nearest available repository for downloading packages. We recommend using a Windows server for the built-in PXE boot service designed for Windows deployments.

Write plain English policy document

AidenLabs: Writes your hardware and software standards, and your department-specific configurations, in an easy-to-read document which we maintain for you as part of our service. This document is also AidenBot's configuration file because we built Natural Language Processing (NLP) into Aiden.

Build & test packages, Windows deployments

AidenLabs: Custom-builds each package for your environment and thoroughly test it in our labs. Our team becomes your full application packaging service, which is included in your subscription. [\[Link to software packages\]](#) [\[Download Task List\]](#)

Example packages:

1. Windows OS
2. Windows Server
3. Applications
4. Utility packages: Windows updates, Adobe updates, hardware vendor updates, and more
5. System Utilities
6. Drivers
7. Firmware & BIOS updates
8. Software removals
9. Language packs & Regional settings
10. Fonts
11. Tasks: Encrypting Harddrive, Start Layout Config., set app defaults, and more

Sync customer Aiden cloud repository with your servers

Repository Sync Tool: (A private and secure continuous file synchronization tool) maintains all software packages from Aiden on as many distribution points as you like in your network. We manage and keep your local repositories in sync with your Aiden-provided private virtual repository in Azure.

Determine deployment type

Customer IT Team: Decide if you want to use AidenBot to update and maintain computers OR to wipe and rebuild them (bare-metal deployments). AidenBot can either perform all recommended tasks, or perform a limited set of tasks specified by the user or by the command-line interface.

- EXECUTE TASK(S) -

Load AidenBot into deployment tool

Customer IT Team: AidenBot is a package, and can be deployed silently through any deployment tool. This one package determines every other needed package for the endpoint, downloads them, and installs them in the correct order.

Select tasks for AidenBot on demand or schedule

Customer IT Team: Configures a specific task (e.g. deploy Firefox) as an available self-serve item for end users in a software portal, or use the scheduling feature of the deployment tool to control when AidenBot should take action. It is common to create a ringed deployment schedule, where pilot computers receive new content before production computers.

- APPLY DSC (DESIRED STATE CONFIGURATION) -

Load AidenBot into deployment tool

Customer IT Team: AidenBot is a package, and can be deployed silently through any deployment tool. This one package determines every other needed package for the endpoint, downloads them, and installs them in the correct order.

Schedule AidenBot for target computers

Customer IT Team: Uses the scheduling feature of the deployment tool to control when AidenBot should take action. It is common to create a ringed deployment schedule, where pilot computers receive new content before production computers.

- BARE-METAL -

PXE boot AidenBot & select configuration

Customer IT Team: Boots into Aiden with our always up-to-date Windows Preinstallation Environment (WinPE) image. From there, you can choose the system configuration, a.k.a. "device role," the desired version of Windows, and whether or not to start clean and delete existing data on the endpoint, which we recommend. (To wipe-and-load a computer, also known as a bare-metal Windows deployment, we enable Microsoft's PXE boot service called Windows Deployment Services (WDS) on each of your server-based Aiden repositories.)

Install Windows

AidenBot: Performs a clean installation of Windows from the original files from Microsoft. Next, it installs the exact drivers, firmware updates, and system utilities intended for the specific device. And then, AidenBot installs all applications, language packs, fonts, etc. for the selected system configuration or device role. (AidenBot does not image or clone machines, and does not require cleanup steps or workarounds for duplicate GUIDs.)

- POST-IMAGE COMPUTER SETUP -

Your deployment tool can run AidenBot if you are using Autopilot, MDT, SCCM OSD, or any other computer setup process. For a specific group, AidenBot can be sent with a command to ensure the drivers are installed correctly, all standard apps and group-specific apps are installed and up to date, unwanted apps are removed, etc.

Run AidenBot on target computers

Deployment Tool: Runs AidenBot on all targeted computers using the deployment tool's agent, depending on your schedule.

Is the device compliant?

AidenBot: Scans and compares the computer with your policy document OR requested tasks to see if they've been completed successfully.

- NO -

Build a plan to bring computer into compliance

AidenBot: Scans the endpoint, and compares its current state to your policy. Then builds a task sequence with every action required to either bring the computer into full compliance with your policy, or to complete a more specific request.

Reports contextual DSC metrics to AidenVision

AidenBot: Continually reports to AidenVision, detailing the state of compliance of every endpoint with your policy. This allows your IT team to view up-to-date, in-depth, and historical deployment metrics based on your Desired State Configuration (DSC).

Download packages from nearest repository

AidenBot: Uses the rules in your policy to determine the preferred package repositories for the endpoint, which are typically based on the endpoint's physical location. AidenBot can download packages from traditional file shares, and from cloud storage.

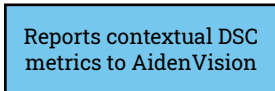
Install/remove software & update registry

AidenBot: After running each package on the endpoint, AidenBot validates success, and updates reporting data in the registry.

- YES -

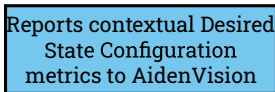


AidenBot: Rescans the endpoint, and compares its current state to your policy.

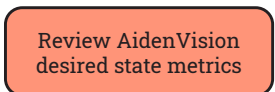


AidenBot: Continually reports to AidenVision, detailing the state of compliance of every endpoint with your policy. This allows your IT team to view up-to-date, in-depth, and historical deployment metrics based on your Desired State Configuration (DSC).

- NO -

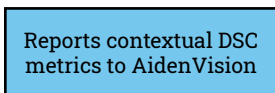


AidenBot: Continually reports to AidenVision, detailing the state of compliance of every endpoint with your policy. This allows your IT team to view up-to-date, in-depth, and historical deployment metrics based on your Desired State Configuration (DSC).



Customer IT Team: Logs into Aiden.Vision using your organization's Microsoft Azure AD account to review up-to-date desired state compliance metrics.

- YES -

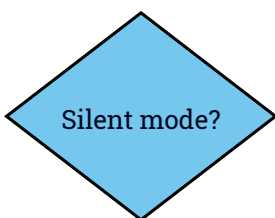


AidenBot: Continually reports to AidenVision, detailing the state of compliance of every endpoint with your policy. This allows your IT team to view up-to-date, in-depth, and historical deployment metrics based on your Desired State Configuration (DSC).

- YES CONT. -

After reporting to AidenVision, AidenBot updates the task sequence with the remaining tasks to either bring the computer fully into compliance with your policy, or to execute a specific request. If your policy or your applicable packages have changed since the last scan, AidenBot will update the task sequence accordingly. During an OS deployment, AidenBot will automatically retry remaining tasks, if any, after each reboot.

- NO -



AidenBot: Checks if silent mode command is present.

- NO -

Display status report
on screen

AidenBot: Displays a status report on the endpoint, in English.

- YES -

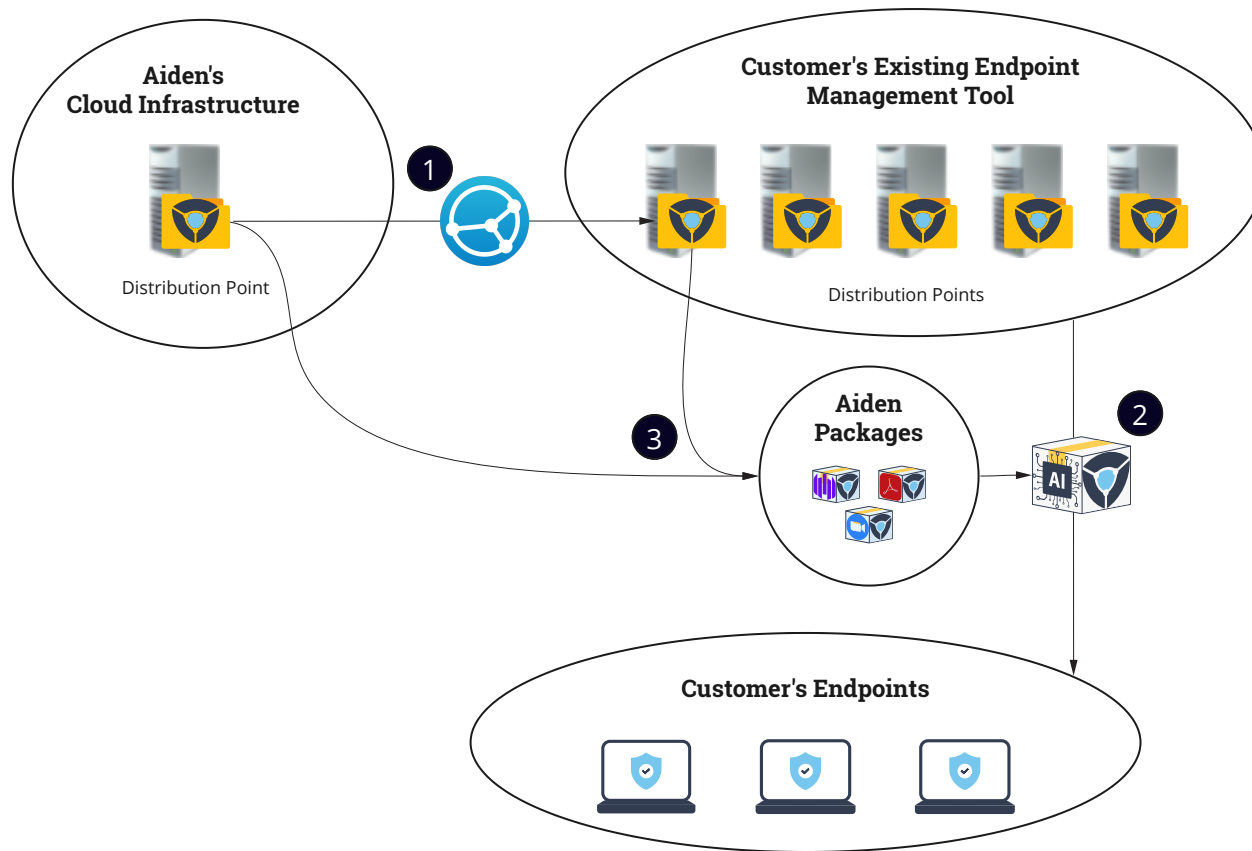
Send success metrics to
deployment tool





AidenBot: Returns a status code to the deployment tool and, because AidenBot is not an agent, it's removed by the deployment tool when finished.

Review basic
deployment
reporting metrics

Customer IT Team: Can review basic deployment reporting metrics inside deployment tool.

Aiden's Architecture & Data Flow



1	We deliver content to all of your distribution points, and keep them in sync.
2	Customer's endpoint management tool deploys AidenBot package to each endpoint.
3	AidenBot determines packages needed on each endpoint then pulls them from a distribution point.
	Aiden Content Folder A folder on your existing distribution points that contains the Customer's plain text policy, AidenBot and Aiden packages.
	Repository Sync Tool A private and secure continuous file synchronization tool that maintains all software packages from Aiden on across the client's distribution points.
	AidenBot An agentless portable application (.exe file) that customer's endpoint management tool deploys to endpoints.
	Aiden Packages Customized packages for automating software/driver/firmware installations, patching, rollbacks, removals, reconfigurations, and other changes on Windows endpoints. These packages can be called by the AidenBot or deployed individually via a deployment tool.



About Aiden

Aiden offers scalable software that integrates with any deployment tool to ensure that every device across your Windows environment is continuously configured, updated, and secured to your desired state. Powered by artificial intelligence, Aiden simplifies and hyperautomates the time-consuming and tedious tasks of building, imaging, and patching Windows computers, virtual desktops, and servers, so your IT engineers can spend more time focusing on high-impact, more rewarding projects, and your end users will have exactly the software they're supposed to have, and nothing else. Aiden reduces vulnerabilities by 97% and help desk tickets by more than 75%.

CONTACT US:

(866) 442-4336

sales@meetaiden.com

meetaiden.com

