

Empathic Building

Employee Experience & Smart Building Software

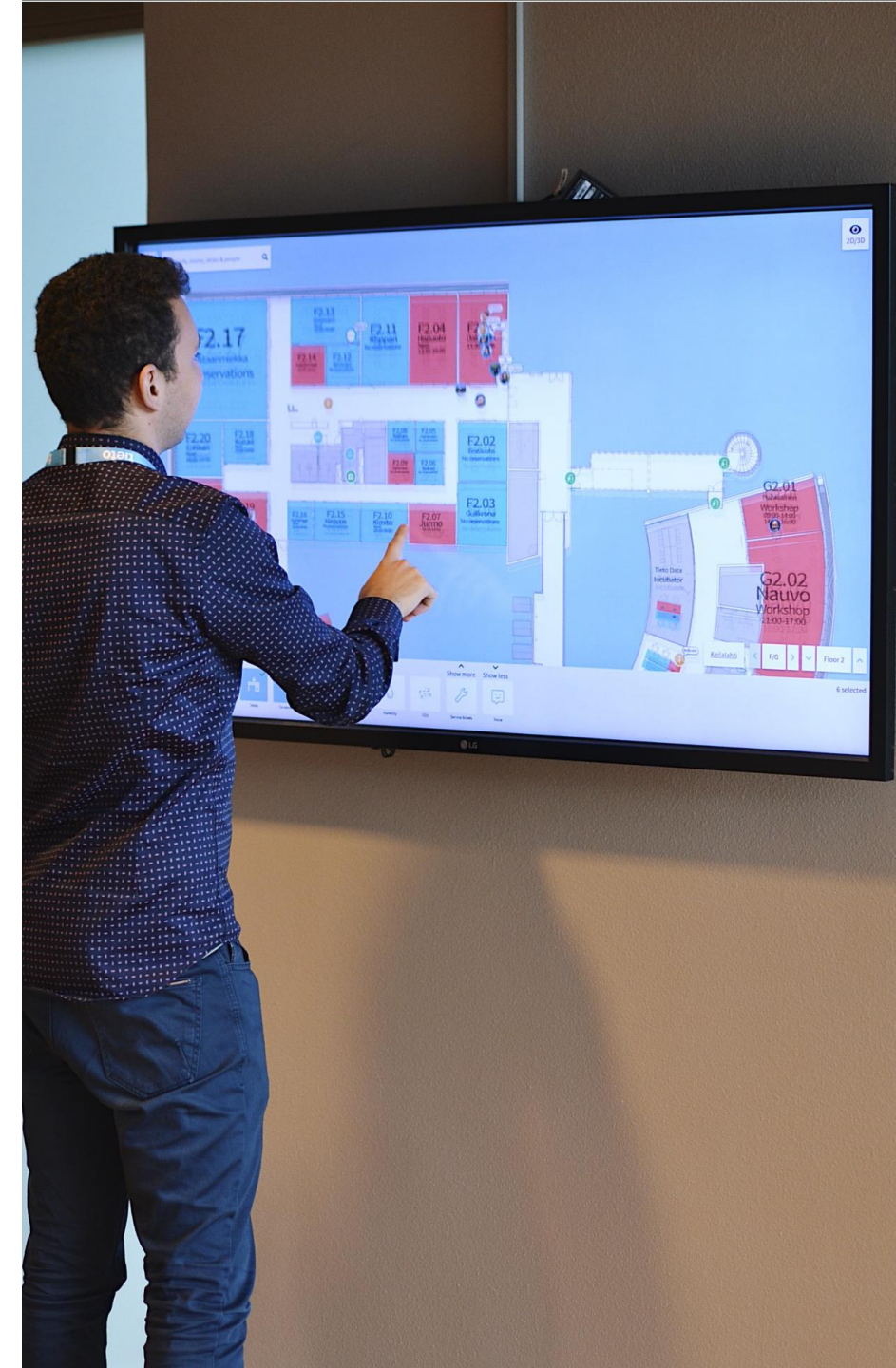
Starting with a Digital Twin

Empathic Building can be opened via a browser on any laptop, tablet, smartphone or touchscreen

We will make the digital twin and we need:

- Dwg or Pdf drawings that have the building name and floor number
- They should be high quality and include the desk and room layout
- The plans should only show furniture and walls and not have text or numbers
- A scale for the drawing must be shown

You can search for and get the navigation route to any component for example rooms, desks, restaurants

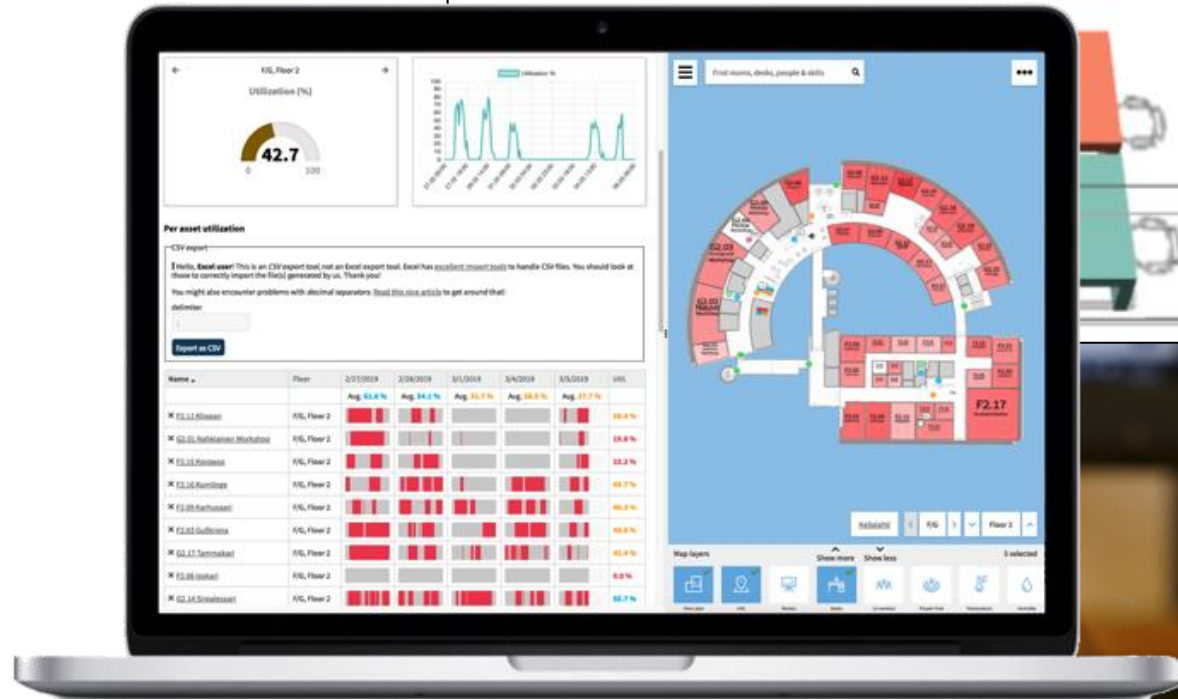


Occupancy

Free desk and rooms can be detected via sensors

Employees can see them on the digital twin

Empathic Building also produces occupancy reports for desks and rooms



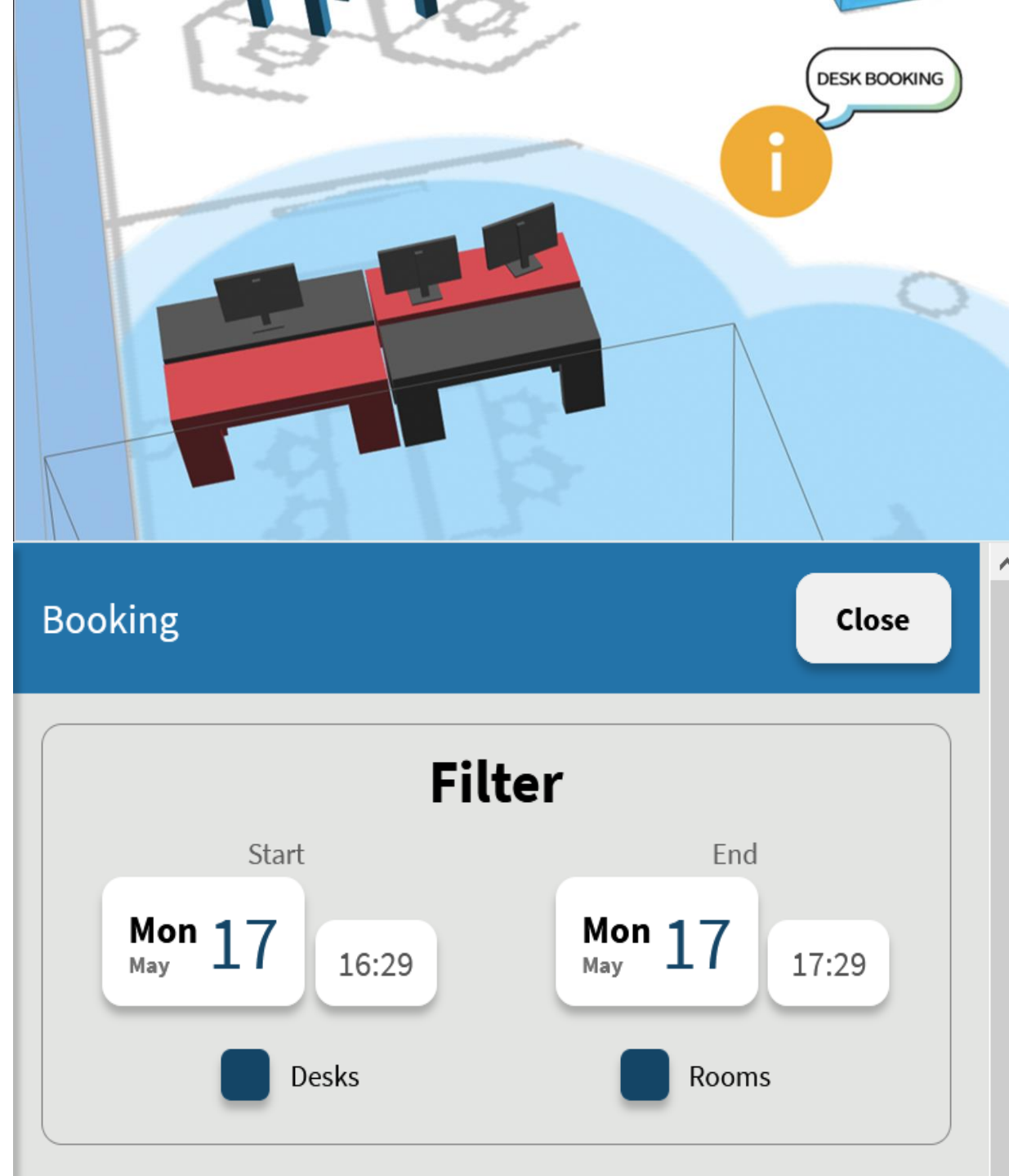
Reservations

The digital twin can be used to click on an asset and to book it

Bookable assets are

- Desks
- Rooms, zones, phone booths
- Lockers
- Car parking spaces

Empathic building connects seamlessly with Microsoft Exchange and Google Workplace



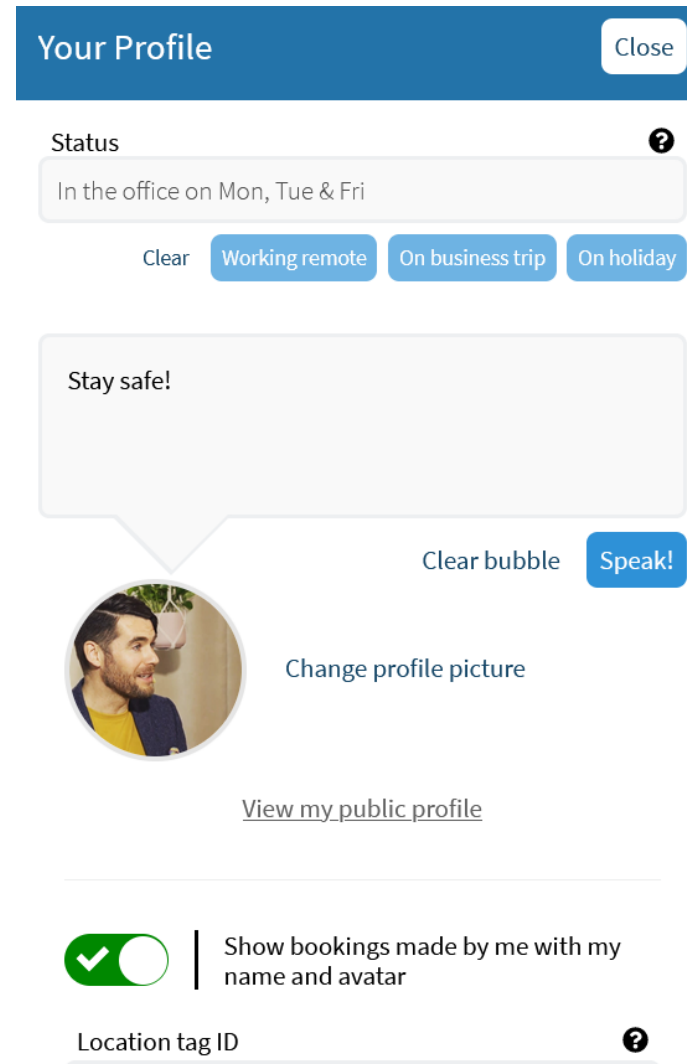
Improving Collaboration, Culture and Community

At the beginning Empathic Building does not share location.

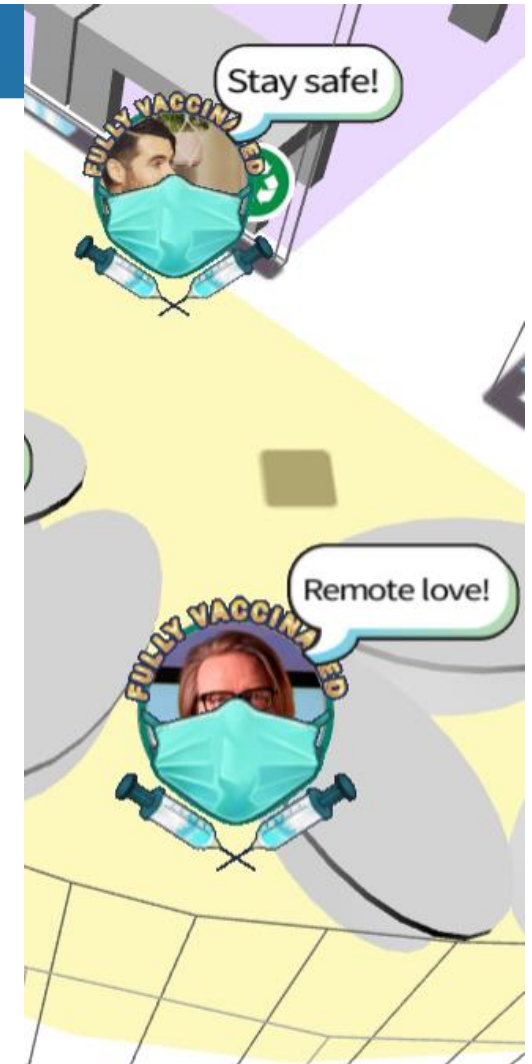
Employee must turn this setting on to share their location in their profile.

Location can be shared in 3 ways

- Manually click on the map to share your location each day
- Location based on the desk that you have reserved for that day
- Real-time location via BLE tags or phone app



The screenshot shows a 'Your Profile' interface. At the top, there is a blue header with the text 'Your Profile' and a 'Close' button. Below this, the 'Status' section is visible, with a text input field containing 'In the office on Mon, Tue & Fri'. To the right of the input field is a question mark icon. Below the input field are four buttons: 'Clear', 'Working remote', 'On business trip', and 'On holiday'. A large white speech bubble contains the text 'Stay safe!'. To the right of the bubble are 'Clear bubble' and 'Speak!' buttons. Below the bubble is a circular profile picture of a man with a beard. To the right of the picture are links for 'Change profile picture' and 'View my public profile'. At the bottom, there is a toggle switch that is turned on (green with a checkmark) next to the text 'Show bookings made by me with my name and avatar'. Below this is a 'Location tag ID' field with a question mark icon.

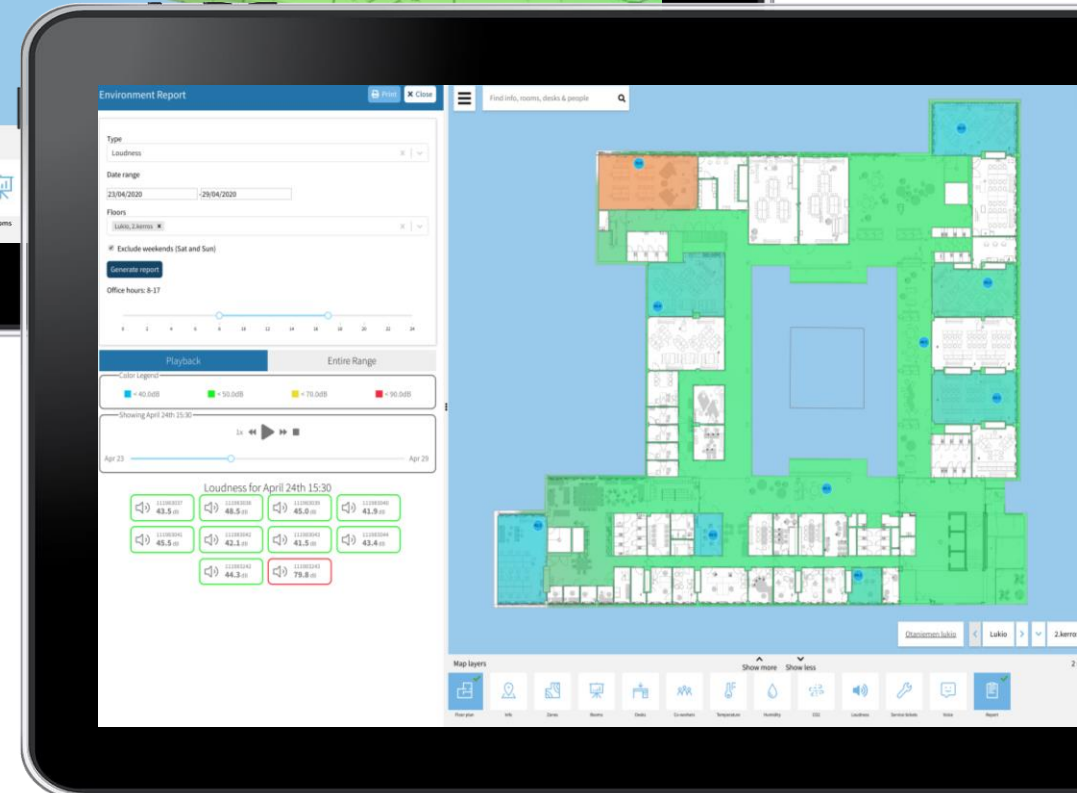


Indoor Conditions

Empathic building can visualise indoor conditions with separate layers for

- Temperature
- CO₂
- Humidity
- Air pressure
- Illuminance

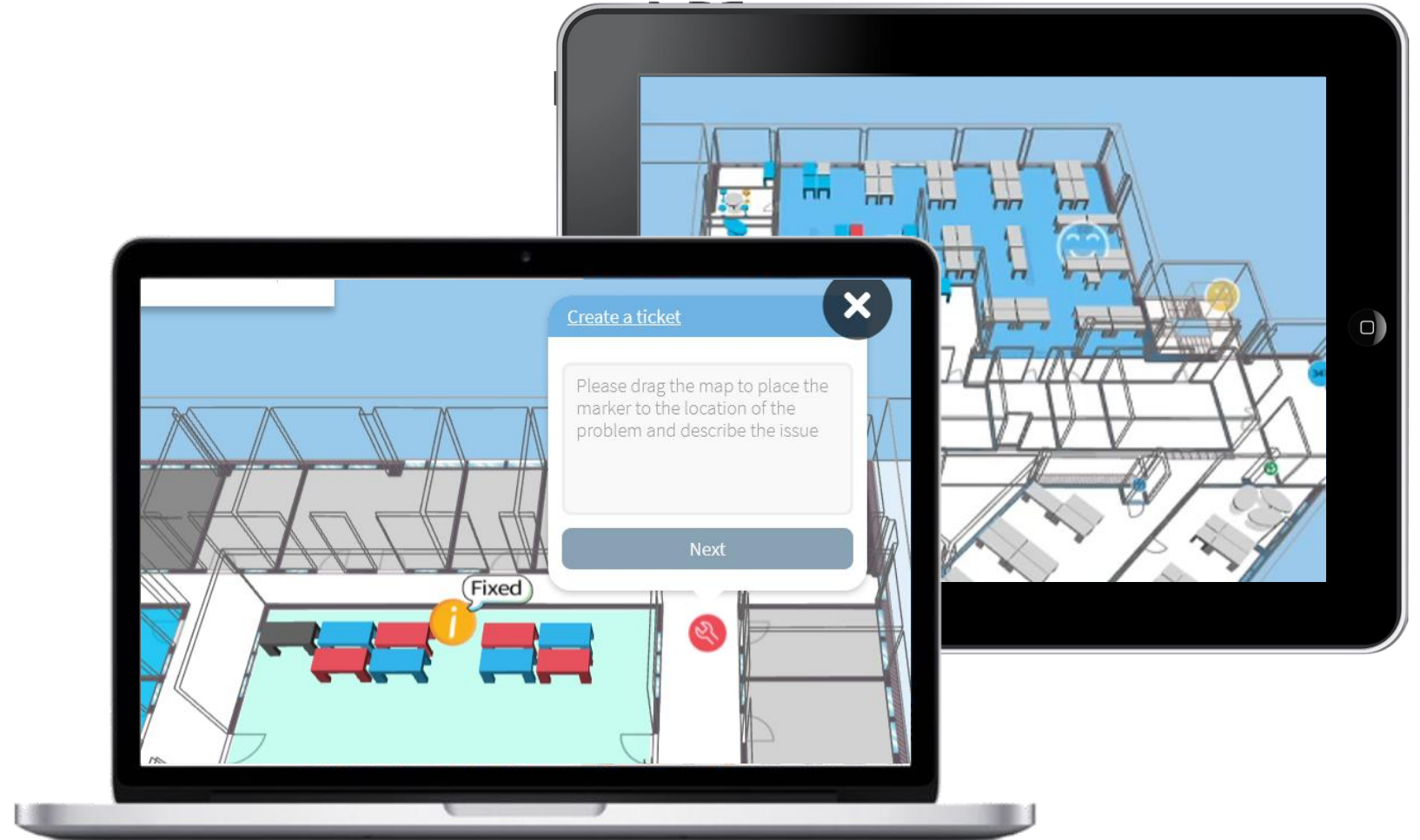
Reports can also be generated for these data sets



Service Tickets and Employee Feedback

Its super easy to report a service ticket and to attach it to a precise location by clicking on the digital twin

The same can be done for employee feedback



Communication Tools

Click on the icon to open a pop up which shows more information and provides a hyperlink

Links can be for example:

- Restaurant menus
- Taxi booking
- Safety guidelines
- Gym opening times
- Floor rules such as this is a quiet and concentration floor



Desk Booking

Desk Booking: The Number 1 Feature for New Normal

Booking desks is now more important than before.

More remote working means that more companies will move to a flexible desk policy and people will want to know where the free desks are.

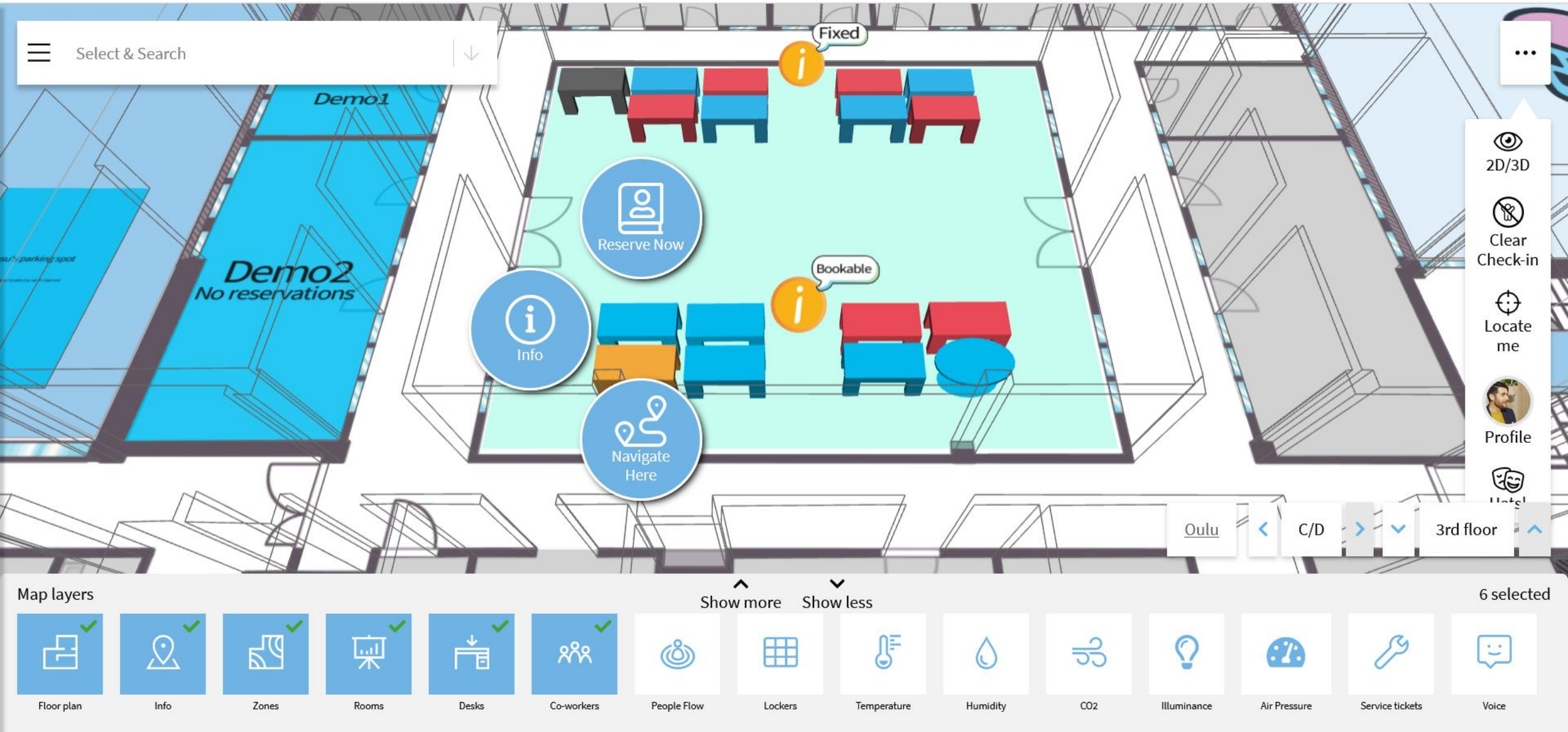
- Employees will also want to be able to find their colleagues.
- Managers will also be able to measure how many desk are needed.

Also companies are worried that too many people will come in on the same day and the office will be over crowded.

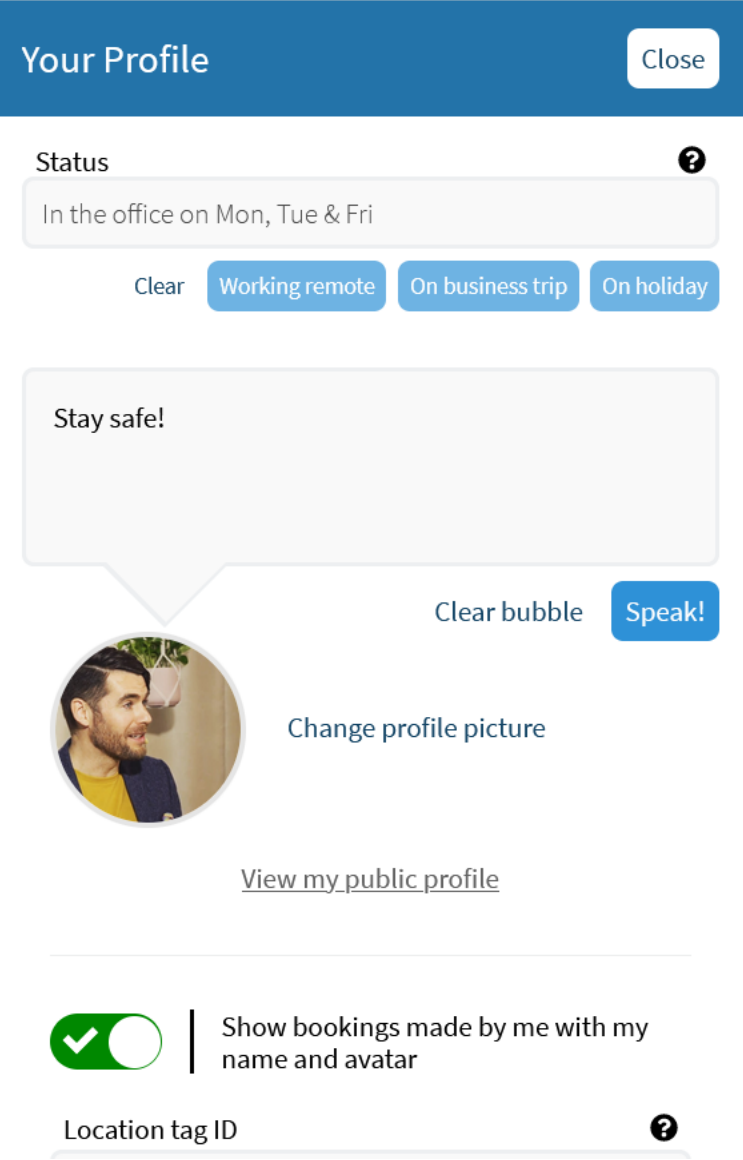
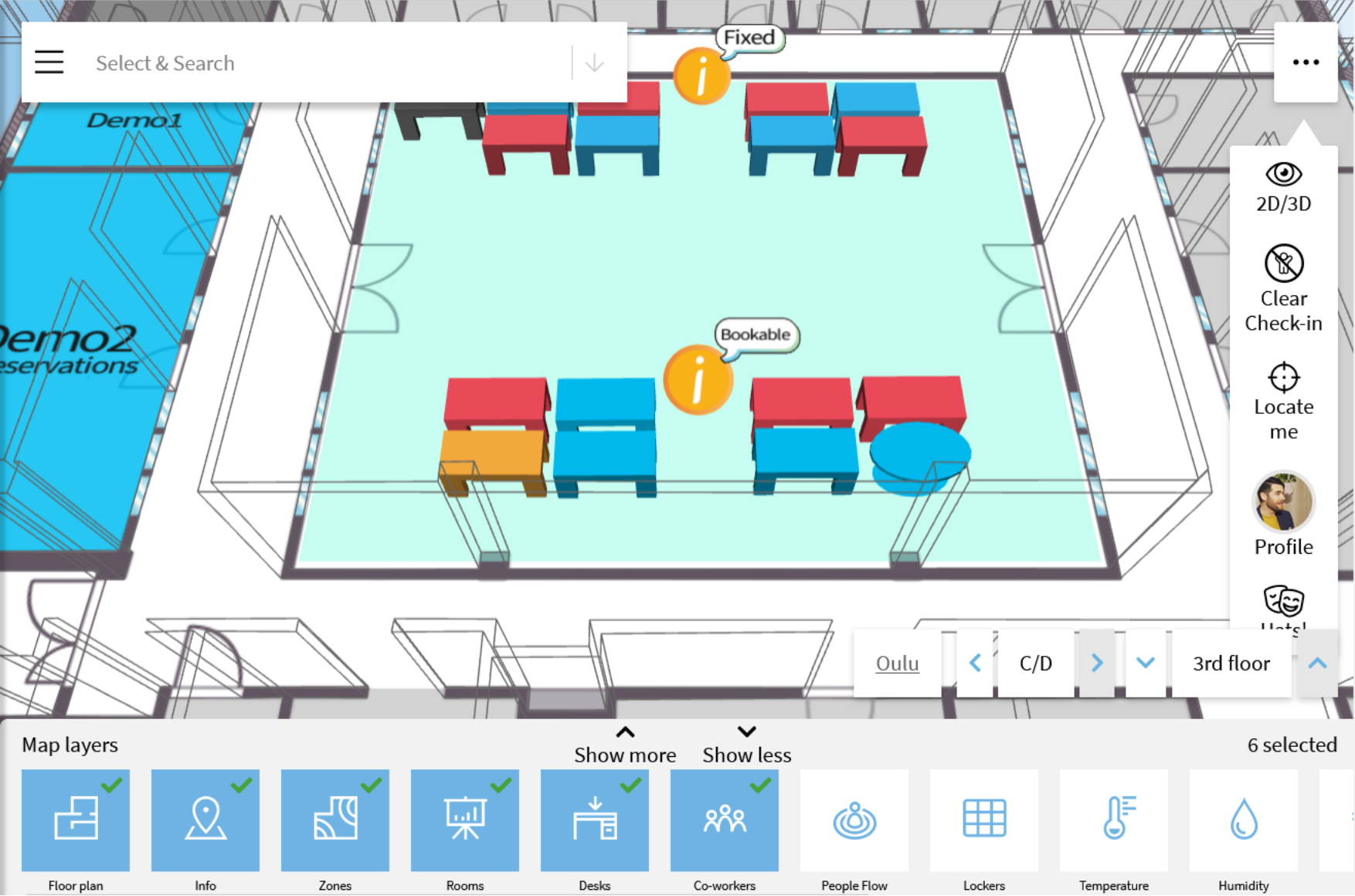
- The companies that are worried about this can now ask their employees to book a desk before they arrive at the office and not to come to the office if there are now desks left.

If you want your colleagues to be able to find you then you can set it up this way.

Clicking the desk shows the "Reserve now" option



Employees can choose to "show bookings made by me with my name and avatar" in their profile



Booking a desk does 2 things. It reserves a desk and allows you to effortlessly show your location

