

*'To mitigate a crisis, we need to bring together relevant data, in a very short time'*

## Creating scenarios in crisis situations

Crisis management relies on verified information that is presented in such a way that it becomes understandable and actionable. However, converting information into operational scenarios is arduous and time consuming, when it is done by humans.

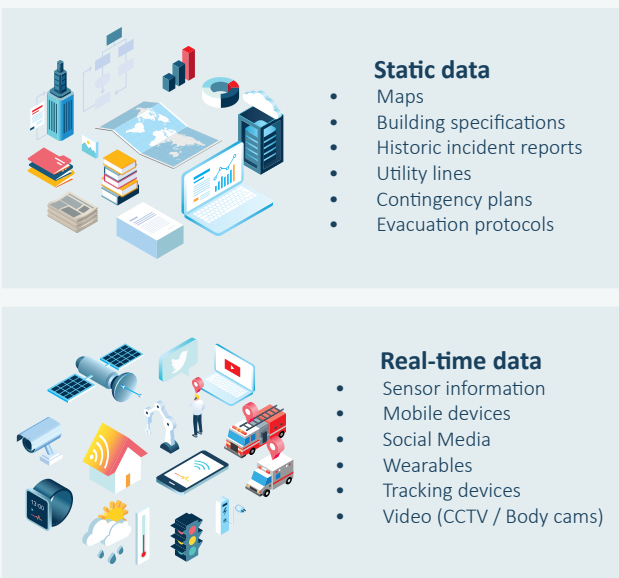
**CRISIS CONTROL** introduces the power of data science to crisis management. It is able to accumulate many different sources of data. Moreover, it is able to create *operational scenarios* out of *historic knowledge* and *actual information* according to the following formula:



**CRISIS CONTROL** supports the decision-making process of crisis response teams and management by bringing together data from all stakeholders with (semi-)open sources. It allows crisis management organisations

- **to learn** from their history by assembling the knowledge of the organisation(s)
- **to respond** to developing incidents by creating a realtime Common Operational Picture
- **to predict** future behaviour by creating prospective scenario's

**CRISIS CONTROL** presents information in such a way that it becomes understandable and actionable. It is able to generate a realtime common operational picture of the crisis situation, that may be shared by more than one command.



**Common Operational Picture**

*'The Pandora Intelligence scenario model highly increases the capability of Law Enforcement Agencies to solve and predict criminal activities. And that includes terrorism'*

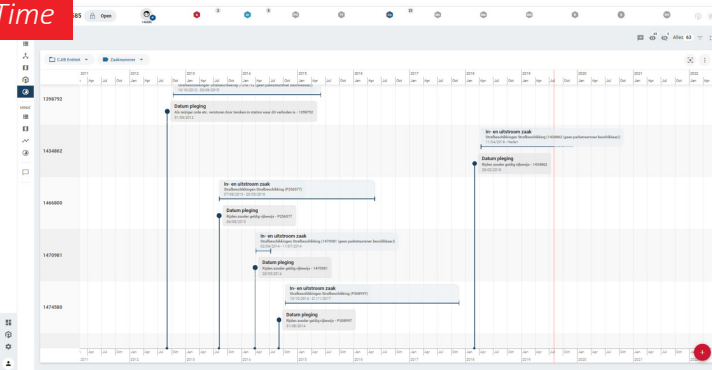
**D. Jackson** (Operational Director of New Scotland Yard)

*'I have not seen a system that comes close to the approach of Pandora Intelligence. It's the best invention since sliced bread'*

**D. van Dormael** (CEO SERIS Group Europe)

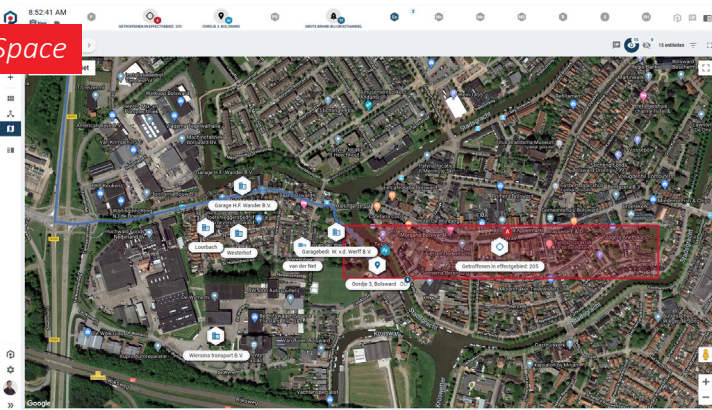
**CRISIS CONTROL** is able to generate a realtime common operational picture of the crisis situation. It presents data in relation to time, space and relation.

**Time**



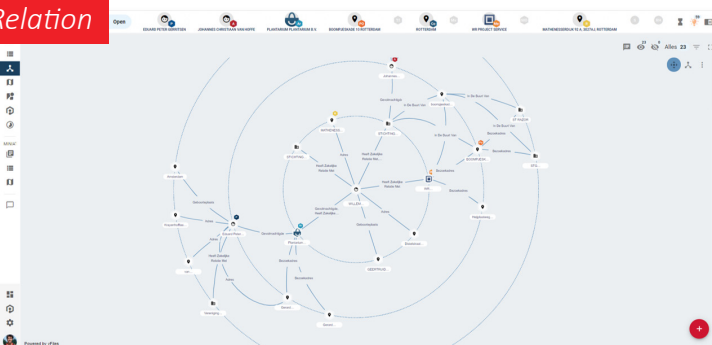
**The timeline-view** visualizes data that has a meaningful chronological order. The feature supports scrolling through time as well as zooming in and out to shorter/longer periods at lower/higher aggregation levels. Events on the timeline can be entered and marked using various types of display items. The timeline feature is crucial in understanding the historic sequences of events and the decisions that have been taken, as well as in anticipating the future developments of the crisis.

**Space**



**The space-view** provides a cartographic 3D representation of the data. It includes integration of different geospatial layers such as building specifications, utility lines, and orthophoto imagery. The feature allows the integration of proprietary datasets and external Geographic Information Systems. Moreover, it allows the interactive planning of resources and allows the user to monitor the status and location of personnel and vehicles.

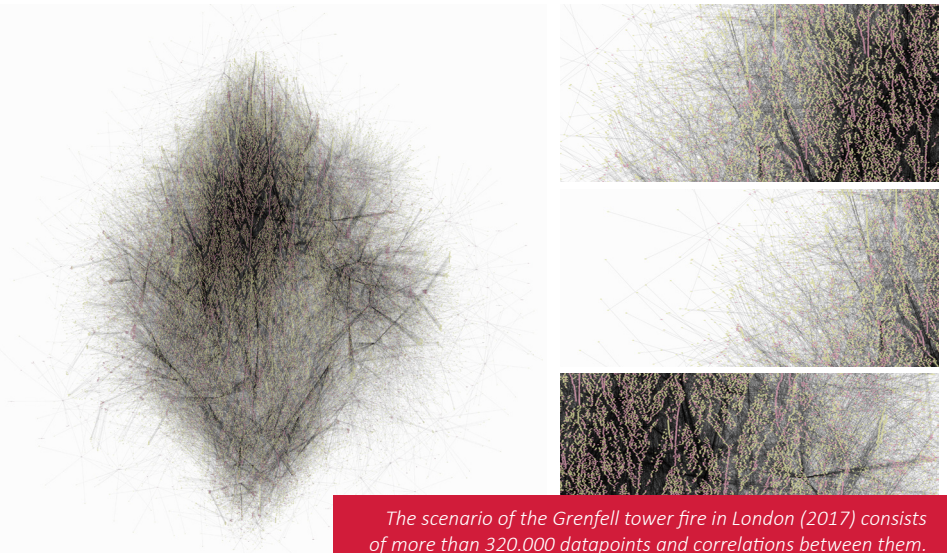
**Relation**



**The relation-view** visualizes correlation in data. It adds value to individual datasources by discovering the relationships between them. It allows relevant plans and mitigation strategies to be included in the process of crisis management and it allows for the discovery of historic incidents (worldwide) that resemble the actual crisis. This feature provides crisis management teams with the ability to discover relations in data that cannot be found by human operators.

## Scenario methodology

The (patented) scenario methodology of Pandora Intelligence includes twelve scenario-components that hold hundreds of thousands of underlying subcomponents. Moreover, it includes the complex relation between all these subcomponents, such as the interactions between characters, goals, motivations, modi operandi, symbolism, and resistances that have to be overcome. The scenario methodology allows every past, present and future incident to be translated (automatically) into individual scenarios.



*The scenario of the Grenfell tower fire in London (2017) consists of more than 320.000 datapoints and correlations between them.*

It is important to note that while every individual scenario has a different form, the structure of all scenarios is generic. This allows to mathematically combine, compare and contrast different scenarios (past, present or future) with each other. It enables extremely large amounts of data to be analyzed in realtime and in doing so, enables the discovery of relations that have been obfuscated in data throughout history.

## Pandora Intelligence

Pandora Intelligence is an independent intelligence company, specialized in security risks. It provides the latest generation of analysis software to Law-enforcement agencies, Governments and ministries, Newsagencies, Intelligence services, Military organisations and Safety regions.

