



PRODUCT SHEET

Data and User Risk Assessment

Don't know where your risks lie?

Get full visibility on your users & sensitive data



Assess: Data and User Risk - Actionable audit, in minutes.

Challenge



Do you know who your users at risk are?

COVID-19 has accelerated cloud migration as organizations adapt to enable remote work, resulting in sensitive data being accessed and shared more easily.

In these challenging economic conditions, organizations urgently need to manage information security with the least cost, by identifying and prioritizing protection for high-risk users.

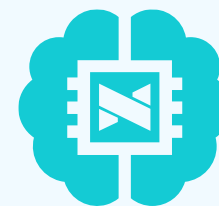
Identify your risk by getting full visibility on the sensitive data accessed by users.

Solution

Secure your modern workplace with Dathena's Data and User Risk Assessment, empowering you to:

- ✓ Automatically and accurately map users based on access to sensitive data
- ✓ Automatically recommend data protection licenses & add-ons allocation based on optimal risk coverage and license cost
- ✓ Evaluate your potential license fee cost savings

True A.I.



Groundbreaking A.I.
Technology with 7 patents* and counting.
Unlocking your potential of DevSec Ops.

Your Benefits

- ✓ Get a full risk assessment in 48 hours
- ✓ Define your data risk remediation plan in minutes
- ✓ Increase your IT security operations productivity by 1000%

Requirements

Cloud Environment:



Note(*): Patents filed and pending award.

Full Visibility on your users and sensitive data

1 Overview on your Organization's Risk Profile by Users

2 Risk Level of Individual Users

3 Recommended Course of Action using our Solutions

4 List of Sensitive Files with Key Metrics

Internal and External Access
Amount of Personal Data
Sensitivity and Risk Level

5 Locate Folders with High Amounts Sensitive Files

6 Identify Users' Groups that Access the Most Sensitive Files

Data and User Risk Assessment

1 What are your users' risk profile?

Total Users: **1.9K**

Users' Risk Profile:

- High: 494
- Medium: 551
- Low: 855

Users' risk is computed based on the volume of sensitive files each user has access to

2 Who are your users?

User	Sensitive files	Risk
Charles Smith	3.8K	High
Len Lesser	3.6K	High
Peter Parker	3.5K	High
Austin Jones	2.7K	High
Mike Harrison	2.6K	Medium
Peter Parker	2.5K	Medium
Charles Smith	2.4K	Low

3 Recommendations

- 20 high-risk files are shared with more than 18 guests having a public email domain
- 20 high-risk files are shared with more than 26 guests having a business email domain
- 13K Accounting & Secret files are not protected against data loss
- 23K Sensitive files are shared externally

4 What are your users' files?

Files: **95K**

Sensitive Files: **38K/95K**

Sensitive Files with Personal Data: **14K/38K**

File	App	Modification Date	Internal Access	External Access	Personal Data	Sensitivity	Risk
Product_roadmap_2021.pdf	Office	12 Jan 2021	1422	152	0	Yes	High
Corporate_card_expenses.xls	Office	2 Feb 2021	152	50	253	Yes	High
customer_2020_list.xls	Office	19 Jan 2021	88	83	201	Yes	High
Sales_forecast.ppt	Office	22 Dec 2020	221	53	12	Yes	High
Financial_Analysis.doc	Office	17 Nov 2020	182	43	98	Yes	Medium
Board meeting - Project.xls	Office	12 Jan 2021	12	86	0	Yes	Medium
Client profiles.doc	Office	4 Feb 2021	458	4	54	No	Medium
Meeting_notes_Feb2021.ppt	Office	2 Feb 2021	252	2	0	No	Medium
Activities_plan	Office	27 Apr 2020	65	0	49	No	Low
Operational_process.doc	Office	12 Mar 2021	58	1	12	No	Low

5 Where are your users' files stored?

Folder	Sensitive files	Personal Data
SharePoint/client	11K	124
SharePoint/hr	8K	124
SharePoint/sales	5K	124
OneDrive	4K	124
SharePoint/technology	3K	124

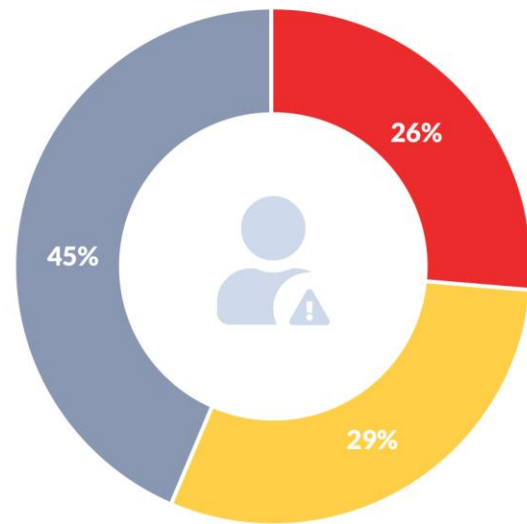
6 What are your users' groups?

Group	Sensitive files	Personal Data	Users	Risk
general_hr	3.4K	138K	852	High
sales.uk	3.2K	74K	68	High
sales_general	3K	70K	312	High
marketing_china	2.8K	800K	121	Medium
marketing_hongkong	2.5K	42.2K	85	Medium





What are your users' risk profile?



Total Users
1.9K

Users' Risk Profile:

- High 494
- Medium 551
- Low 855

Users' risk is computed based on the volume of sensitive files each user has access to

Who are your users?

User	Sensitive files	Risk
Charles Smith	3.8K	High
Len Lesser	3.6K	High
Peter Parker	3.5K	High
Austin Jones	2.7K	High
Mike Harrison	2.6K	Medium
Peter Parker	2.5K	Medium
Charles Smith	2.4K	Medium

What are your users' files?

Files

95K

Sensitive Files

38K/95K

Sensitive Files with Personal Data

14K/38K

See details

File	App	Modification Date	Internal Access	External Access	Personal Data	Sensitivity	Risk
Product_roadmap_2021.pdf	Office	12 Jan 2021	1422	152	0	Yes	High
Corporate_card_expenses.xls	Excel	2 Feb 2021	152	50	253	Yes	High
customer_2020_list.xls	Excel	18 Jan 2021		82	201	Yes	High

Recommendations 3

20 high-risk files are shared with more than 18 guests having a public email domain

ADP [Take Action](#)

20 high-risk files are shared with more than 26 guests having a business email domain

ADP [Take Action](#)

13K Accounting & Secret files are not protected against data loss

ADP [Take Action](#)

23K Sensitive files are shared externally

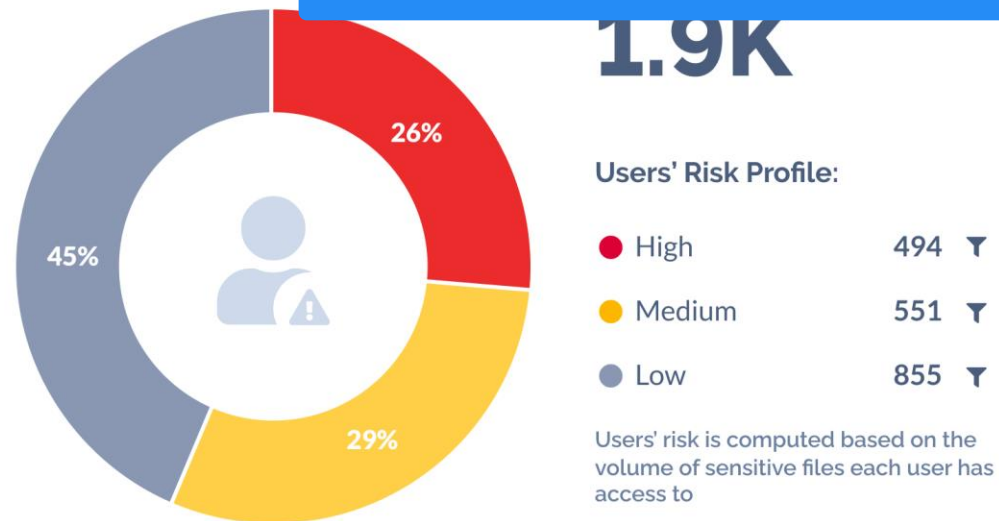
EFS [Take Action](#)

Features



What are your users' risk profiles?

1 Overview on your Organization's Risk Profile by Users



Who are your users?

2 Risk Level of Individual Users

User	Sensitive files	Risk Level
Charles Smith	3.8K	High
Len Lesser	3.6K	High
Peter Parker	3.5K	High
Austin Jones	2.7K	High
Mike Harrison	2.6K	Medium
Peter Parker	2.5K	Medium
Charles Smith	2.4K	Low

3 Recommended Course of Action using our Solutions

- 20 high-risk files are shared with more than 26 guests having a business email domain [Take Action](#)
- 20 high-risk files are shared with more than 26 guests having a business email domain [Take Action](#)
- 13K Accounting & Secret files are not protected against data loss [Take Action](#)
- 23K Sensitive files are shared externally [Take Action](#)

What are your users' files?

Files

95K

Sensitive Files

38K/95K

4 List of Sensitive Files with Key Metrics

Internal and External Access Amount of Personal Data Sensitivity and Risk Level

File	App	Modification Date	Internal Access	External Access	Personal Data	Sensitivity	Risk
Product_roadmap_2021.pdf	Office	12 Jan 2021	1422	152	0	Yes	High
Corporate_card_expenses.xls	Excel	2 Feb 2021	152	50	253	Yes	High
customer_2020_list.xls	Excel	18 Jan 2021	82	201	0	Yes	High

Sales_forecast.ppt		22 Dec 2020	221	53	12	Yes	
Financial_Analysis.doc		17 Nov 2020	182	43	98	Yes	
Board meeting - Project.xls		12 Jan 2021	12	86	0	Yes	
Client profiles.doc		4 Feb 2021	458	4	54	No	
Meeting_notes_Feb2021.ppt		2 Feb 2021	252	2	0	No	
Activities_plan		27 Apr 2020	65	0	49	No	
Operational_process.doc		12 Mar 2021	58	1	12	No	

Where are your users' files stored?

5 Locate Folders with High Amounts Sensitive Files

Folder	Sensitive Files	Total Files
SharePoint/client	11K	124
SharePoint/hr	8K	124
SharePoint/sales	5K	124
OneDrive	4K	124
SharePoint/technology	3K	124
SharePoint/governance	2K	124
SharePoint/admin	1K	124

What are your users' groups?

6 Identify Users' Groups that Access the Most Sensitive Files

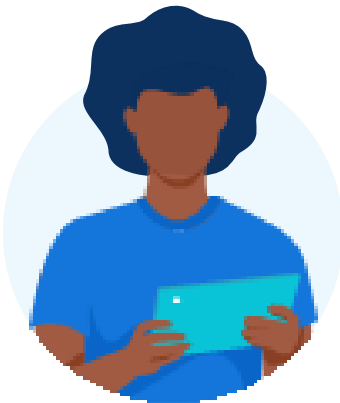
Group	Sensitive Files	Total Files	Total Users	Alert
general_hr	3.4K	138K	852	
sales.uk	3.2K	74K	68	
sales_general	3K	70K	312	
marketing_china	2.8K	800K	121	
marketing_hongkong	2.5K	42.2K	85	
marketing_uk	2K	84K	40	
marketing_singapore	1K	50K	52	

Get Full Visibility of your Users at Risk and Sensitive Data now

Choose from the packages that best suits your needs

Free Trial

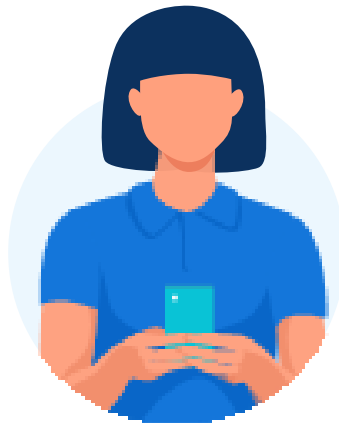
For everyone



2 weeks with no costs

Standard

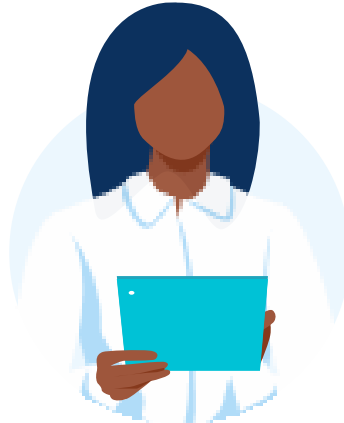
Less than 500 employees



\$375 USD/month

Plus

From 500 to 1000 employees



\$600 USD/month

Advanced

From 1000 to 2000 employees



\$1,128 USD/month

Enterprise

More than 2000 employees



Contact sales@dathena.io