



MinerEye Solutions

Cloud Data Optimization



minereye
See Beyond Data

www.minereye.com



Solutions for:



Data Discovery & Governance

1. Data mapping for dark and unstructured data
2. Automated risk quantification of personal information (PI) and sensitive business information.



Data Privacy Compliance

1. Privacy regulations compliance for every file (GDPR/CCPA/PIPEDA/LGPD/CMMC, etc.)
2. D/SAR compliance with the right of deletion and FOIA requests for personal information & rectification regulations
3. Compliance with data minimization regulations



Cloud Data Optimization

1. Smart cloud migration
2. Data retention



Data Protection & Secure Collaboration

1. Data protection in file sharing – Granular classification and policy enforcement
2. Data protection policy modeling with virtual multiple labeling



Incident Response & Breach Notification

1. Compromised PI and business information data one-time reporting
2. Continuous PI and business Information risk assessment



Cloud Data Optimization

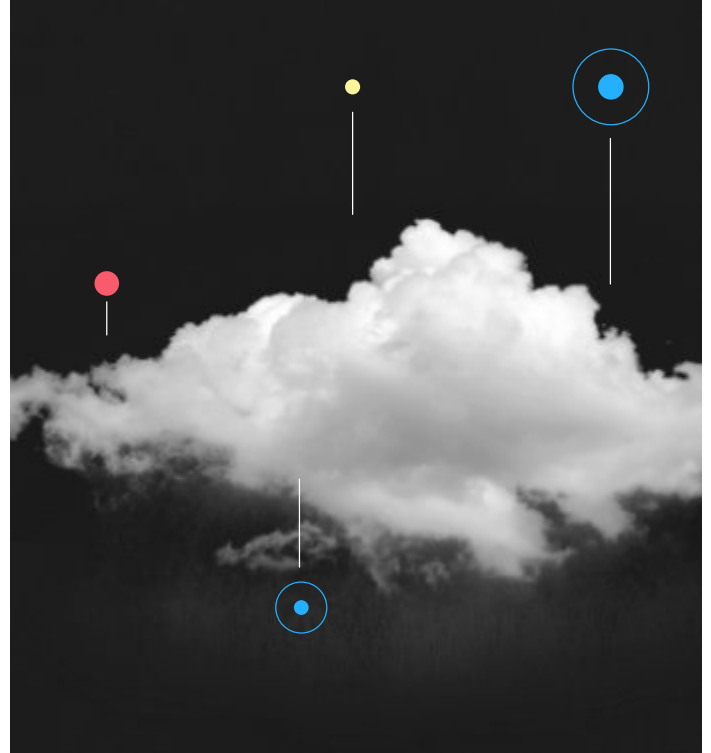
Problem

Even industries which once dismissed the cloud, today are planning their cloud migration. However, despite their moving forward, CIOs still have concerns around the high cost of moving every file, not to mention, the ensuing management of retaining many versions and duplicates of the same file. The seemingly unsurmountable task of “sifting” through every employee’s PC and deciding which files should be moved is unfathomable for most. Clearly, concerns around adopting cloud infrastructure may be mitigated by performing an AI-based scanning and cleaning of redundant, obsolete and trivial (ROT) files.

However, given that many of these files are located in an organization’s unstructured data repository, few technologies are capable of picking up the information in these files. Even fewer can quickly and automatically determine the worthiness of retaining the file. The role of AI here is not only to identify duplicates and near duplicates, but also to tell the story around each file cluster, to understand the frequency of the file’s use and to identify the user, to know how the file was used, and in which business issues and processes it was involved. All this information supports CIOs to make insightful decisions as to which files are worth migrating and their optimal destinations.

The far-reaching benefits of multi-dimensional analysis

With multi-dimensional analysis, you can dissect your dark data on a granular level, allowing you to implement granular data retention policies. You succeed in minimizing what files you need to move to the cloud, and which data should be retained. This process makes file management much more efficient once in the cloud.



MinerEye’s Cloud Data Optimization Solutions

Based on its AI-powered DataTracker™ product, MinerEye offers two solutions for optimizing your cloud use, both prior to and after migration.

1. Smart Cloud Migration – Save money now, better data management later

Provides automated and continual analysis and categorization of data that identifies ROT (repetitive, obsolete, and trivial) file data that should not move to the cloud. This scan that only takes minutes, handling over 10 terabytes of data, saves your organization between 30-50% on migration, cloud storage and processing costs.

2. Data Retention – Comply with retention regulations

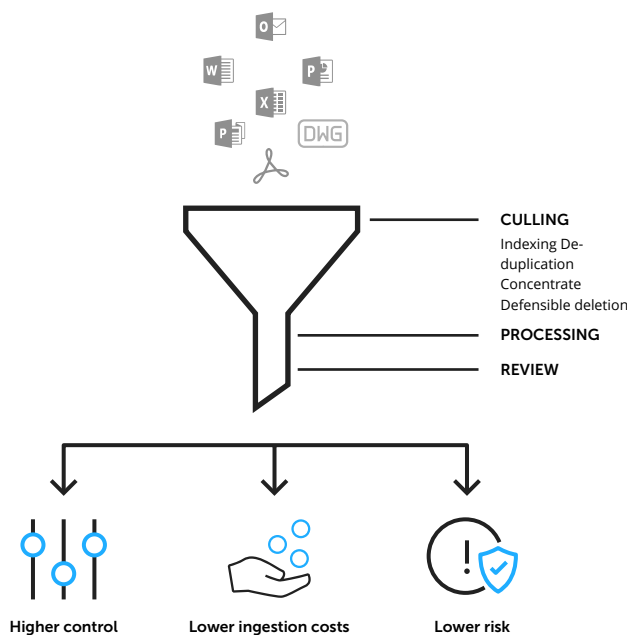
Emerging and evolving privacy regulations often require immediate action. MinerEye helps you minimize PI data that has accumulated over time that can potentially leak or be compromised through a ransomware attack.



Innovative Data Segregation & Data Protection in the Cloud

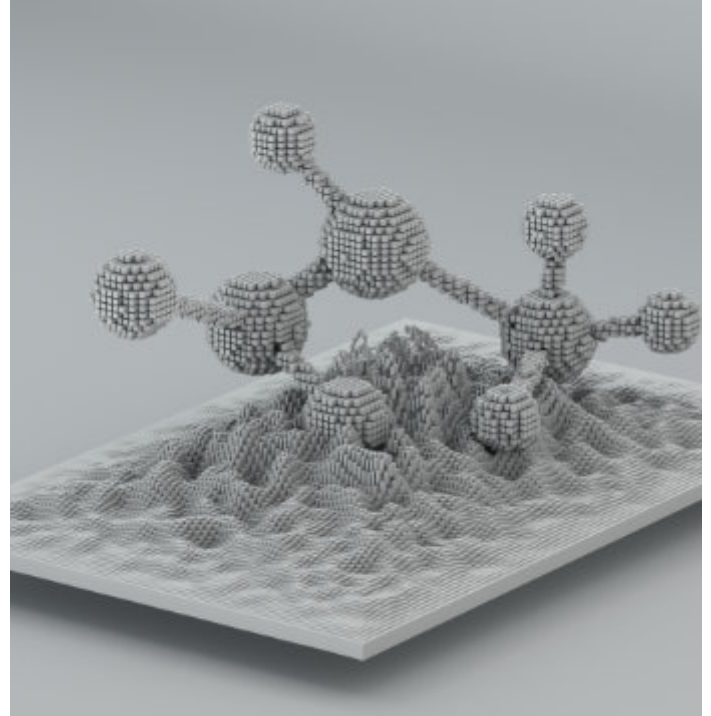
In addition, MinerEye enables data segregation in the cloud, when necessary for regulatory compliance for privacy or other requirements. MinerEye also offers multiple, virtual labeling to protect all sensitive data before moving to the cloud and after migration.

MinerEye minimizes obsolete and redundant data to optimize unstructured data management.



MinerEye Technology

MinerEye leverages its proprietary technology fusing computer vision and machine learning. This powerful combination clusters information on files and documents to highlight mass de-duplication and near duplication before and during migration. The technology provides the user with enough insights and automated recommendations to make a quick decision on what to do with historic data that has no ownership. It can even automate the move, delete or archive to provide ongoing and incremental smart management of data storing taking into consideration data retention policies and privacy regulations. MinerEye leverages cloud APIs to continuously analyze the data on a granular level and to categorize the data for optimal retention.

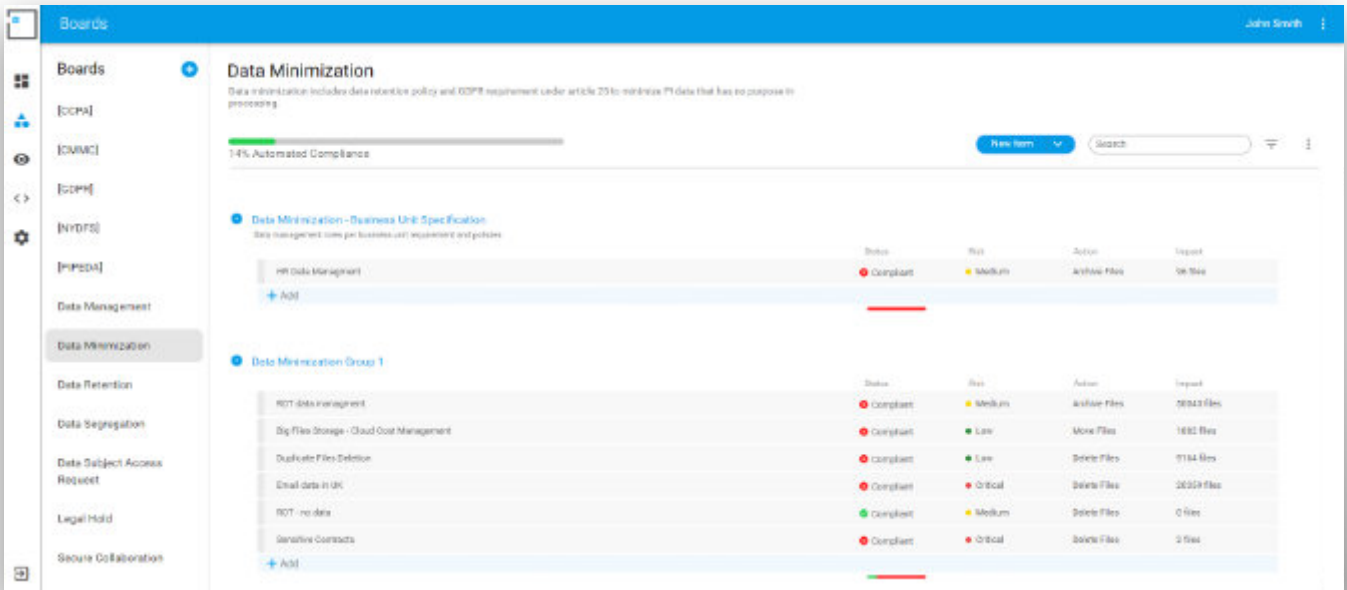


How your organization profits from a smart cloud solution

Benefits:

- Cost savings in smart cloud migration: 80% reduction of experts' time to sort through data and report on redundancy and privacy risks such as breach disclosure and ransomware incident response augmentation
- Low TOC: Accumulative savings in automated continual updates
- Agile & rapid deployment
- Agent-less and fast results
- Hybrid deployment option: On-prem and cloud
- Automated compliance to emerging and evolving privacy laws

Data Minimization



Who we are

MinerEye has developed a disruptive, award winning AI technology that tracks sensitive data wherever it resides and whatever form it takes.

MinerEye has reimagined sensitive data security by offering a completely new way to look at unstructured data and identify it by its detailed entities. Employing computer vision to illuminate the masses of "dark data" that exist in organizational data repositories and in the cloud, MinerEye illuminates areas that would otherwise remain dark and invisible.

MinerEye enables organizations to overcome the information governance, privacy and protection challenges. Its Interpretive AI™, machine learning and computer vision automatically scans, analyzes, virtually labels and indexes and categorizes unstructured and dark data contained in organizations' data repositories. MinerEye's customers may be found across financial, IT, manufacturing and other verticals worldwide.

[REQUEST A DEMO](#)

www.minereye.com
info@minereye.com