

PLEASE READ: CUSTOMER PRESENTATION TEMPLATE

HOW TO USE:

The co-branded Customer Presentation is intended to outline your company/solution and to articulate the value that you and Microsoft bring together when deploying a joint solution.

This template and the guidance provided on each slide should make it easy for you to rapidly build a quality story. Each slide contains place-holder text and an image that explains how to make your pitch. To the right of each slide, you will also see a text box that provides additional guidance relevant to that slide (you may need to view the slides at 80% to see these notes to the right).

As part of your GTM Services, our editing team will review the content you've provided to ensure a cohesive story flow and that co-branding guidelines are met, as well as a check for grammar, spelling, formatting, and overall positioning of your solution. You can use the additional text box to the right of each slide (mentioned above) to communicate notes for the Microsoft editor as well.

Upon approval, we will upload your presentation in OCP GTM. We recommend that you also include this in your Commercial Marketplace offer, using the guidance found [here](#). When the third-party brand leads, as in this case, you must still follow the logo sizing recommendations. Learn how to build your logo [here](#). Creative assets and images should otherwise follow your company's brand guidelines.

BEST PRACTICES:

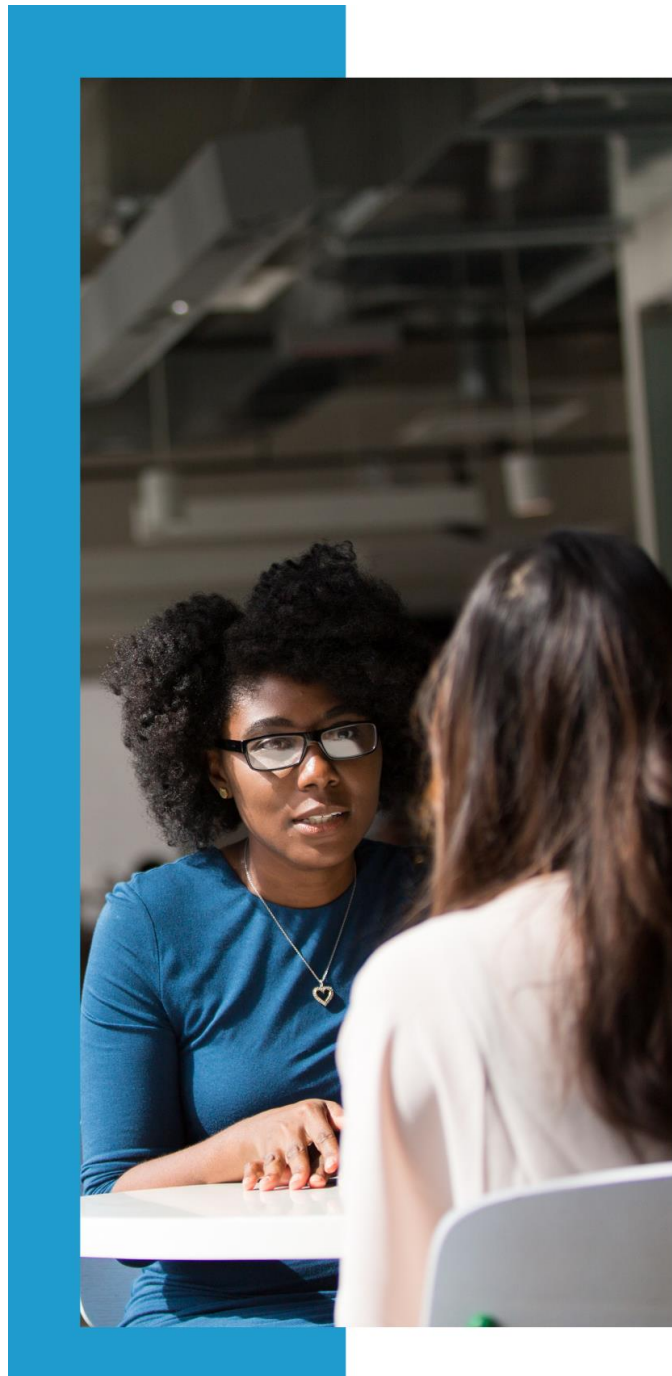
- Be sure to tailor your content to Microsoft sellers and potential new customers/partners by speaking directly to your target audience with “you,” “your team”, and similar phrases with an active, engaging voice.
- Presentation should not be longer than 10 slides (6-8 slides are recommended).
- When adding your own images, be sure to use high-resolution graphics and images (minimum 96 pixels per inch for online viewing).
- Most importantly, be clear and concise! Avoid long sentences and leave plenty of white space. The presentation should be able to stand on its own with a clear flow and without additional context.

We know that providing this content takes time and effort, but the stories we tell together will be stronger for it.

BEYOND INTRANET

EMPLOYEE ONBOARDING ADD-IN

<https://www.beyondintranet.com/employeeonboarding>



EMPLOYEE ONBOARDING

with SharePoint built in capabilities.

Start using Remote Onboarding & Offboarding App backed by world-class support today.



Available on
Microsoft AppSource

HR Management: Tracking onboarding tasks manually with huge paperwork is tedious and time taking.

The Employee Onboarding SharePoint Add-in helps busy HR professionals and hiring managers spend less time on paperwork, so you can focus your energy on successfully onboarding new employees.



EMPLOYEE ONBOARDING & OFFBOARDING

Built for remote teams to simplify Their Onboarding and Offboarding Processes.

CHALLENGES

Employee Onboarding SharePoint add-in helps Hiring managers who are buried in paperwork because their company uses an outdated hiring process. The add-in eliminates the need to paperwork and physical presence so that you can focus your energy on successfully onboarding new employees.

IDEAL SOLUTION

Beyond Intranet offers you a Free to kick-start Employee Onboarding and Offboarding add-in with SharePoint capabilities. You can keep your new employees engaged throughout their tenure whilst keeping the team members involved in successful onboarding through task automation.

DESIRED OUTCOMES

Never worry about complicated onboarding tasks involving multiple stakeholders again. Say goodbye to interruptions and never rely on others to manage tedious onboarding and offboarding ever again.

THE IDEAL EMPLOYEE ONBOARDING CHECKLIST



EASY
INFORMATION
ACCESS



ANALYTICAL
DASHBOARD



EMPLOYEE
OFFBOARDING

Beyond Intranet

Employee Onboarding

Remote Onboarding & Offboarding Application with SharePoint capabilities, specifically built for today's remote workforce, delivering seamless hiring experiences.

COLLABORATION WITH REMOTE TEAMS

Easily adapt access to a task and revoke rights without hampering the process.

EASY TO TRAIN AND ADOPT

No coding efforts required, get clear guidance on each step to take actions awaiting attention.

FLEXIBLE & COST EFFECTIVE

Close tasks faster than ever - Manage hardware and software requirements on SharePoint to save costs and support productivity.

Beyond Intranet Employee Onboarding SharePoint add-in

Employee Onboarding add-in is built on SharePoint, a Microsoft flagship service and it comes with a set of pre-configured SharePoint sites that Microsoft provides and can be easily deployed into your Microsoft 365 tenant whilst keeping your corporate branding in place.



EMPLOYEE ONBOARDING

Streamline remote staffing
process using Employee
Onboarding and Offboarding.

MICROSOFT OUTLOOK PLUG-IN

Get a task overview, update progress status task overview and close a task with one click all in a dedicated Outlook pane.

MICROSOFT TEAMS PLUG-IN

Stay collaborated throughout without having to leave Microsoft Teams to manage your tasks on Employee Onboarding add-in.

REPORTING WITH POWER BI

Get an analytical dashboard to have a birds eye view on existing onboarding/offboarding and export/import data on Power BI.

Customer success: Matthew Kibildis, Streamlined Onboarding Process

“Employee Onboarding app is an extremely helpful app that our organization uses for streamlining and keeping an audit trail for our onboarding process. The support is also top notch and quickly helped us solve our issue.”



IMPROVED EMPLOYEE RETENTION

50% Increase in overall employee retention with embedded engagement and automation.

35% INCREASE IN HR PRODUCTIVITY

The Human Resources were able to save valuable time spent on coordination and interaction.

70% LESS PAPERWORK

The Employee Onboarding add-in eliminated the need of paper in onboarding and offboarding processes.

[Book a Free Demo for Beyond Intranet's Employee Onboarding Add-in]

Get a free trial: [\[contact@beyondintranet.com\]](mailto:contact@beyondintranet.com)

Call for more information: [+1-954.317.3944]

Ask a question via email: [\[contact@beyondintranet.com\]](mailto:contact@beyondintranet.com)

Learn more:

[\[https://www.beyondintranet.com/employeeonboarding\]](https://www.beyondintranet.com/employeeonboarding)

[Link to your Microsoft Commercial Marketplace offer](#)



Microsoft Partner
Gold Application Development
Silver Collaboration and Content
Silver Data Platform



EMPLOYEE ONBOARDING

Available on AppSource



Schedule a FREE Demo
contact@beyondintranet.com