



# Tanium Platform

Give security and IT operations teams the power to secure, control and manage millions of endpoints in real-time.



## Overview

Tanium is the first and only enterprise platform to secure and manage endpoints regardless of their number or location. Tanium's patented linear-chain architecture turbocharges security and operations tasks so that actions previously taking hours or even days can be accomplished in real-time. With the Tanium Platform, security and IT operations teams can ask any question about their environment in plain English, retrieve accurate and complete data, and immediately take any corrective action directly on the endpoint.

Vivid data visualization capabilities make it easier to measure and communicate insights across the environment. Extensible and open, the Tanium Platform contains a variety of ready-to-use connectors and its open APIs allow seamless integration of endpoint data with other IT systems. With minimal infrastructure that scales to support millions of endpoints, the Tanium Platform dramatically reduces the total cost of ownership while also being resilient to rapid rates of change inherent in today's complex network environments.

## At a Glance

Ask any question, take any action in plain English

Hunt proactively for new vulnerabilities and threats

Find file and process anomalies  
Search for vulnerable applications by name or version

Monitor and remediate endpoint agent health

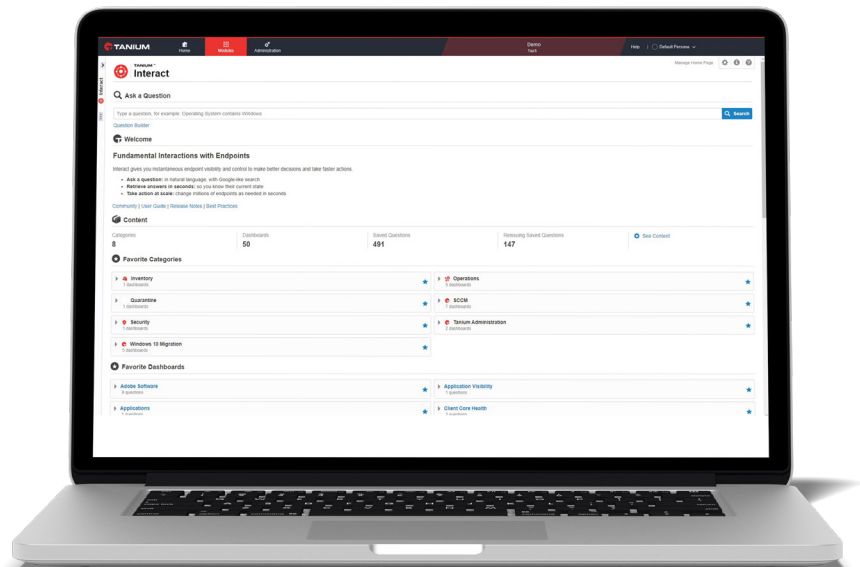
Create custom sensors to monitor any endpoint property

Address ad-hoc security and management needs, today and in the future

## Key components of the Tanium Platform

### Tanium Interact

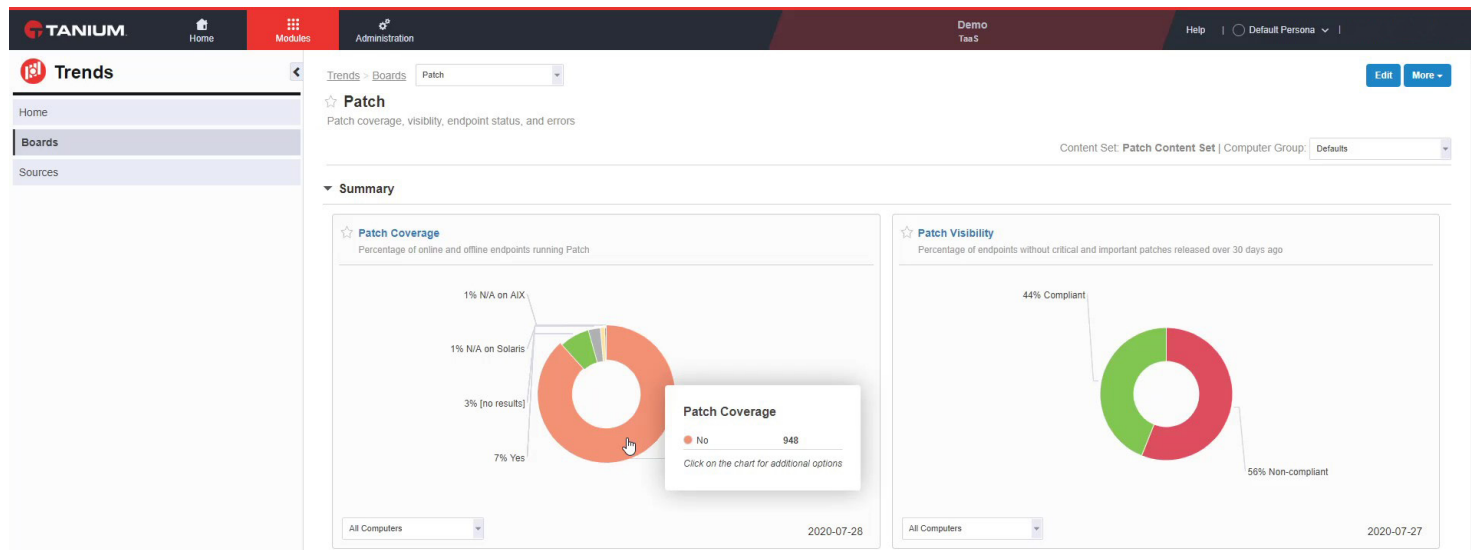
Tanium Platform provides a natural language parser, allowing questions to be structured in plain English and enabling users of all skill levels. Organizations can use Interact to ask dynamic questions, examine results, take action, save questions, and review dashboards. Give security and IT operations teams the power to secure, control and manage millions of endpoints in real-time. Tanium Platform is extensible and supports industry-standard scripting languages, so it's easy to gather any data or support any change across endpoints as needed. With Tanium Authoring, security and IT professionals can create new Sensors and Packages that extend Tanium use cases



and customize them for particular objectives. For example, when a new application comes into use, an author can write a Sensor script that maintains data about the installed or running application and a Package script that takes action to stop or start it. Sensors use familiar, industry-standard scripting languages rather than arcane, proprietary coding syntax.

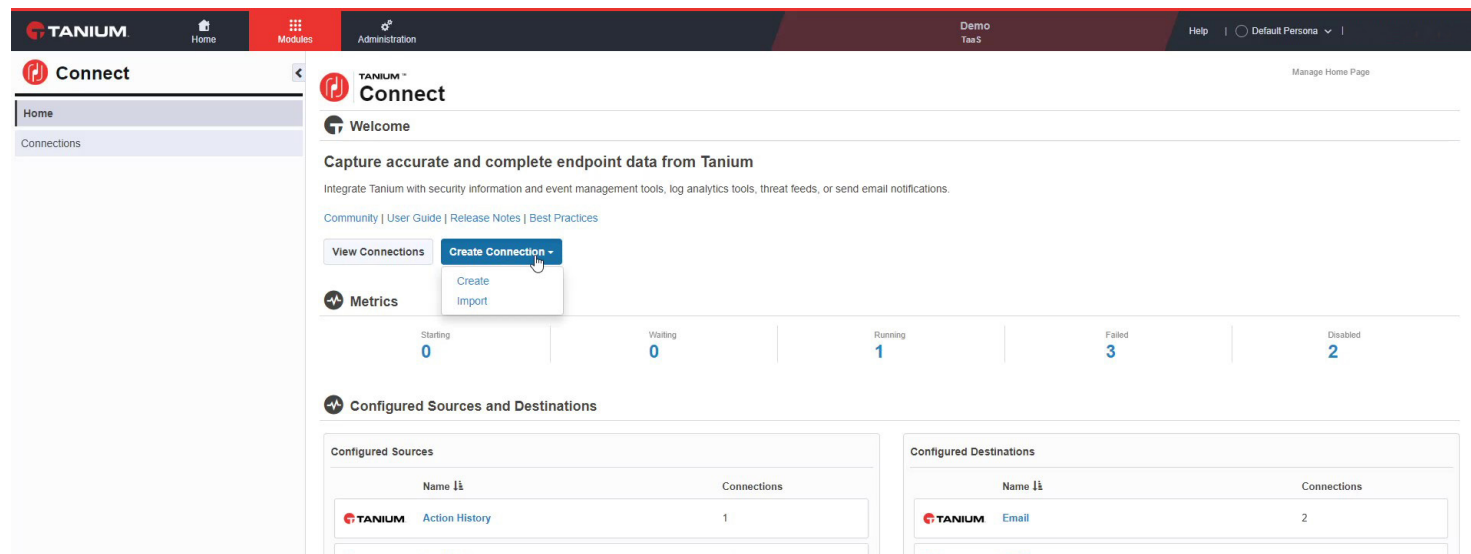
## Tanium Trends

Tanium Trends enables continuous measurement and reporting on key security and operations metrics, such as patches and vulnerabilities, encryption, firewall status, hardware and software inventory, uptime, and disk usage. Tanium Trends reporting is customizable. Teams can report on any single metric or combination of metrics that are meaningful based on the needs of the organization. With drill-down capabilities and tight integration into the Tanium Platform, Tanium Trends also enables faster insights and the ability to pivot instantly to remediate issues.



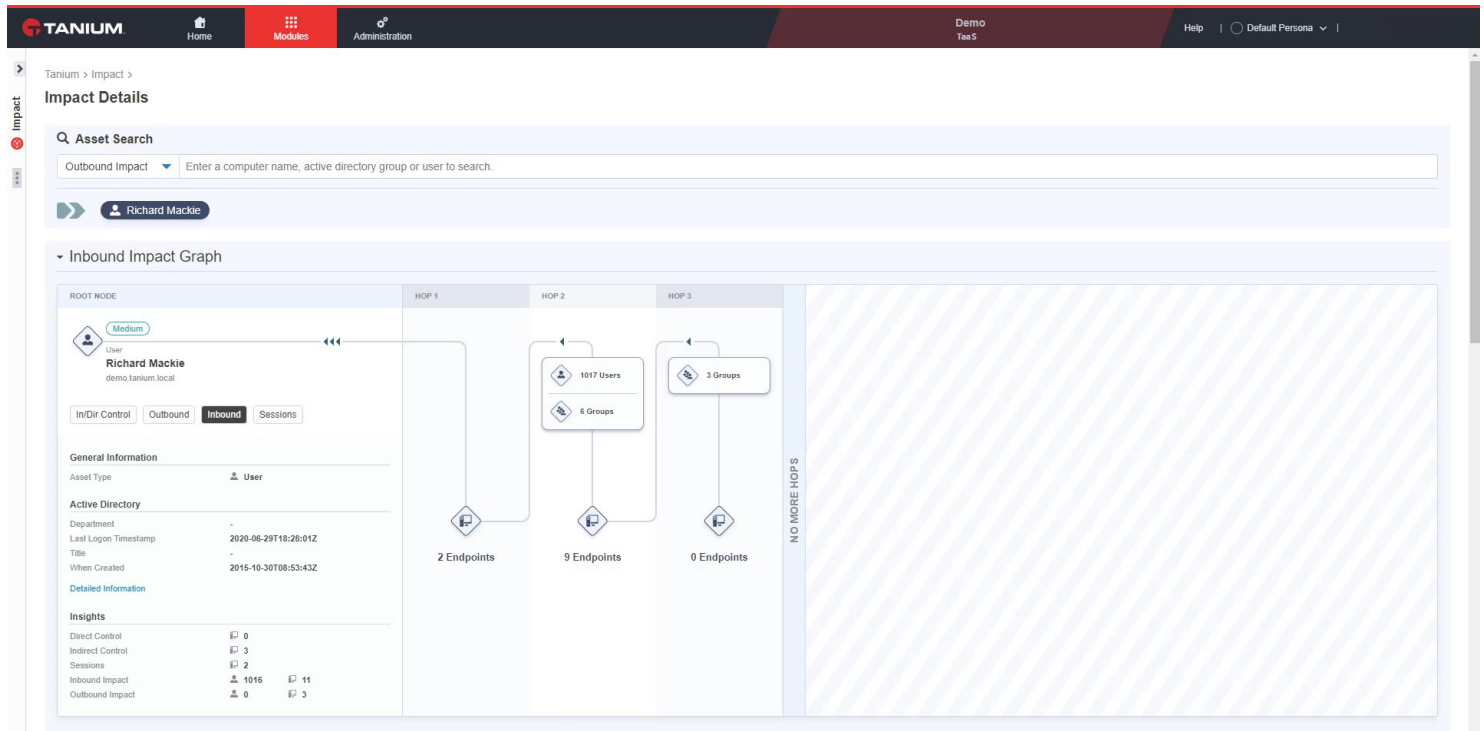
## Tanium Connect

The Tanium Connect integration layer enriches external or third-party systems with up-to-the-second data from every endpoint in the environment. Tanium Connect can feed endpoint data into systems such as SIEMs, log analytic tools, help desk ticketing systems, CMDBs and big data clusters. By addressing the narrow focus and timeliness of the data typically available to these systems, Tanium Connect enables shared visibility across teams and dramatically reduces resolution time for even the most complex challenges in securing and managing endpoints at scale.



## Tanium Impact

Tanium Impact offers a simplified view of the complex issue of privileges and access rights across assets within the enterprise. This comprehensive picture enables both security and operations teams to assess the risk of lateral movement in an environment from multiple perspectives. Impact's data-driven approach harnesses the real-time collection capabilities of the Tanium Platform to arrive at a risk score which can provide context to security alerts, compliance activities, or patching. Addressing privilege escalation and lateral movement risk in this way enables IT teams to prioritize and proactively fix issues before they potentially become full disruptions.



## Tanium Identity

Tanium Identity enables direct integration with Identity and Access Management (IAM) solutions to ensure devices connecting to the cloud and zero-trust networks are managed and secure. Tanium Identity extends industry-leading endpoint visibility into the identity and access process, providing key endpoint metrics, such as last system patch time or a summary of critical vulnerabilities, directly to IAM solutions. This allows organizations to further define which devices can access their networks and verify those devices meet a specific set of security criteria.

## About Us

[Tanium](https://www.tanium.com) offers endpoint management and security that is built for the world's most demanding IT environments. Many of the world's largest and most sophisticated organizations, including nearly half of the Fortune 100, top retailers and financial institutions, and several branches of the US Armed Forces rely on Tanium to make confident decisions, operate efficiently and effectively, and remain resilient against disruption. Tanium has been named to the Forbes Cloud 100 list of "Top 100 Private Companies in Cloud Computing" for five consecutive years and ranks 10th on FORTUNE's list of the "100 Best Medium Workplaces." Visit us at [www.tanium.com](https://www.tanium.com) and follow us on [LinkedIn](https://www.linkedin.com/company/tanium) and [Twitter](https://twitter.com/tanium).