



OEA- Open Education Analytics

10-Week Implementation



Gold Data Analytics
Gold Project and Portfolio Management
Gold Application Development
Gold Collaboration and Content
Gold Cloud Platform
Gold Cloud Productivity



Why Spyglass MTG?

GOLD

Partner for over
15 years

OVER **15** YEARS

Average Onshore
Consulting
Experience

FAST TRACK

FastTrack Ready
Partner

UP TO **90%**

Repeat
Engagements

CSP

Direct Cloud
Solution Provider

Spyglass is Flexible, Dedicated and

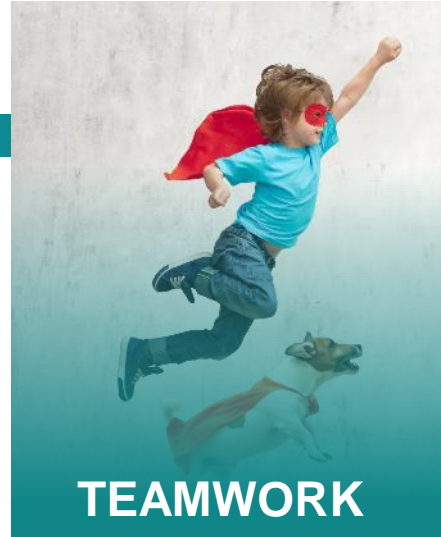
100%

Committed to our Customer's
Success

Foundation based on Shared Values



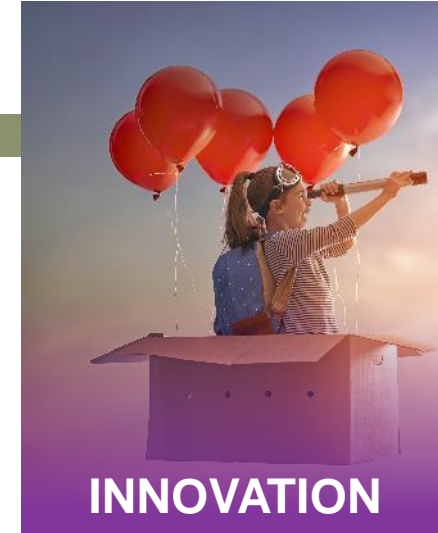
- Treat everyone with care and respect
- Assume positive intent
- Communicate openly and honestly
- Demonstrate high integrity



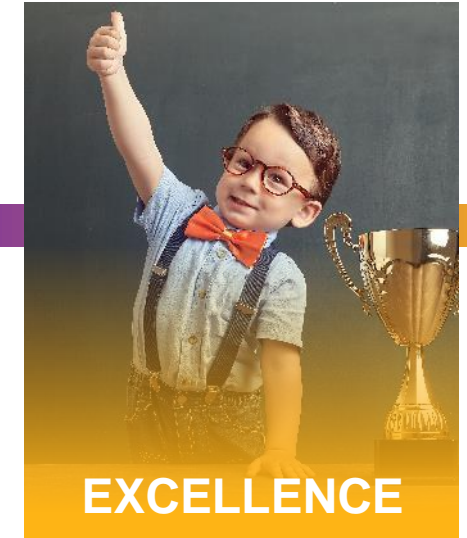
- Support one another
- Be accountable
- Put team success before individual success



- Bring your enthusiasm
- True passion is infectious
- Have a "Can Do" spirit



- Identify opportunities for improvement
- Be creative
- Be thought leaders



- Exceed expectations
- Strive to be better every day
- Take pride in our work
- Deliver on our commitments

Value Proposition – Proximity, Expertise & Focus



Headquarters:
Lincoln, RI



Regionally focused on New
England for 24+ years



Office in
Chennai, India



300+ Consultants,
Local and Offshore

15+ years experience for
onshore consultants



Microsoft
Partner



Gold Data Analytics
Gold Project and Portfolio Management
Gold Application Development
Gold Collaboration and Content
Gold Cloud Platform
Gold Cloud Productivity

Solely focused on Microsoft
Technologies

15+ Years Microsoft Gold
Partner

13 Active Microsoft Gold
and Silver Competencies



The Problem

Due to the current circumstances, remote learning is far more prominent than traditional in-person classes. While this is a necessary move to protect both students' and teachers' health, this is likely a trend that will continue far past the pandemic. However, keeping students engaged with online classes and receiving the support they need from their instructors is difficult. Dropout rates are at an all time high, and engagement rates seem to be dropping daily.

Many online learning programs serve the purpose of hosting classes; however, they lack in providing any real analytics that give insight into student engagement.





Our Solution

Spyglass can help Higher Education institutions implement analytics reporting systems to aid in better understanding the overall engagement and learning patterns of students. We are an OEA Advanced Partner with Microsoft, so we have the expertise you need! We are able to seamlessly integrate with many learning management systems, like Blackboard or Nexus LMS, so that you can continue to utilize your current systems while receiving the analytics you need. We will connect your systems to Azure to build analytics around the information that your system already collects. By viewing these reports in a simple dashboard, institutions will be able to see crucial student patterns, engagement rates, and more.

Knowledge is power- set yourself up with all of the information you need to help your students and staff succeed!

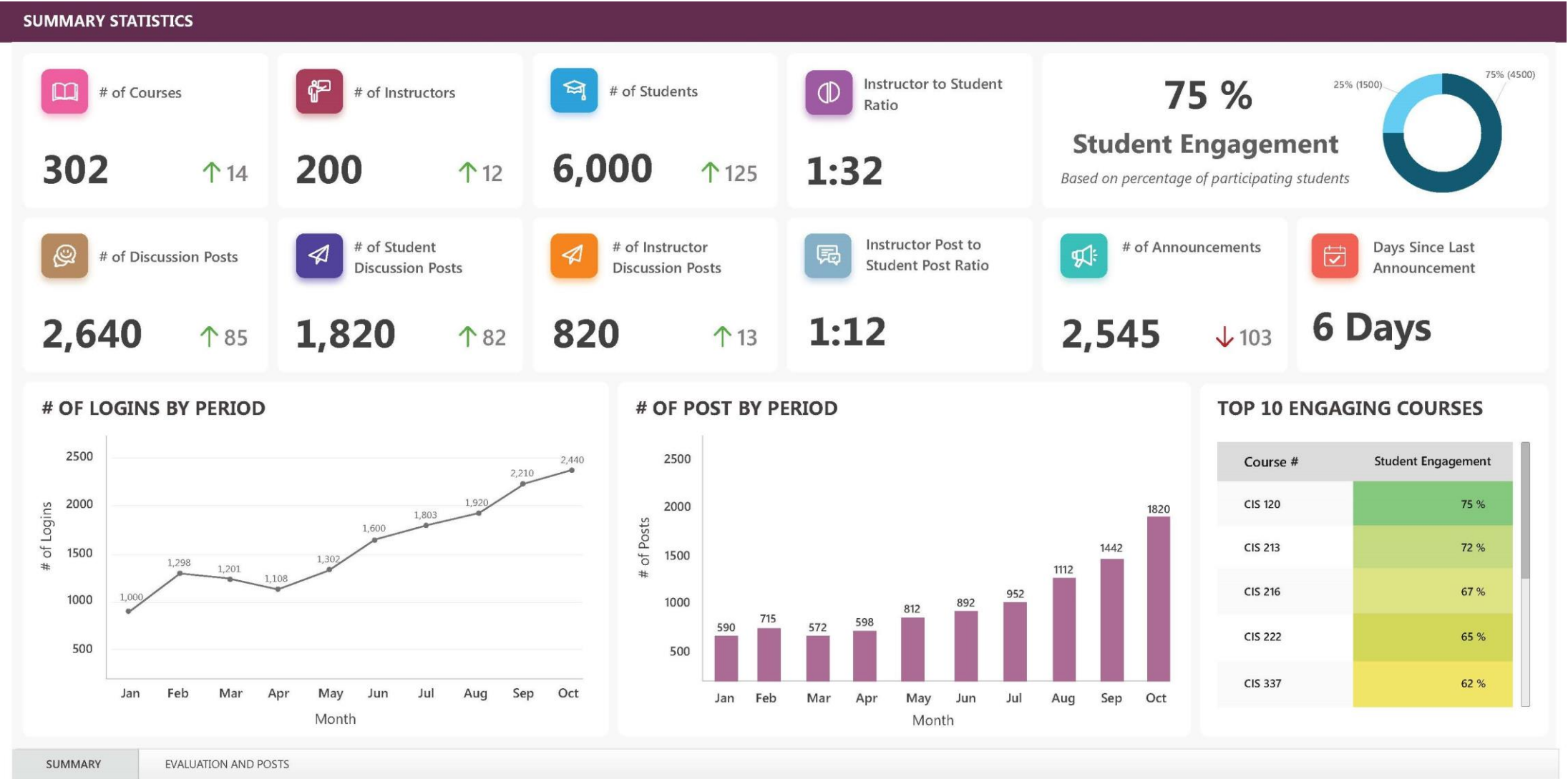


Common Use Case Problems in Education:

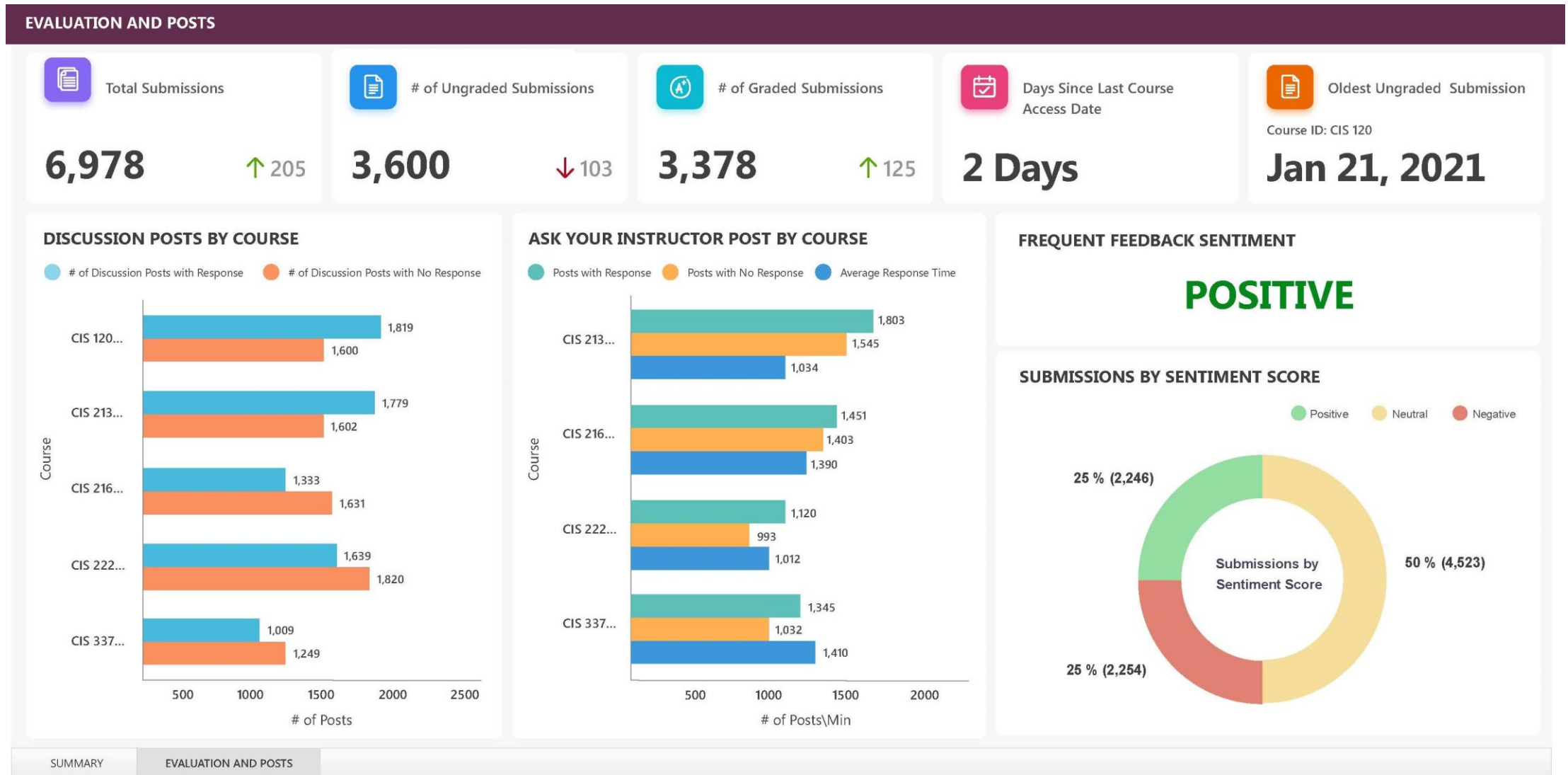
- Digital Access: How do we ensure all students in our system have access to our digital learning applications and platforms when they are learning remotely?
- Digital Learning Insights: How are students using and behaving in digital learning platforms and applications, and how does that behavior relate to key learning outcomes?
- Program Evaluation and Monitoring: Is a new education program or policy such as a professional learning program being implemented as planned, and does the program have measurable impact on learning or education outcomes?
- State and National Education Reporting: How do we make our city/state/country education data and reporting more real time and actionable?
- Predicting At Risk and Vulnerable Students: How do we use our data to prevent learning dis-engagement, drop-outs, or harm to students?
- Learner Records: How do we use all our data to develop more holistic insights into student learning and better support students in representing their learning beyond an individual school, such as in applications for other schools or for jobs?
- Personalization: How do we enable every student to develop a more personalized learning experience, driven by their stage of learning progress, interests, and goals?



HEAR Analytics Reporting Dashboard- Example



OEA Reporting Dashboard- Example



10-Week Implementation



Approach, Agenda & Deliverables

Stage 1: Initiation

- Project Baseline / Information Gathering
- Approach and Timeline
- Access Requirements
- Envisioning Session and the role of a modern analytics platform





Stage 2: Planning & Design

- Project Planning
- Technical Implementation Strategy
- Cloud Adoption Strategy Review
- Requirements Finalization including:
 - Cost Analysis
 - Data Sources such as:
 - Blackboard
 - Nexus LMS
 - Nexus Analytics
 - Campus Management
 - Canvas
 - Advanced Analytics Use Case Review
 - Sentiment Analysis
 - Quality Scores
 - Forecasting
 - Performance Expectations
 - Workload Management
 - User Experience
 - Response Times
 - Data Refresh Rate
 - Testing Requirements
 - Security Requirements
 - Management Plane Access
 - Private vs Public Networking
 - Data Plane Access
 - Data Row Level Security
 - External Consumption
 - Compliance (PII, PHI)
 - Administration Requirements
 - Support Requirements
- Review the Synapse Azure Blueprint Accelerator for data platform modernization
- Design new Business Intelligence Insights
- Solution Review and Sign off

Stage 3: Execution

- Build
 - Modify and Deploy Synapse Azure Blueprint Accelerator
Deploys environment to specifications including:
 - Azure Networking
 - Azure Storage
 - Azure Synapse Workspace
 - Data Pipelines
 - Log Analytics
 - Reporting Services
 - Runtime Services
 - Compute Services
 - ML Services
 - Etc.
 - Build & Implement source data sourcing pipelines
 - Build & Implement data aggregation pipelines
 - Build & Implement advanced analytics pipelines¹²
 - Build & Implement Azure cost management automation
 - Implement Azure Cost Management Budgets
 - Build & Implement supporting Power BI Model with aggregations and measures
 - Plan and execute solution testing
 - Integrate source control (Azure DevOps)





Stage 4: Adoption

- Solution Knowledge Transfer
- Resource Technical Training
- Go-Live support
- Envision and Implement ongoing cloud and data governance
- Review additional scenarios and develop roadmap to the next level of maturity!

Stage 5: Closure

Deliverables:

- Technical Discovery & Planning Doc
- Data Architecture Diagrams
- TCO Hosting Analysis - Azure
- High Level Requirements Document
- Blueprint Modern Data Platform (Synapse) Deployment
- Data Integration Pipelines
- Cost Automation Pipeline
- Advanced Analytics Pipelines
- Power BI Reporting Model
- Deployed Integration runtime clusters if needed
- Source Code (Infrastructure as code, Scripts, Pipelines)
- Go-live production pipeline support
- Knowledge Transfer Session
- Solution Document
- Post-Project Review, Acceptance and Signoff
- Documentation Archive
- Long-term Support/Enhancement Strategy – Spyglass 365





Thank You

info@spyglassmtg.com