

The logo for EDART features the letters 'ED' and 'RT' in a white, sans-serif font. Between 'ED' and 'RT' is a bar chart with four vertical bars of increasing height, colored red, yellow, green, and blue from left to right. The entire logo is set against a dark brown background with a subtle gradient and a dark grey vertical strip on the right side.

EDART

Educational Data Analysis & Reporting Tool

REPORTS

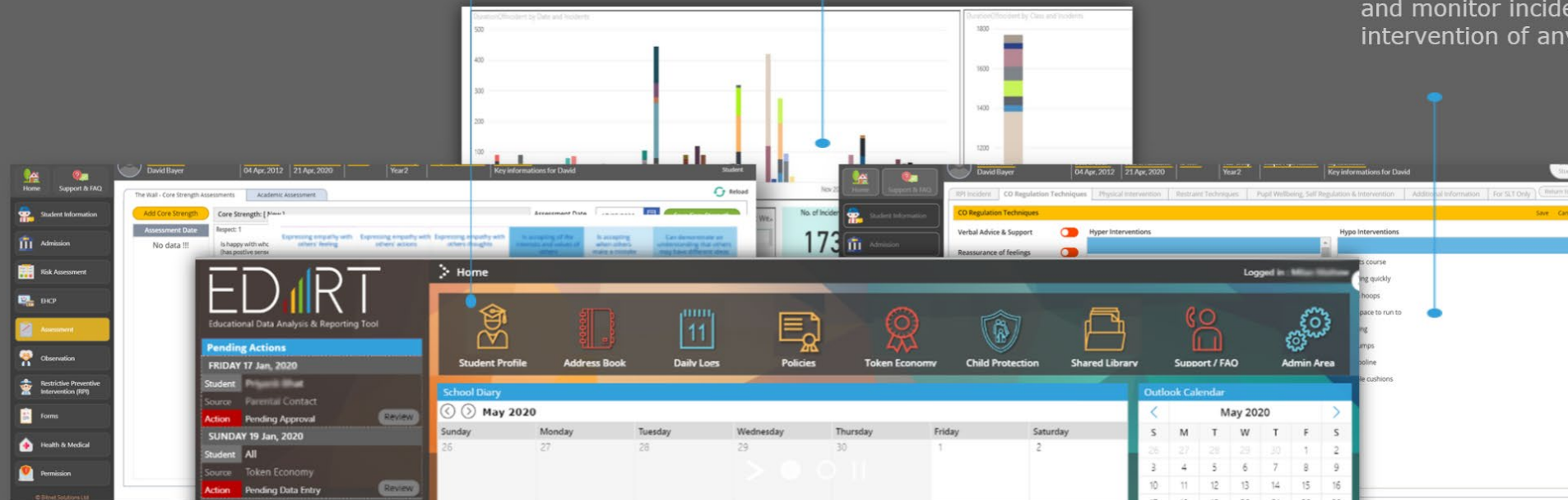
STUDENT PROFILE

A modular, one-stop dashboard summarising all information relating to a pupil - thus integrating all key functions to guarantee an accurate student record.

Utilise AI technology, to generate automated assessment & progress reporting dashboard to centralise, analyse and interrogate individual pupil requirements data.

RESTRICTIVE PHYSICAL INTERVENTION

Efficient recording of SafeHold incidents allow Senior Leadership Team to review and monitor incidents, to enable quick intervention of any identified concerns.



6 CORE STRENGTH ASSESSMENT

Assessment of each pupil's Social and behavioural learning using 6 Core Strengths assessment, which focuses on emotional and social aspects of learning.

REWARD SYSTEM

Use EDART's Token Economy System to record and reward each pupil's (with SEMH - Social Emotional Mental Health needs) behavioural and social progress on a daily basis.

CHILD PROTECTION

The Child Protection Management System is designed to record and track critical information, to allow staff to intervene in safeguarding matters.

The screenshot displays the EDART software interface. At the top, there is a navigation bar with icons for Student Profile, Address Book, Daily Logs, Policies, Token Economy, Child Protection, Shared Library, Support / FAO, and Admin Area. Below this, there are several data visualization components:

- Core Strengths Assessment:** A table showing assessment results for a student named David Bayer. The table includes columns for Assessment Date, Core Strength, and Assessment Points. The assessment points are color-coded: green for 'Respect: 1', yellow for 'Tolerance: 1', blue for 'Affiliation: 1', and red for 'Self Regulation: 4'.
- Duration/Incident by Date and Incidents:** A bar chart showing the number of incidents over time, with a blue dot highlighting a specific data point.
- Duration/Incident by Class and Incidents:** A stacked bar chart showing the number of incidents across different classes.
- Child Protection Management System:** A panel on the right side of the interface showing a list of interventions, including 'Circuits course', 'Climbing quickly', 'Hoola hoops', 'Safe space to run to', 'Skipping', 'Star jumps', 'Trampoline', and 'Wobble cushions'.

6 CORE STRENGTH ASSESSMENT

Assessment of each pupil's Social and behavioural learning using 6 Core Strengths assessment, which focuses on emotional and social aspects of learning.



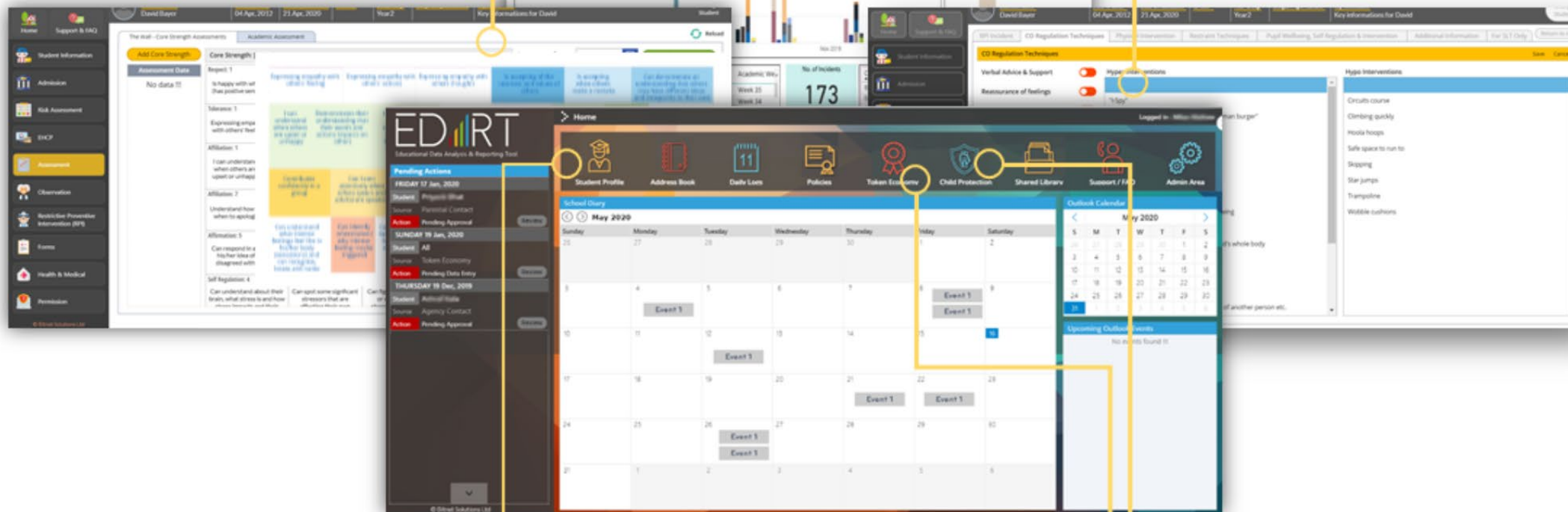
REPORTS

Utilise AI technology, to generate automated assessment & progress reporting dashboard to centralise, analyse and interrogate individual pupil requirements data.



RESTRICTIVE PHYSICAL INTERVENTION

Efficient recording of SafeHold incidents allow Senior Leadership Team to review and monitor incidents, to enable quick intervention of any identified concerns.



A modular, one-stop dashboard summarising all information relating to a pupil - thus integrating all key functions to guarantee an accurate student record.



STUDENT PROFILE

Use EDART's Token Economy System to record and reward each pupil's (with SEMH - Social Emotional Mental Health needs) behavioural and social progress on a daily basis.



REWARD SYSTEM

The Child Protection Management System is designed to record and track critical information, to allow staff to intervene in safeguarding matters.



CHILD PROTECTION