

Power BI Monitoring

Leveraging the Microsoft Power BI Platform by providing an out-of-the box monitoring & governance tracking solution

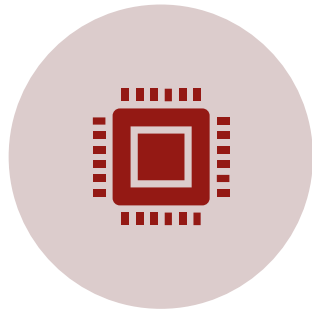


delaware

Power BI Monitoring Drivers



ACCELERATING DATA CULTURE,
MAKING GROWTH
TANGIBLE/VISIBLE IN A GOVERNED
WAY



KEEPING A **CLEAN, LEAN &
GOVERNED PLATFORM,** AVOIDING
OVERHEAD IN TIME & RESOURCES



**MITIGATING SECURITY RISKS & BE
DATA COMPLIANT**



COST-EFFICIENCY OF THE POWER BI
PLATFORM BY ENABLING LICENSE
MANAGEMENT



Power BI Monitoring Solution Overview

Approach

- Facilitating governance on the **Microsoft Power BI platform** by gathering, combining & reporting on data from both Power BI and its linked sources.
- Enabling both IT & Business to **keep track on the accepted governance framework**, with a strong **focus on actionable insights** from the data gathered.

Key features

- **Extraction** of the relevant data from Power BI & its linked sources to a centralized SQL Database.
- **Out-of the box Power BI Report & Model**, customizable dependent on governance framework
- **Track all activities:** On Usage & Growth, for Data Compliance reasons, Security, Report Adoption,...
- **Actionable insights:** License Management (User Activity vs License model), Artifact Management (Keeping the platform clean), Refresh Failures, Red Flag Management (Conventions, Sharing,...)

Scope

- Solution focused on extraction from **Power BI Service** and **Active Directory** source systems.
- Other source systems are not tracked at this point in time. (TBD in subsequent releases)

Current status

- Version 2.1 deployed - enables **automated (infra) deployment** of the solution.
- 2 – 3 release cycles a year



Power BI Monitoring Offering

Fixed package (8K)

Deliverables:

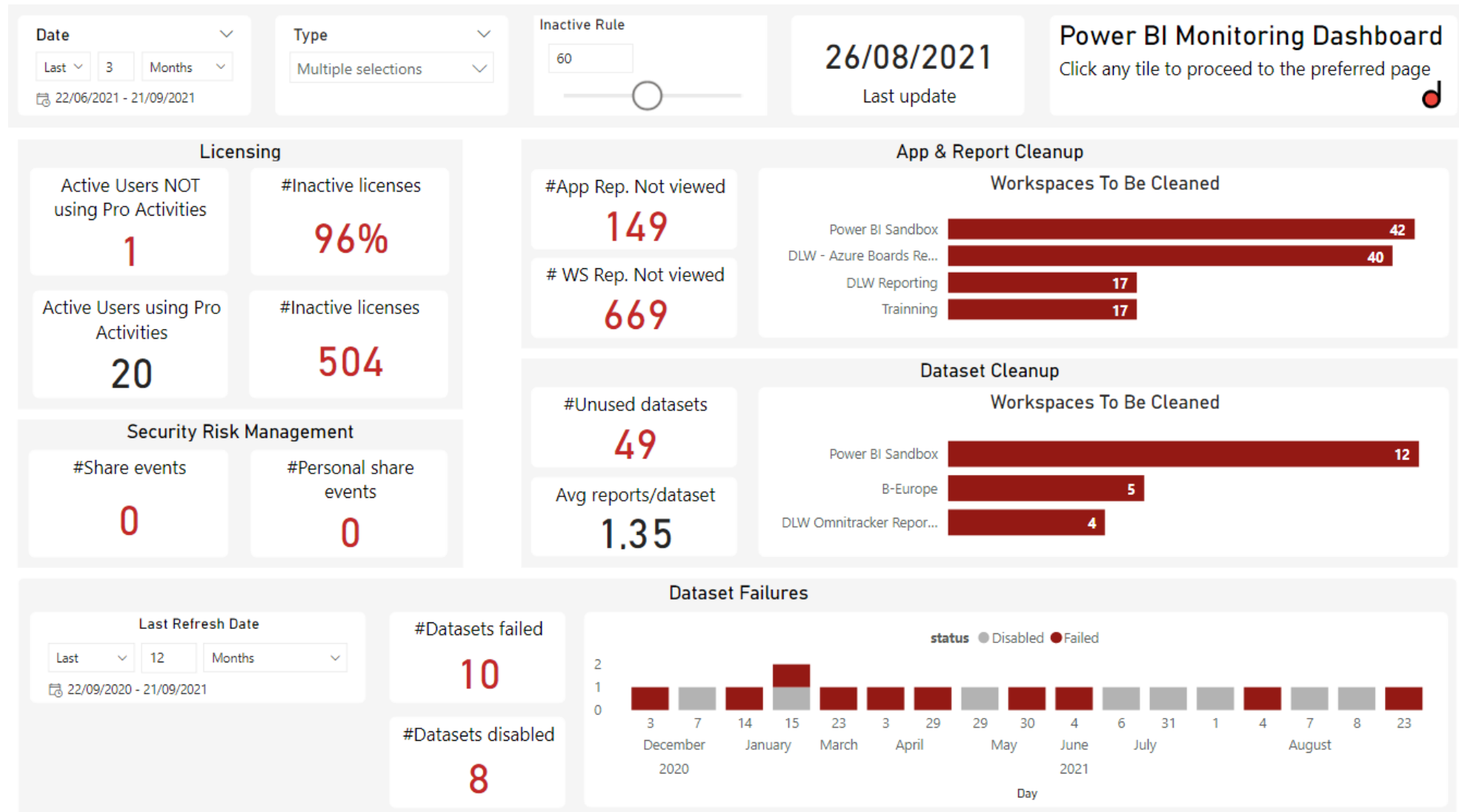
- One-time **Technical Setup**
- **Model & Report creation** in Power BI
- Visualizing **key insights** in Power BI
- **Guide** through the standard package of reports

But... Only seen as a starting point:

- **Possibility to customize** the solution to your accepted framework.
 - On extracted data, model, report...
- **Addition of newly released features** from a subsequent PBI Monitoring version
 - Based on feedback received both internally & from our customer



Key Insights: Actionable overview



we commit. we deliver.



Technical Setup

