

Implement Windows Virtual Desktop (WVD)

Project kick-off

Customer

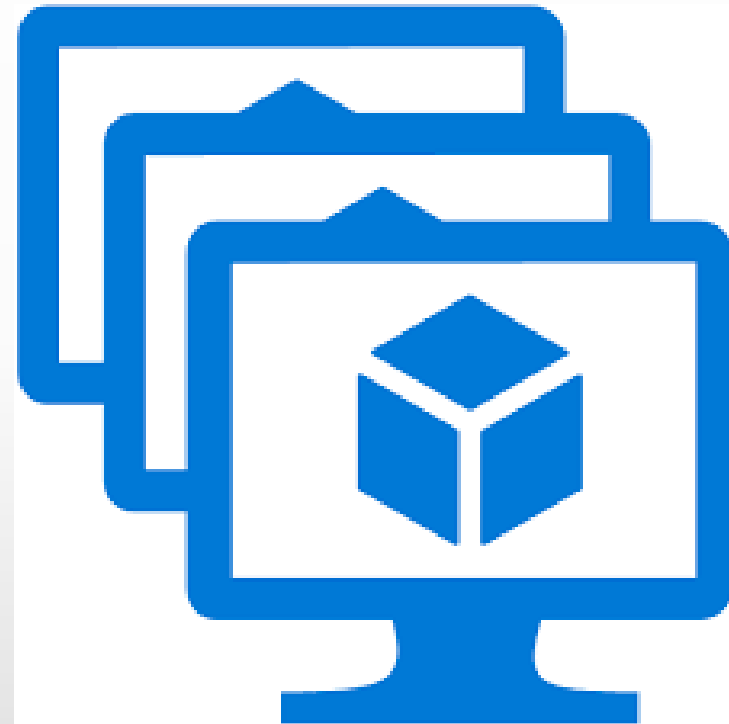


Updated: -

By Siripong Srimongkhon

Agenda

- Objective
- Scope of work
- MA Services
- Project Teams
- Architecture Design
- Project Timeline
- Project ORG
- Project Prerequisites
- Q & A



Objective

1. Implement and Support WVD Project



Scope of work

1. Implement and Support Phase I : Pilot Test

1.1 Review Existing Environment

- ✓ Review network design and requirement with Customer
- ✓ Test and validate VPN connection with Customer
- ✓ Delegate permission

1.2 Create and Test joining AD Domain Controller on Azure

- ✓ Create Azure VM for Testing
- ✓ Validate and test
- ✓ Setup FSLogix Profile Container

1.3 Setup Master Image on Azure (Custom Image)

- ✓ Deploy Azure VM from Standard Image
- ✓ Install Application Needed and Capture 1-3 image(s)
- ✓ Deploy Azure VM from Custom Image
- ✓ Validate and test

1.4 Setup WVD for 50 users

- ✓ Register WVD and Setup Azure WVD Tenant
- ✓ Create WVD host pool for full desktop
- ✓ Create WVD host pool for publish applications
- ✓ Create application group, assign applications and users

1.5 Azure file share Storage account

- ✓ Create Azure file share Storage account
- ✓ Integrate Azure file with AD server
- ✓ Validate and test

1.6 Provide system administration document and user guide

1.7 Training for admin (Per 1 day)



Scope of work (Continue)

2. Provide 2nd Tire Support, 8*5 standby via call and remote support

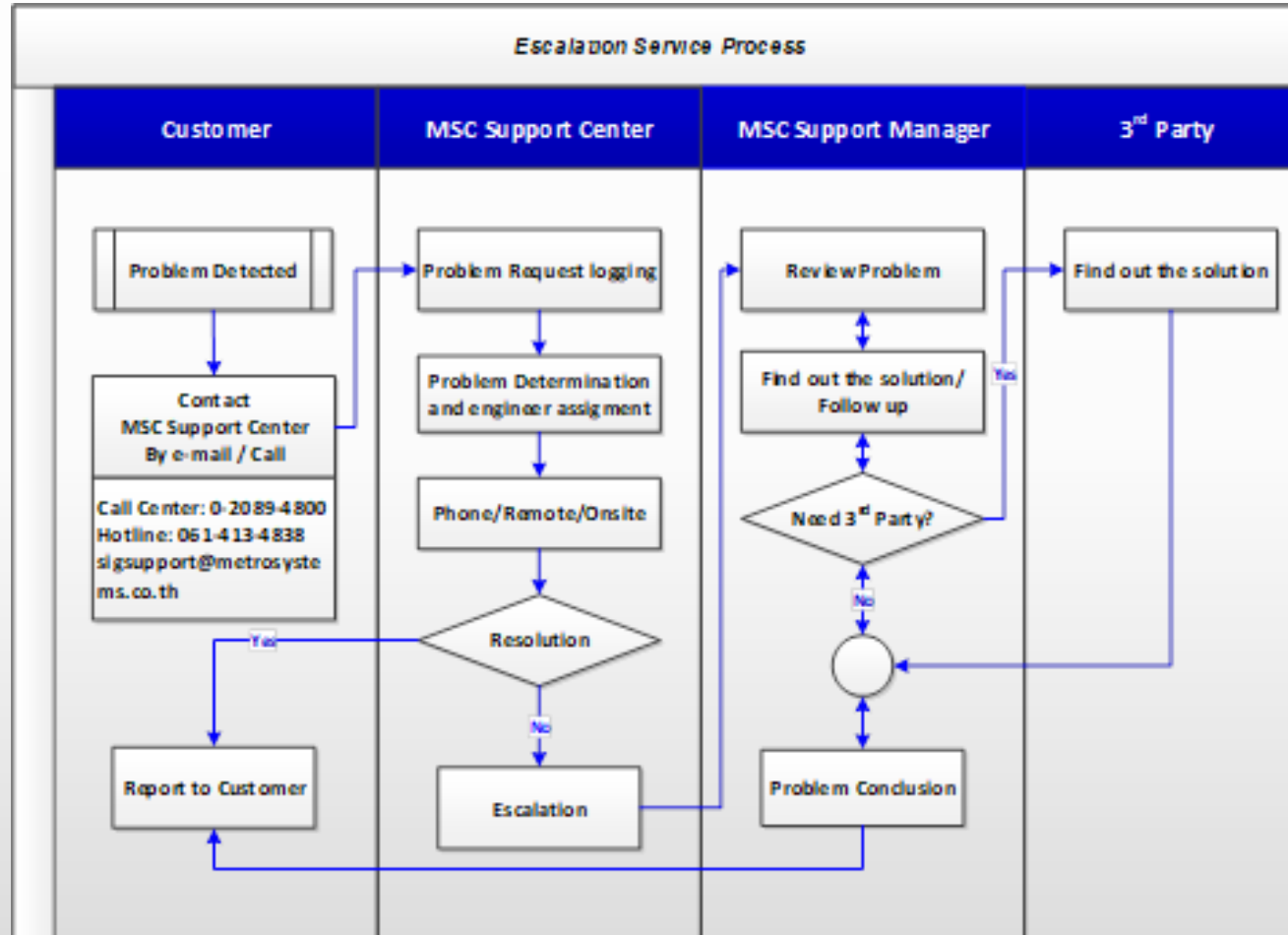
- Microsoft Azure
- Windows Virtual Desktop

2.1 Standard Maintenance

- ✓ Unlimited Phone Support 8*5 via Call Center (during office hour; 8:30-17:00) or Hotline (non-office hour)
- ✓ Troubleshoot and solve problem for Windows Virtual Desktop (WVD)
- ✓ Service Request
- ✓ Support via remote support
- ✓ Administrative Document



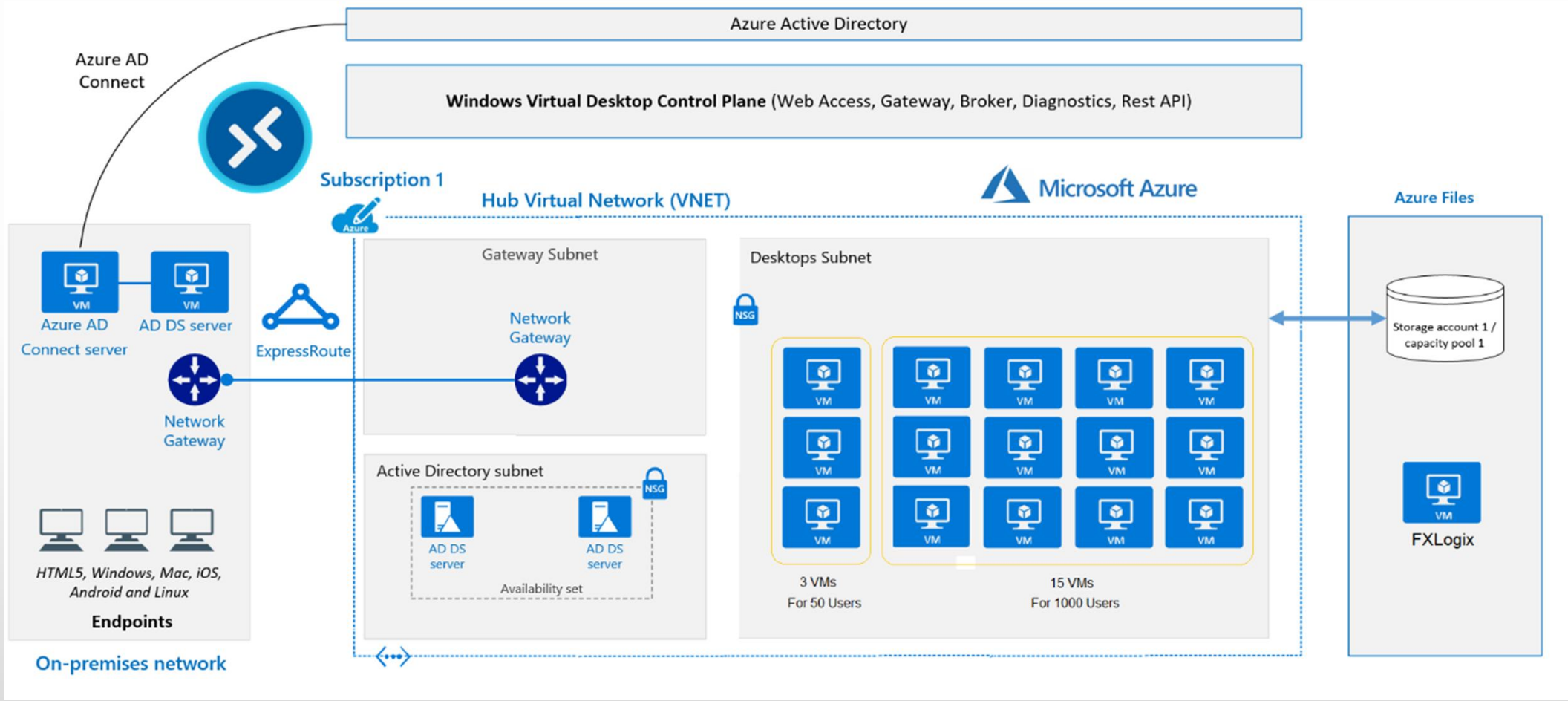
Maintenance Services Escalation Process



Implement Azure Infrastructure

For WVD Solution

Azure WVD Architecture



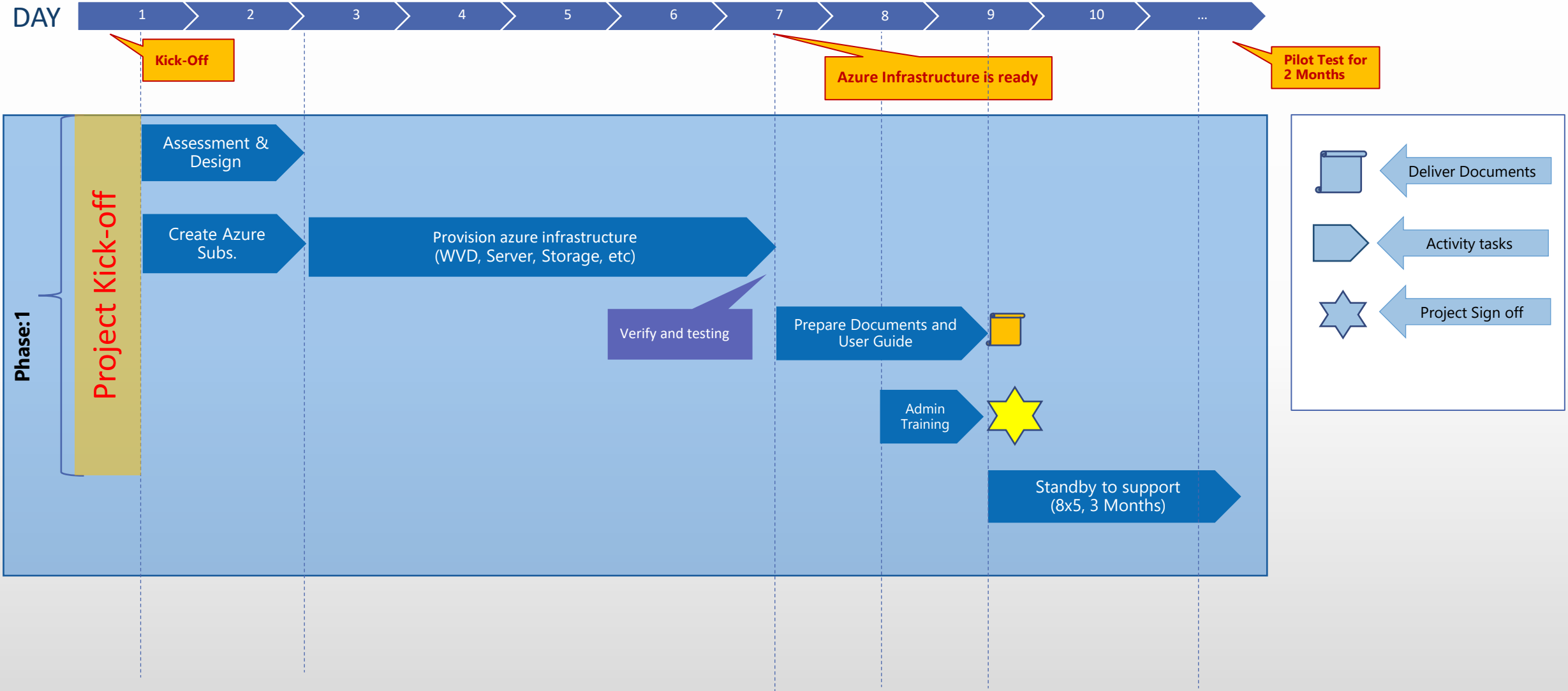
Estimated Azure Cost (Implement / Pilot test)

Phase1: 50 Users

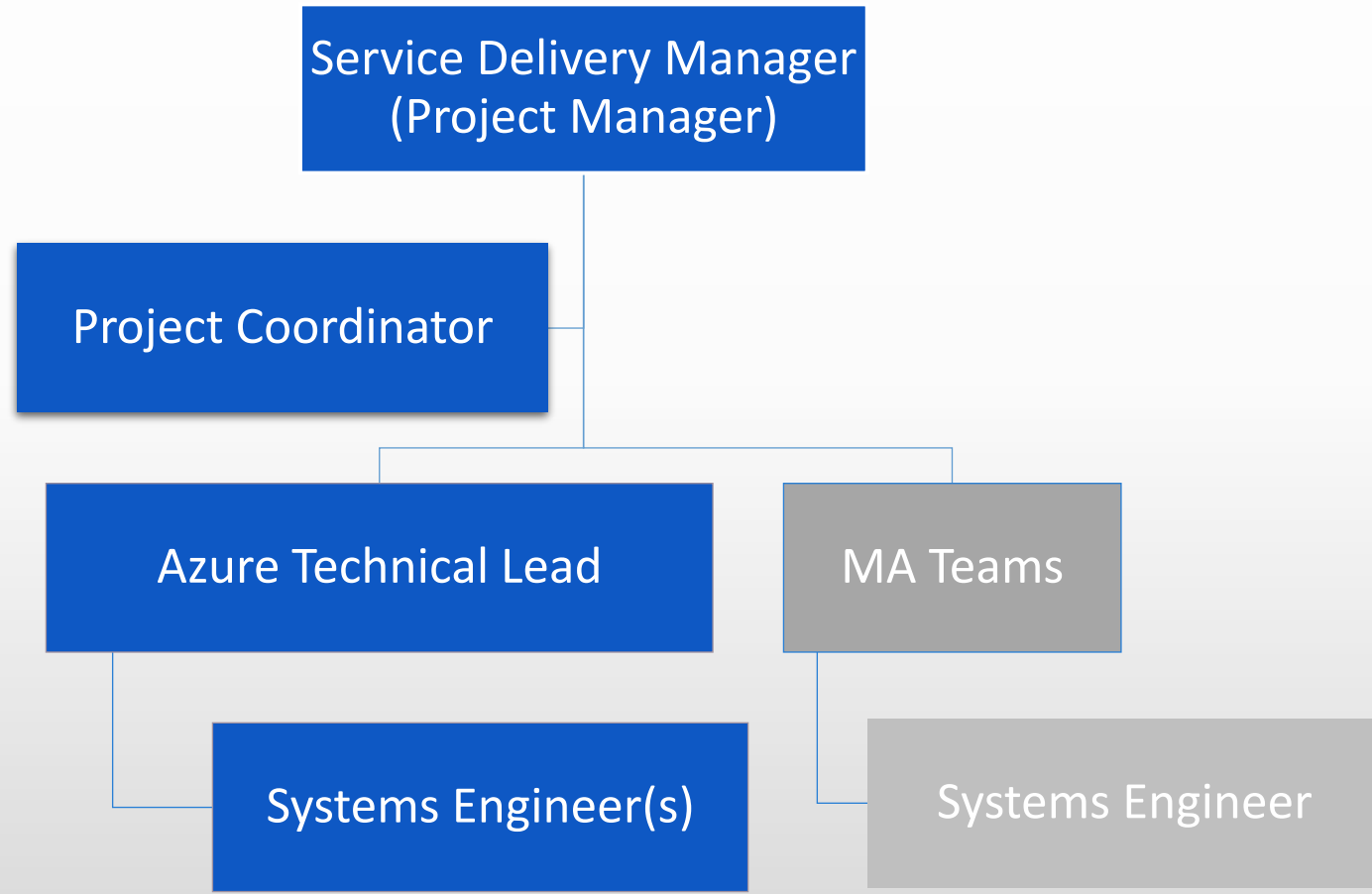
No.	Azure WVD 50 Users +Azure AD DS+ Fslogix Container	Region	Description	Estimated Cost
1	Azure Windows Virtual Desktop	Southeast Asia	Pooled, 50 Users, 0.9 Peak concurrency, 0.05 Off peak concurrency, 730 Usage hours/month, multi-session, medium workload, D4s v3 (4 vCPU(s), 16 GB RAM), x 3	\$ 547.50
	Premium SSD Disk	Southeast Asia	P10 (128 GiB, 500 IOPS) Disks x 3	\$ 59.13
2	Azure VM Fslogix (User Profile Container)	Southeast Asia	B2MS (2 vCPUs, 8 GB RAM) x 730 Hours; Windows – (OS Only); Pay as you go x 1	\$ 83.22
	Premium SSD Disk	Southeast Asia	P15, 100 transaction units; 5 GB Bandwidth x 1	\$ 19.20
			Monthly Total	\$709.05
			Annual Total	\$8,508.60



Project Timeline



Project ORG



Project Team



Siripong Srimongkhon (Pong)

- Senior Technical Consultant Manager/ PM, Consultant
- 0892186689
- siripsri@metrosystems.co.th



Dusit Chuawongngam (Mai)

- Senior Technical Consultant / Consultant
- 0804642878
- dusitchu@metrosystems.co.th



Jaturon Tinpracha (Bank)

- Senior System Engineer/ WVD Implementation and Support
- 0929423989
- jaturtin@metrosystems.co.th



Anon Poochumrab (Non)

- System Engineer/ Support
- 0829900916
- anonpoc@metrosystems.co.th



OUTSOURCING

MA SERVICES

ROLLOUT

CLOUD SERVICES



Project Prerequisites

1. Provide Project Key Contact
2. Provide Azure Subscription and Resource Group
3. Provide permission (Global Admin) to partner for implement WVD
4. Provide Network connection between on-premises and Azure
5. Network Peering between Hub and Spoke (WVD Vnet)
6. Provide Private IP for Azure (minimum Subnet /26)
7. Provide AD for authentication (if require)
8. Provide Address space in the On-premises Network
9. Require backup solution?
10. Provide naming convention for service name, users, etc.



Project Contact

Name	Role	Contact Number	Contact Email



Payment Term / Warranty

Payment Term

Quotation 1: Implement WVD (pilot) | 100% after Issue PO

Warranty

Warranty period 3 Month after Project Sign-Off.

