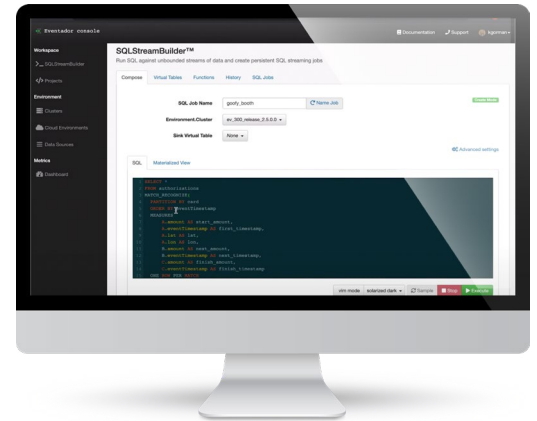


Unlock the Power of Streaming Data

The Eventador Platform provides a high performance, scalable, and robust platform for processing vast amounts of real-time and streaming data into REST data APIs using ANSI SQL and Apache Flink.



Eventador delivers a robust, enterprise-grade streaming solution to:

Stop Waiting for Data



Don't suffer performance losses by putting streaming data into a database. Perform SQL at scale, upstream of costly and slow database infrastructure.

Real-time Views in Apps, Models, & More



Build durable data APIs for use from development to production in apps, notebooks, and frameworks like python & pandas to increase the fidelity of your work.

Tame Massive Amounts of Data



Using Continuous SQL, you can interactively transform, join, and filter the real-time data you need using a language you already know.

Deploy Enterprise-Grade Data Streams



Combine the power of Apache Flink with the simplicity of ANSI SQL for writing, deploying, and managing production-ready streaming jobs.

Deliver Self-Service Streaming Platforms



Empower constituents to build the real-time data pipelines, processors, and data APIs that they need to efficiently create business value.

Integrate With Your Preferred Tooling



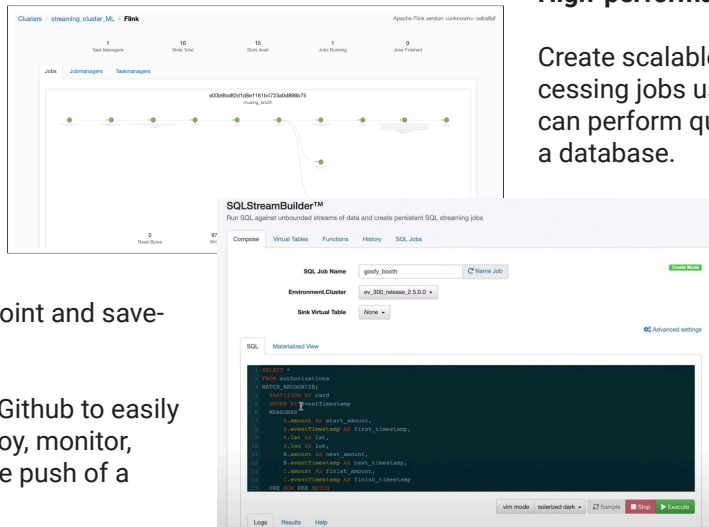
Use the durable REST APIs in your favorite tooling like PowerBI, Tableau, etc, or build your own dashboard using Python, Plotly, or other visualization tools.

Fully Managed Runtime for Apache Flink

Author and deploy fault-tolerant Apache Flink jobs in Java and Scala.

Leverage Apache Flink's robust state management with checkpoint and save-point management.

Seamlessly integrate with Github to easily create, build (maven), deploy, monitor, and scale jobs with a single push of a button.



High-performance Continuous SQL Engine

Create scalable, high-performance data processing jobs using Continuous SQL, so you can perform queries against streams just like a database.

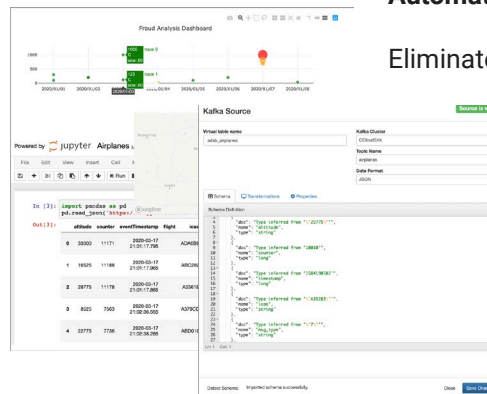
Leverage ANSI SQL syntax, based on Apache Calcite, for the ability to query with the familiar SQL you know.

Get instant feedback on SQL syntax with the SQL parsing engine to interactively author statements.

Durable Data APIs

Materialize data into curated, durable, and reusable REST data APIs that work in your favorite tools and frameworks.

Share the data APIs with your team, get DevOps buy-in, and deploy to production.



Automatic Schema Inference

Eliminate the need for indexing JSON data with automatically inferred and built schemas.

Directly plug into Schema Registry for AVRO data.

Use complex and nested objects without being required to flatten data.

The Eventador Platform: Purpose-Built for Modern Use Cases

Real-time Dashboards for IoT Data



Simplify and accelerate normalizing disparate IoT sensor feeds and aggregate and/or filter these streams to usable data—without having to drain it to a database.

Log Analysis and Network Security



Accelerate building and deploying streaming pipelines to find and react to network events and anomalous patterns in real-time.

Financial and Fraud Alerting Pipelines



Quickly write and deploy production fraud jobs and deliver up-to-the-second results to the dashboard of your choice with a durable REST API.

Real-time Manufacturing Dashboards



Use Continuous SQL to build and deploy stream processing jobs and then continuously materialize critical views of data to dashboards, ML pipelines, and more.