



# HYBRID INTEGRATION ON THE MICROSOFT PLATFORM

**GUIDANCE**

VERSION 1.0 – 13.08.2019

## Hybrid Integration on the Microsoft Platform

---

<b>Why to implement a Hybrid-Integration-Platform (GARTNER).....</b>	<b>1</b>
<b>Hybrid Integration on the Microsoft Platform.....</b>	<b>3</b>
<b>Major Components and Architecture.....</b>	<b>3</b>
<b>General Approach.....</b>	<b>4</b>
<b>Future Proof Hybrid Cloud Strategy .....</b>	<b>5</b>

### Legal notice:

Microsoft, Windows, BizTalk Server, .Net, Silverlight, Azure, LogicApps, ServiceBus are either trademarks or registered trademarks of the Microsoft Corporation. Other product and company names mentioned in this documentation may be trademarks of their respective owners.

QUIBIQ is a trademark of QUIBIQ GmbH, QUIBIF and QUIBIS are products of QUIBIQ GmbH. QUIBIQ holds the exclusive copyright to these and prohibits any use of these by third parties, including of all special versions and individual components, unless it is on the basis of a written license contract.

The information contained in this document reflects the status of the topics in question at the time of publication. QUIBIQ cannot guarantee the accuracy of the information provided here after the date of publication. QUIBIQ therefore provides no guarantee that this document is definitive or conclusive. In particular, QUIBIQ does not guarantee any features of products with this document, unless they are explicitly marked as “guaranteed”.

Owners of this document are obliged to comply with relevant copyright legislation. Irrespective of use, no part of this document may be duplicated or passed on to third parties electronically for any reason without the express written permission of QUIBIQ. This document is intended exclusively for internal use and may not be duplicated or passed on to other companies or external persons.

**WHY TO IMPLEMENT A HYBRID-INTEGRATION-PLATFORM**

“Through 2020, integration work will account for 50% of the time and cost of building a digital platform,” says Massimo Pezzini (<http://www.gartner.com/analyst/9152/Massimo-Pezzini>), research vice president and Gartner fellow. “Moreover, the complex challenges posed by digital business transformation require a radical change in the integration technology platform and in the way organizations deal with integration.”

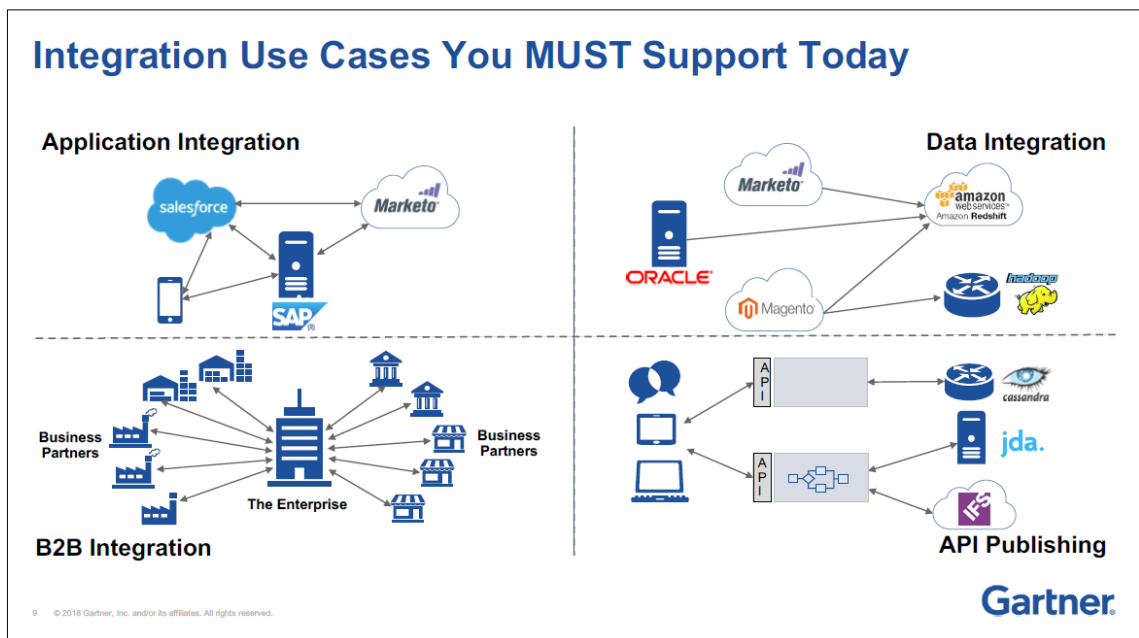


Figure 1: Uses cases to be supported on one platform in the future

Organizations need to move toward what Gartner calls a hybrid integration platform, or HIP. The HIP is the “home” for all functionalities that ensure the smooth integration of multiple digital transformation initiatives in an organization.

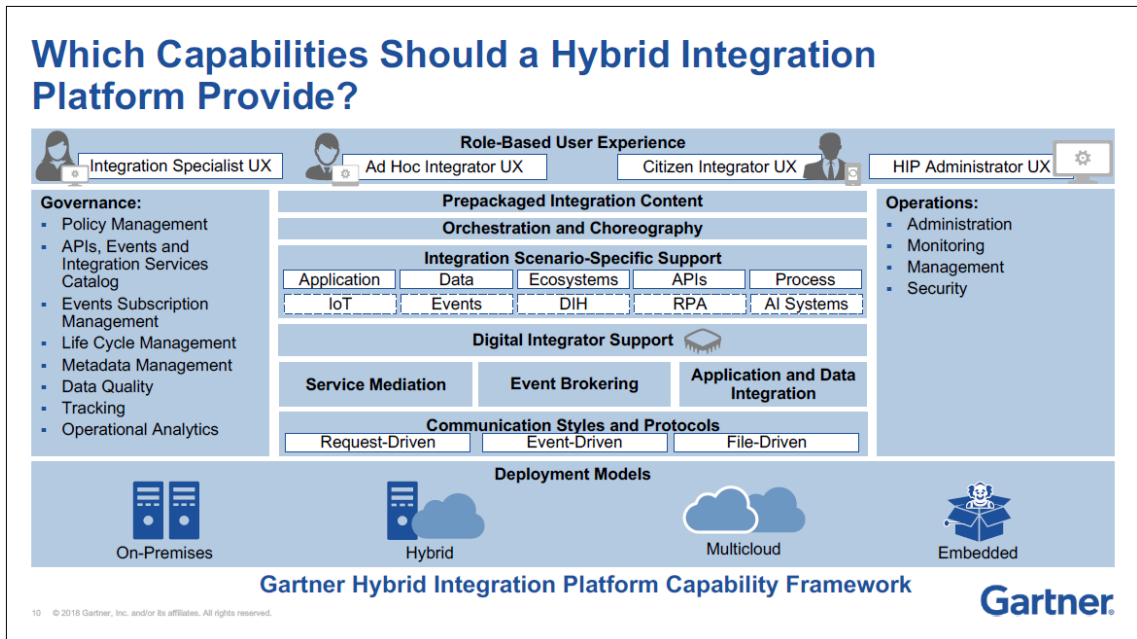


Figure 2: Capabilities of a future proof Hybrid Integration Platform

“These are the basics of why your organization needs an HIP, and how to start planning one,” says Pezzini. You’re unlikely to be alone in your journey. By 2022, Gartner predicts at least 65% of large organizations will have implemented an HIP to power their digital transformation.”

**HYBRID INTEGRATION ON THE MICROSOFT PLATFORM**

Microsoft provides a complete hybrid integration platform to enable customers to fulfill their **current and future needs of data and process integration** in a rapidly changing business environment.

## Microsoft's Hybrid Integration Platform

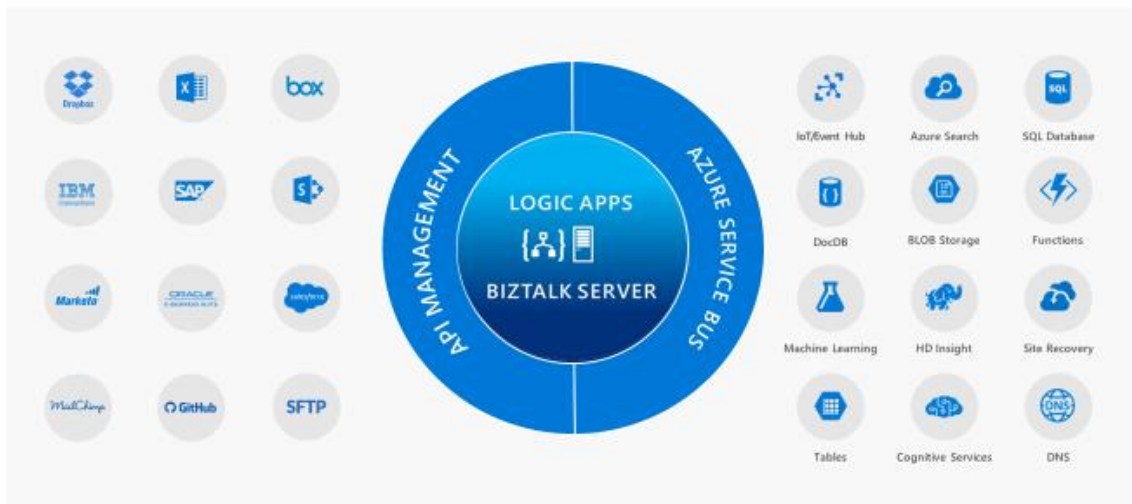


Figure 3: Microsoft Hybrid Integration Platform

The platform bridges on-prem applications, modern SaaS applications, cloud services and the IoT in a seamless way.

**MAJOR COMPONENTS AND ARCHITECTURE**

The major components of the Microsoft Integration Platform are:

- BizTalk Server (on premise or on Azure)
- Azure Logic Apps
- Azure Service Bus
- Azure API Management

These address different needs in integration and can be combined flexibly into robust integration solutions spanning from on premise into the cloud, into mobile scenarios and into the IoT.

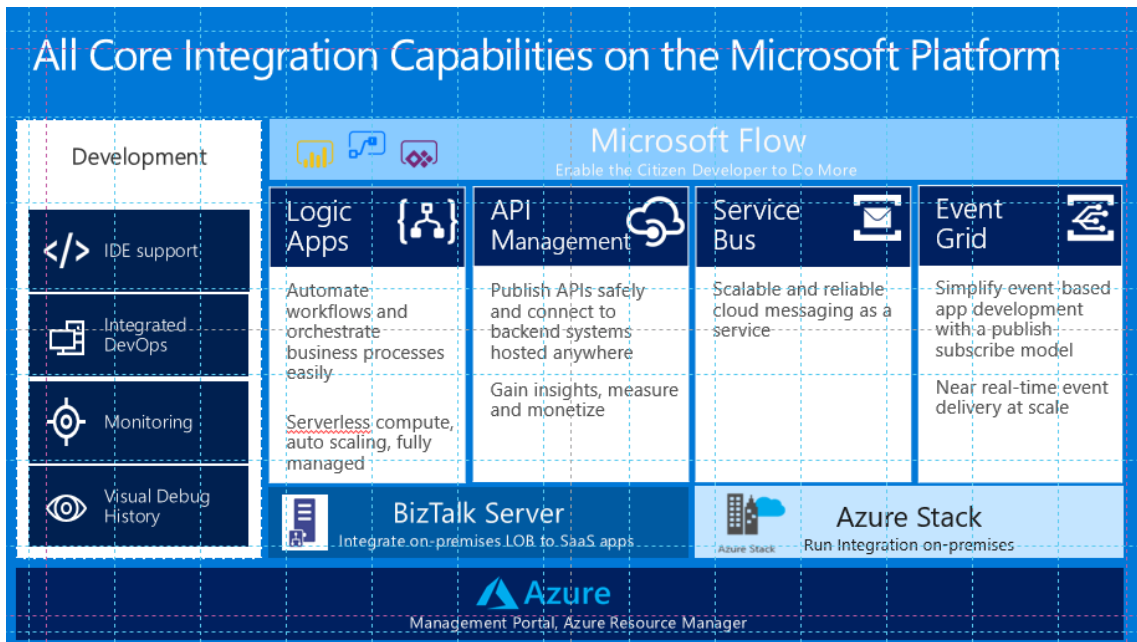


Figure 4: Major Components of the Hybrid Microsoft Integration Platform

For HB, we have put together detailed information on the Microsoft integration platform in a separate presentation (please see appendix 2).

## GENERAL APPROACH

The Hybrid Approach of BizTalk and Azure allows for choosing a flexible solution architecture. Integration use cases involving On Premises systems only typically do not necessarily invoke Azure components. When it comes to use cases where SaaS solutions or any other public API has to be addressed, using Azure functionality can speed up implementation efforts and decrease operational costs. Only a hybrid approach gives HB the choice and flexibility it needs in where to run their workloads and applications.

The BizTalk Server is capable to directly connect to Azure Logic Apps and can leverage additional connectors. Vice versa, a Logic App can communicate with BizTalk as well as with several other OnPrem systems.

## FUTURE PROOF HYBRID CLOUD STRATEGY

Microsoft puts tremendous efforts in its cloud strategy. The Azure technologies are constantly evolving. Undoubtedly, companies are rapidly turning to the cloud and seizing the opportunities it provides: increased agility and faster innovation.

Thus, Azure integration services enhance the Microsoft Integration Platform. In Azure lightweight integration use cases can be plugged together by information workers within minutes while more complex workflows can be implemented reliably in BizTalk and connected seamlessly to Azure. Artefacts like mappings, schemas, rules etc. can be exposed and/or reused in Azure.

We will see the next release of BizTalk Server in 2019 (as announced by Microsoft). Furthermore, Microsoft releases subsets of Azure technologies for OnPrem usage such as Azure Stack. There are current plans to do the same with Logic App technology. Most likely, the hosting platform for it will be BizTalk.