



# archITekt

the low-code platform



# IT challenges

## **Growing need for custom projects**

### **Custom projects are challenging more than ever:**

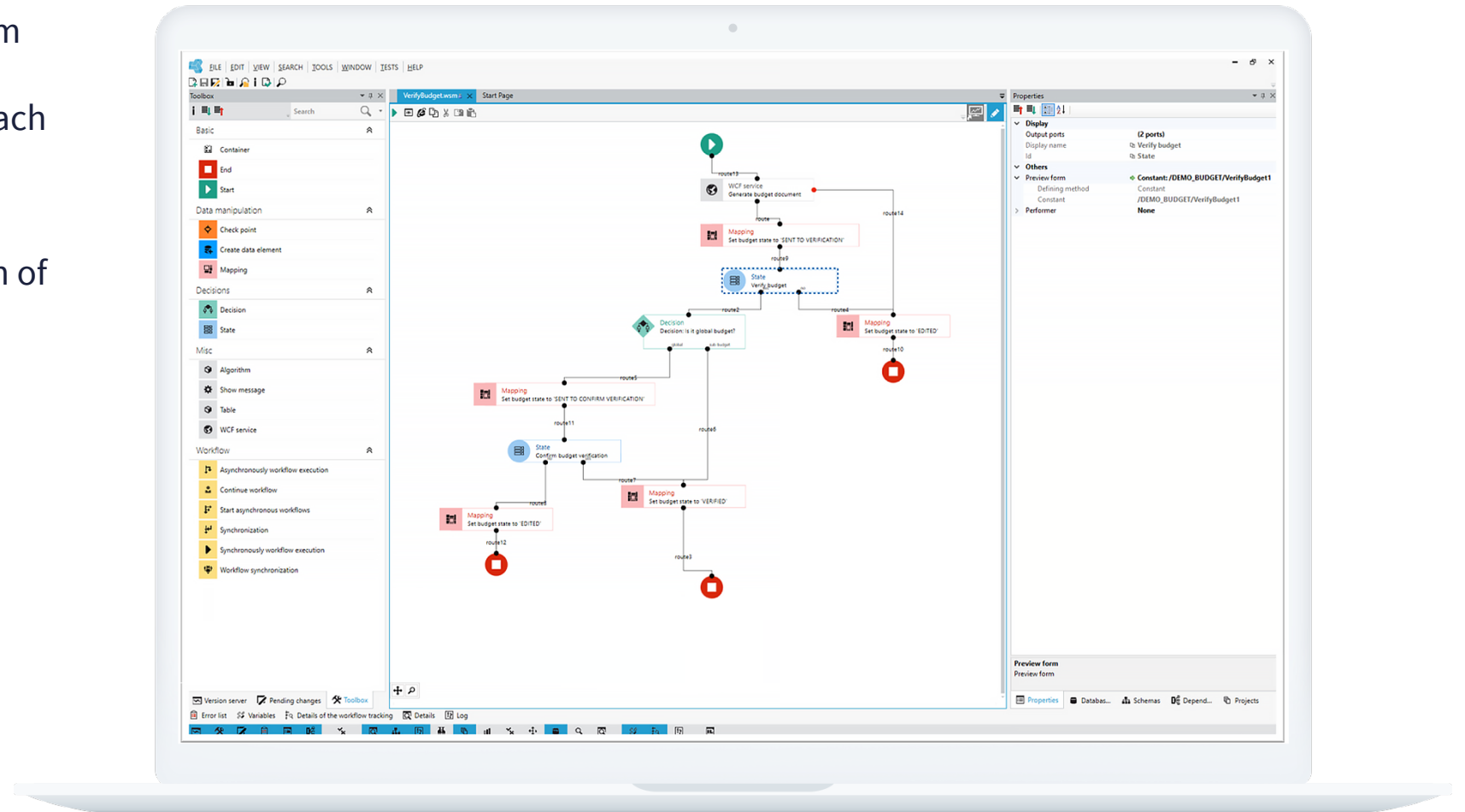
- ✓ Growing cost of coders
- ✓ Difficult recruitment of skilled people
- ✓ Long time of implementation

### **Products implementation means compromising:**

- ✓ Configuration possibilities are limited
- ✓ Adjustments are expensive or impossible
- ✓ It forces changes to internal processes

# archITekt low-code platform is the answer

- ✓ **archITekt** is a low-code platform allowing to build end-to-end applications using visual approach instead of hand-coding.
- ✓ Apps are built using drag&drop, connection and parametrization of ready-to-use components.



# archITekt platform benefits

## **Due to the way it works it allows to:**

- ✓ Shorten time of development\*
- ✓ Engage non-programmers in the process
- ✓ Build and manage apps in-house
- ✓ Limit costs

# What can archITekt be used for?

- ✓ **Creation of new, custom apps**  
Simple or complex - from Vacation/days off request management to scoring algorithms for credit systems
- ✓ **Support for existing applications**  
E.g., in the field of integration and data processing, use of algorithms, engine for building decision models or automation of documents generation.
- ✓ **Prototyping**  
Building prototypes to validate business concepts at a fraction of the costs.



# What can archITekt be used for?

There is number of possible use-cases. Some are listed below:

- ✓ Order processing system [from order acceptance to shipping and reporting]
- ✓ Data exchange between production, sales and the analysis / planning department
- ✓ Budgeting
- ✓ Price calculations for multi-component products, made "on demand"
- ✓ Configuration and handling of document generation [eg. contracts, annexes, letters, invoices, waybills, serial correspondence]
- ✓ Building custom modules for ERP systems
- ✓ CRM functionalities
- ✓ Calculations / commission settlements for the sales network
- ✓ Tax calculations
- ✓ Business trips settlement/management
- ✓ Vacation/days off request management
- ✓ Building scoring algorithms for credit systems
- ✓ Building connectors to external sources of information
- ✓ Building scoring algorithms

# Who can use archITekt?

Low-code limits the need for qualified developers' involvement by giving possibility to engage non-programmers

- ✓ **Non-programmers** (so called 'Citizen developers')  
Due to visual way of creating applications, business logic may be built and maintained with easy to set-up workflows & formulas (Excel alike)
- ✓ **Programmers**  
To speed-up their work and allow to focus on the essentials

# Possibilities grow with progress of the team

Different levels of apps complexity are possible

## **Simple apps**

- ✓ Start simple, with basic features

## **Complex systems**

- ✓ Develop gradually to a high level of complexity

## **Expand with add-ons**

- ✓ When meeting limits in some areas, archITekt is open to extensions (via dll plugins, inline code: C#, SQL, JavaScript)



# Flexible business model

- ✓ **Test/development license - Free**
- ✓ Commercial license - subscription fee, based on the number of users accessing the apps created with archITekt platform

## **Applications may be developed by:**

- ✓ Internal team
- ✓ Partner
- ✓ VSoft

## **And maintained by:**

- ✓ Internal team
- ✓ Partner

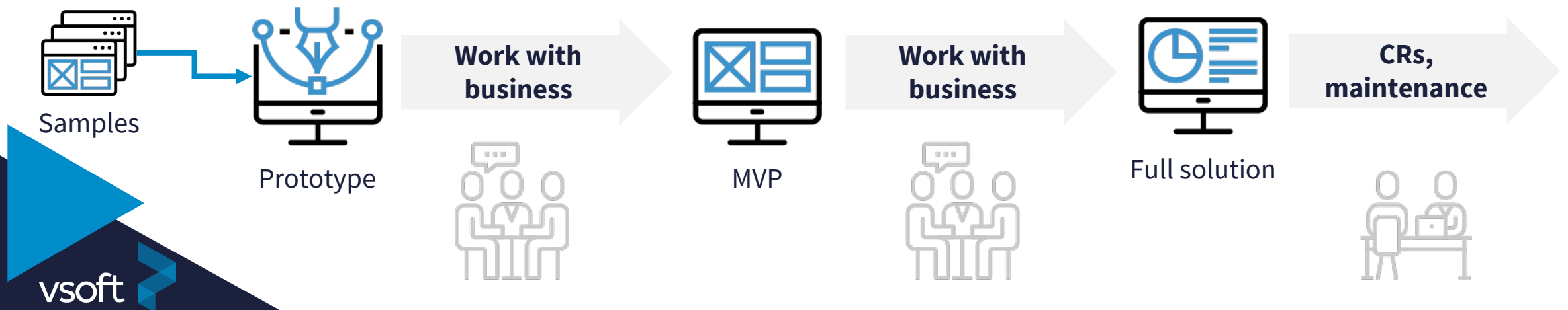
# Flexible application development & maintenance

Work with business in short iterations until MVP is achieved:

- ✓ adding new requirements to the prototype
- ✓ presenting results right away.

Business starts to use MVP on production. At the same time the development is going forward considering continuous feedback from the production.

After deployment of the full solution, developer still maintains it and implements changes requested by business.



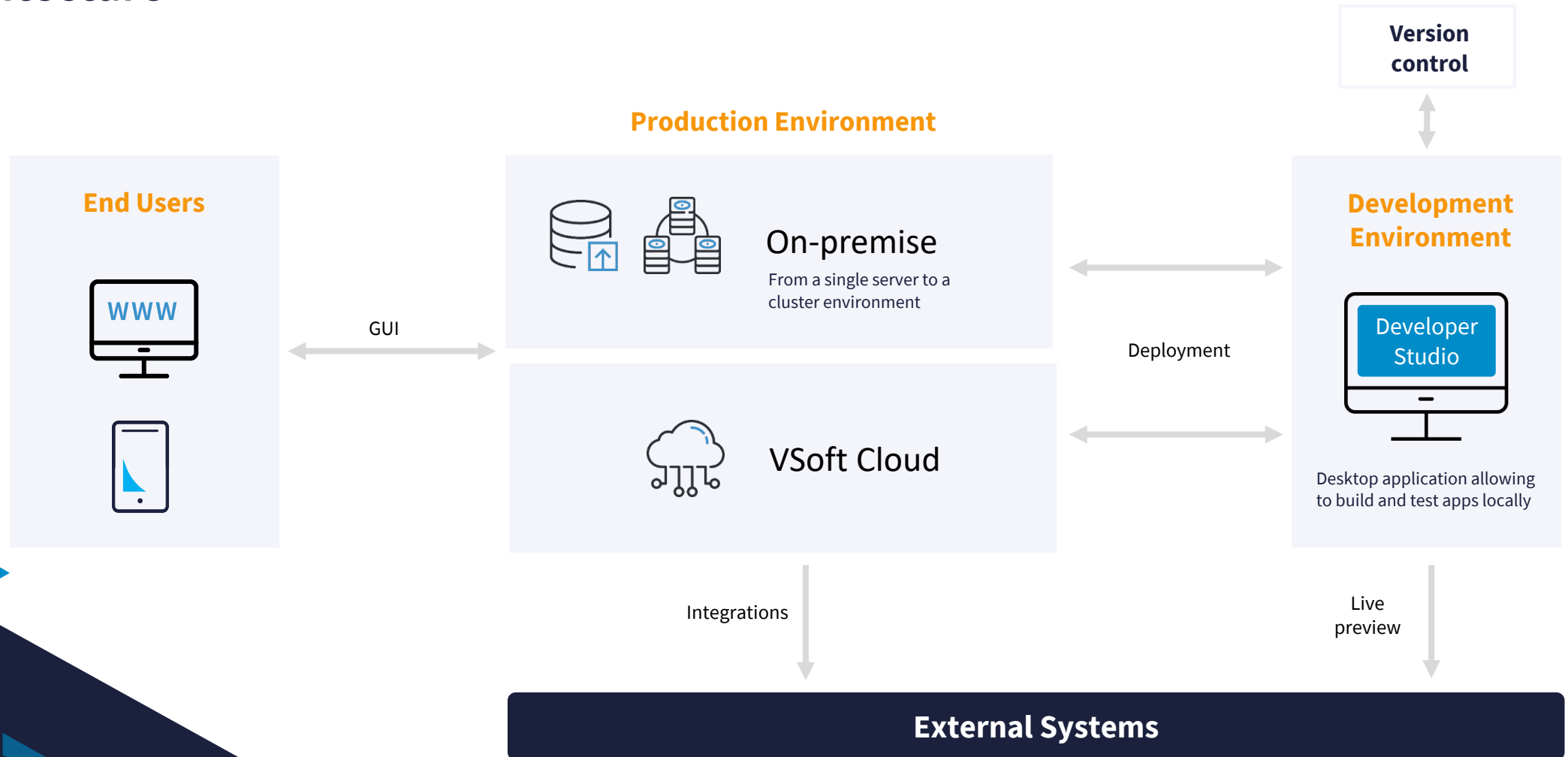
# Platform features

There is number of functional modules supporting apps creation

- ✓ Data Structures
- ✓ User Interface
- ✓ Algorithms
- ✓ Workflows
- ✓ Integrations & mass data processing
- ✓ Scheduling
- ✓ Documents Generation
- ✓ Dictionaries
- ✓ Users & Permissions
- ✓ Versioning

# Technical background

## Architecture



# Technical background

## Technology

The platform is based on:



Integrations with webservice: SOAP / REST / POX

Integrations with databases:



# References

**archITekt** is being used within solutions provided for the biggest Polish banks, credit unions and leasing companies.



# Feel invited to get in touch

 +48 602-134-090

 [global.markets@vsoft.pl](mailto:global.markets@vsoft.pl)

 <https://www.vsoft-architekt.com>

