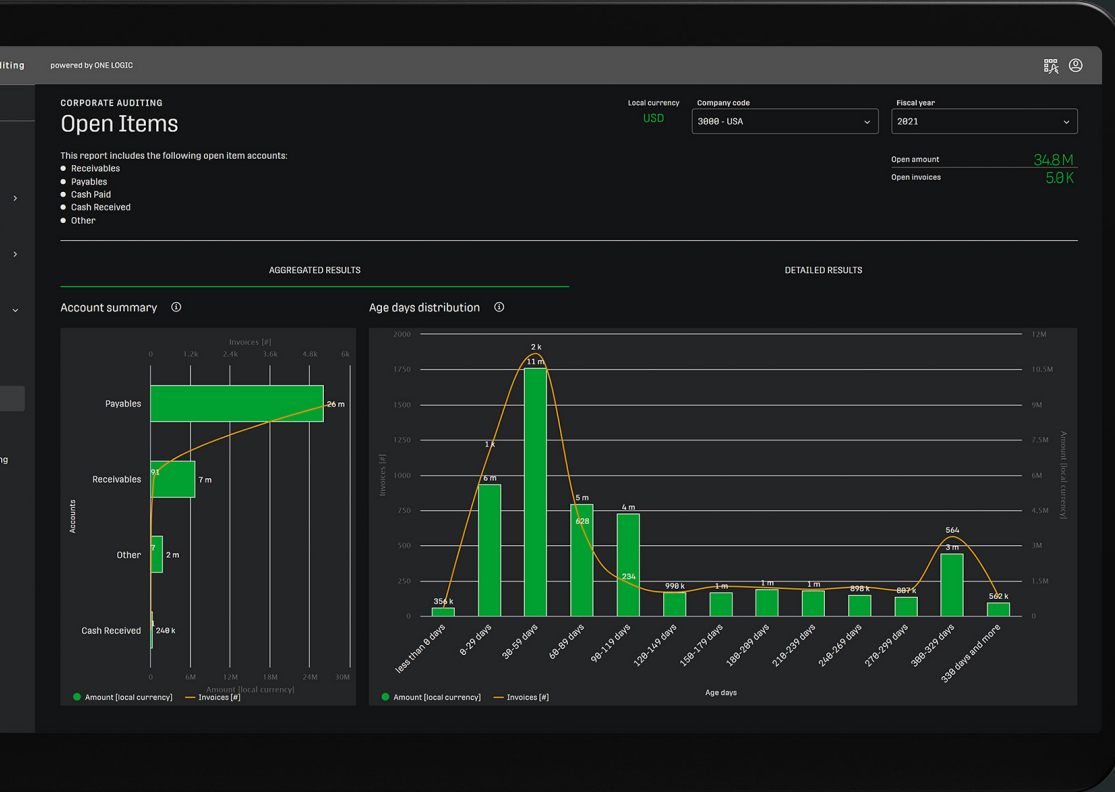


ONE DATA Audit



Future-Oriented Audits: Agile, Centralized, Automated and AI driven



Microsoft
Partner

Future-Oriented Audits: Agile, Centralized, Automated, and AI-driven



ONE DATA Audit

The increasing complexity of business processes and ever-growing volumes of data pose new challenges for internal auditors. Hidden risks cannot be identified efficiently before they become a problem. With automation and AI, **ONE DATA Audit** enables you to establish an agile auditing process.

ONE DATA Audit works with structured and unstructured data and is compatible with SAP ERP systems. This allows extremely fast deployments, on-premises or in **Microsoft Azure**.

With state-of-the-art technology the three program modules 'Corporate Auditing', 'Outlier Detection' and 'Anomaly Tracking' work seamlessly together. The first two identify potential errors and store them in a 'work stack'. The results can then be tracked in the tracking module, where identified risks, tracking labels, and comments are continuously updated among all collaborators.

Fast, flexible cloud deployment

ONE LOGIC provides flexible software options to integrate our solution into your IT infrastructure.

- Infrastructure as code with **Terraform**
- Container-based cluster architecture via **Kubernetes**

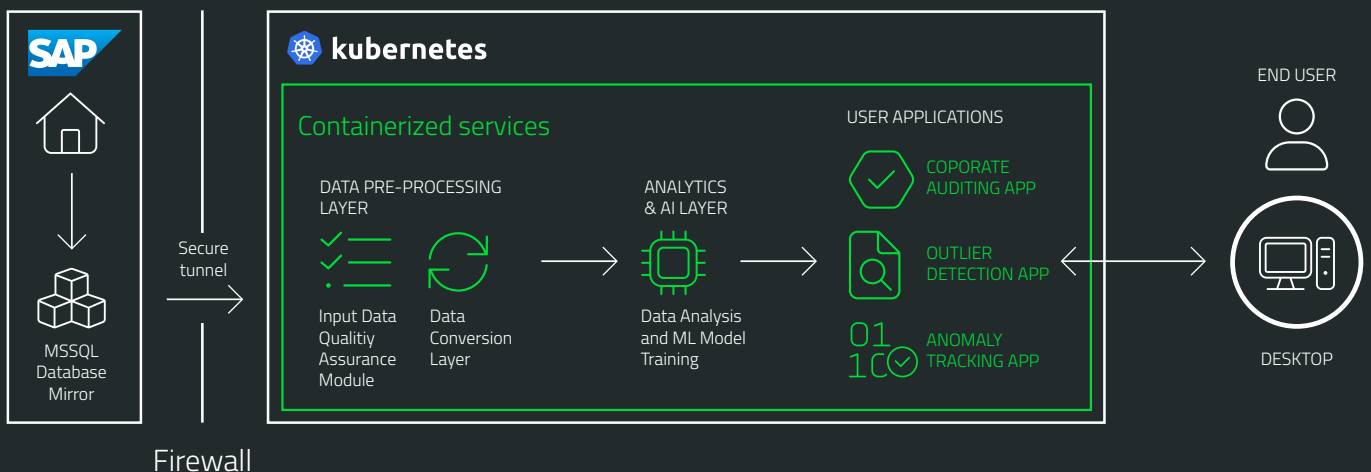
Depending on your existing situation, cloud-based provision can ideally take place within a few days. We're delighted to answer your specific questions about implementation.



The Application architecture overview of **ONE DATA Audit**

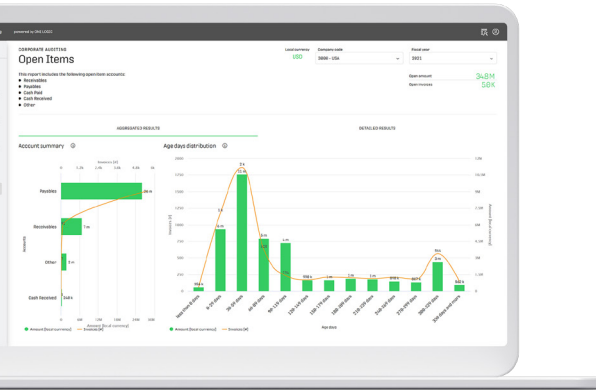
Corporate
Datacenter

ONE DATA Audit host system:
on-premises / in Azure Cloud



Enable Agile Auditing

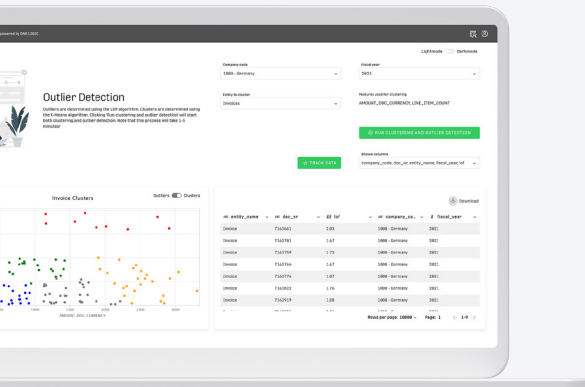
and uplift efficiency: ONE DATA Audit consists of three key functionalities



Corporate Auditing

Analyze and break down

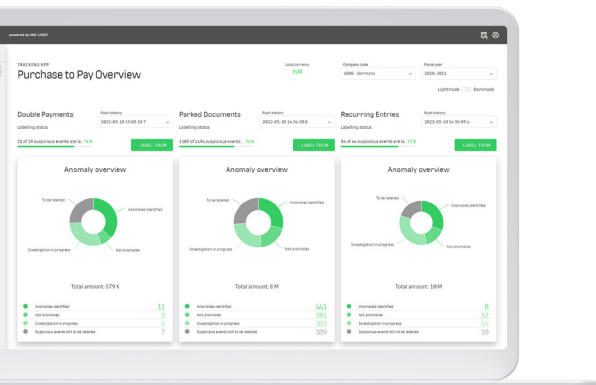
Corporate Auditing automatically identifies different types of suspicious events in your purchase-to-pay and order-to-cash processes. It covers over 30 reports. You can see the aggregated dashboard and detailed drill-down tables at document line level to conduct an interactive analysis.



Outlier Detection

Expand your scope

With Outlier Detection you can find unknown errors. Machine learning algorithms use AI to go beyond rule-based anomaly detection and identify suspicious elements in invoices, purchase orders, or supplier data



Anomaly Tracking

Follow your findings

Forwards identified risks directly to the tracking application for centralized investigation and follow-up

Comments and labels are available for all collaborators / auditors

Why Microsoft Azure?



BE FUTURE-READY

Continuous innovation from Microsoft supports your development today, and your product visions for tomorrow. With 1,000+ new capabilities in the past year, you can build on the latest advancements in AI, blockchain, Kubernetes, containers, and databases to keep you ahead of the curve. Our enterprise grade analytics solution outperforms the competition, costs less, and is fully compatible with your existing development, BI, and data-science tools.

OPERATE HYBRID SEAMLESSLY

On-premises, in the cloud, and at the edge—we'll meet you where you are. Integrate and manage your environments with tools and services designed for hybrid cloud. Enhance security, simplify access, and set smart policies across your different environments with a single-identity platform trusted by 90% of enterprises globally.

BUILD ON YOUR TERMS

You have choices. With a commitment to open source and support for all languages and frameworks, build and deploy how you want to. Take advantage of the full-featured, integrated development environments with built-in support Visual Studio and Visual Studio Code, the most popular IDEs trusted by 15M+ developers. We embrace open source, drive innovation through collaboration, and contribute back to the community.

TRUST YOUR CLOUD

Get security from the ground up, backed by a team of experts, and proactive compliance trusted by enterprises, governments, and startups. With a \$1B+ investment in security R&D and 3,500 cybersecurity experts, security is foundational for Azure.

ONE LOGIC Transforms Data into Sustainable Business Value with Turnkey AI Data Products

Are you interested in our data products? Please contact us. We will advise you about the requirements and the individual potential for your company.

Contact us: alliances@onelogic.de

or

Request a Demo on our [Website](#)

Contact

Passau: Kapuzinerstraße 2c, D-94032 Passau

Munich: Prinzregentenstraße 50, D-80538 Munich

Frankfurt/Main: Eschenheimer Anlage 1, D-60316 Frankfurt/Main

Zurich: Europaallee 41, CH-8004 Zurich

Web: www.onelogic.ai

LinkedIn: [linkedin.com/company/one-logic-gmbh](https://www.linkedin.com/company/one-logic-gmbh)

Management:

Dr. Andreas Böhm, Dr. Stefan Roskos, Christian Aumüller,

Prof. Dr. Andreas Pfeifer (ppa.)

www.onelogic.ai



ONE LOGIC

**Microsoft
Partner**