

Co-sell Xylos Secure Modern Workplace Endpoint Management Workshop

Xylos



Tony Verhaegen & Paul Peersman



In a **digital, always-on** and **always-connected** world, every company risks **financial** and / or **reputational damage** due to **cyber security** threats.

X

NEWS PAGE

Production to re-start on Monday at West Flemish company paralysed by ransom software

The leper (West Flanders) weaving-machine manufacturer Picanol has announced a "cautious" return to production from Monday morning. The company's production lines have been idle all week after its IT system was paralysed by ransom software hackers. In a press statement released on Friday, Picanol announced that from Monday some production will resume.

Asco, a Zaventem-based manufacturer of aircraft parts, has confirmed news that it has shut down operations following a cyber-attack on the company's servers.

According to Data News, Asco has shut down its base in Zaventem, as well as operations in other countries, following a breach of security. About 1,000 people are currently on technical unemployment until the company resumes operations. Technical unemployment allows workers to claim temporary unemployment benefits when they are put out of work for a limited period, by circumstances beyond their control. Union representatives Jan Baetens told *De Standaard*, "when the technical problems are sorted out, we want to look together with management to see if they can't pay out a supplement to compensate the workers for their loss of earnings"

Maersk had to reinstall 45,000 new computers after hacker attack

Maersk was forced to reinstall 4,000 servers and 45,000 computers after a cyber attack impacted the group for several days last summer, says Chairman Jim Hagemann Snab. See a video with Snabe from Davos here.



More than 4,000 reports of cyberattacks against Belgian citizens and companies were made this year, a new high which nearly tripled 2018 figures.

Interim Prime Minister Sophie Wilmès said in parliament that Belgium's Centre for Cyber Security (CCB), which she oversees, received 4,484 reports of cyber incidents or attacks this year, up from 1,600 in 2018, De Tijd reports.

What is **Security** for a Business/IT organization?



Information technology security and management can be defined as processes and governance that support organizations by enabling organizational structure and technology. The goal is to protect the organization's IT operations and assets against internal and external threats, intentional or otherwise.



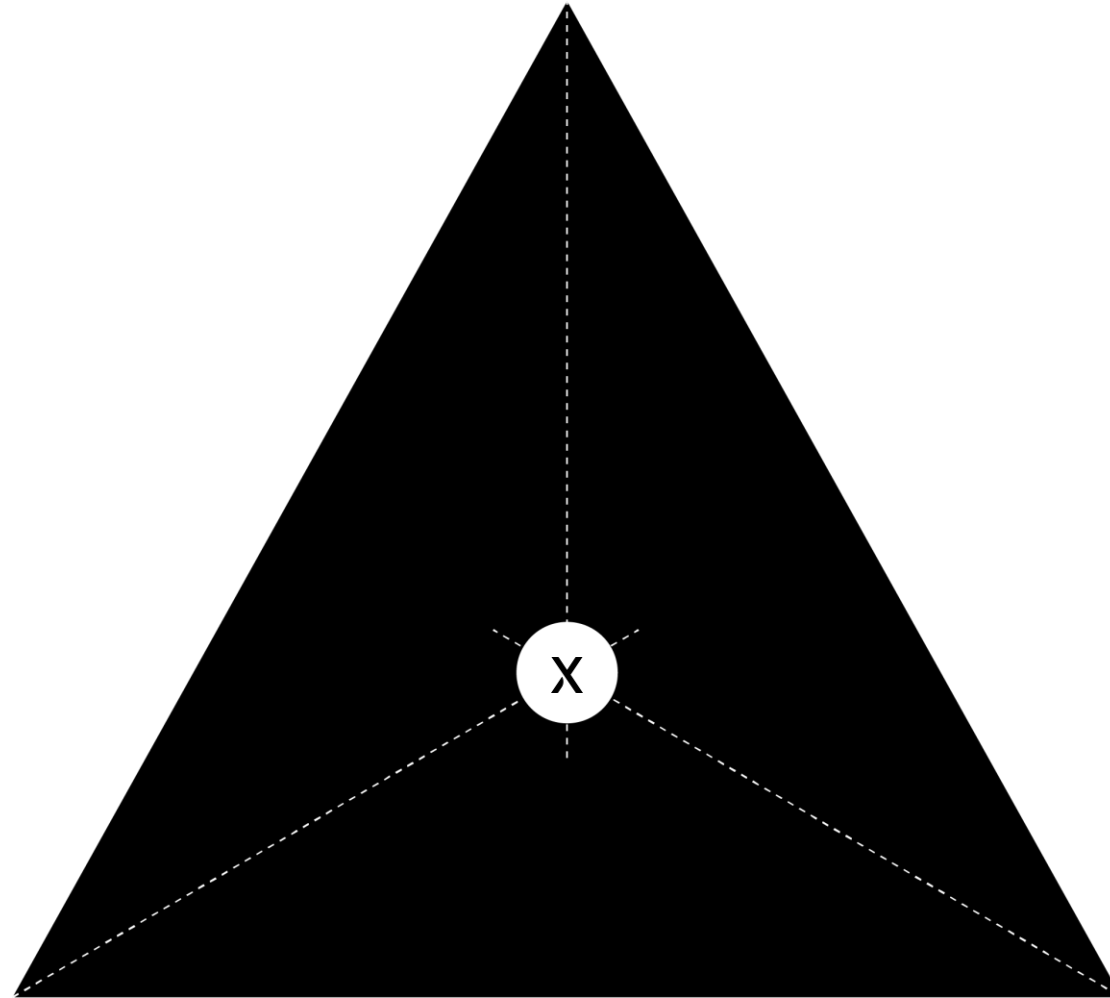
The purpose of IT security management is to ensure confidentiality, integrity, and availability of IT systems. Fundamentally, security management is a part of the risk management process and business continuity strategy in an organization.

Security at Xylos



*We believe successful solutions require a human perspective,
a strategic approach, a solid understanding of data and technology as well as a
strong execution.*

Business
strategy



Technical
implementation
'geeky'

Human
adoption
'soft'

X

Xylos is an expert in **secure digital workplaces**

SECURED BY XYLOS



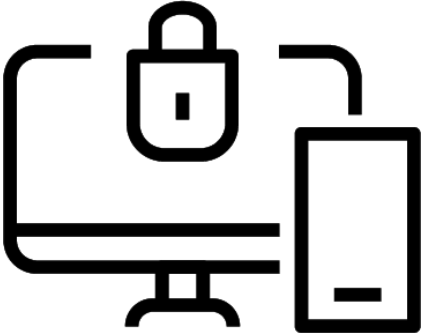
Physical user



Digital user



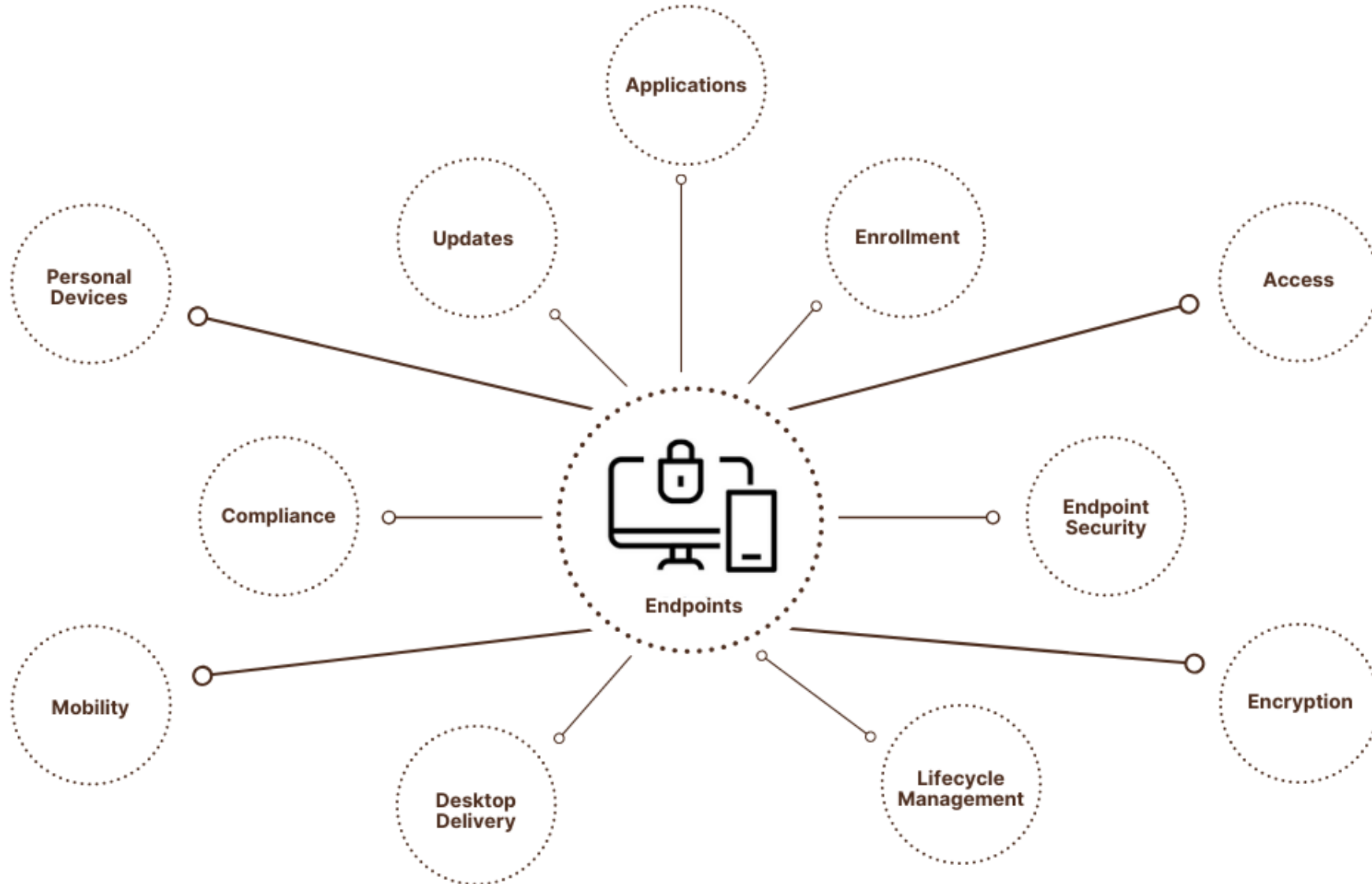
Information & Data



Endpoints & Applications Delivery

Threat protection

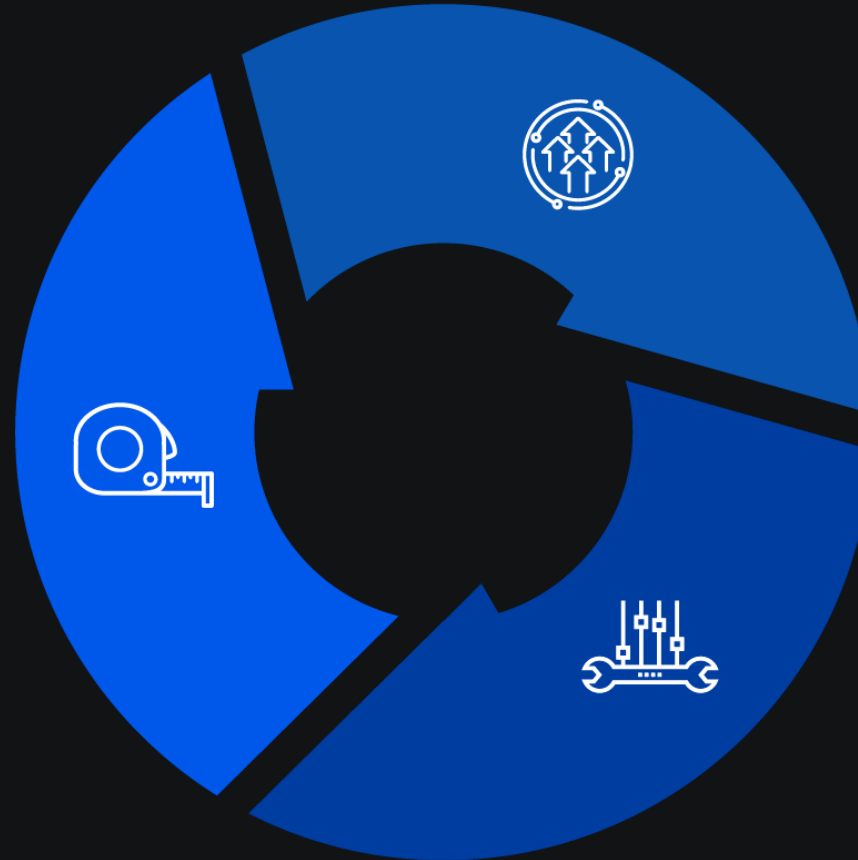
Xylos is an expert in **Endpoint Management**



The Xylos security approach

ASSESS

- Baseline measuring
- Establish endpoint overview
- Define building blocks
- Create roadmap



IMPROVE

- Implement technology, procedures, policies
- Improve resilience, lower risk

MANAGE

- Follow up compliance
- Maintain resilience level, both for technology and people

Assess

X



Interviews & workshops

Questionnaires



Device Management Objectives and Requirements

Please provide information about the device management objectives and requirements.

Question	Answer	Comment
What are the top device management challenges you are facing?	<input type="checkbox"/> Challenge to prevent security threats from entering the enterprise environment caused by mobile access to corporate applications and data. <input type="checkbox"/> No remote access to on premise LOB applications from mobile devices. <input type="checkbox"/> Challenge to comply with data privacy and information protection regulations (like HIPAA and GDPR). <input type="checkbox"/> No tools to manage lost or stolen devices and to prevent corporate data leakage. <input type="checkbox"/> Mobile Device types and operating systems fragmentation makes it difficult for IT to provide a consistent user experience and to secure corporate applications and data across all these platforms. <input type="checkbox"/> Other, please specify	

Does your organization provide company phones and/or tablets to employees?	<input type="checkbox"/> Yes, please specify <input type="checkbox"/> No	
Are employees allowed to access corporate email, data, or applications from personal phones or tablets?	<input type="checkbox"/> Yes <input type="checkbox"/> No	
Do employees have remote access to corporate applications and data from their company Windows laptop?	<input type="checkbox"/> Yes <input type="checkbox"/> No	
Do employees have remote access to corporate applications and data from	<input type="checkbox"/> Yes <input type="checkbox"/> No	

Device Management

Please provide information about your device management environment:

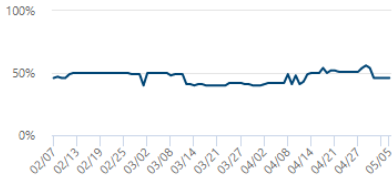
Question	Answer	Comment
What, if any, Mobile Device Management (MDM) solutions have you currently deployed?	<list MDM products>	
Are Windows 10 devices currently managed with Microsoft Endpoint Configuration Manager?	<input type="checkbox"/> Yes Version: <version?> <input type="checkbox"/> No	
Can your IT team manage all work devices from a single console?	<input type="checkbox"/> Yes <input type="checkbox"/> No	
Do your current solutions let you control settings on personal devices used by employees for work (BYOD)?	<input type="checkbox"/> Yes <input type="checkbox"/> No	
Can your IT team automatically deploy company-required apps and updates to personal devices used for work and managed by IT?	<input type="checkbox"/> Yes <input type="checkbox"/> No	
Do employees have access to optional, company-approved apps they can download to the devices they use for work?	<input type="checkbox"/> Yes <input type="checkbox"/> No	
Can your IT team control employee access to company data?	<input type="checkbox"/> Yes <input type="checkbox"/> No	
Can IT protect company data in managed apps (including Office Mobile apps) used on personal devices, including employee's devices that are not managed by IT?	<input type="checkbox"/> Yes <input type="checkbox"/> No	
Can you provide self-service functions to employees for managing aspects of their access and mobile devices, such as password reset or device enrollment?	<input type="checkbox"/> Yes <input type="checkbox"/> No	

Technical assessments

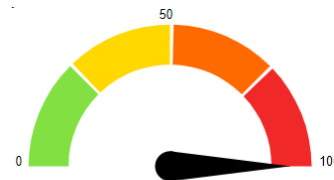
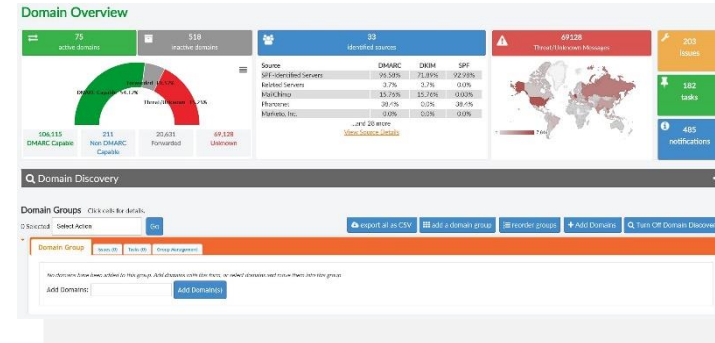
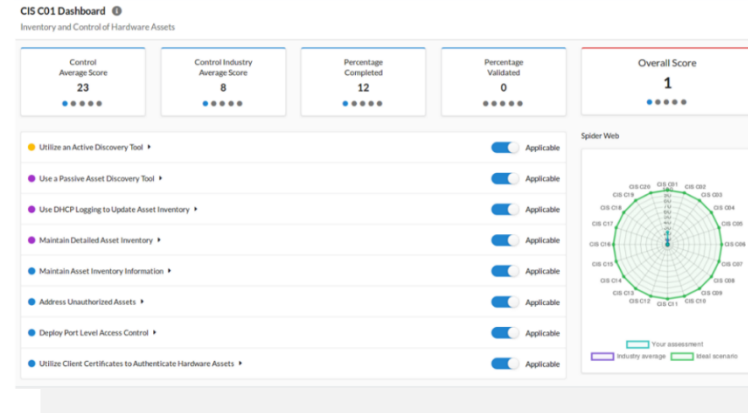
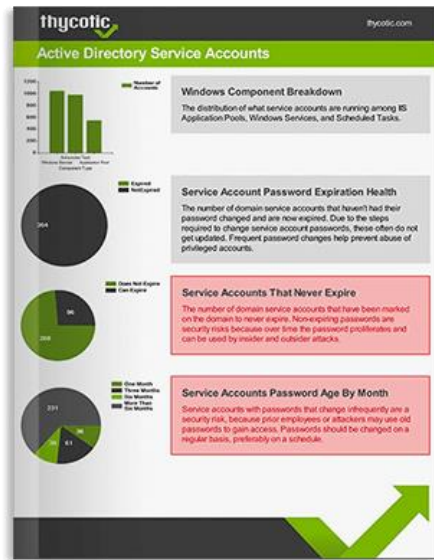
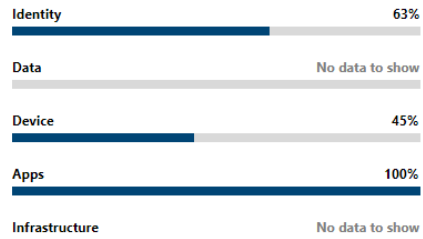


Secure Score: 46%

379/820 points achieved

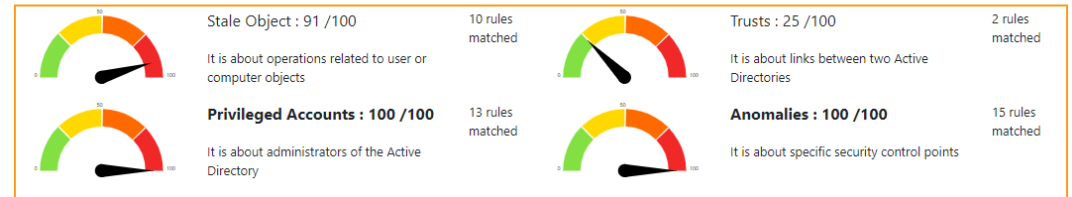


Breakdown points by: Category



Domain Risk Level: 100 / 100

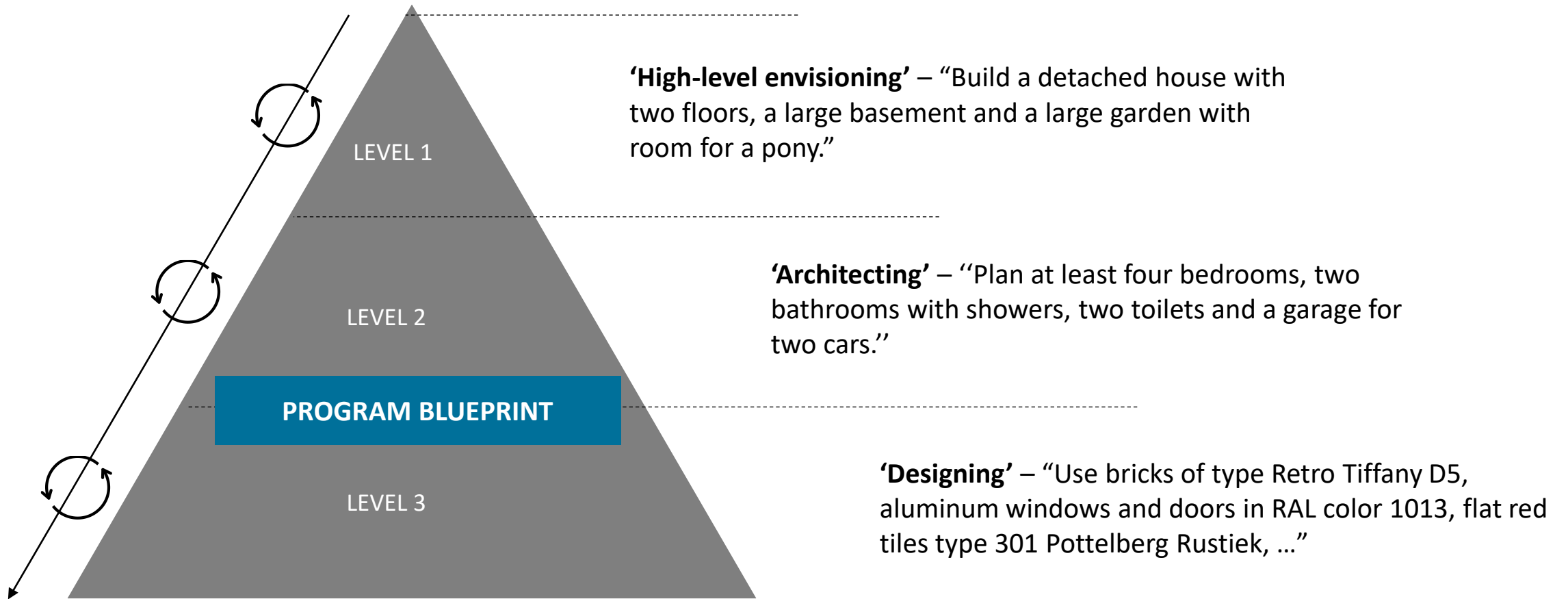
It is the maximum score of the 4 indicators and one score cannot be higher than 100. The lower the better



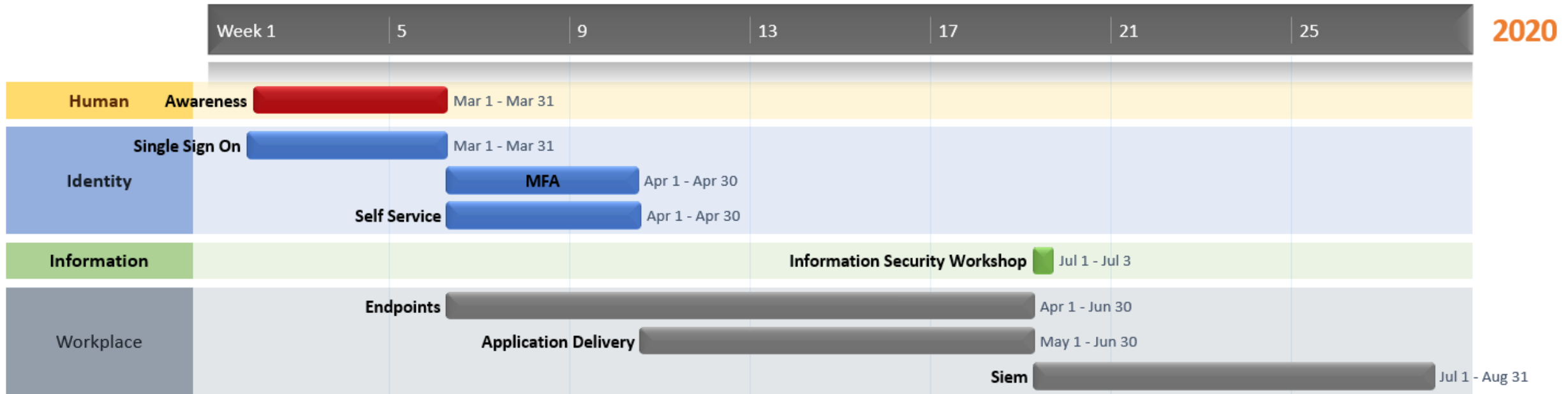
Endpoint overview



Architecture Approach: ACE



Create Roadmap



Improve

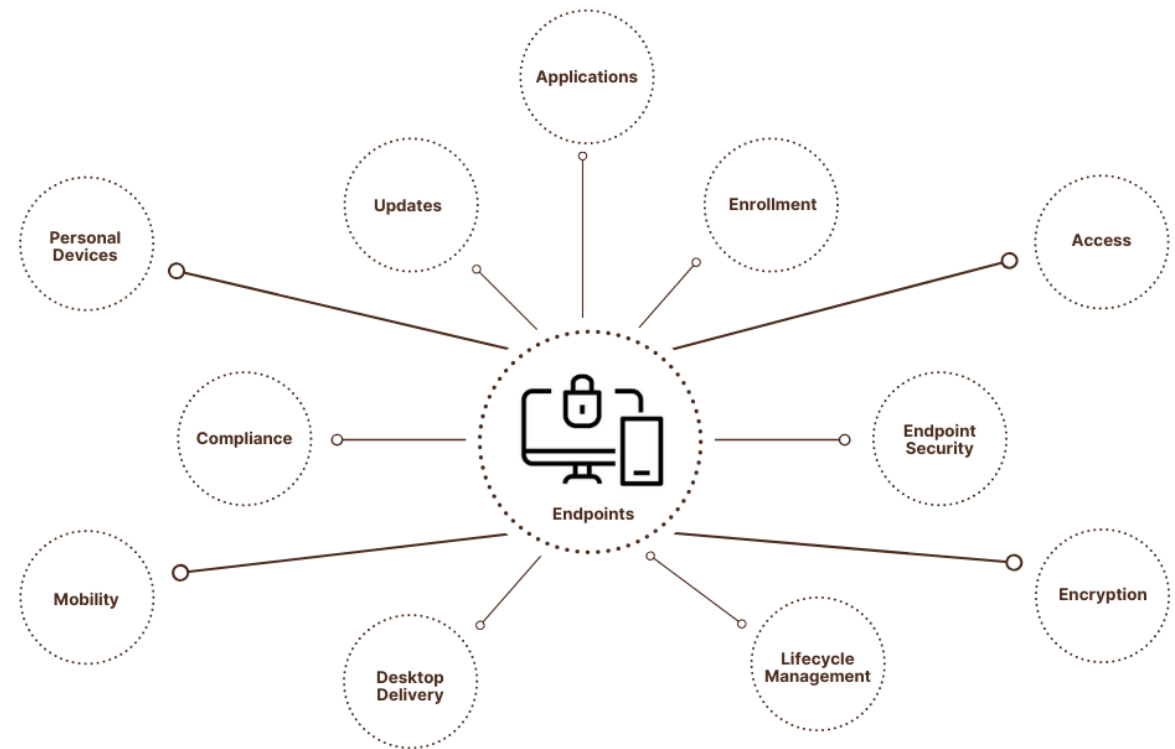
x



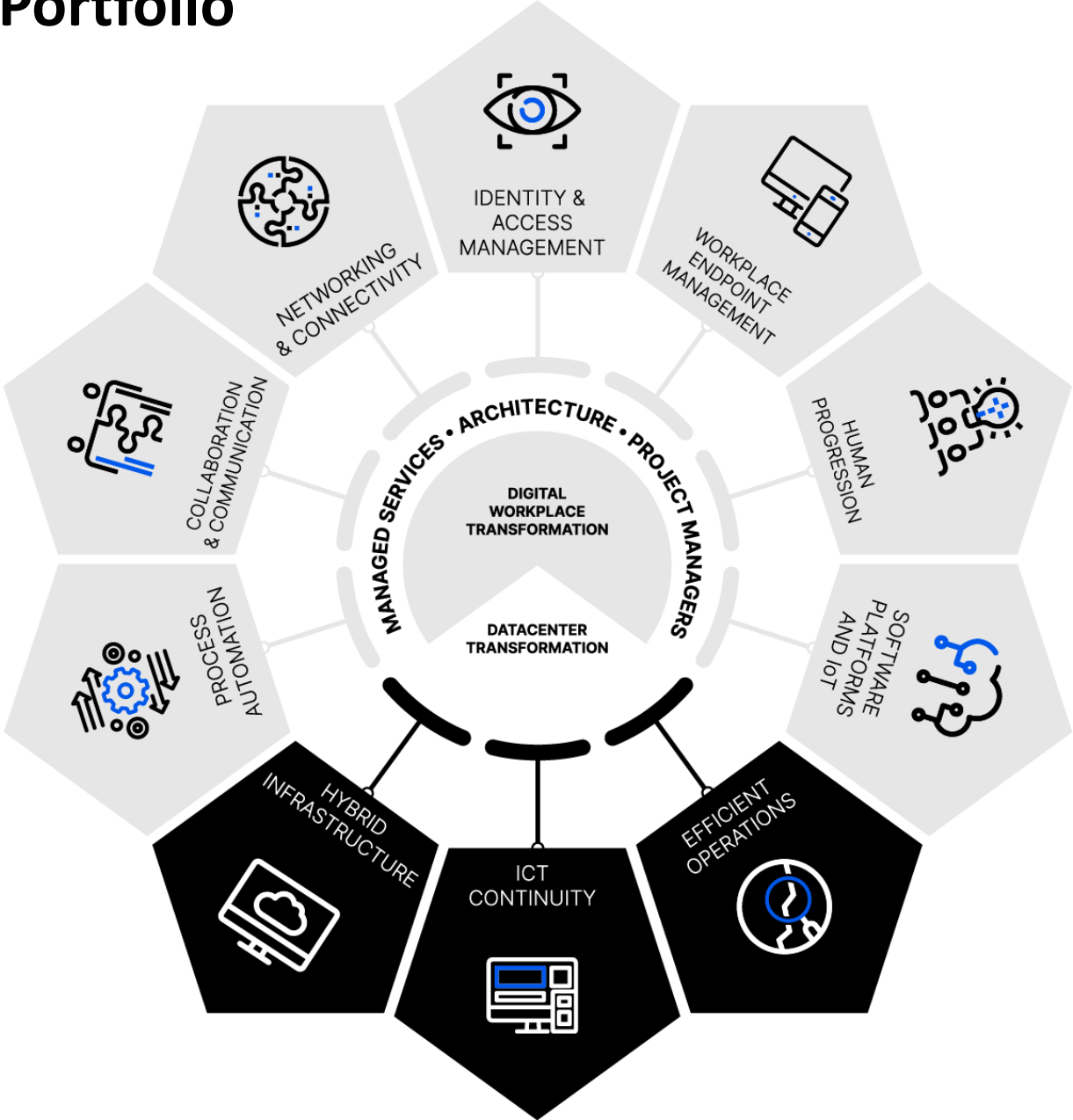
Endpoint Management

Based on 4 major cornerstones:

- Granting secure access towards all services in a modern workplace
- Manage and govern your identities providing self service
- Manage and govern your privileged identities
- Securing your authentication



Xylos Workplace Portfolio

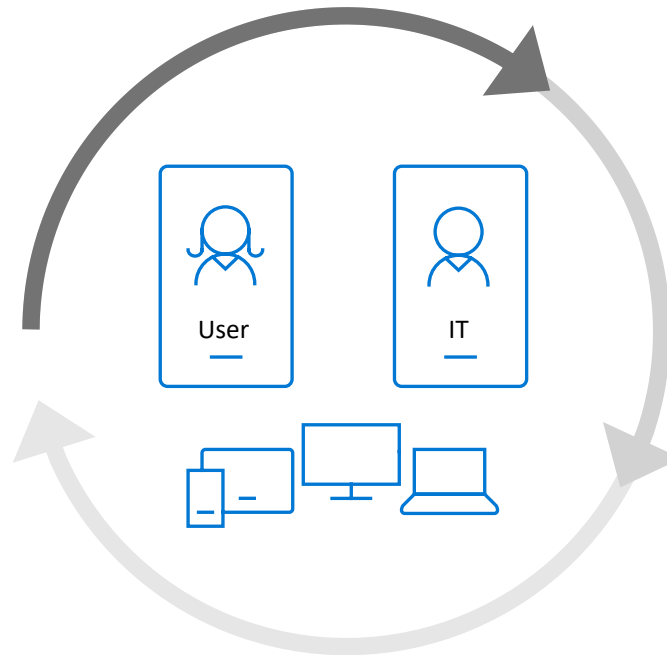


Enroll

- ✓ Provide specific enrollment methods for iOS/iPadOS, Android, Windows, and macOS
- ✓ Provide a self-service Company Portal for users to enroll BYOD devices
- ✓ Deliver custom terms and conditions at enrollment
- ✓ Zero-touch provisioning with automated enrollment options for corporate devices

Support & Retire

- ✓ Revoke access to corporate resources
- ✓ Perform selective wipe
- ✓ Audit lost and stolen devices
- ✓ Retire device
- ✓ Provide Remote Assistance



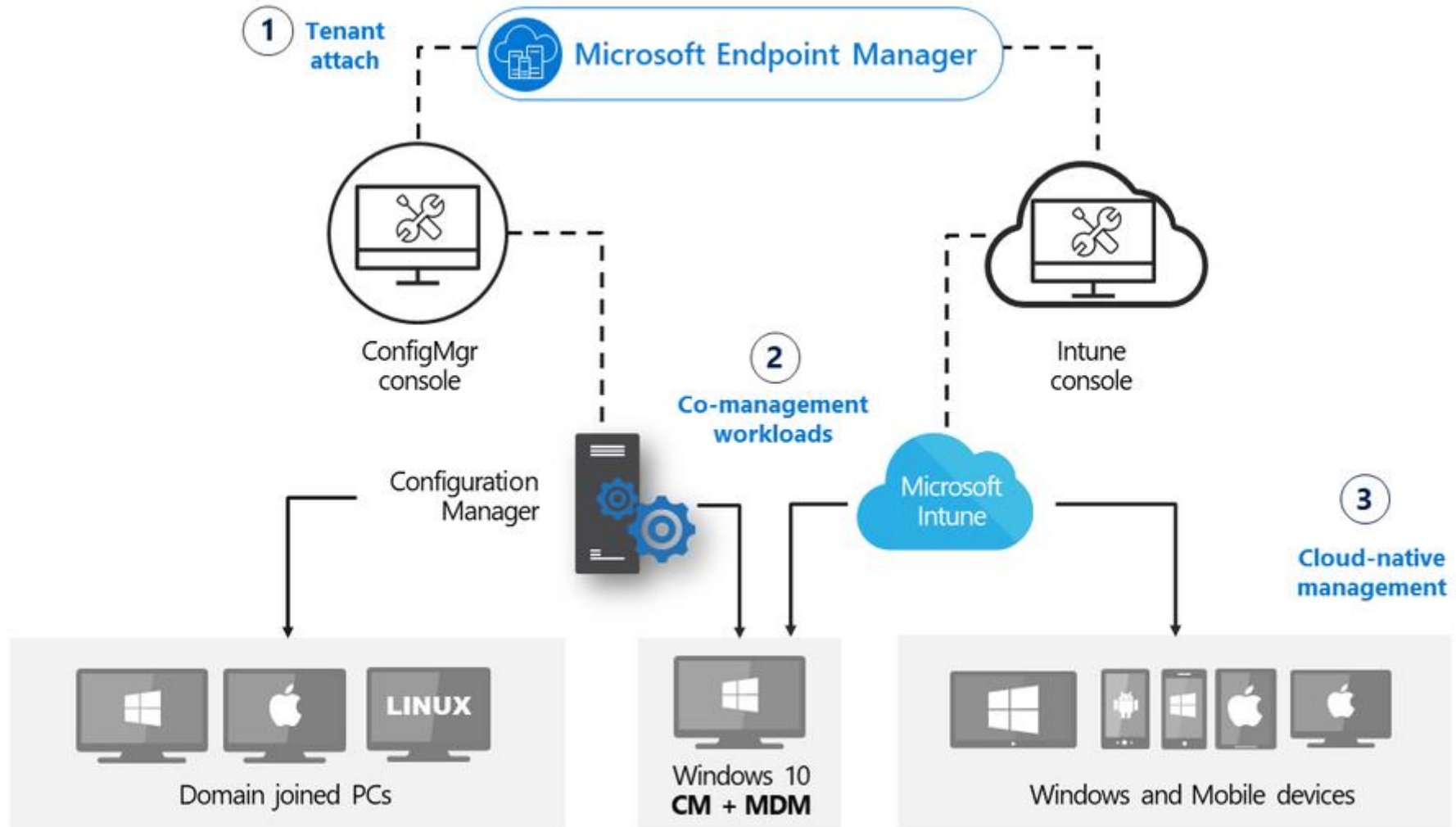
Configure

- ✓ Deploy certificates, email, VPN, and Wi-Fi profiles
- ✓ Deploy device security policy settings
- ✓ Install mandatory apps
- ✓ Deploy device restriction policies
- ✓ Deploy device feature settings



Protect

- ✓ Restrict access to corporate resources if policies are violated (e.g., jailbroken device)
- ✓ Protect corporate data by restricting actions such as copy/cut/paste/save outside of managed app ecosystem
- ✓ Report on device and app compliance

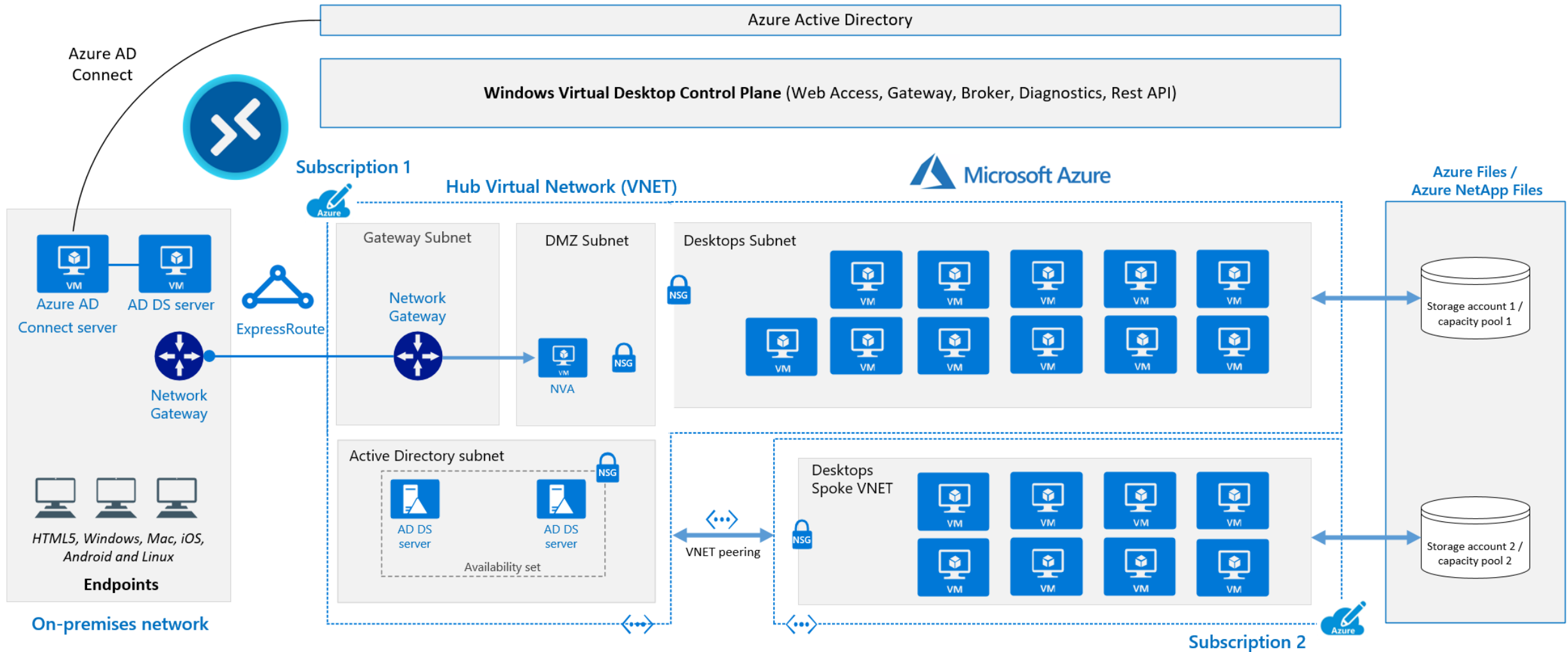
Microsoft Endpoint Manager



Management Powered by Microsoft 365 Cloud

	 On-premises	 Cloud attached
Traditional OS Deployment	✓	✓
Win32 app management	✓	✓
Configuration and GPO	✓	✓
BitLocker Management	✓	✓
Hardware and software inventory	✓	✓
Update management	✓	✓
Unified Endpoint Management – Windows, iOS, macOS, Android		✓
Modern access control – Compliance, Conditional Access		✓
Modern provisioning – Autopilot, DEP, Zero Touch, KME		✓
Modern security – Hello, Attestation, ATP, Secure Score		✓
Modern policy – Security Baselines, Admin Templates, Guided Deployments		✓
Modern app management – M365 Enterprise apps, Stores, SaaS, VPP		✓
Full M365 integration – Analytics, Graph, Console, RBAC, Audit		✓

Windows Virtual Desktop





Human progression

We bring people & technology together to enable your vision

6 progression tracks



Prepare for progression

#NotForME



Training

#PleaseTeachMe



Digital coach

#NextLevelPlease



Online 24/7

#HelpMeNowPlease



Gamification

#Fun&Learn



Inspiration

#InspireMe



End user adoption service

#PickMix

Manage

X





We focus on running your IT operations smoothly
and maintain the **resilience level**

Technical Support Services



Essentials

Service Desk Access

Incident handling
(All incidents included)

Patch management



Standard

Technical monitoring

Backup Management

Compliance monitoring



Premium

Incident Priority Upgrade

Functional / Technical Advisory

Xylos Technical
Account Management

Essentials: Business hours, Standard and Premium: 24/7

Service Delivery Management

Service reporting

Service Management

Governance

Support Package

Standard changes

Non-standard changes

Functional support

Information request



Xylos

Inspired by technology,
atypical by nature.