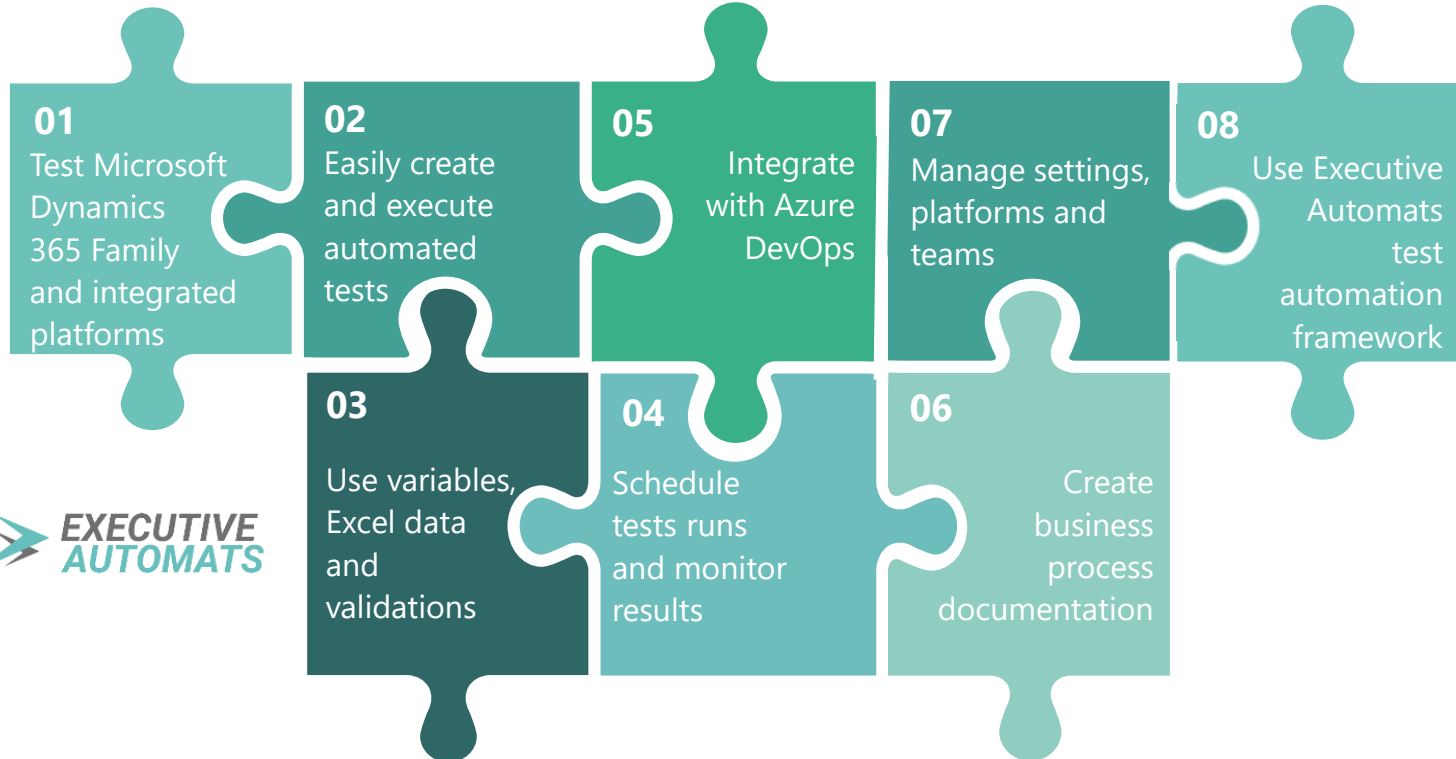


**EXECUTIVE  
AUTOMATS**

MAIN FEATURES

J U N E 2 0 1 9

# EVERYTHING YOU NEED TO CREATE COMPLETE AUTOMATED TEST SUITES IN MS DYNAMICS 365



# 1. TEST MICROSOFT DYNAMICS 365 FAMILY PRODUCTS

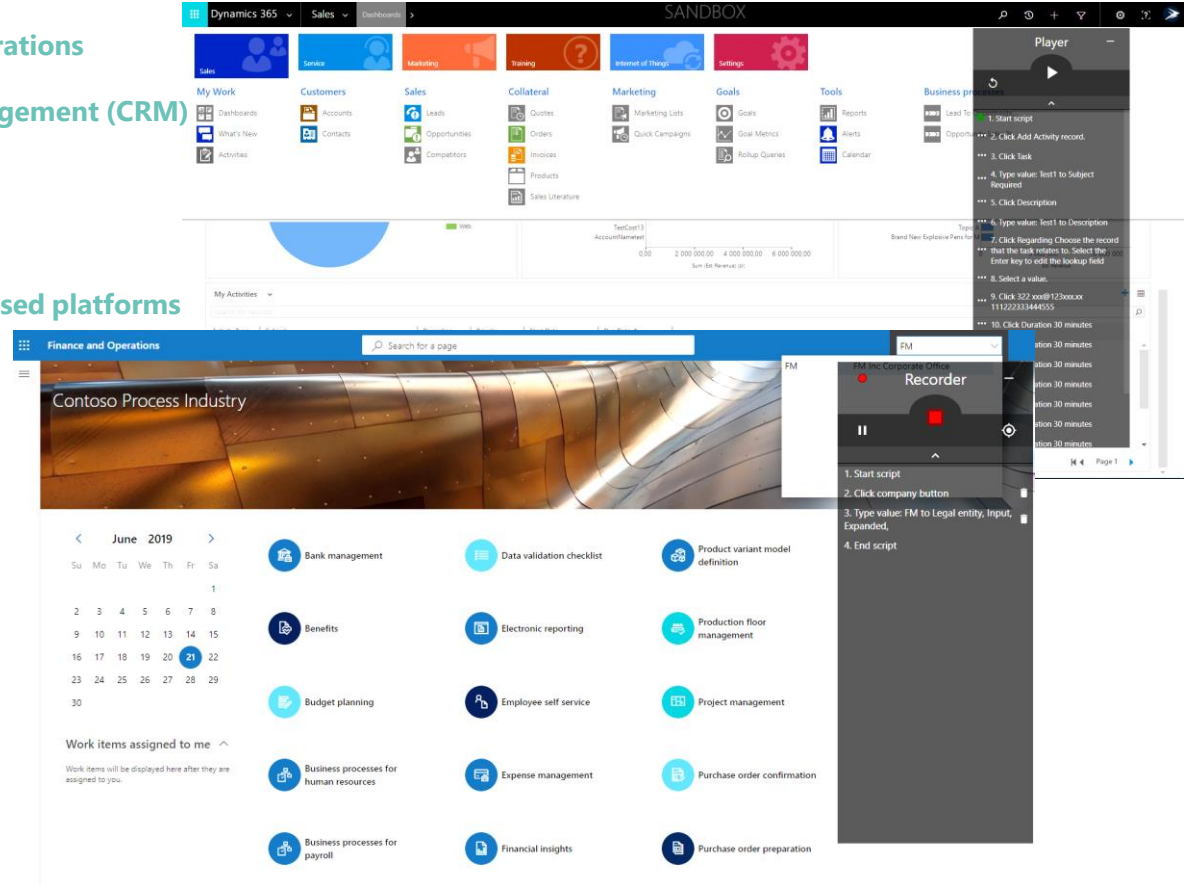
Microsoft Dynamics 365 Finance & Operations

Microsoft Dynamics 365 Customer Engagement (CRM)

Microsoft Dynamics 365 Retail + CPOS

Microsoft Dynamics Business Central

Possible integrations with other web-based platforms



The screenshot displays the Microsoft Dynamics 365 interface. The top navigation bar includes 'Dynamics 365', 'Sales', and 'Dashboard'. The main area shows a 'Sandbox' environment with various modules like Sales, Marketing, Training, and Settings. A 'Player' overlay on the right shows a test script with steps like '1. Start script', '2. Click Add Activity record', '3. Click Task', '4. Type value: test to Subject Required', '5. Click Description', '6. Type value: test to Description', '7. Click Regarding Choose the record that the task relates to. Select the Enter key to edit the lookup field', '8. Select a value.', '9. Click 322 xxx@123xxx.xx 11122233444555', and '10. Click Duration: 30 minutes'. Below the main interface, a 'Recorder' overlay shows a list of actions: '1. Start script', '2. Click company button', '3. Type value: FM to Legal entity, Input, Expanded', and '4. End script'.

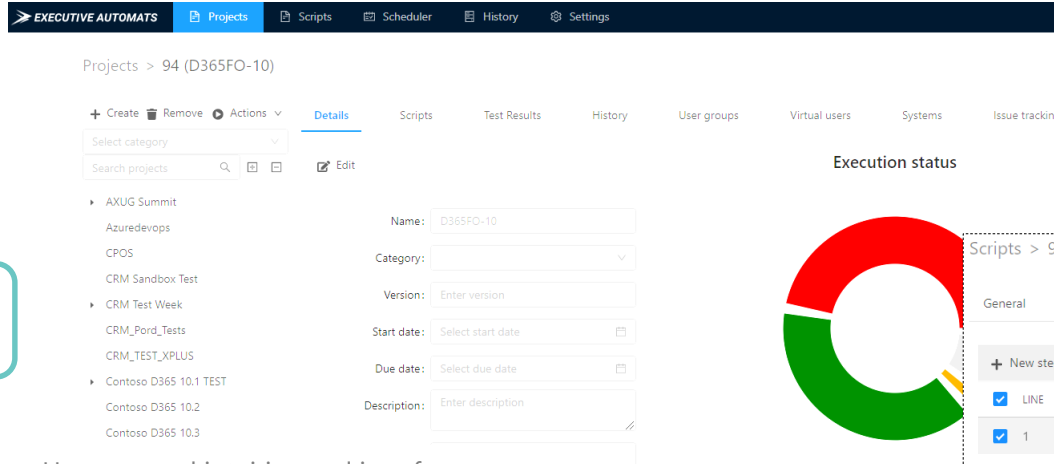
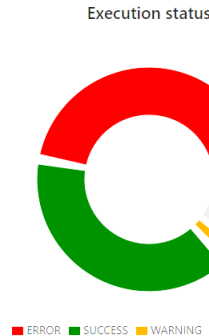
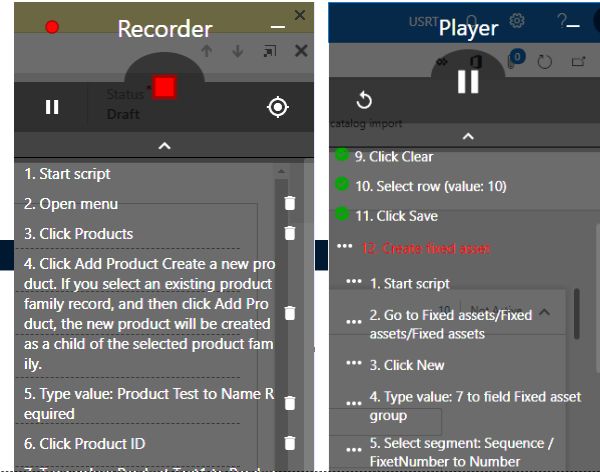
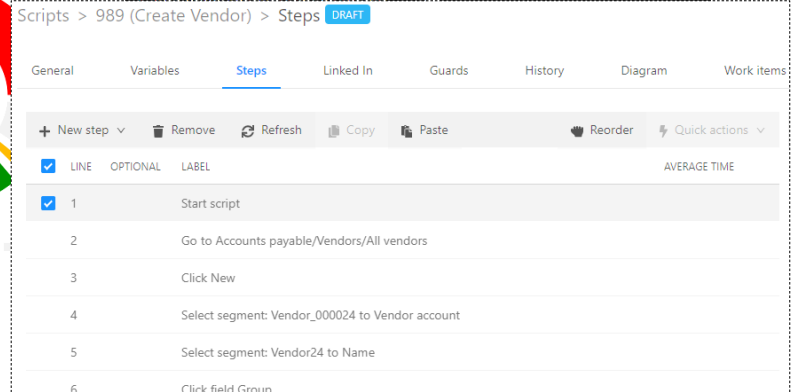
Use Executive Automats to automate testing on independent web-based applications as well as across multiple applications in 1 test to verify platform and data integrations

## 2. EASILY CREATE AND EXECUTE AUTOMATED TESTS

Super simple Record & Play tool with intuitive UI

Use number of features to transform recording into expected test scenario

Manage your scripts with Projects to divide into modules, teams or platforms

Use easy and intuitive tool interface to create complete test scripts and scenarios. Empower your testing teams with a codeless tool to manage testing process fast, easy and very effective.

# 3. USE OF VARIABLES, EXCEL DATA AND VALIDATIONS

Create variables and assign them with dynamic values

Use excel spreadsheets to input testing data sets

Pick variables directly from User Interface with “Inspect”

Create conditional steps to validate fields and variables

Use “Guards” and “Expressions” to create tests exactly as you need

Create 'Assign' Step

**Data Source**

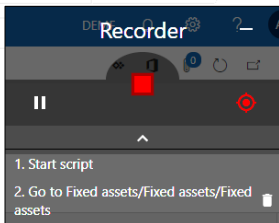
\* Label:

Delay:

\* Create after step:

=

Variable will be created



You may create different test scenarios to maximize your automated testing scope. Create conditional steps, jump between, validate fields and values, catch values and feed scripts with excel file data sets

Create 'Conditional' Step

\* Label:

Delay:  seconds

\* Create after step:

**IF**

\* Conditional type:  Data source

\* Condition:

**THEN**

\* Select action:

Enter message:

**ELSE**

\* Select action:

\* Select step:

\* Select sheet:

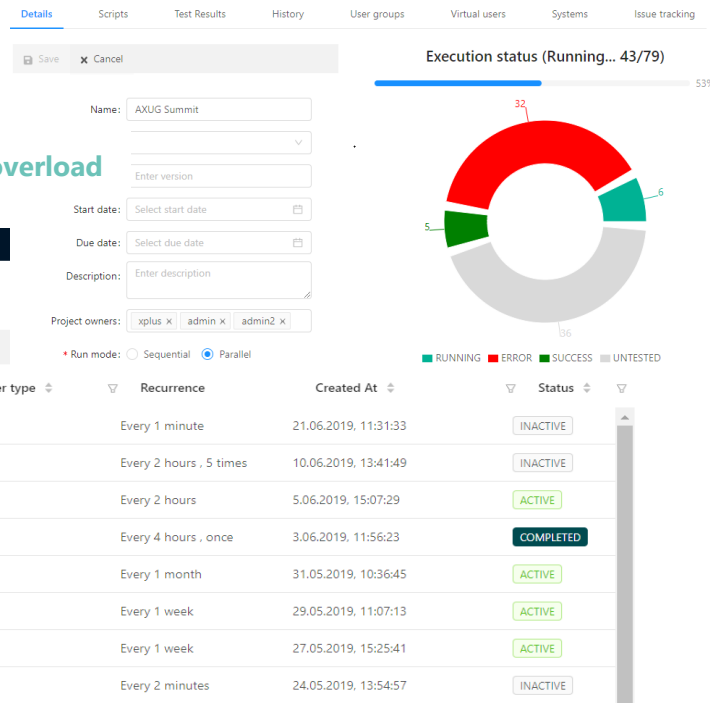
## 4. SCHEDULE TEST RUNS AND MONITOR RESULTS

Schedule execution of individual Scripts, Scripts queues and Projects

Monitor test results from Project, Script and individual steps perspective

Execute many scripts at the same time to speed up large testing Projects

Execute number of virtual users business processes to simulate a real system overload



Manage your test automation projects from one place to execute, plan test runs and monitor results. If there is a number of scripts to run in a limited time – no worries- you may execute in parallel sessions!

# 5. INTEGRATE WITH AZURE DEVOPS

Create issue tracking tool rule

Secure API integration

Automatically run Executive Automats tests from Azure DevOps process

Automatically create Azure DevOps Tasks for any automated tests issues

Set-up email notification for selected automated tests issues

## Errors and warnings of Create fixed assets

Step 16. Click Save

ERROR - Cannot create a record in Fixed assets (AssetTable). Fixed asset number: Fix-01, Fix-01. The re

Open work item: 14385

Close

Azure DevOps

Awx365

Overview

Boards

Work Items

Boards

Backlogs

Sprints

Queries

Plans

Team Capacity

Activity Feed

Estimate

Repos

Pipelines

Test Plans

xplussa / Awx365 / Boards /

Work Items

Recently updated + New

Filter by keyword

ID	Title	Assigned To	State	Area Path	Tags
14385	Script 971 Create fixed assets	Unassigned	Proposed	Awx365	
14372	Adjust image proportions in generated doc file	Mateusz Trzopek	Proposed	Awx365\BR	
14335	CRM Menu Items	Bartłomiej Kossak	Active	Awx365\BR	
14317	Save value from inspect into History tab	Unassigned	Proposed	Awx365\EA	
14298	Possibility to filter conditionals on the History tab	Unassigned	Proposed	Awx365\EA	
14295	Log in to CRM from login step	Unassigned	Proposed	Awx365\EA	
14293	[CRM] Recorder does not register selection step from the list in Dur...	Patrick Truszcz	Active	Awx365\EA	
14285	Build information in console	Unassigned	Proposed	Awx365\EA	
14282	[CRM] Clicking on snooze this card/dismiss this card	Patrick Truszcz	Proposed	Awx365\EA	
14184	[CRM] Tworzenie nowego rekordu z zakładki What's new	Bartłomiej Kossak	Active	Awx365	
14183	Global Variables	Bartosz Szpiech	Proposed	Awx365\BR	

API

Combine your manual testing plans with test automations with Azure DevOps. Automate test executions from Azure DevOps and automatically create DevOps tasks from test results to improve test plan continuity, management, coverage and integrity



# 7. MANAGE SETTINGS, PLATFORMS AND TEAMS

Assign roles to your Executive Automats users to limit their access to selected Features, Scripts and Projects

Set-up testing environments, projects, users and virtual users

Create “Number Sequences” to provide test scenarios with unique data sets



## Edit virtual user

Auth type: System Basic NTLM

Platform: Microsoft login

Name: Test

Login: awx.test1@XPLUSPLonmicrosoft.com

Show password field: ☒

Password: \*\*\*\*\*

Description: Enter description

Manage your Executive Automats' settings to set up EA user privileges, environments, and virtual users, as well as Project division and strategy.

EXECUTIVE AUTOMATS

Projects Scripts Scheduler History Settings

Settings > System Definitions

+ Add Remove Refresh Edit

Name	Address	Environment	Environment address
D365 demo usmf	https://xpl-dmo02.sandbox.operations.dynamics.com/?cmp=usmf&mi=DefaultDashboard	Test	D365 demo usmf
CRM MOB	https://xpl-dmo02.sandbox.operations.dynamics.com/?mi=action:WHSWorkExecute&cmp=US01	Production	CRM MOB
CRM_Prod	https://xpl-dmo02.sandbox.operations.dynamics.com	Development	DEV
test	https://xpl-dmo02.sandbox.operations.dynamics.com	Test	TEST
sharepoint test	https://xpl-dmo02.sandbox.operations.dynamics.com	Test	TESTSHP
D365 FO DEMF	https://xpl-dmo02.sandbox.operations.dynamics.com	Test	D365 FO DEMF

Create system definition

Environment: Test

Environment address: https://xpl-dmo02.sandbox.operations.dynamics.com/

Application name: Test

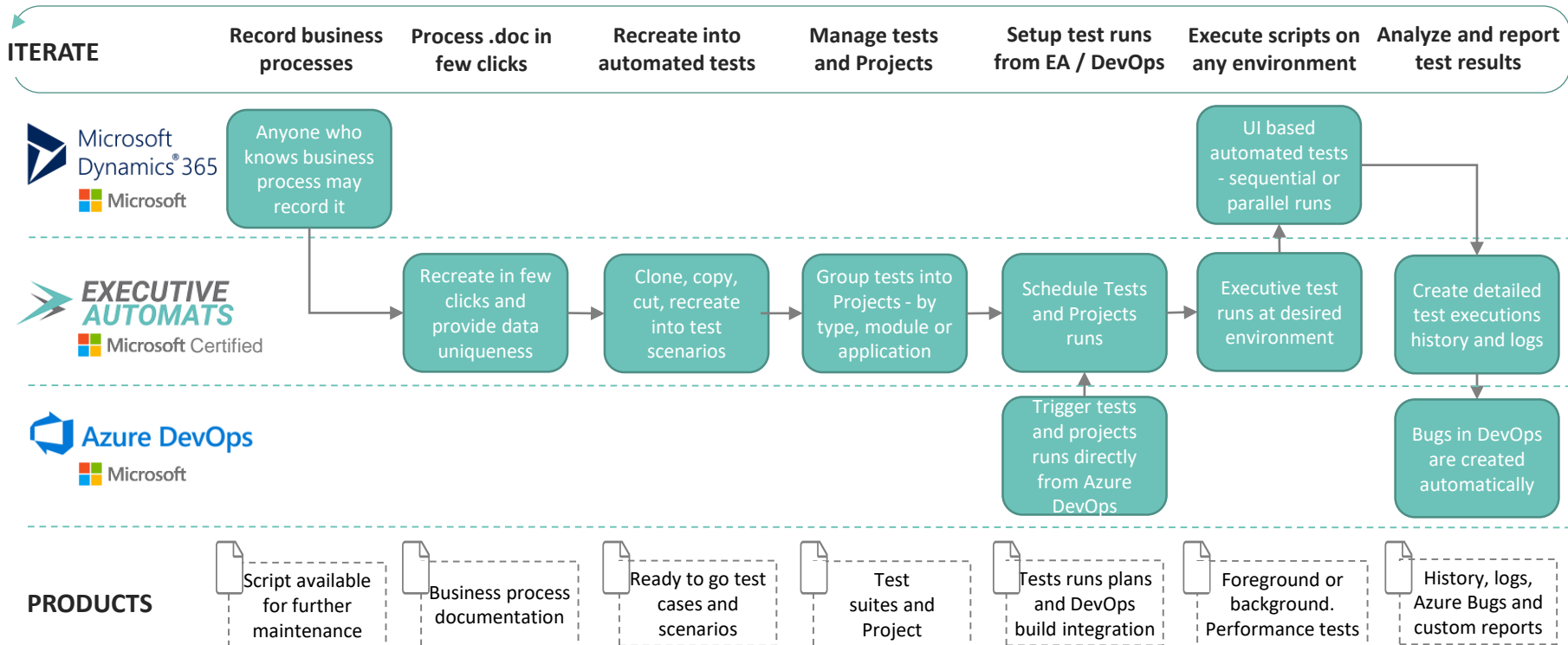
Environment type: Test

Description: Test



## 8. EXECUTIVE AUTOMATS TEST AUTOMATION FRAMEWORK

**Executive Automats** has been designed to allow testers and non-technical people create and run 100% codeless, complete automated testing suites.





## CONTACT US



**EXECUTIVE AUTOMATS**

[www.executiveautomats.com](http://www.executiveautomats.com)



**Bartosz Szpiech** – Product Manager

[Bartosz.Szpiech@xplus.pl](mailto:Bartosz.Szpiech@xplus.pl),

T: +48 882 174 241



**Jacob Davis** – International Sales

[Jacob.Davis@xplus.pl](mailto:Jacob.Davis@xplus.pl),

T: +48 881 930 129



**XPLUS**

[www.xplus.pl](http://www.xplus.pl)

**XPLUS S.A.**

Puławska 435A St.,

02-801 Warsaw, POLAND

T: +48 22 295 02 59



Microsoft  
Partner



Gold Enterprise Resource Planning  
Gold Application Development  
Gold Data Platform  
Gold Datacenter

2019/2020 **INNERCIRCLE**  
for Microsoft Business Applications

Microsoft Partner of the Year  
**2019 Winner**