

Tracking solution for intercontinental sea-freight flows

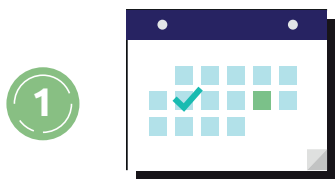


Safecube
SAFE ROUTES, SAFE GOODS, SAFE ENVIRONMENT

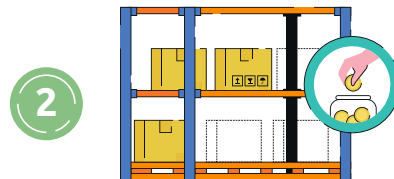
Container tracking creates value for exporters & importers

One international shipment can involve more than 200 operations and more than 25 actors... Consequently, shippers often complain about difficulties in getting real-time visibility of their containers shipments. This lack of traceability reduces supply chain agility and service level agreements to their final customers.

Data collected by container tracking sensors creates **value for exporters and importers** by:



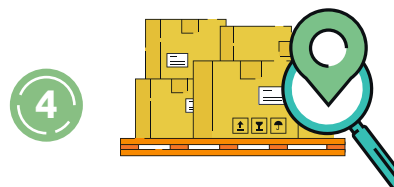
Reduced transportation lead time: advantage of several days by using real-time data to speed-up operations at the port of arrival



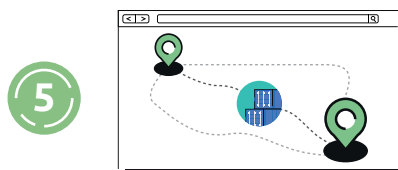
Reduced inventory: significant gains from decreased transportation (value depends on company inventory but can be counted in millions of euros)



Alerts in the event of delay: with a Supply Chain oriented-approach, better management of critical cases based on priority management of transported goods



Visibility for customers: can be considered a determining factor for a product or increase its value for customers



Routes optimization: based on the accumulation of detailed tracking data across a large number of shipments

All-inclusive tracking service for intercontinental sea-freight flows



IoT trackers

Positioned in containers by exporters.
Connected with Sigfox global network.
Working with ease in all parts of the world.



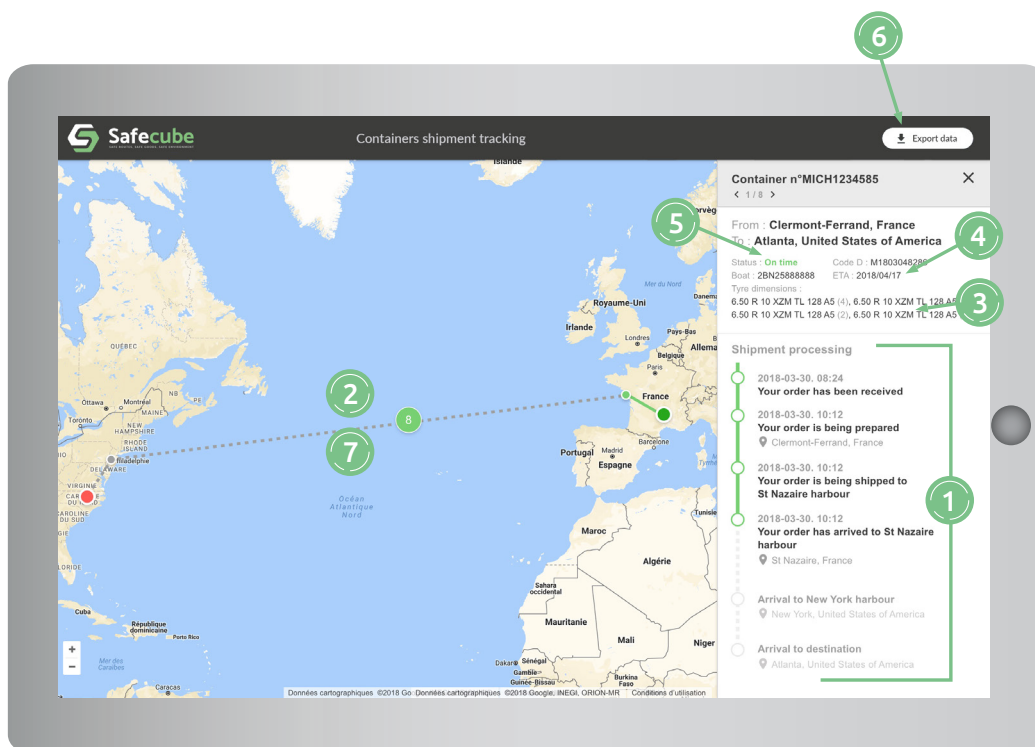
Analytics and Visibility web platform

Can be interfaced with clients
Information Systems.



Logistics services for trackers

Tracker delivery to departure warehouse
and reverse logistics from destination
warehouse.



1 Real-time events

- Unloading from vessel, departure from port, transshipment...
- Global view on all in-transit shipments with possibility to focus



2 End-to-end

- From container loading to container opening
- In-transit tracking in complex multi-modal transportation



3 Goods oriented

- Follow-up based on carried merchandise thanks to pairing between trackers and containers



4 Prediction

- Estimated Time of Arrival (ETA) prediction for better Supply Chain planning



5 Alerting

- Early / delays
- Pro-active shipments events alerts
- Missed ships
- Route deviation
- Sleeping containers



6 Route optimization

- Detailed analyses of lead-times per route and shipping lines



7 Conditions monitoring

- Temperature, pressure, humidity...



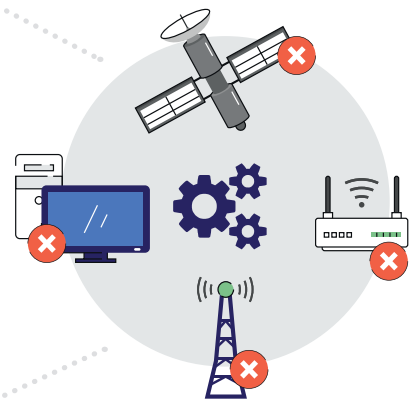
Enjoy the benefits of IoT tracking

With the Sigfox «0G» network and its international coverage, containers can be tracked under highly competitive conditions for the shipper:



Independence from shipping lines and transporters: the shipper can choose the flows they want to track within the geographic scope of the network coverage

Plug-and-play solution: no infrastructure to install, sensors with very long runtimes (several years)



Competitive price per shipment, much lower than traditional solutions (the price covers the tracker, connectivity fees, the platform, trackers logistics and potential customs fees)



Contact us: contact@safecube.com