

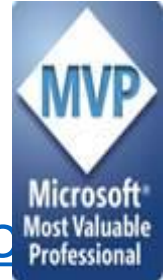
Extranet User Manager

Introductions

Peter Carson



- President, Envision IT
- Office Apps and Services MVP
- peter.carson@extranetusermanager.com
- <http://blog.petercarson.ca>
- www.extranetusermanager.com
- Twitter @carsonpeter
- President Toronto SharePoint User Group



Logan Guest

Sales

- e: logan.guest@extranetusermanager.com
- p: (647) 265-8256



Leadership Team

Peter Carson
CEO & Founder



Denesh Sohan
Director Development



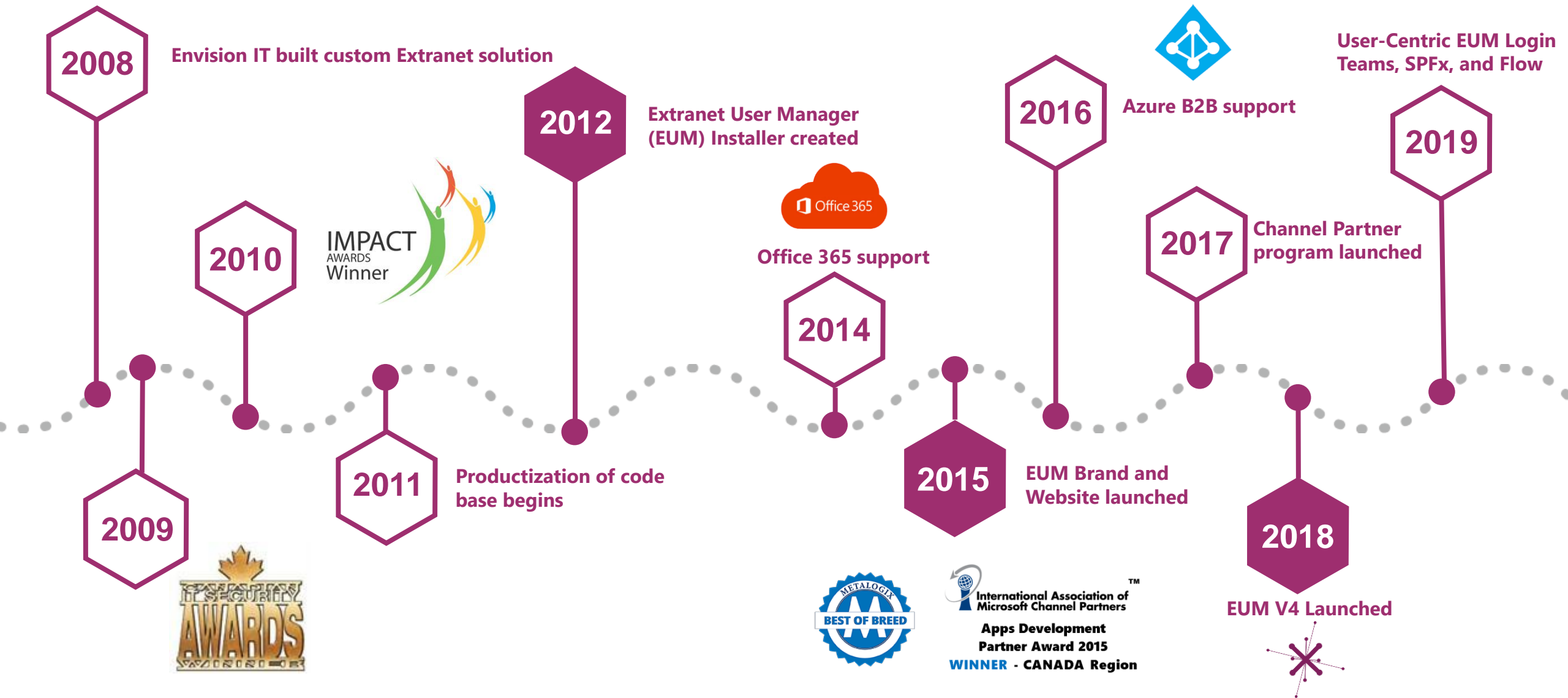
Logan Guest
Sales Associate



Deborah Wynne
Director Finance/Admin



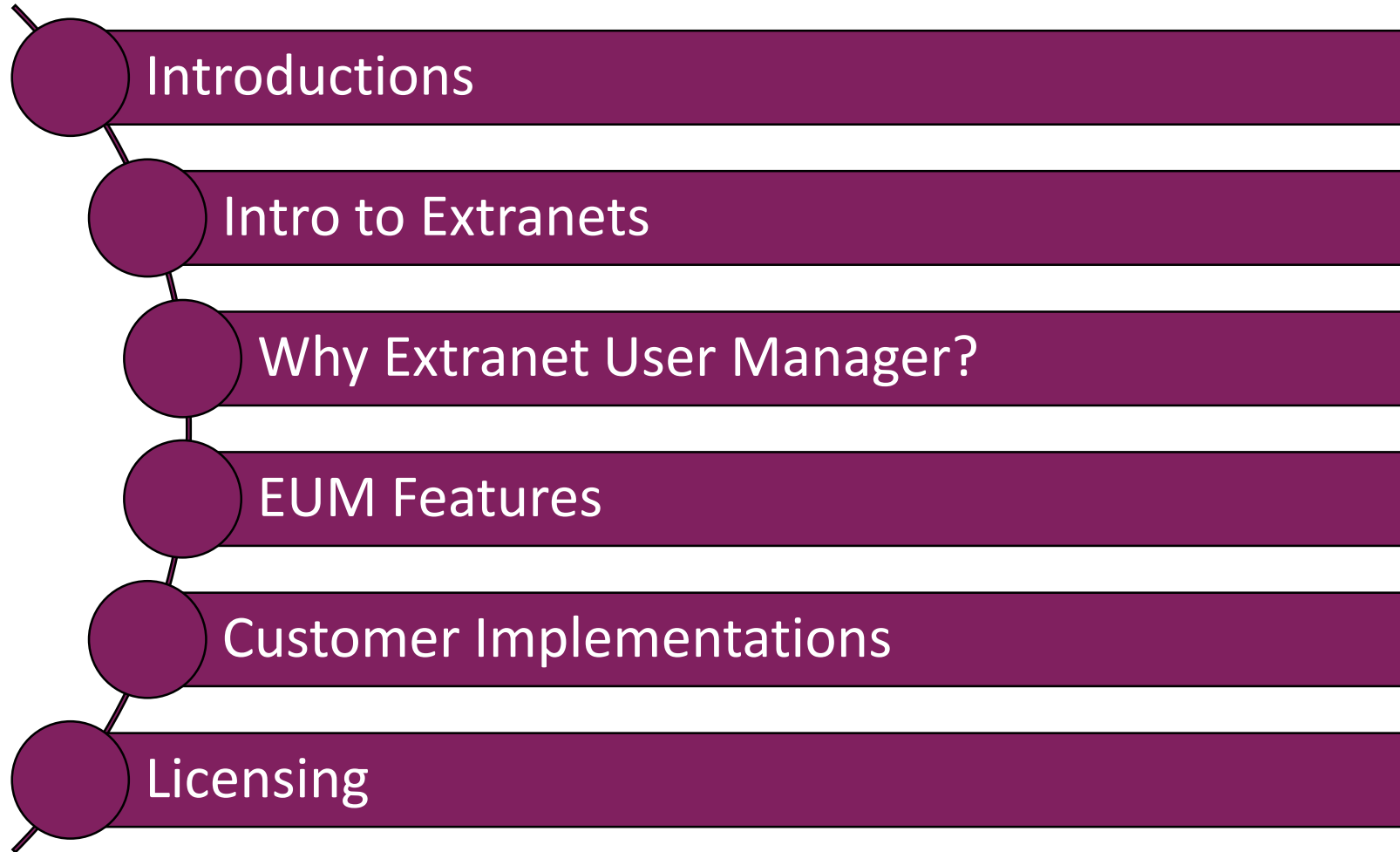
Amanda Da Costa
Marketing Associate



Customers around the Globe



Agenda

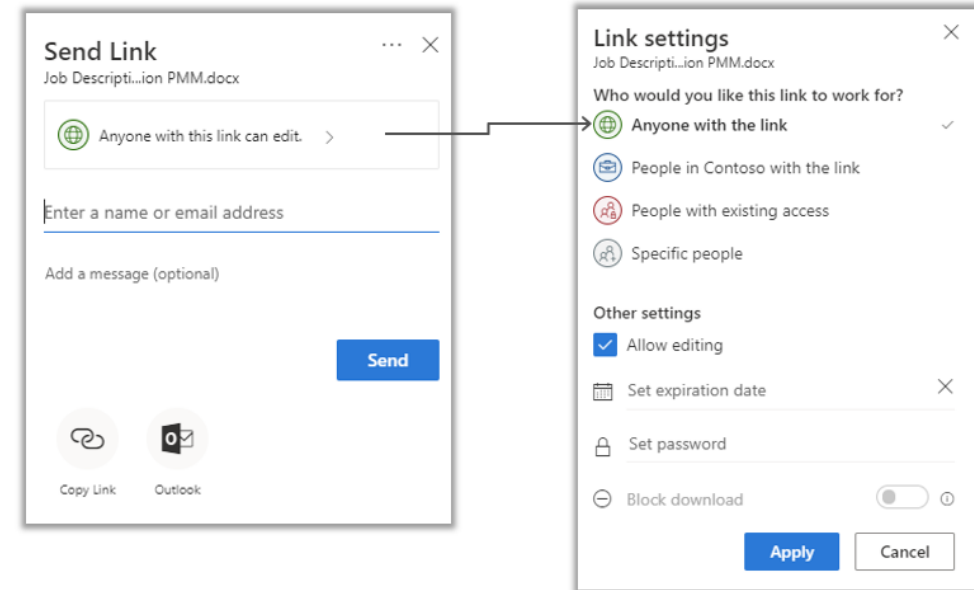


Considerations

- Who is coming into the Extranet?
- Does everyone see the same information?
- Is there a member database to interface with?
- Is it invitation only, or can people self-register
- Who approves new registrations?
- Is it just the Extranet they will be accessing, or are there other systems?

Unstructured Extranets with Office 365 External Sharing

- **External Sharing in Office 365 strongly supports ad-hoc collaboration**
- **Sharing documents with a few to a few dozen external people**
- **Secure Link sharing to sites, libraries, and documents**
 - Anyone with the link (Anonymous)
 - People in your Organization
 - People with existing access
 - Specific people



Making the News!

Exclusive interview with Mark Kashman and Stephen Rice of the Microsoft SharePoint Team

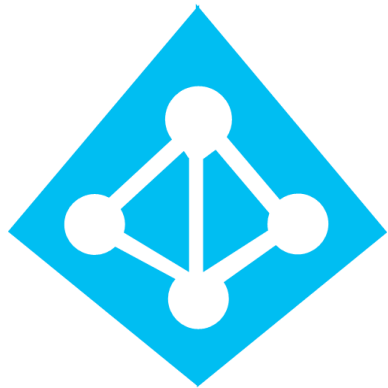


eum.co/resources/articles/external-sharing-interview-with-the-sharepoint-product-team

Structured Extranets

- **Typically hundreds to thousands of external users**
- **Represent many different groups of external users**
 - Projects
 - Committees
 - Customers
 - Vendors
 - Partners
- **May be many different business owners**
 - Owners can be internal or external

Azure AD B2B and Office 365



- Azure Active Directory Business to Business
- Allows external users to access Office 365 and any other system exposed through AAD
- Completely free for external users in Office 365
- 1:5 licensing ratio only applies to Azure AD Basic and Premium features
- Invite as many external users as you'd like

Azure AD B2B Onboarding Experiences

Existing Office 365

- Logs in with their Azure AD credentials
- Seamless experience
- Single sign-on if already signed into Office 365
- Also works for Microsoft accounts

No Azure AD Account

- One time passcode
- Emailed at sign-in
- Valid for 10 minutes
- Low friction, no new account to setup or password to remember
- Validates at each sign in that they still own the email address

Google User

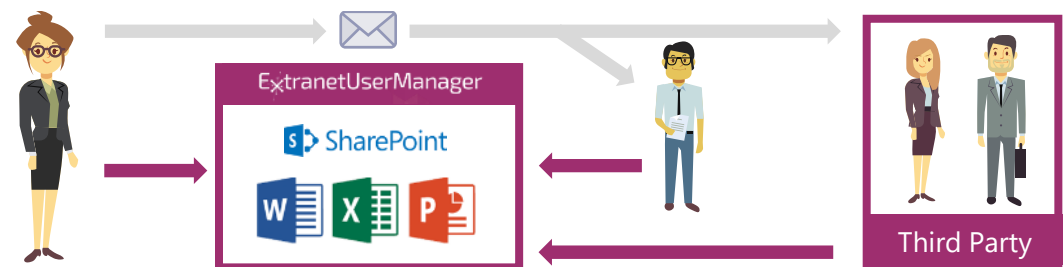
- Federation with Google accounts now also supported
- Same seamless login experience as Office 365

Why Extranet User Manager?



Office 365 and Azure AD B2B Native

- **External Sharing is not scalable**
 - Individual users need permissions management to invite
 - Permissions become a mess, governance goes out the window
- **Azure B2B is not end user friendly**
 - Azure portal is overwhelming
 - All or nothing delegation
- **No self-registration**
- **No integration to other line of business systems**
- **No integration to on premises AD**
- **EUM provides the self-registration, profile management, and delegation**
- **As users and groups are created by the business owners, they are setup in Azure AD by EUM**
- **EUM sends the invitations**
- **Azure AD manages the login process**
- **EUM manages the group membership leveraged for permissions**



When to use....

External Sharing

- **Sharing with a few people**
- **Co-authoring on individual documents**
- **You are the sole administrator of permissions**
- **Eliminate the use of other shadow IT within the organization**

EUM with Azure AD B2B

- **Sharing with many people with granular permission sets**
- **Self service functionalities like Self Registration, My Profile, etc.**
- **Delegation to the business owner to administer and manage sites they own as well as tier 1 service desks**
- **Link into automated site provisioning process**
- **Integration to other LOB systems**

Three Structured External Sharing Scenarios

Invitation Only

- Business owner knows who to invite
- Direct one of invitations
- Bulk import of external users

Private Registration

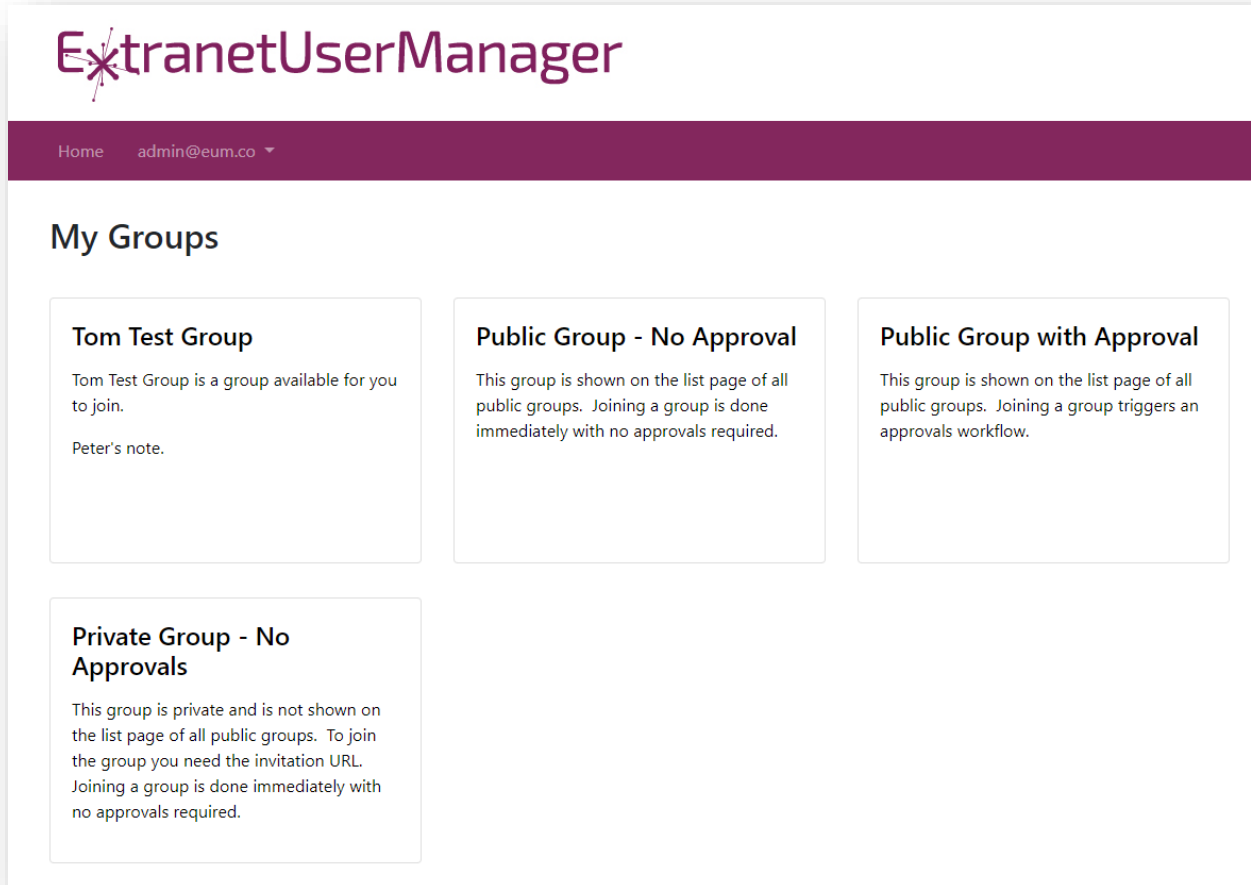
- Business owner knows someone who knows who to invite
- Private registration link that is not easily guessed
- Can be forwarded any number of times
- May or may not want approvals on registration
- May auto-approve based on email domain

Public Registration

- Anyone should be able to discover and register
- Typically linked from a public website page
- May or may not want approvals on registration
- May auto-approve based on email domain

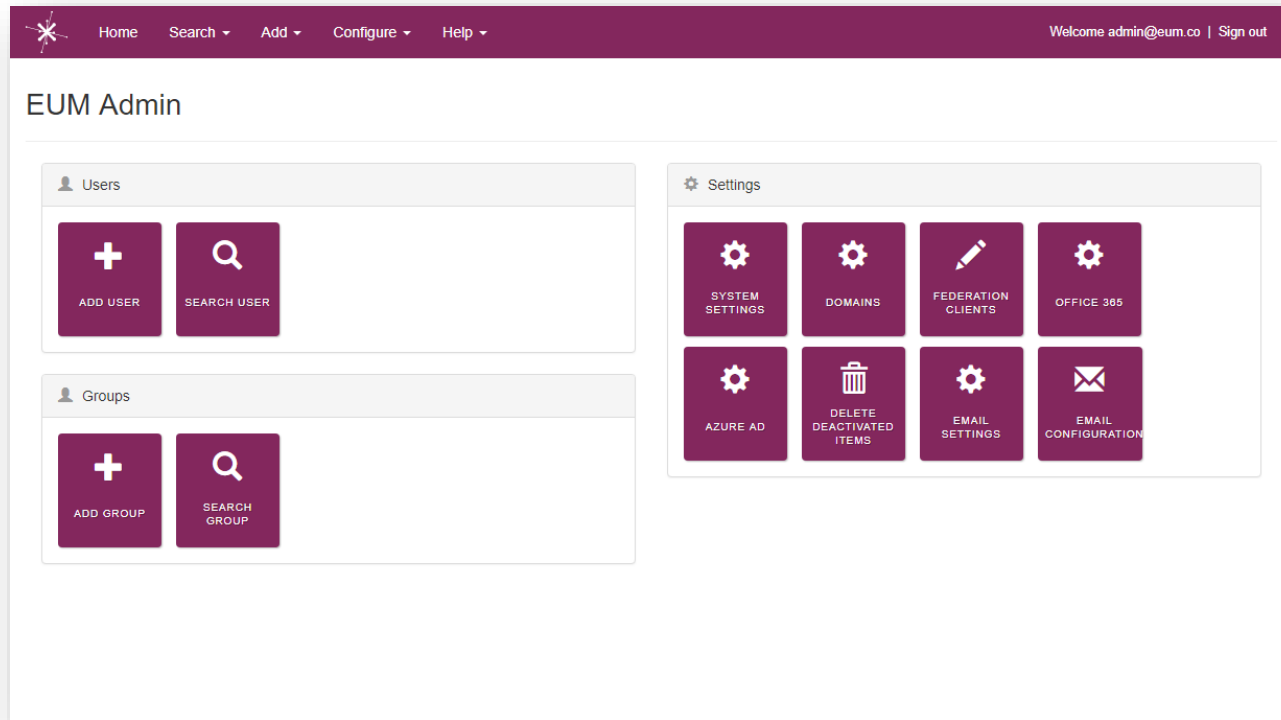
Extranet User Manager Features

End User Components



- **Register/Sign In**
- **Manage your profile**
- **Manage your groups**
- **Request access to new groups**

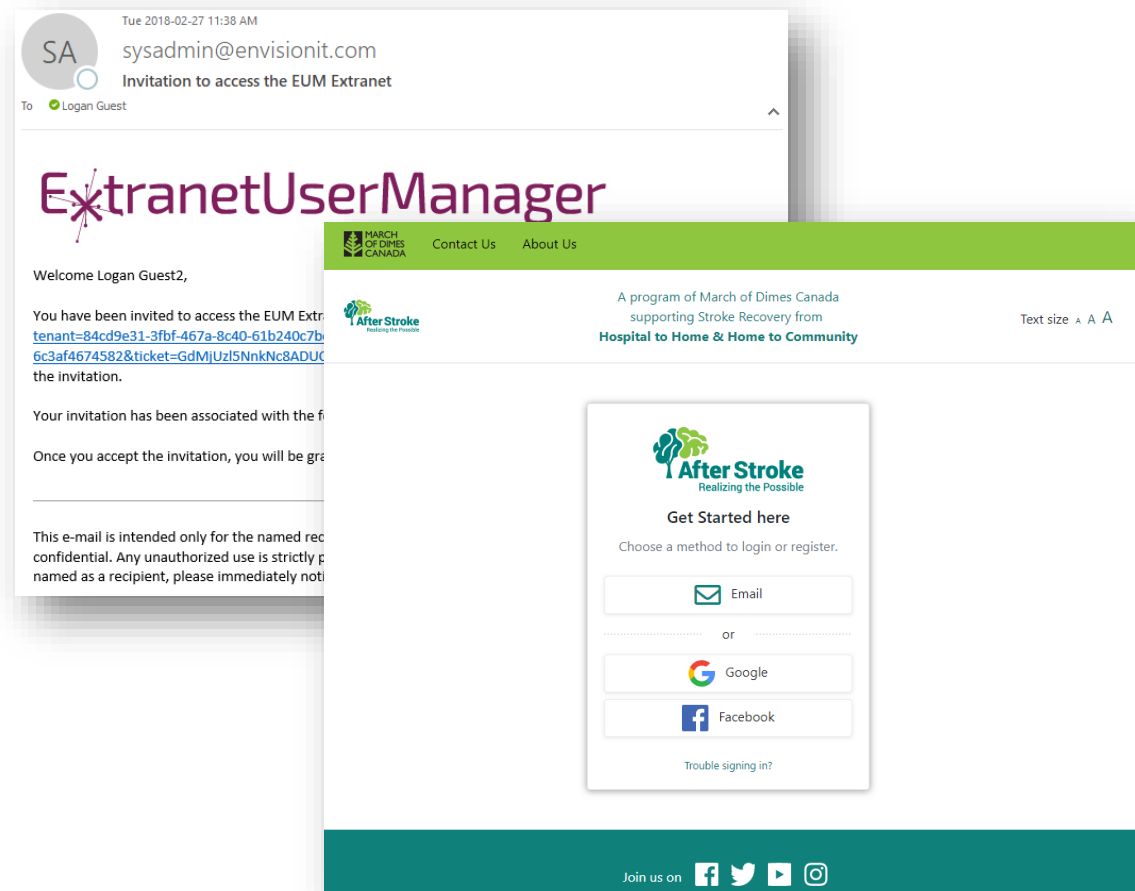
Admin Components



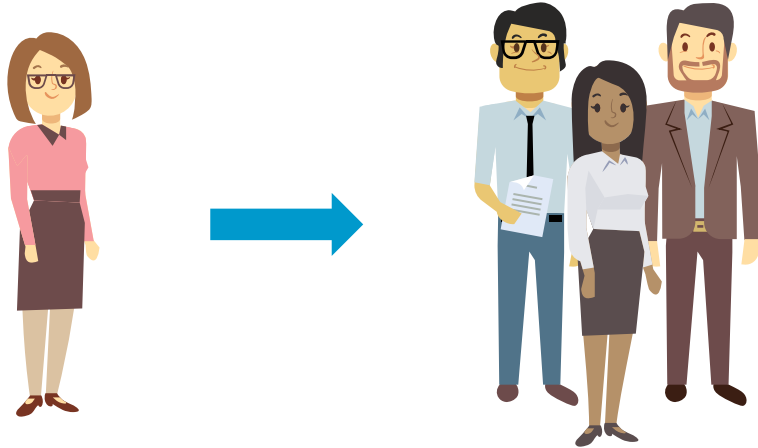
- **Delegated access for the business owners and external users**
- **Search, add, edit, and import users and groups**
- **Used by administrators to configure the system**
 - General settings
 - Federation Clients
 - Email templates
 - Office 365
 - Azure AD B2B

Branded Experience

- Maintain your corporate brand throughout the entire user experience
 - Registration
 - All end-user pages
 - Emails



Delegated User Management



- Management of the extranet users is delegated to the business
- IT does not need to manage accounts
- Can also be delegated securely to the external organizations themselves

Self-Registration

The screenshot shows a web form for self-registration. At the top, there is a green header with the March of Dimes Canada logo and navigation links for 'Contact Us' and 'About Us'. Below the header, the program name 'After Stroke' is displayed, along with the text 'A program of March of Dimes Canada supporting Stroke Recovery from Hospital to Home & Home to Community'. A progress bar indicates four steps: 1. Role, 2. Personal Info (current step), 3. Interests, and 4. Summary. The form fields include: Email (lguest1@envisionit.com), First Name (John), Last Name (Smith), Password (password), Password Verification (retype your password), Country (Canada), and Postal Code (A1A 1A1). A 'Text size' control is visible in the top right corner.

- Fully customizable registration experience
- Self service profile page
- Fields can be added or removed
- Can be integrated into back-end systems
- Customizable approval workflow
- Simple edits such as adding or removing fields done just through HTML editing of form

Adaptive Design

- Leverages the Bootstrap framework
- All end-user pages adapt to smartphone, tablet, or desktop experiences



ExtranetUserManager

ExtranetUserManager

Welcome

Register your account. All fields are required.

test@eum.co

First name

Last name

Country

Organization

Password

Confirm Password

Your password must begin with a letter or number

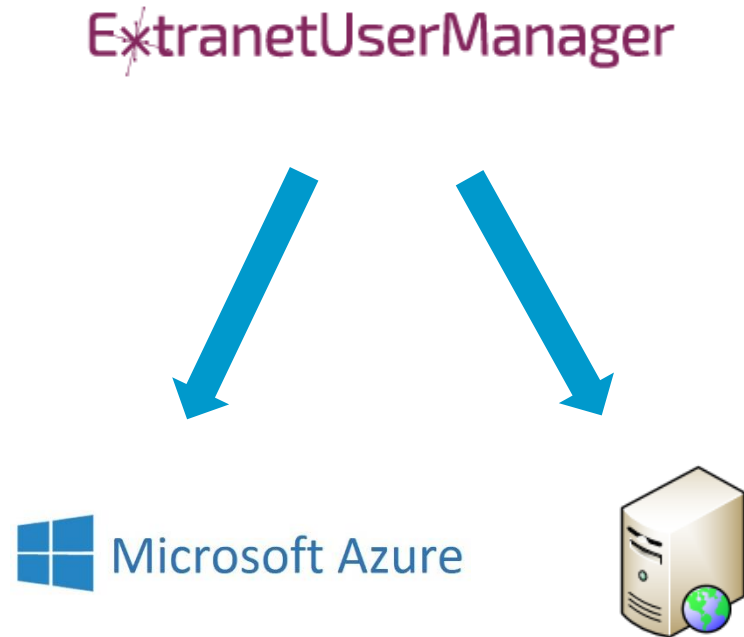
☐ I would like to receive the eNewsletter

☐ I accept the [terms & conditions](#)

Register

< Start over

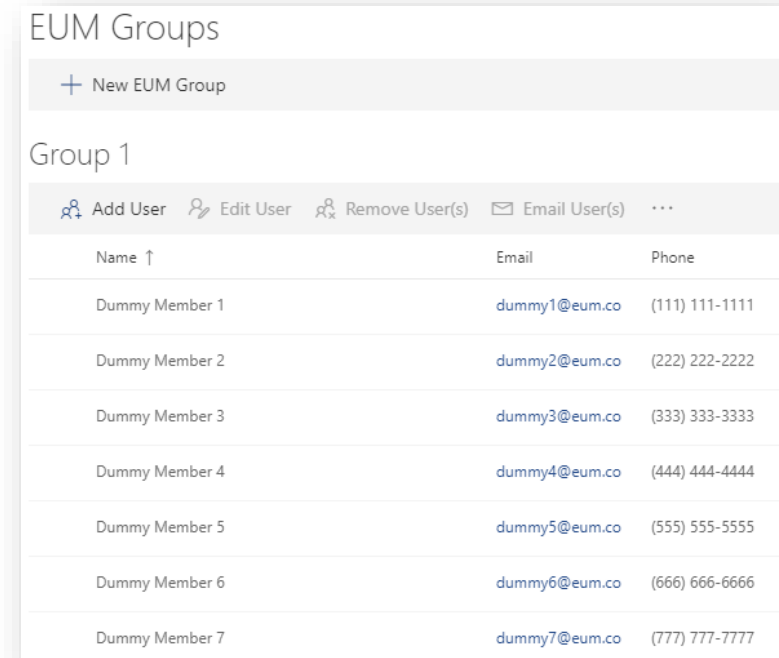
Azure Hosted or On Premise



- Can be installed on an on premise server
 - SharePoint Server
 - IIS Server
- Host in your Azure Tenant
 - App Service
- Host in our Azure Tenant
 - Secure multi-tenant hosting
 - Managed by Envision IT
 - 7x24 monitoring and remediation

Groups and Users SPFx Webpart

- **Add Groups and Users directly from the SharePoint Online site**
- **Permissions are automatically wired up in the background by EUM Flow Connector**
- **Full Administrative capabilities**
 - Add, Edit, Remove groups
 - Add, Edit, Remove users
 - Copy and share private link for registration

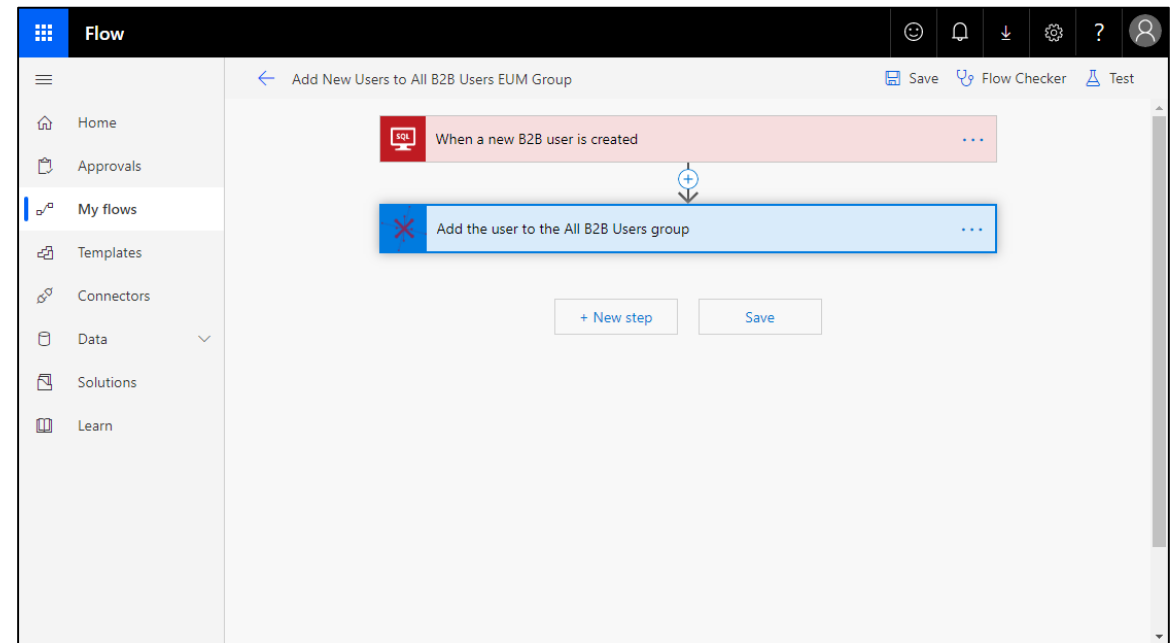


The screenshot displays the 'EUM Groups' webpart interface. At the top, there is a '+ New EUM Group' button. Below this, the section is titled 'Group 1'. A toolbar contains icons and labels for 'Add User', 'Edit User', 'Remove User(s)', 'Email User(s)', and a menu icon. The main area is a table with three columns: 'Name ↑', 'Email', and 'Phone'. It lists seven dummy members with sequential IDs and phone numbers.

Name ↑	Email	Phone
Dummy Member 1	dummy1@eum.co	(111) 111-1111
Dummy Member 2	dummy2@eum.co	(222) 222-2222
Dummy Member 3	dummy3@eum.co	(333) 333-3333
Dummy Member 4	dummy4@eum.co	(444) 444-4444
Dummy Member 5	dummy5@eum.co	(555) 555-5555
Dummy Member 6	dummy6@eum.co	(666) 666-6666
Dummy Member 7	dummy7@eum.co	(777) 777-7777

Microsoft Flow Integration

- **Actions in EUM can trigger Flow workflows**
 - Registration of a new user, request to join a group, etc.
- **All user and group actions are available in Flow**
 - Add or edit users or groups
 - Add or remove users from groups



Customer Implementations

Customer Case Study:

Associated Engineering

The Problem:

Associated Engineering work with multiple external parties on projects of various sizes. They require efficient collaboration and communication is key.

SharePoint on premises pilot quickly became production.

Lack of high-availability and disaster recovery became a significant risk.



Customer Case Study:

Associated Engineering

The Results

- High-Availability & Disaster Recovery in Office 365
- External Partner Access through Azure AD B2B
- Delegated User Management with Extranet User Manager
- Project Site Creation Automation



Licensing

Extranet User Manager Licensing - Monthly

Version	# of Users	Cost	Onboarding (1 Time Fee)
Light Edition	250	\$250 /month	\$800
Standard Edition	250 – 5000	\$400 /month	\$1,600
Enterprise Edition	5000 +	\$650 /month	\$1,600

US Dollars

Full feature set and pricing details available at <https://www.extranetusermanager.com/Pricing>

Thank you

Questions?

